

42

**U.S. PUBLIC LAND CORNER
MAINTENANCE**

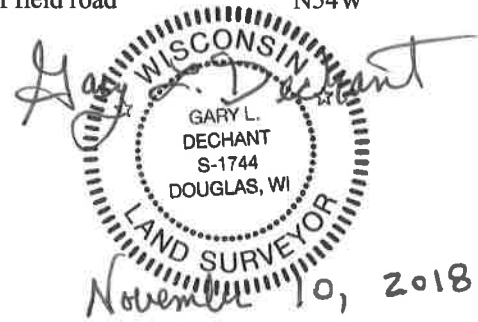
Corner ID : S1/4 Sec.12, T17N-R1W

21701120020

<u>DATE</u>	<u>CREW</u>	<u>MONUMENT TYPE</u>
November 6, 2018	Zachariah P. Dechant Gary L. Dechant	Existing Harrison intact, down 10", 4' west of fence. Set sign 1' south.

References:

	<u>Bearing</u>	<u>Distance</u>
1) Set 3/4"x24" round iron bar, down 10" in field	N40E	30.62'
2) Set 3/4"x24" round iron bar, down 10" in field	S37E	29.25'
3) Set 3/4"x24" round iron bar, down 10" east edge of field road	S36W	30.20'
4) Set 3/4"x24" round iron bar, down 10" east edge of field road	N54W	23.41'



I, Harley A. Sime, do hereby certify that on the 5th day of July 19 79, I found (evidence) (no evidence) of the South 1/4 corner of Section 12, T 17 N, R 1 W Fourth Principal Meridian, and I re-established said corner according to the Wisconsin Statutes as shown and described hereon.

Dated this 30th day of Dec. 19 80.

Approved: HARLEY A. SIME
MONROE CO. SURVEYOR
Title

History of corner establishment since Original Government Survey

No known history since the original government survey.

Description of corner evidence found:

Set this corner on line and equidistant between the SW corner and SE corner of Section 12.

See Reverse Side For Maintenance

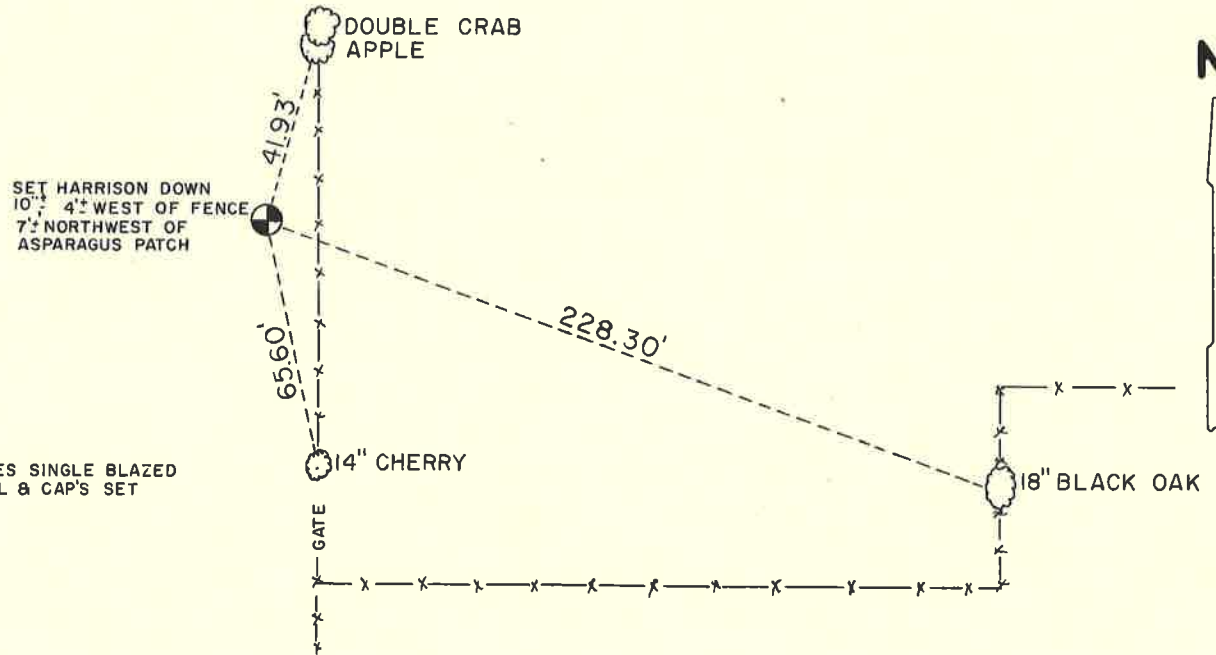
COUNTY SURVEYOR FORM NO. 1

Description of corner and witness monuments, references and accessories used to perpetuate the original or re-established location of this corner:

Witnesses to corner location:

Dechant

Webb



NOTE: ALL TREES SINGLE BLAZED WITH NAIL & CAP'S SET

SURVEY CONTROL ORDER

Horizontal	_____
Vertical	_____

WISCONSIN COORDINATE SYSTEM

Corner	East (X)	North (Y)	Elevation (Z)	Zone
Control Sta. Name				

SIGN PLACED 7-24-93

_____ or Town Tomah
 County of Monroe