

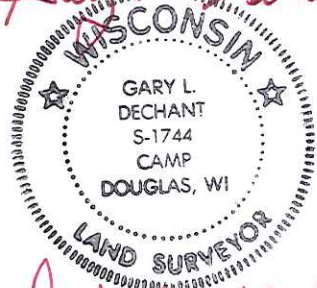
U.S. LAND CORNER MAINTENANCE

Corner ID : E1/4 Sec. 19, T17N-R1W
21701192000

DATE	CREW	MONUMENT TYPE -----
September 13, 2013	Zachariah P. Dechant Gary L. Dechant	Found Harrison, 15' south of centerline of road

References:	Bearing	Distance
1) Set 3/4"x24" hexagon iron bar, down 6", 11' north of r/w fence	N24E	48.70'
2) Set 3/4"x24" hexagon iron bar, down 6", 4' from toe of slope	S88E	55.46'
3) Set 3/4"x24" hexagon iron bar, down 8", 3' south of r/w fence	S24W	18.11'
4) Set 3/4"x24" hexagon iron bar, down 6", 3' south wood post of r/w fence	N88W	21.42'
5) Existing 1" iron bar in centerline of road on forty line	North	14.80'

Harrison and reference markers 1-4 are on straight lines.

Gary L. Dechant

September 13, 2013

21701192000

I, Harley A. Sime, do hereby certify that on the 13th day of March 1981, I found ~~(no evidence)~~ (no evidence) of the East 1/4 corner of Section 19, T 17 N, R 1 W Fourth Principal Meridian, and I re-established said corner according to the Wisconsin Statutes as shown and described hereon.

Dated this 16th day of March 1981.

**Approved: HARLEY A. SIME
MONROE CO. SURVEYOR**

History of corner establishment since Original Government Survey

Kenyon(?) was at this corner in April of 1890.
Fred Holden set an Iron Pipe at this corner in June of 1910.
O. R. Dahl was at this corner in November of 1868.

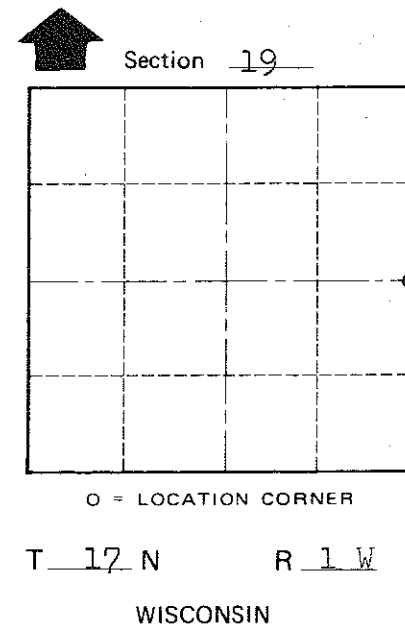
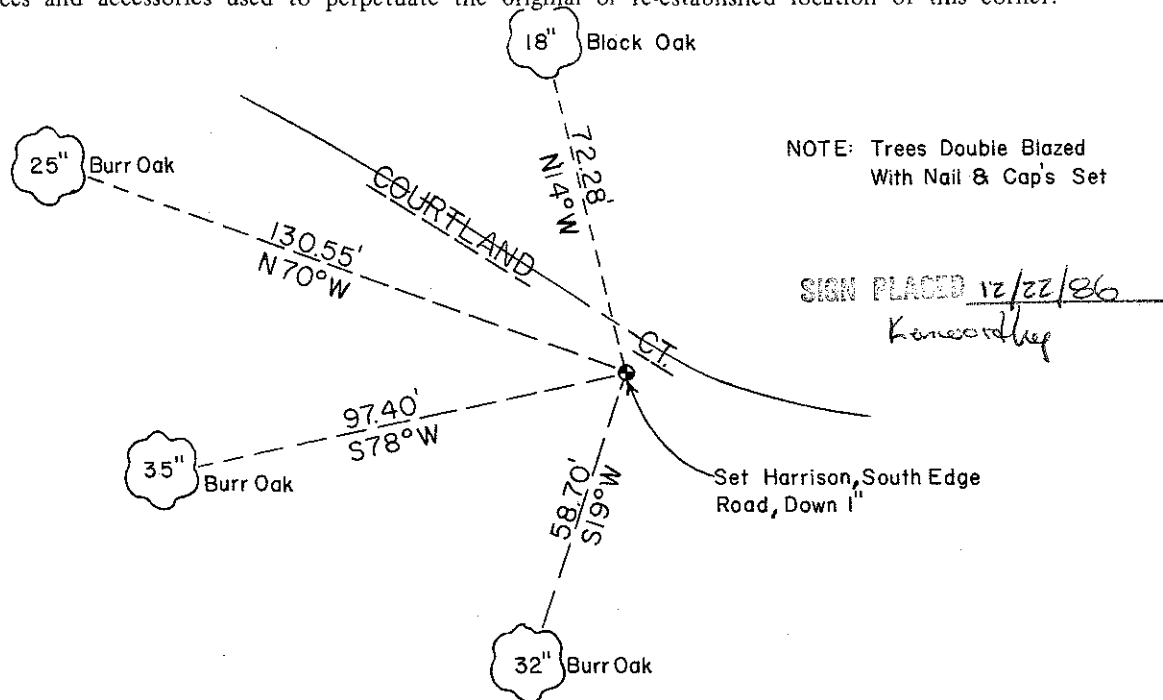
Description of corner evidence found:

Set the corner equidistant and on line with the section corners.
Did not find Holden's pipe. The old line fence going to the West is slightly North of the Harrison.

Description of corner and witness monuments, references and accessories used to perpetuate the original or re-established location of this corner:

Witnesses to corner location:

Dechant
Meyer



COUNTY SURVEYOR FORM NO. 1

SURVEY CONTROL ORDER

Horizontal	_____
Vertical	_____

WISCONSIN COORDINATE SYSTEM

Corner	East (X)	North (Y)	Elevation (Z)	Zone
Control Sta. Name				

~~City, Village~~ Town Tomah
County of Monroe
Wisconsin