

92


**U.S. PUBLIC LAND CORNER
MAINTENANCE**

**Corner ID : S1/4 Sec. 19, T17N-R1W
21701190020**

DATE	CREW	MONUMENT TYPE -----
September 15, 2018	Zachariah P. Dechant Gary L. Dechant	Found Harrison, top broke off, flush with CTH "M", 63' south of driveway 17030. Found 3/4" round iron bar (1975 tie) 27.2' west.

<u>References:</u>	<u>Bearing</u>	<u>Distance</u>
1) Set 3/4" x 24" round iron bar, down 3" in lawn, 4' south of edge gravel drive	N68E	44.50'
2) Set 3/4"x 24" round iron bar, down 3" in lawn	S55E	45.06'
3) Set 3/4"x 24" round iron bar, down 10" in field	S68W	41.87'
4) Set 3/4"x 24" round iron bar, down 10" in field	.N55W	40.22'

Harrison and reference markers set on straight lines.

Gary L. Dechant

September 15, 2018

I, Harley A. Sime, do hereby certify that on the 21 day of November 19 75, I found (evidence) ~~no evidence~~ of the S 1/4 corner of Section 19, T 17 N, R 1 W, Fourth Principal Meridian, and I re-established said corner according to the Wisconsin Statutes as shown and described hereon.

Dated this 16th day of March 19 77.

History of original corner establishment:

Schroeder was probably at this corner in April of 1890.

Description of corner evidence found:

Set at record distance from SE corner of Section, and on line with existing fences. This fits South line of Section Perfectly as far distance is concerned. There is however a slight kink in the line.

County Surveyor

**Approved: HARLEY A. SIME
MONROE CO. SURVEYOR**

**See Reverse Side
For Maintenance**

Description of corner and witness monuments, references and accessories used to perpetuate the original or re-established location of this corner:

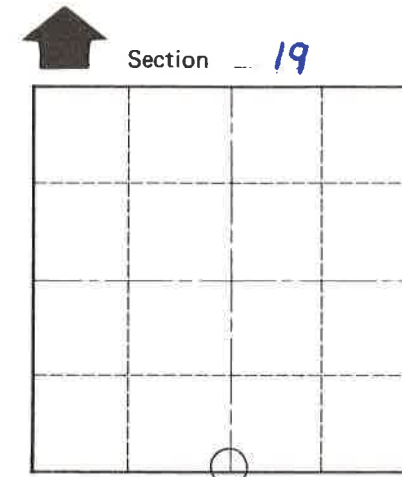
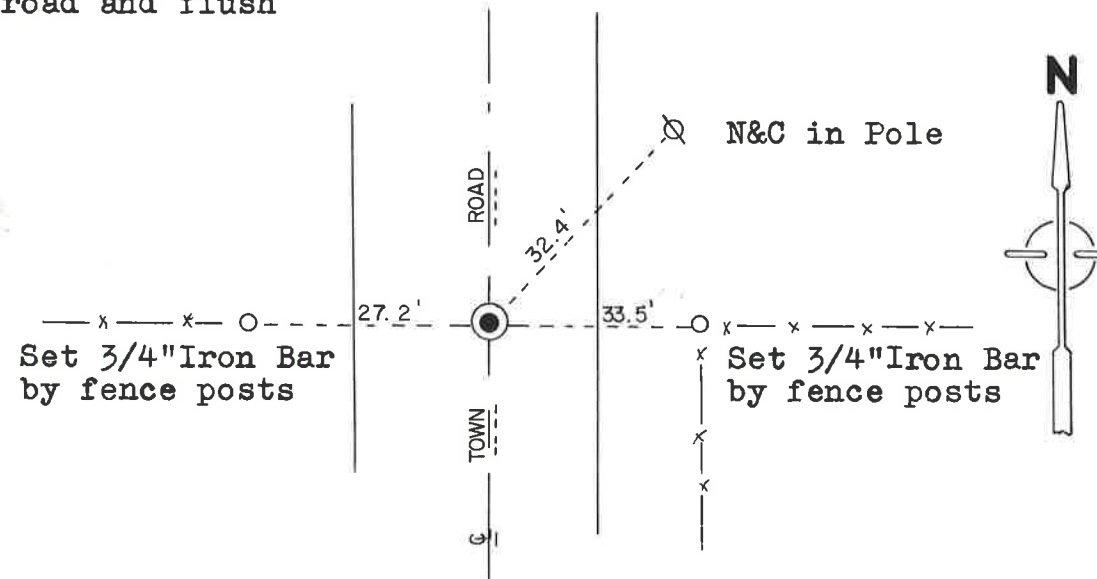
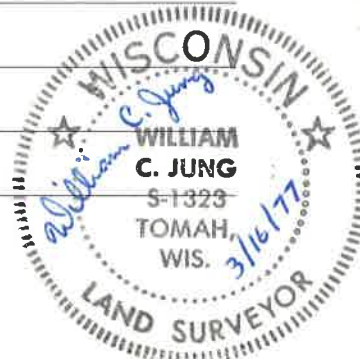
Set Harrison Monument Centerline of road and flush with same.

Witnesses to corner location:

William C. Jung

Douglas Malliet

August Lueck



O = LOCATION CORNER
T 17 N R 1 W
WISCONSIN

SURVEY CONTROL ORDER

Horizontal	_____
Vertical	_____

WISCONSIN COORDINATE SYSTEM

Corner	East (X)	North (Y)	Elevation (Z)	Zone
Control Sta. Name				

~~City/Town~~ or Town Tomah

County of Monroe

COUNTY SURVEYOR FORM NO. 1