

21701182000

U.S. PUBLIC LAND SURVEY MONUMENT RECORD

INSTRUCTIONS: THIS RECORD SHALL SHOW THE LOCATION OF THE CORNER AND SHALL INCLUDE ALL OF THE FOLLOWING NINE ELEMENTS (A THROUGH I)

(A) IDENTIFY THE CORNER BY REFERENCE TO THE U.S. PUBLIC LAND SURVEY SYSTEM

■ = CORNER MONUMENT FOUND

WITNESSES TO CORNER LOCATION:

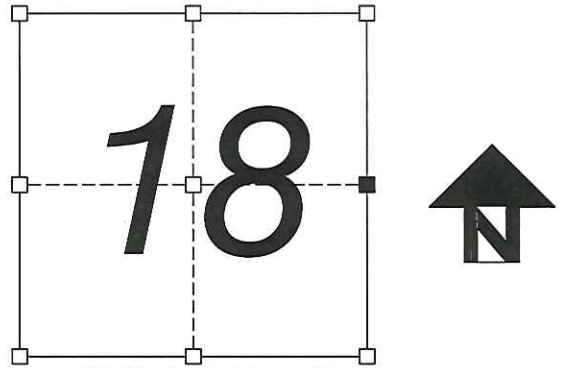
NOAH E. ANLIKER

MONROE COUNTY COORDINATES, NAD83(2011)

NORTHING: 381809.219

EASTING: 699174.268

(B) DESCRIBE ANY RECORD EVIDENCE, MONUMENT EVIDENCE, OCCUPATIONAL EVIDENCE, TESTIMONIAL EVIDENCE, OR ANY OTHER MATERIAL EVIDENCE YOU CONSIDERED, AND WHETHER THE MONUMENT WAS FOUND OR PLACED.



SECTION 18, T.17N., R.1W.

A HARRISON MONUMENT WAS FOUND AT THIS CORNER AS SHOWN ON A U.S. PUBLIC LAND SURVEY MONUMENT RECORD DATED DECEMBER 30, 1980 BY HARLEY A. SIME. NO WITNESS MONUMENTS REMAINED. FOUR WITNESS MONUMENTS WERE SET AND REFERENCED AS ILLUSTRATED BELOW.

(C) IN THE PLAN VIEW DRAWING BELOW, PROVIDE REFERENCE TIES TO AT LEAST 4 WITNESS MONUMENTS, OR, IF THE LOCATION IS WITHIN A MUNICIPALITY, TO AT LEAST 2 WITNESS MONUMENTS, (WITNESS MONUMENTS SHALL BE MADE OF CONCRETE, NATURAL STONE, IRON OR OTHER EQUALLY DURABLE MATERIAL). DESCRIBE WITNESS MONUMENTS.

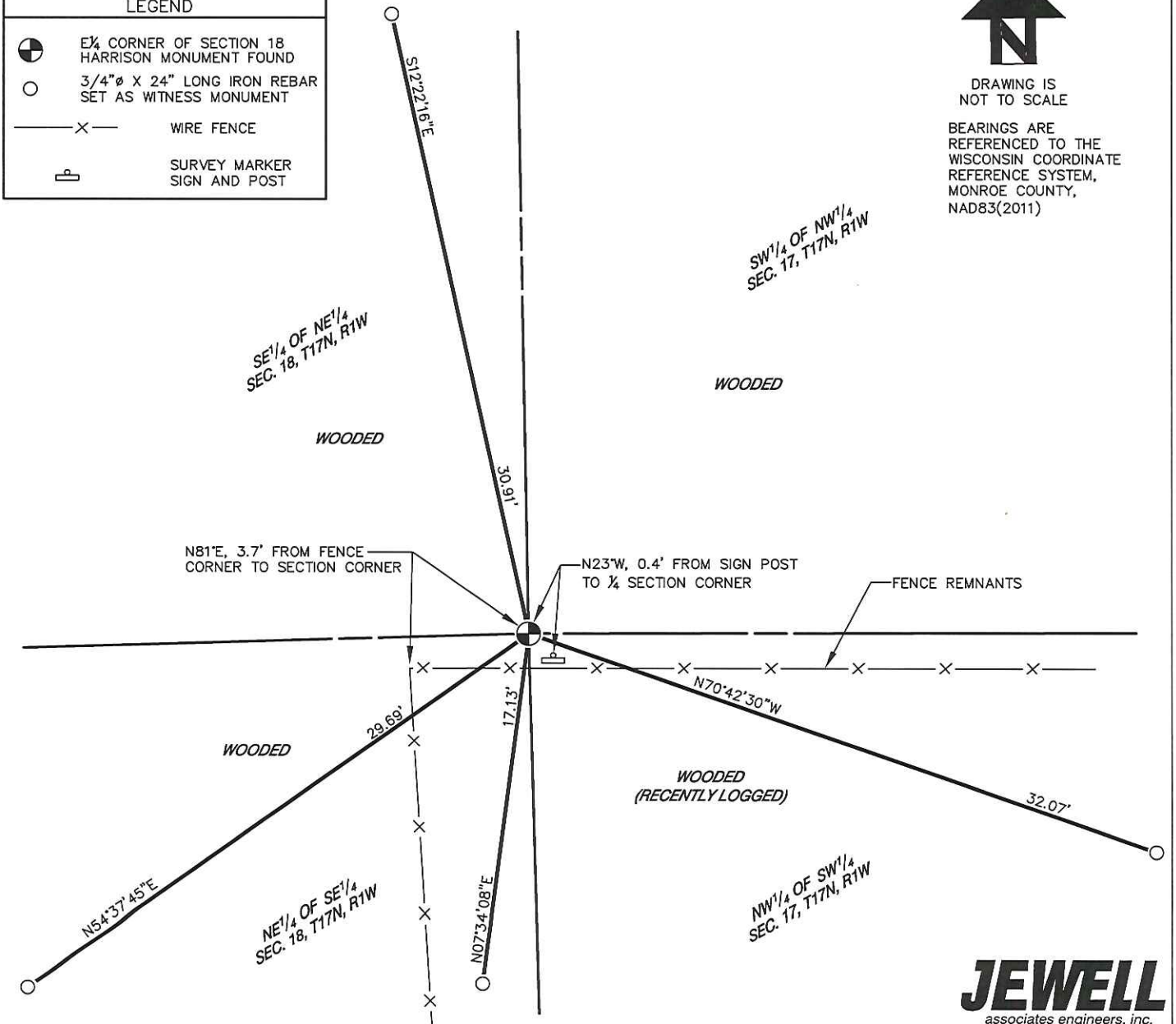
(D) SHOW A PLAN VIEW DRAWING DEPICTING THE RELEVANT MONUMENTS AND REFERENCE TIES WHICH IS SUFFICIENT IN DETAIL TO ENABLE ACCURATE RELOCATION OF THE CORNER MONUMENT IF IT IS DISTURBED.

LEGEND	
	E 1/4 CORNER OF SECTION 18 HARRISON MONUMENT FOUND
	3/4" Ø X 24" LONG IRON REBAR SET AS WITNESS MONUMENT
	WIRE FENCE
	SURVEY MARKER SIGN AND POST



DRAWING IS NOT TO SCALE

BEARINGS ARE REFERENCED TO THE WISCONSIN COORDINATE REFERENCE SYSTEM, MONROE COUNTY, NAD83(2011)



SS #

(E) DESCRIBE ANY MATERIAL DISCREPANCY BETWEEN THE LOCATION OF THE CORNER AS RESTORED OR REESTABLISHED AND THE LOCATION OF THAT CORNER AS PREVIOUSLY RESTORED OR REESTABLISHED BY DISTANCE AND DIRECTION. SHOW THE DISCREPANCY ON THE PLAN VIEW DRAWING UNDER (D), ABOVE. SHOW THE DISTANCES BETWEEN THE CORNER AS PREVIOUSLY RESTORED OR REESTABLISHED AND (1) THE CORNER AS RESTORED OR REESTABLISHED, AND (2) TO AT LEAST 2 OF THE WITNESS MONUMENTS SHOWN ON THE DRAWING IN (D) ABOVE.

NO DISCREPANCY FOUND

(F) WAS THE CORNER RESTORED THROUGH ACCEPTANCE OF (1) AN OBLITERATED EVIDENCE LOCATION, OR, (2) A FOUND PERPETUATED LOCATION?

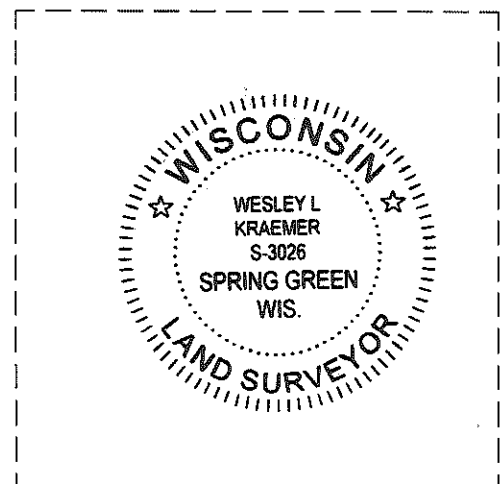
(2) A FOUND PERPETUATED LOCATION.

(G&H) WAS THE CORNER REESTABLISHED THROUGH LOST CORNER PROPORTIONATE METHODS? IF SO, SHOW THE METHOD, INCLUDING THE DIRECTIONS AND DISTANCES TO OTHER PUBLIC LAND SURVEY CORNERS USED AS EVIDENCE OR USED FOR PROPORTIONING IN DETERMINING THE CORNER LOCATION.

(G) NO
(H) N/A

AFFIX LAND SURVEYOR SEAL

(I) I, WESLEY L. KRAEMER, PLS-3026, CERTIFY THAT THE CORNER LOCATION SHOWN ON THIS RECORD WAS DETERMINED BY ME OR UNDER MY DIRECTION AND CONTROL AND THAT THIS U.S. PUBLIC LAND SURVEY MONUMENT RECORD IS CORRECT AND COMPLETE TO THE BEST OF MY KNOWLEDGE AND BELIEF.



W L Kraemer
SIGNATURE

6/5/2017
DATE

CERTIFICATE

CERTIFIED LAND CORNER

No. 55

21701182000

I, Harley A. Sime, do hereby certify that on the 19th day of August 1980, I found ~~(evidence)~~ (no evidence) of the E¹/₄ corner of Section 18, T 17 N, R 1 W Fourth Principal Meridian, and I re-established said corner according to the Wisconsin Statutes as shown and described hereon.

History of corner establishment since Original Government Survey

F. Zietlow set an iron bar here in September of 1970.

Description of corner evidence found:

Found Zietlow's iron bar tied to the top of a fence post. Reset corner from Zietlow's survey. Set Harrison Monument.

Dated this 30th day of Dec. 1980.

Approved: HARLEY A. SIME
MONROE CO. SURVEYOR

Title

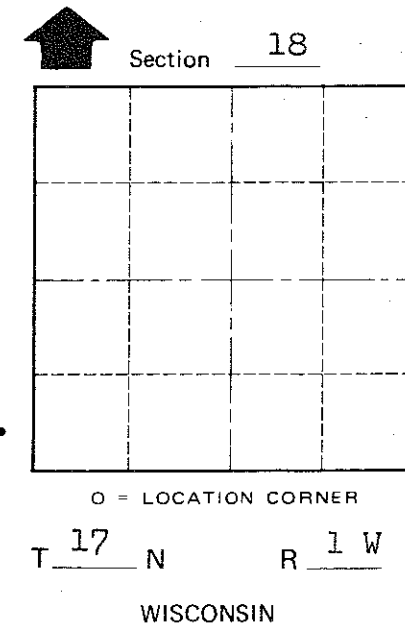
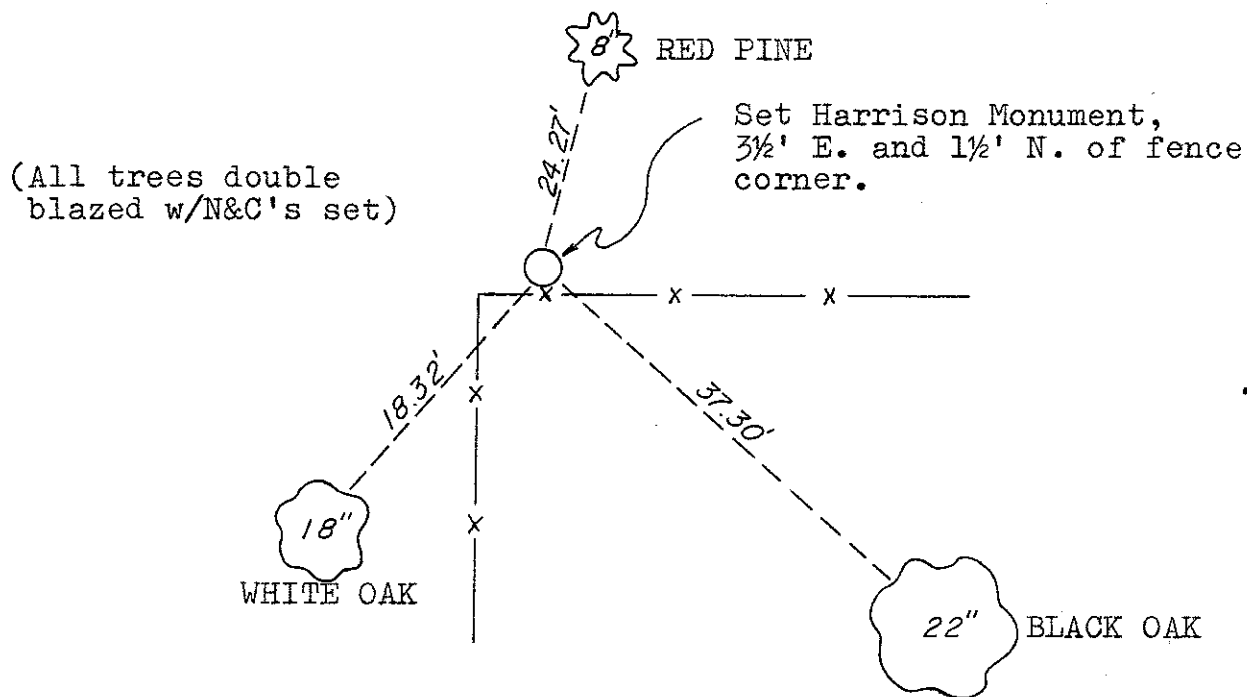
COUNTY SURVEYOR FORM NO. 1

Description of corner and witness monuments, references and accessories used to perpetuate the original or re-established location of this corner:

Witnesses to corner location:

G. Dechant

C. Pietz



SURVEY CONTROL ORDER

Horizontal	_____
Vertical	_____

WISCONSIN COORDINATE SYSTEM

Corner	East (X)	North (Y)	Elevation (Z)	Zone
Control Sta. Name				

~~City, Village or Town~~ Tomah
County of Monroe