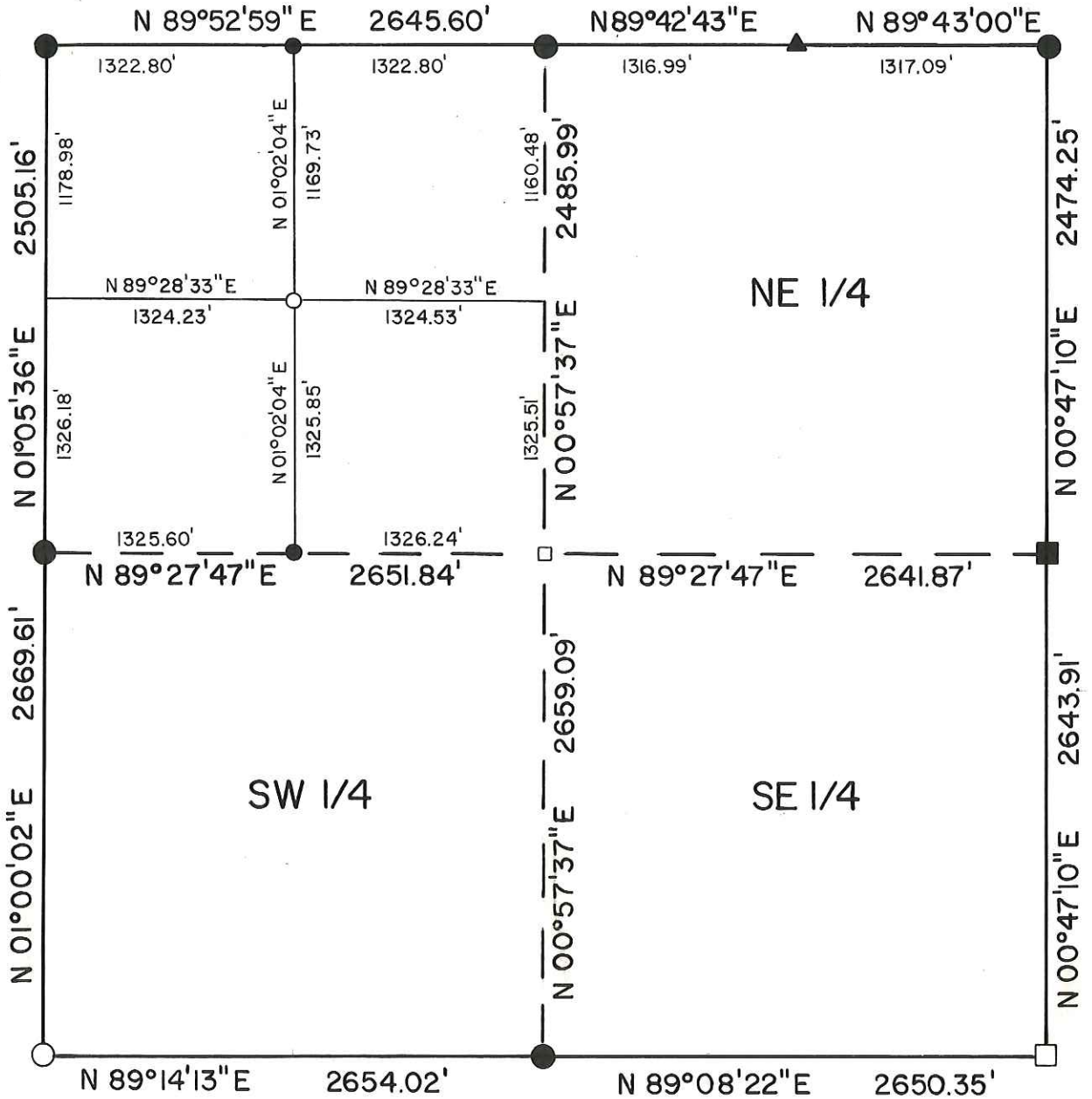
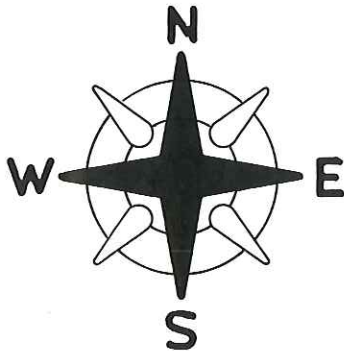


Section 3-T17N-R1W
 City of Tomah
 Monroe County, Wisconsin



September 19, 1977



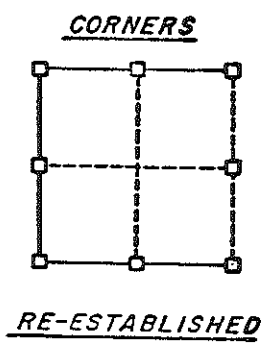
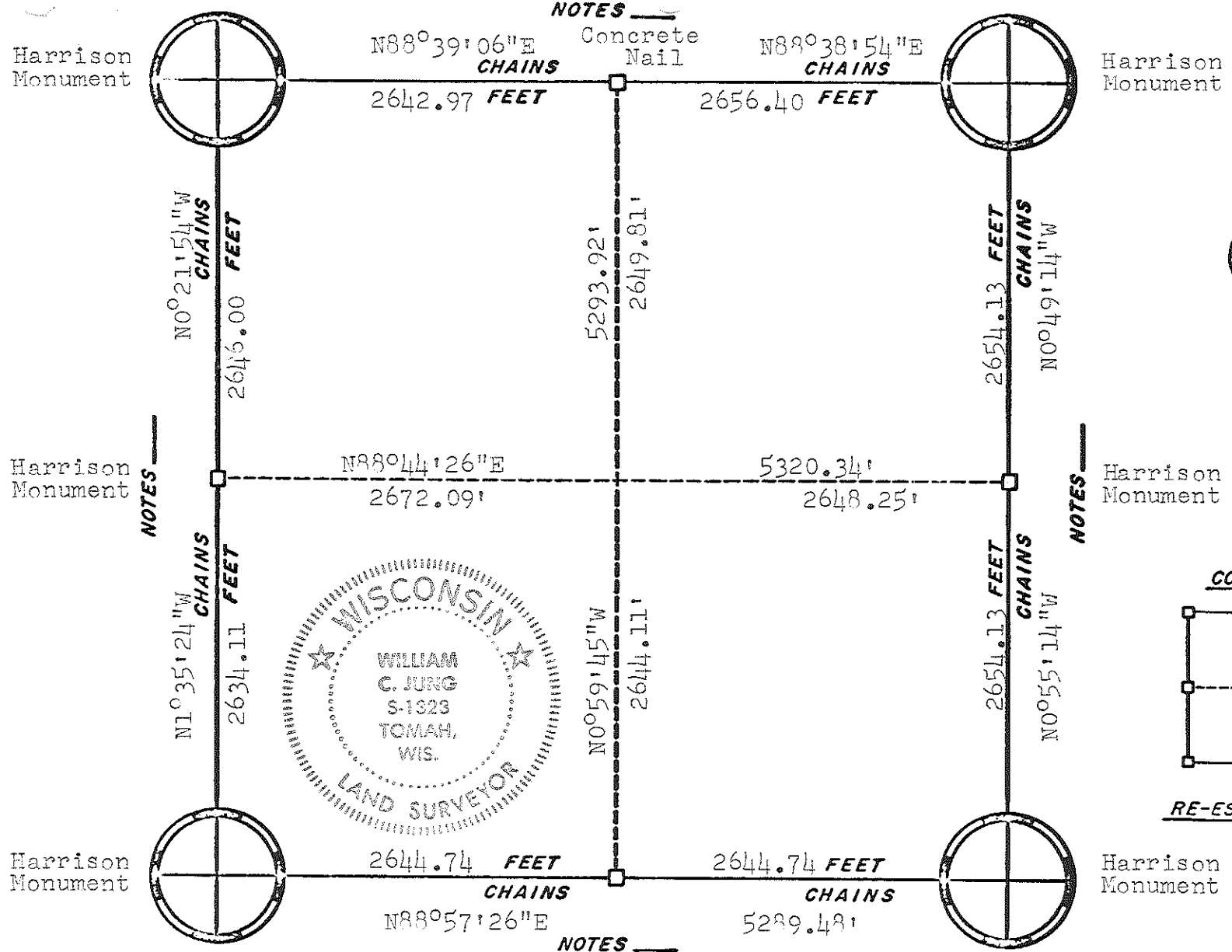
TRUE NORTH

- = Harrison Monument
- = Existing Brass Cap
- ▲ = Existing Railroad Spike
- = Existing Chiselled Cross
- = 1 1/4" Iron Bar
- = 2 1/2" Iron Pipe
- = 3/4" x 24" Iron Bar
- = 2 3/8" x 71" Iron Pipe over 3/4" x 24" Iron Bar



(NO SCALE)

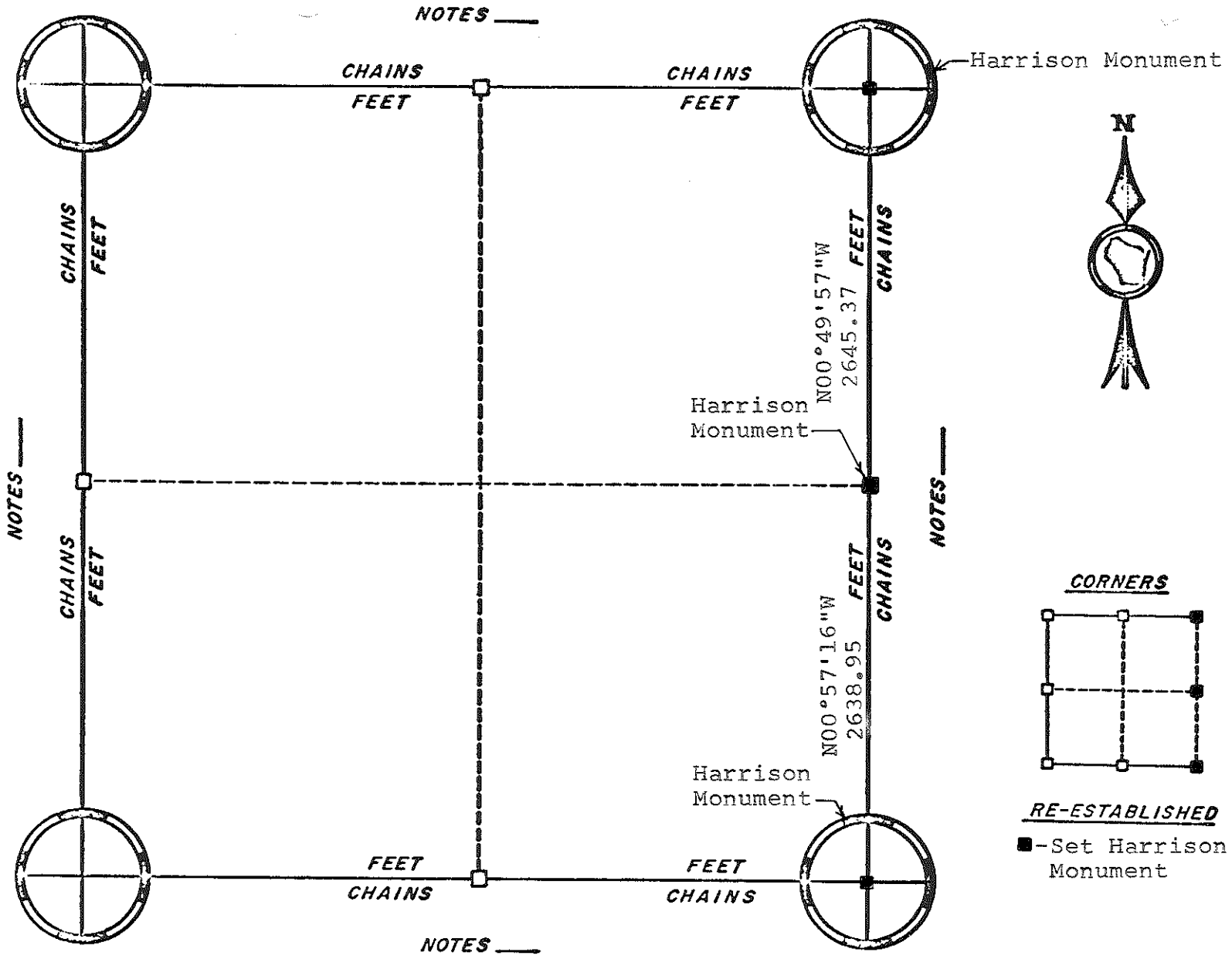
NOTES _____



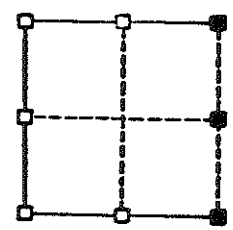
ORIGINAL SURVEY DATA

BY *W.C.J.*
 DATE 3/7/79

SURVEYED BY	CONTRACT DATE	COUNTY MONROE	TOWN-VILLAGE-CITY	SECTION	TOWNSHIP	RANGE
W. C. Jung	Sept. 1976		Tomah	16	17N	1W



CORNERS



RE-ESTABLISHED

■ - Set Harrison Monument

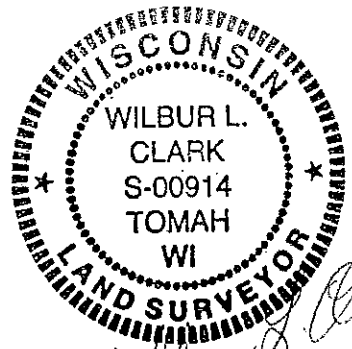
BY

DATE June 1982

ORIGINAL SURVEY DATA

SURVEYED BY L. A. Feddersen	CONTRACT DATE June 1982	COUNTY MONROE	TOWN-VILLAGE-CITY Tomah	SECTION 25	TOWNSHIP 17N	RANGE 1W
--------------------------------	----------------------------	------------------	----------------------------	---------------	-----------------	-------------

WLC 4-1998 SECTION 26, T11N, R1W, TOWN OF TOMAH. 1. 2.
 "WORK SHEET"



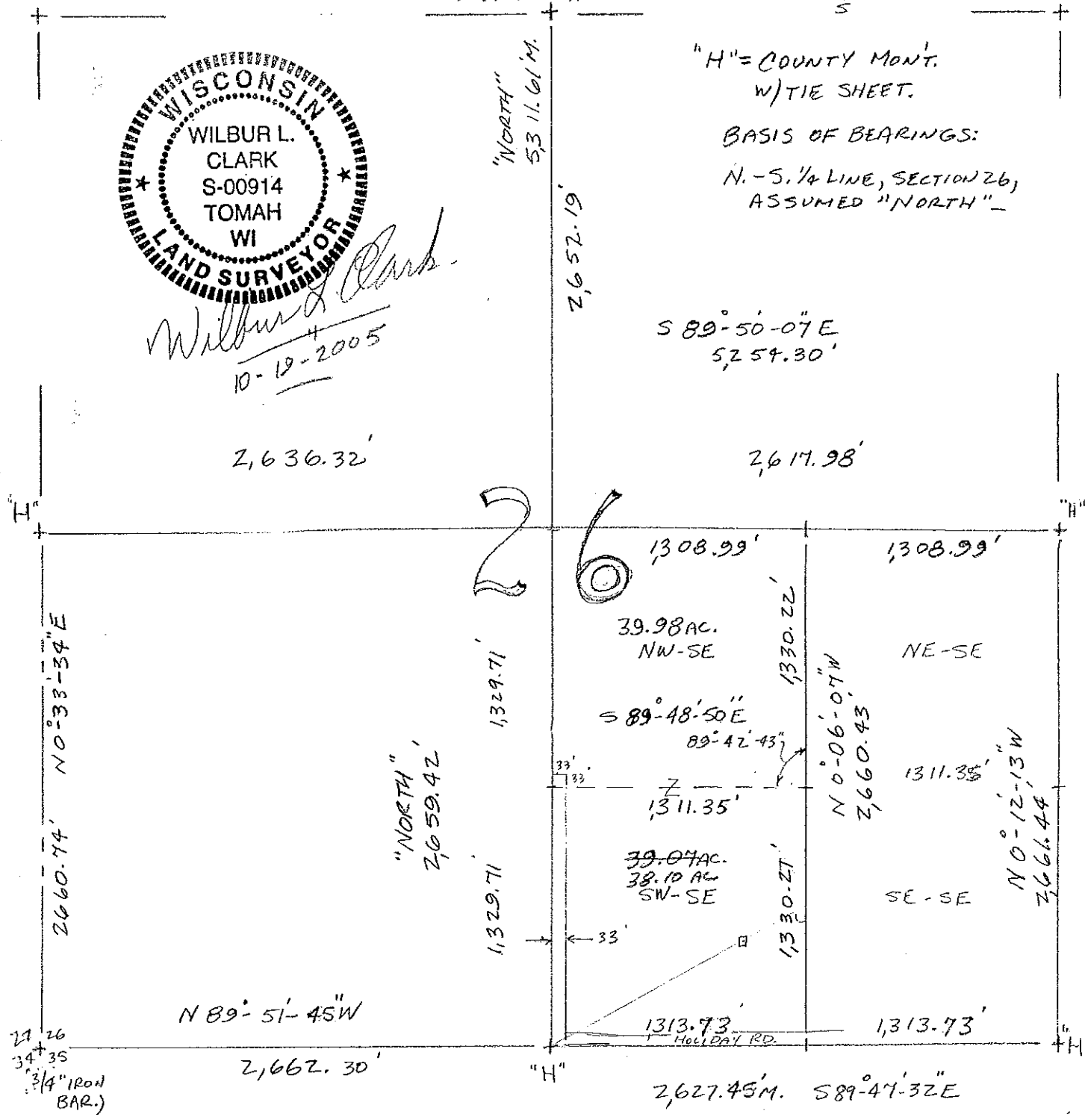
Wilbur L. Clark
 10-19-2005

N. 1/4 COR. "H"

"H" = COUNTY MONT.
 W/TIE SHEET.

BASIS OF BEARINGS:

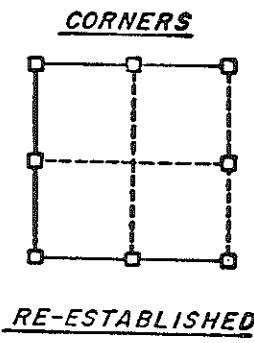
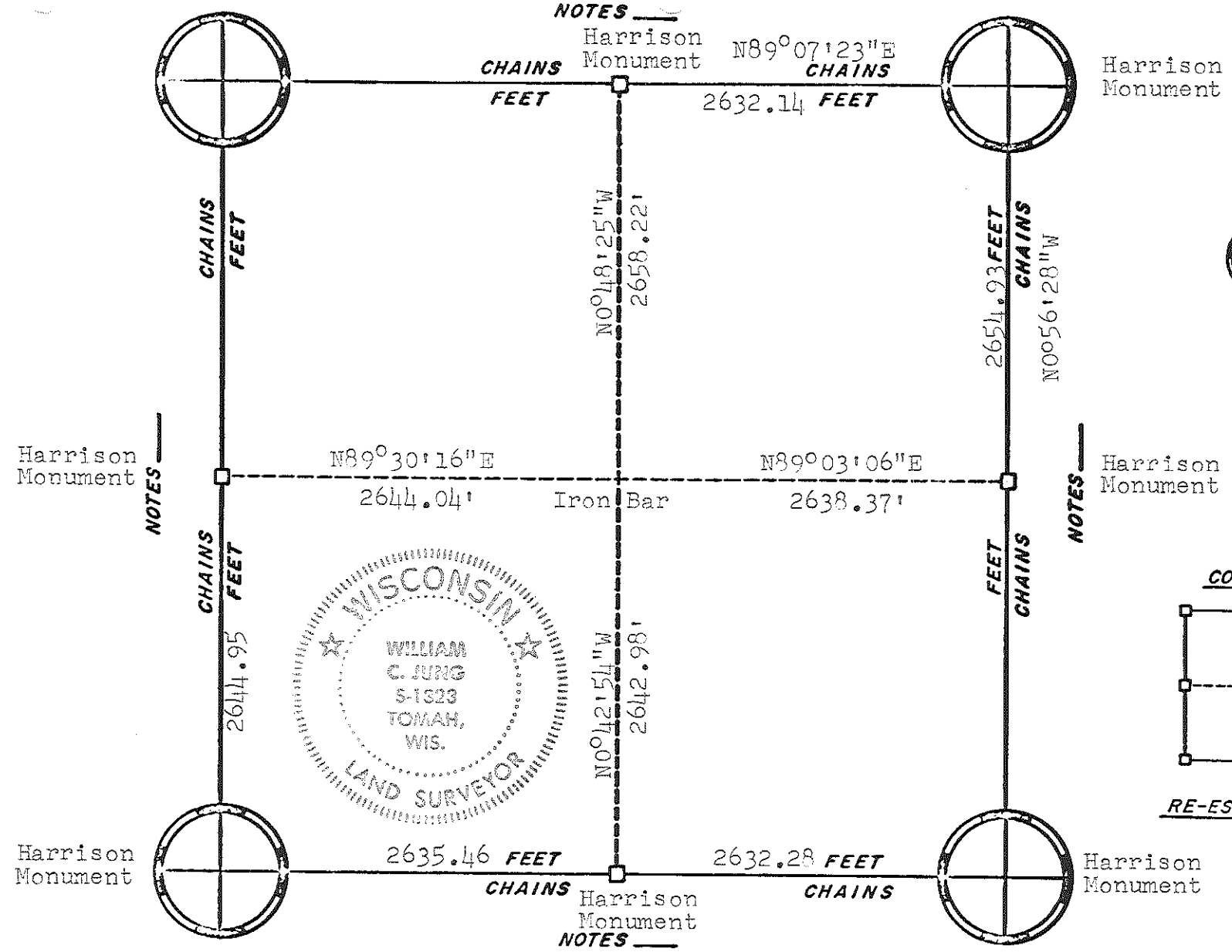
N. - S. 1/4 LINE, SECTION 26,
 ASSUMED "NORTH"



21 26
 34 35
 3/4" IRON
 BAR.)

HOLIDAY RD.

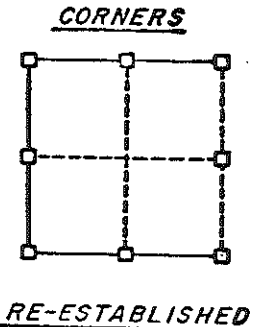
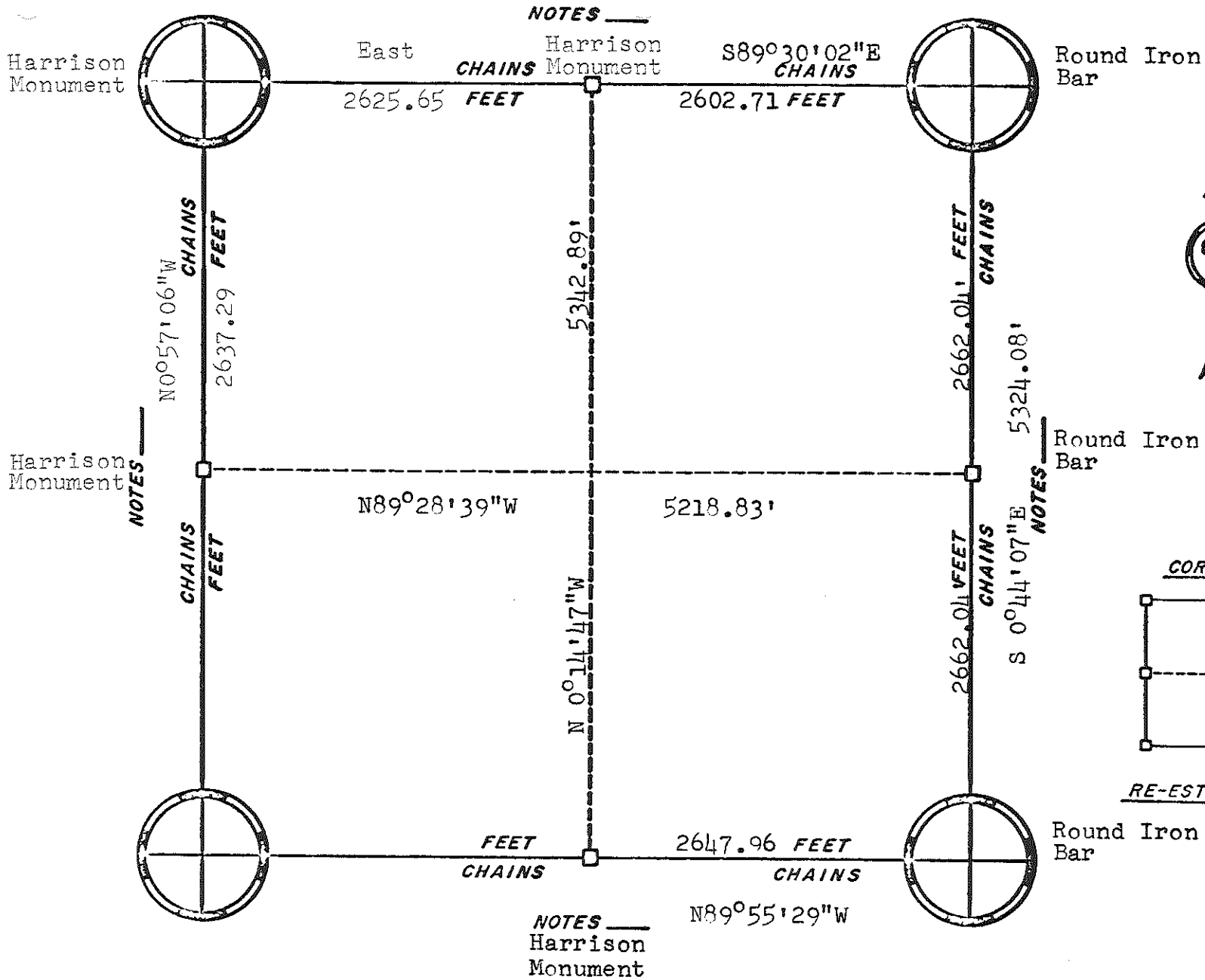
NOTES _____



ORIGINAL SURVEY DATA

BY *W.C.J.*
 DATE 3/7/79

SURVEYED BY W. C. Jung	CONTRACT DATE June 1978	COUNTY MONROE	TOWN-VILLAGE-CITY Tomah	SECTION 28	TOWNSHIP 17N	RANGE 1W
---------------------------	----------------------------	---------------	----------------------------	---------------	-----------------	-------------



ORIGINAL SURVEY DATA

BY _____
DATE March 13, 1980

SURVEYED BY H. A. SIME G. A. Sime	CONTRACT DATE Feb. 9, 1981 March 1978	COUNTY MONROE	TOWN-VILLAGE-CITY Tomah	SECTION 34	TOWNSHIP 17N	RANGE 1W
---	---	---------------	----------------------------	---------------	-----------------	-------------

