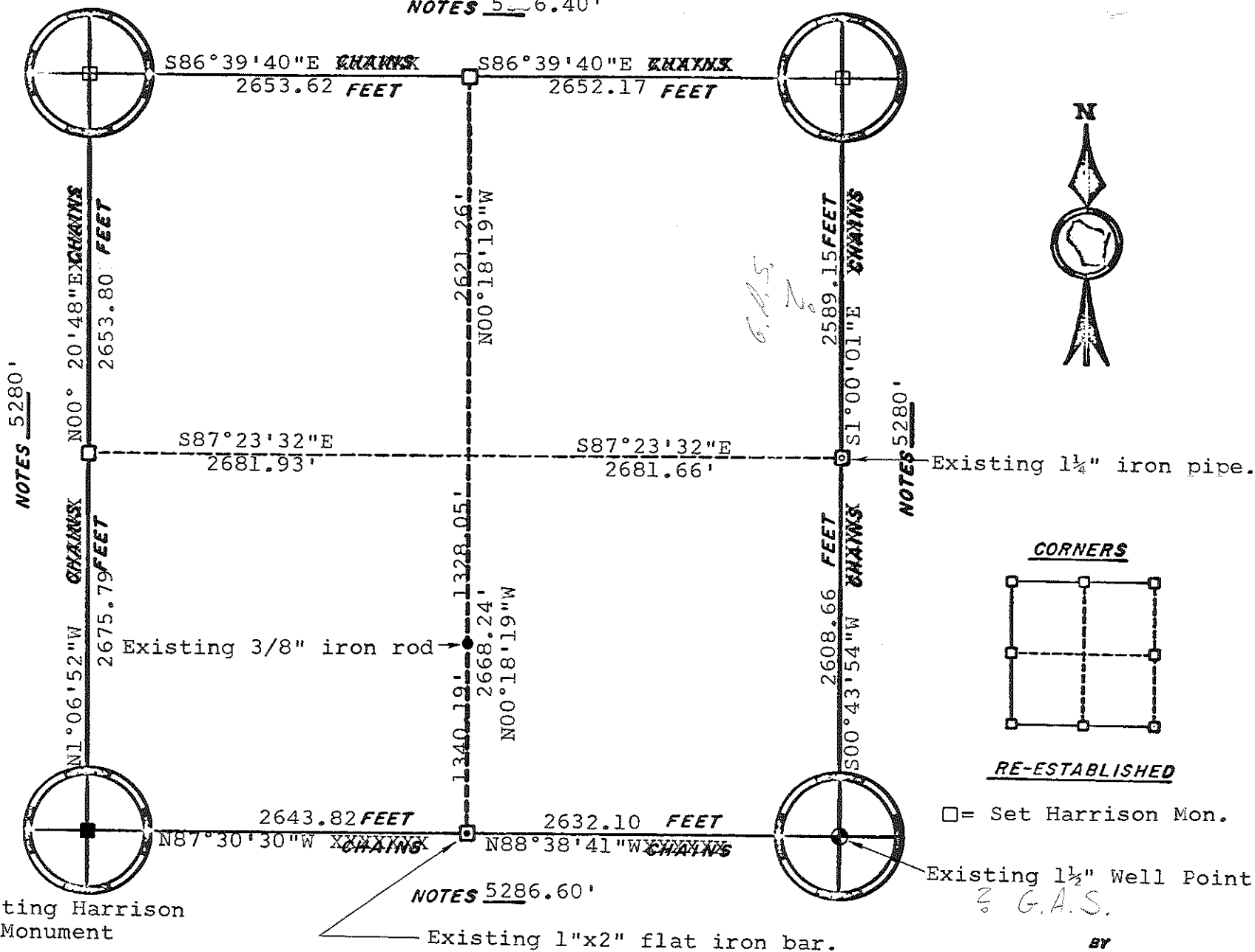


ORIGINAL SURVEY DATA

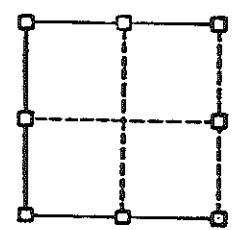
BY _____
DATE 1 August, 1978

SURVEYED BY L.A. Feddersen D.J. Malliet	CONTRACT DATE 8 March, 1978	COUNTY MONROE	TOWN - VILLAGE OAKDALE	SECTION 1	TOWNSHIP 17N	RANGE 1E
---	--------------------------------	------------------	--------------------------------------	--------------	-----------------	-------------

NOTES 5-6.40'



CORNERS



RE-ESTABLISHED

□ = Set Harrison Mon.

NOTES 5286.60'
 ORIGINAL SURVEY DATA

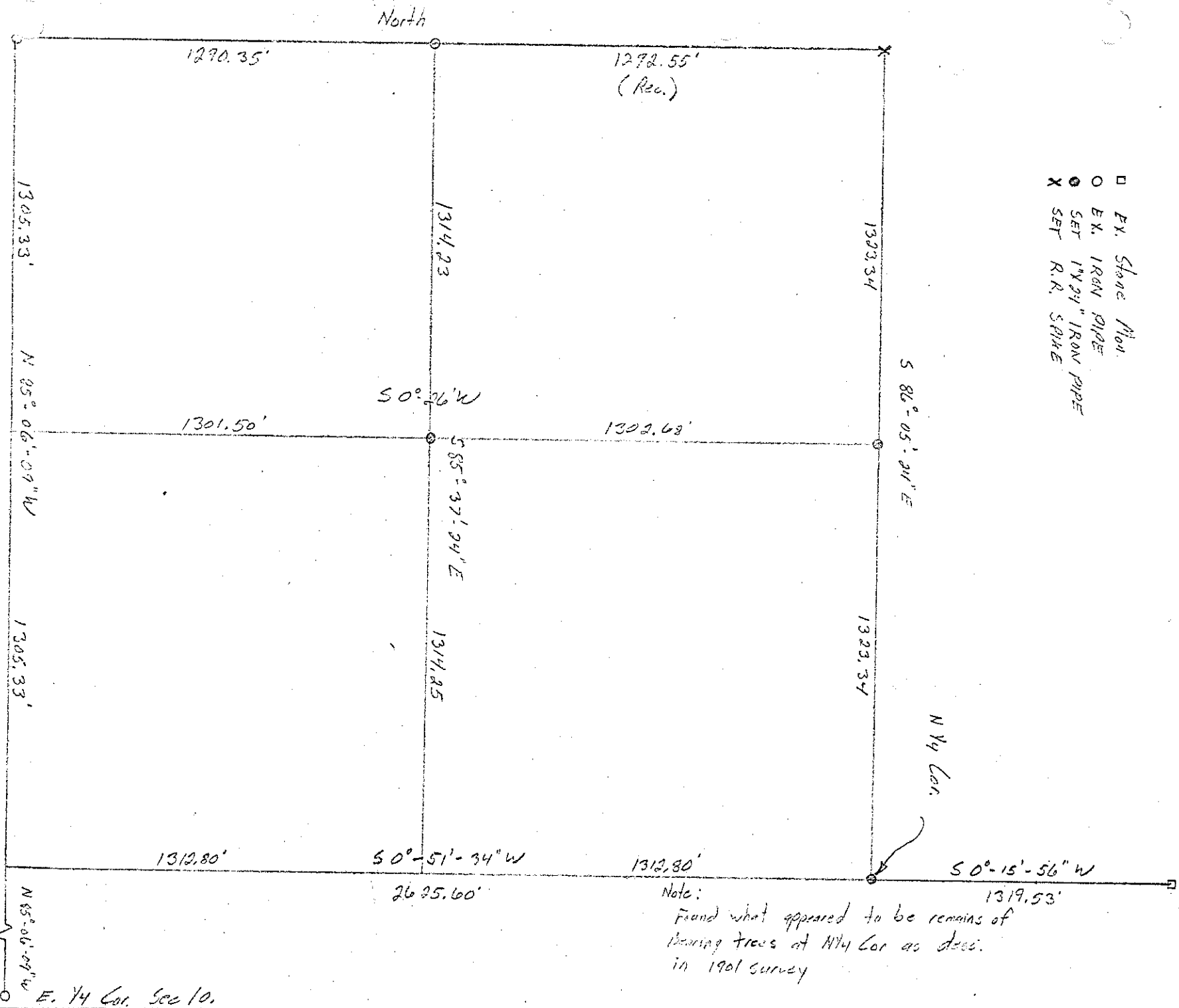
BY _____
 DATE Dec., 1977

SURVEYED BY L.A.Feddersen M.R.Heidecke	CONTRACT DATE 1977	COUNTY MONROE	TOWN- XXXXXXX Oakdale	SECTION 9	TOWNSHIP 17N	RANGE 1E
--	-----------------------	---------------	-------------------------------------	--------------	-----------------	-------------

NW 1/4 Sec. 10, T17N, R1E

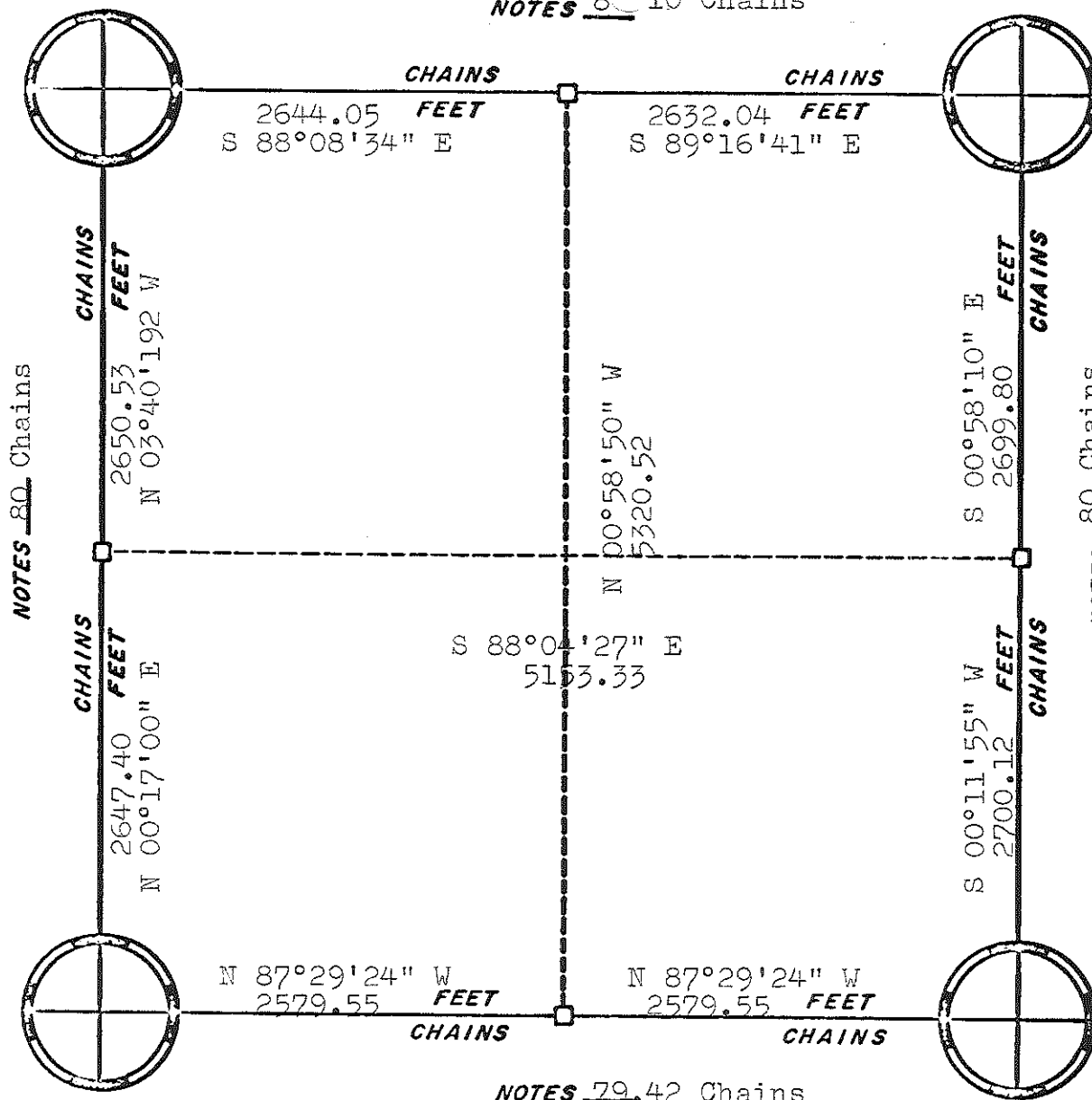
RT. NE 1/4 Links

- EX. Stone Mon.
- EX. IRON PIPE
- SET 1" X 24" IRON PIPE
- X SET R.R. SPIKE



Note:
 Found what appeared to be remains of
 bearing trees at NW Cor as desc.
 in 1901 survey

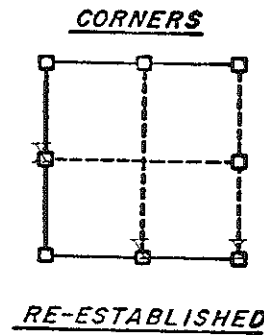
NOTES 8 10 Chains



NOTES 80 Chains

NOTES 80 Chains

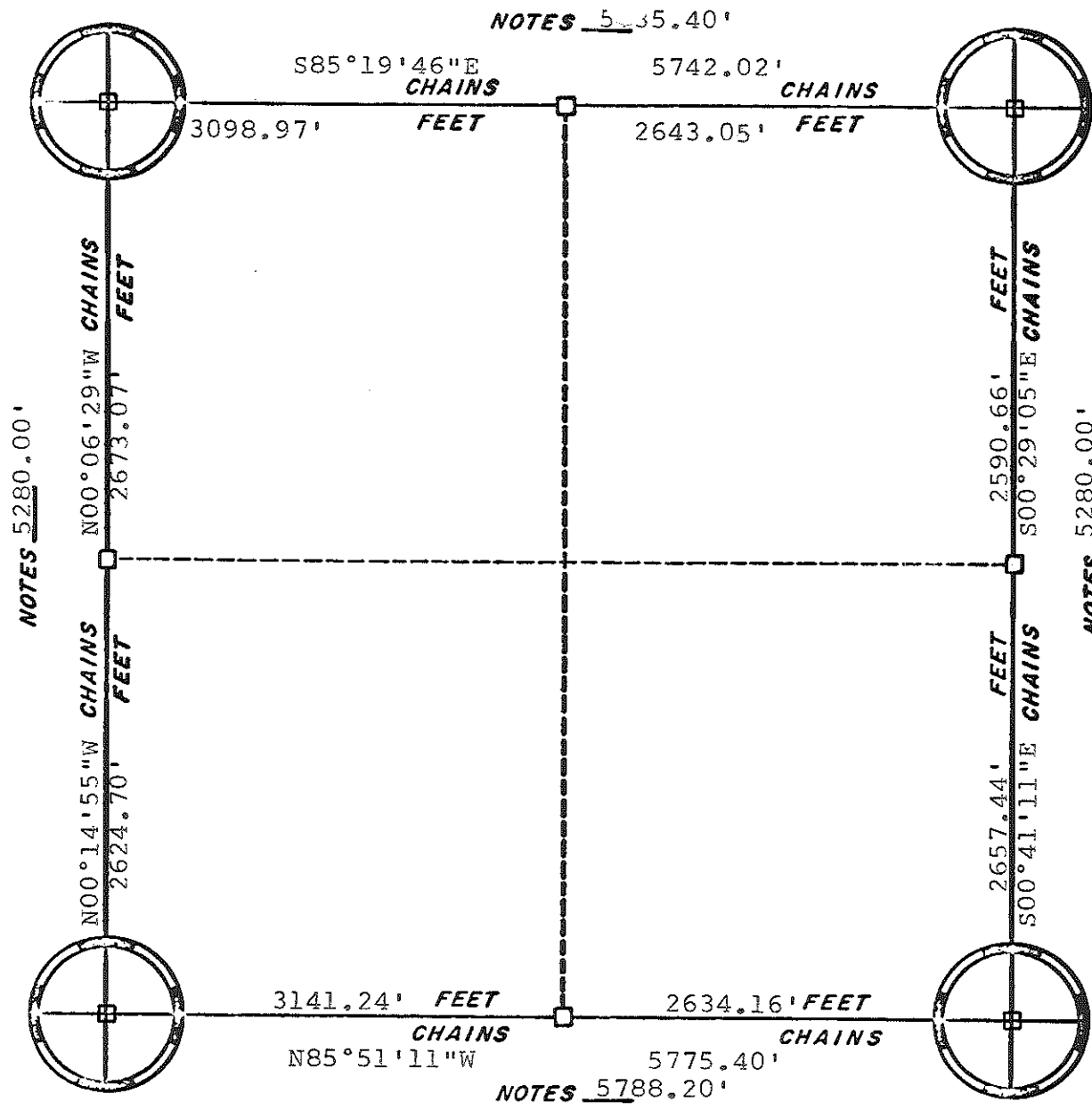
NOTES 79.42 Chains



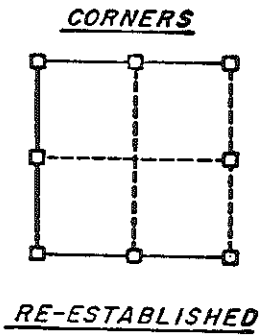
ORIGINAL SURVEY DATA

BY _____
DATE _____

SURVEYED BY L.F. and K.P.	CONTRACT DATE April 5/75	COUNTY MONROE [REDACTED]	TOWN-VILLAGE-CITY Oakdale	SECTION 16	TOWNSHIP 17N	RANGE 1E
------------------------------	-----------------------------	-----------------------------	------------------------------	---------------	-----------------	-------------



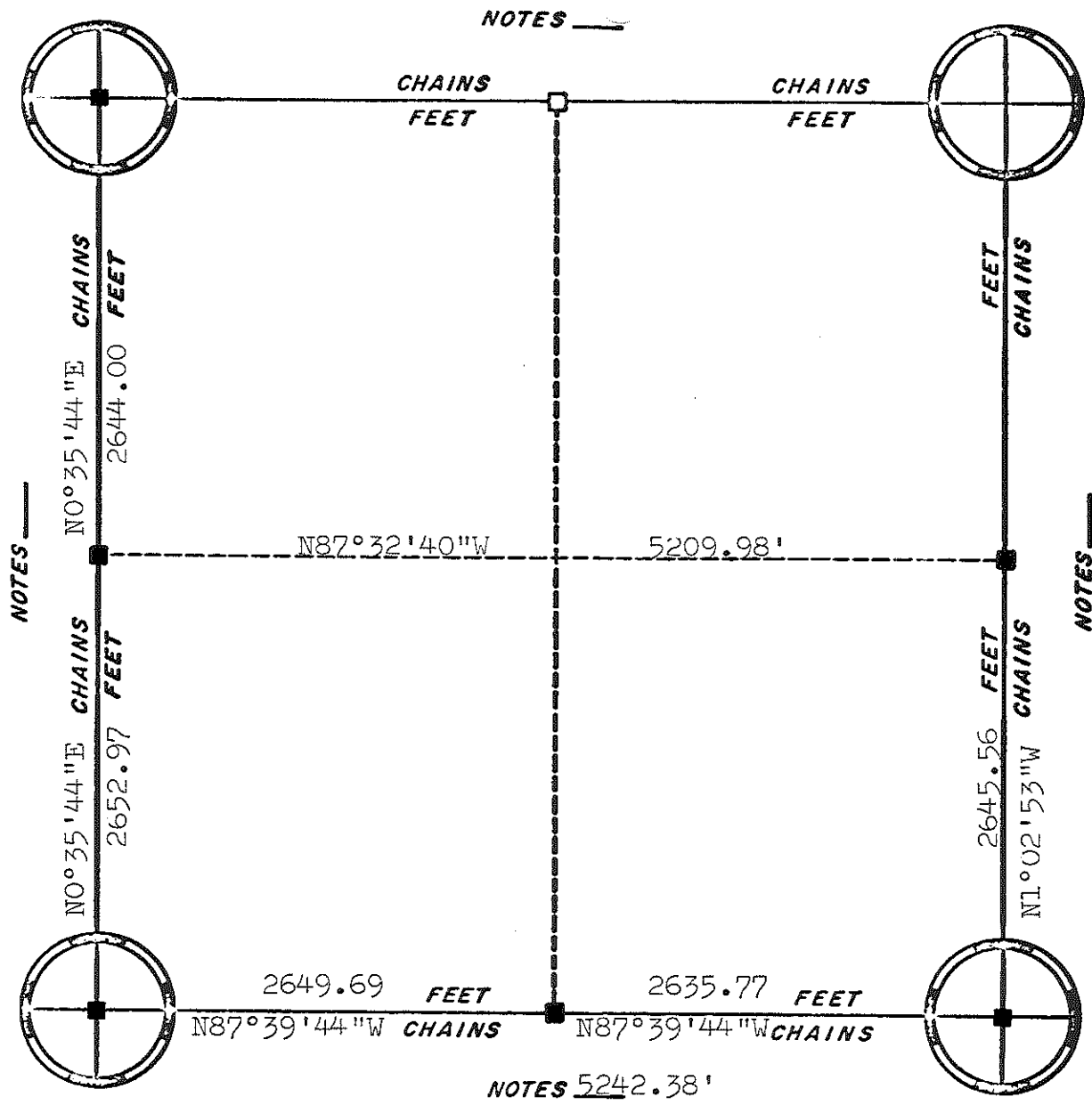
□ = set Harrison



ORIGINAL SURVEY DATA

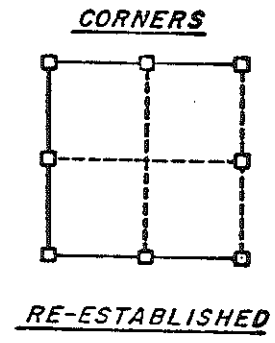
BY _____
DATE 5 Sept., 1978

SURVEYED BY L.A. Feddersen	CONTRACT DATE August, 1978	COUNTY MONROE ██████████	TOWN-VILLAGE-CITY OAKDALE	SECTION 18	TOWNSHIP 17N	RANGE 1E
-------------------------------	-------------------------------	-----------------------------	------------------------------	---------------	-----------------	-------------



ASSUMED NORTH

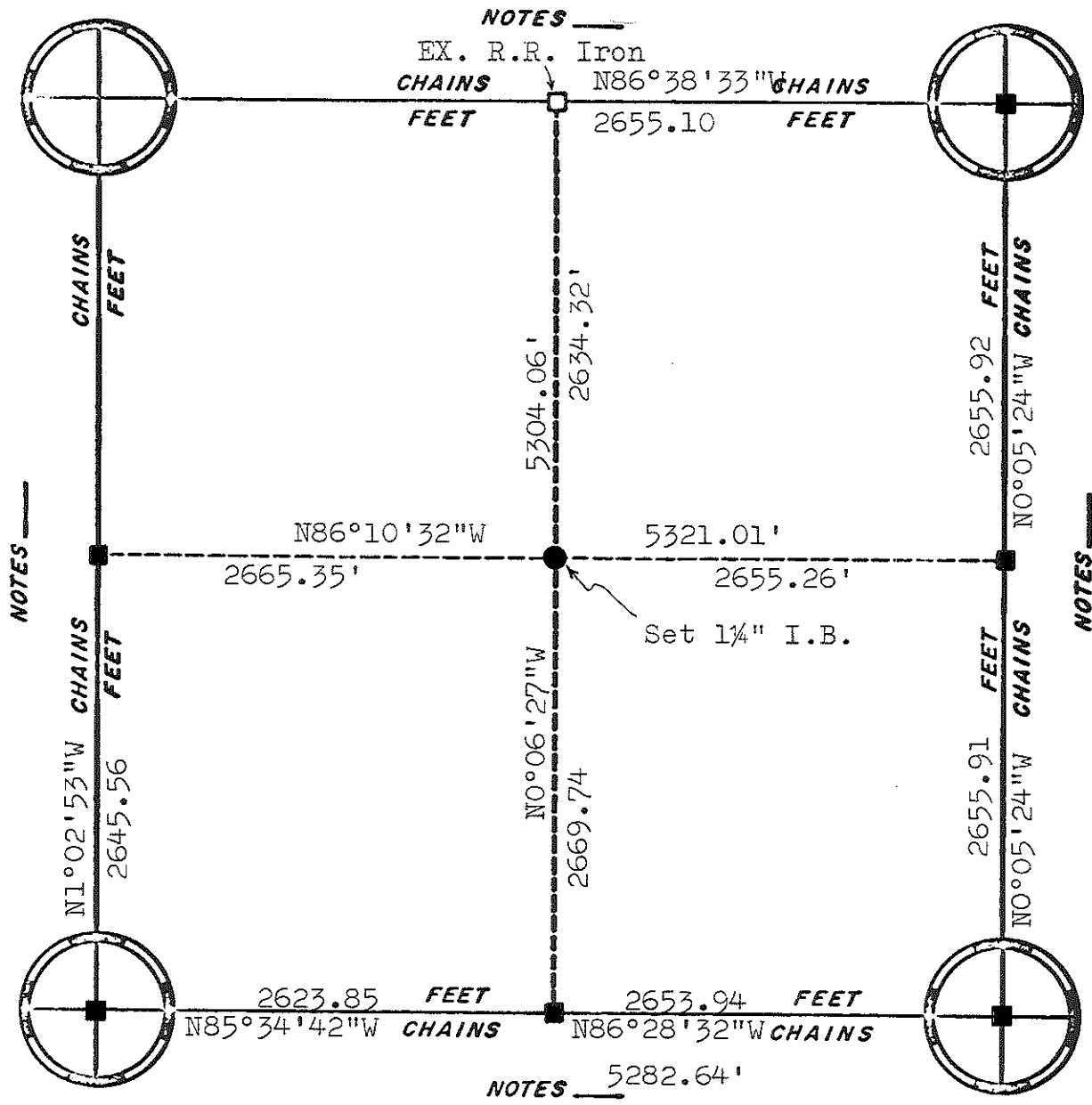
■ = Harrison Monument



ORIGINAL SURVEY DATA

BY _____
 DATE _____

SURVEYED BY	CONTRACT DATE 5-29-1980	COUNTY MONROE	TOWN-VILLAGE-CITY Oakdale	SECTION 21	TOWNSHIP 17N	RANGE 1E
-------------	----------------------------	---------------	------------------------------	---------------	-----------------	-------------



NOTES
 EX. R.R. Iron
 CHAINS N86°38'33"W CHAINS
 FEET 2655.10 FEET

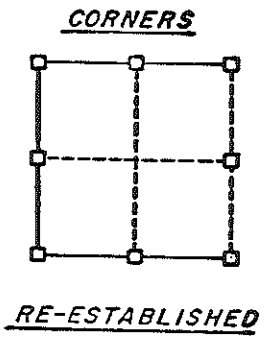
NOTES

NOTES

NOTES 5282.64'



■ = SET HARRISON

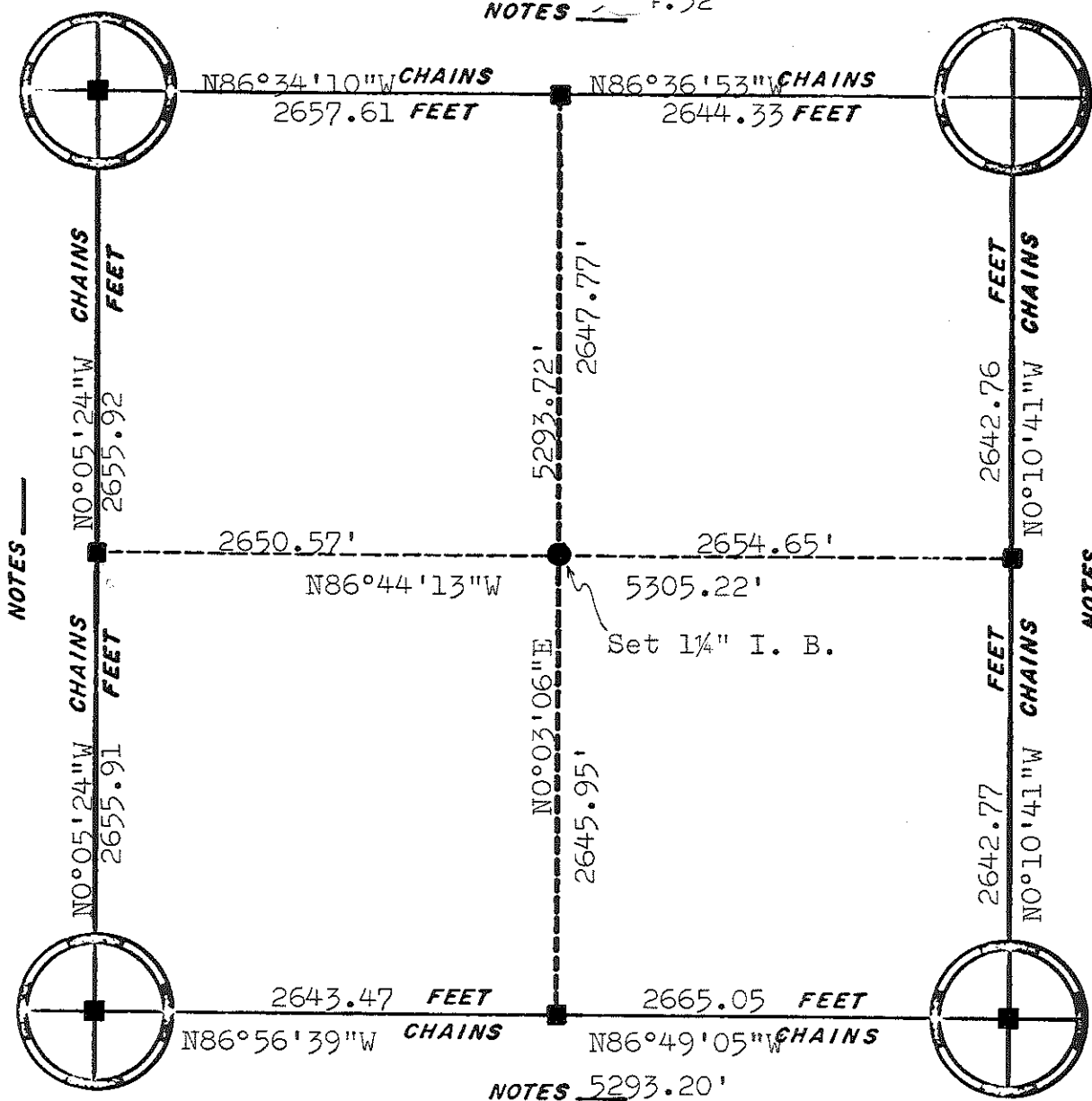


ORIGINAL SURVEY DATA

BY _____
 DATE _____

SURVEYED BY	CONTRACT DATE 5-28-1980	COUNTY MONROE	TOWN-VILLAGE-CITY Oakdale	SECTION 22	TOWNSHIP 17N	RANGE 1E
-------------	----------------------------	---------------	------------------------------	---------------	-----------------	-------------

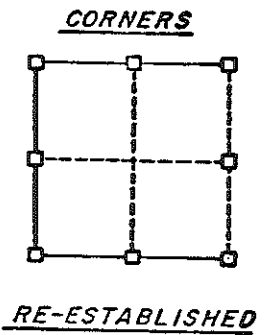
NOTES $E \pm 1.52'$



Existing
1/4" Iron Bar,
Set Harrison on N.
side of iron bar as
witness corner.



■ =Set Harrison



NOTES

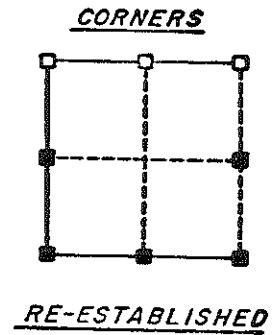
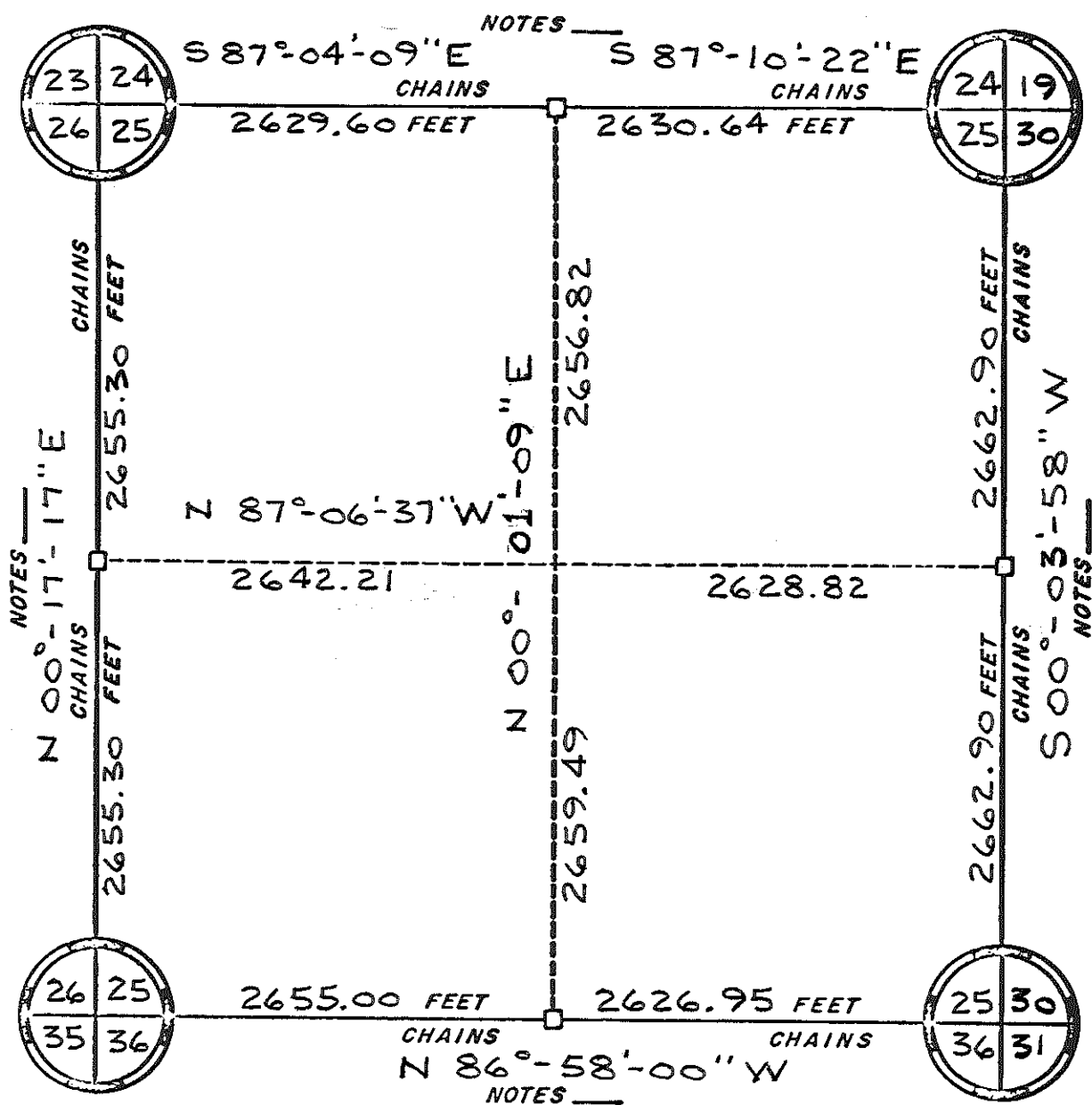
NOTES

NOTES $5293.20'$

ORIGINAL SURVEY DATA

BY _____
DATE _____

SURVEYED BY	CONTRACT DATE	COUNTY	MONROE	TOWN-VILLAGE-CITY	SECTION	TOWNSHIP	RANGE
	5-28-1980			Oakdale	23	17N	1E

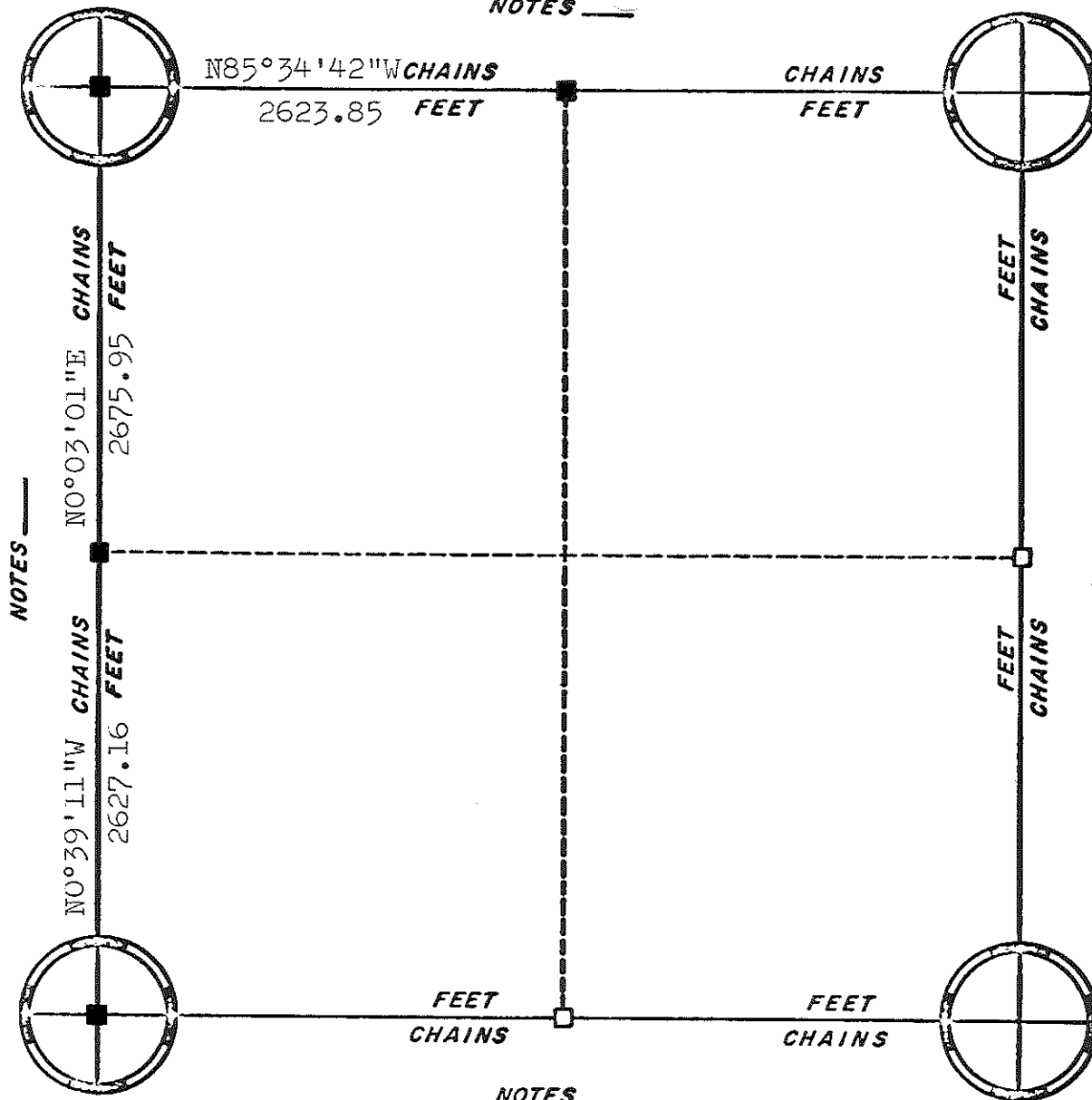


ORIGINAL SURVEY DATA

BY _____
 DATE 12/24/82

SURVEYED BY R. PARISH	CONTRACT DATE	COUNTY MONROE	TOWN-VILLAGE-CITY OAKDALE	SECTION 25	TOWNSHIP T 17 N	RANGE R 1 E
--------------------------	---------------	---------------	------------------------------	---------------	--------------------	----------------

NOTES _____



NOTES _____

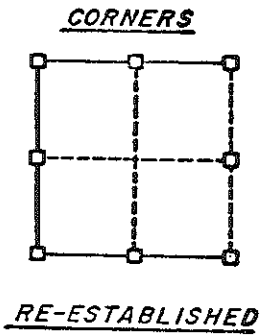
NOTES _____

NOTES _____



ASSUMED NORTH

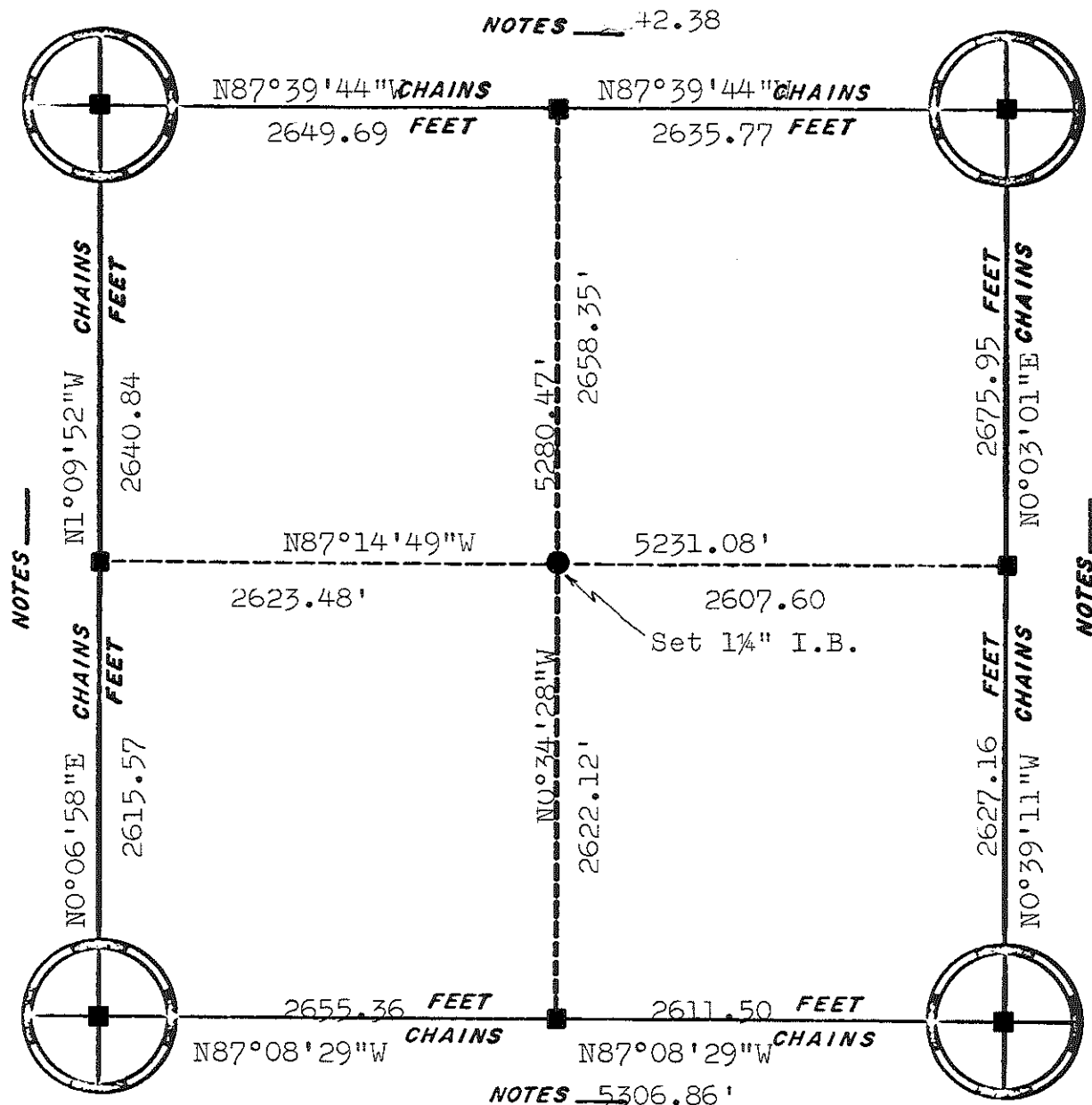
■ = Harrison Monument



ORIGINAL SURVEY DATA

BY _____
DATE _____

SURVEYED BY	CONTRACT DATE	COUNTY MONROE	TOWN-VILLAGE-CITY	SECTION	TOWNSHIP	RANGE
	5-29-1980	██████████	Oakdale	27	17N	1E



NOTES +2.38

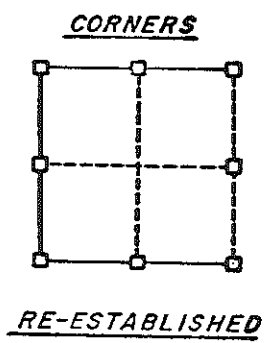
NOTES _____

NOTES _____



ASSUMED NORTH

■ = Set Harrison



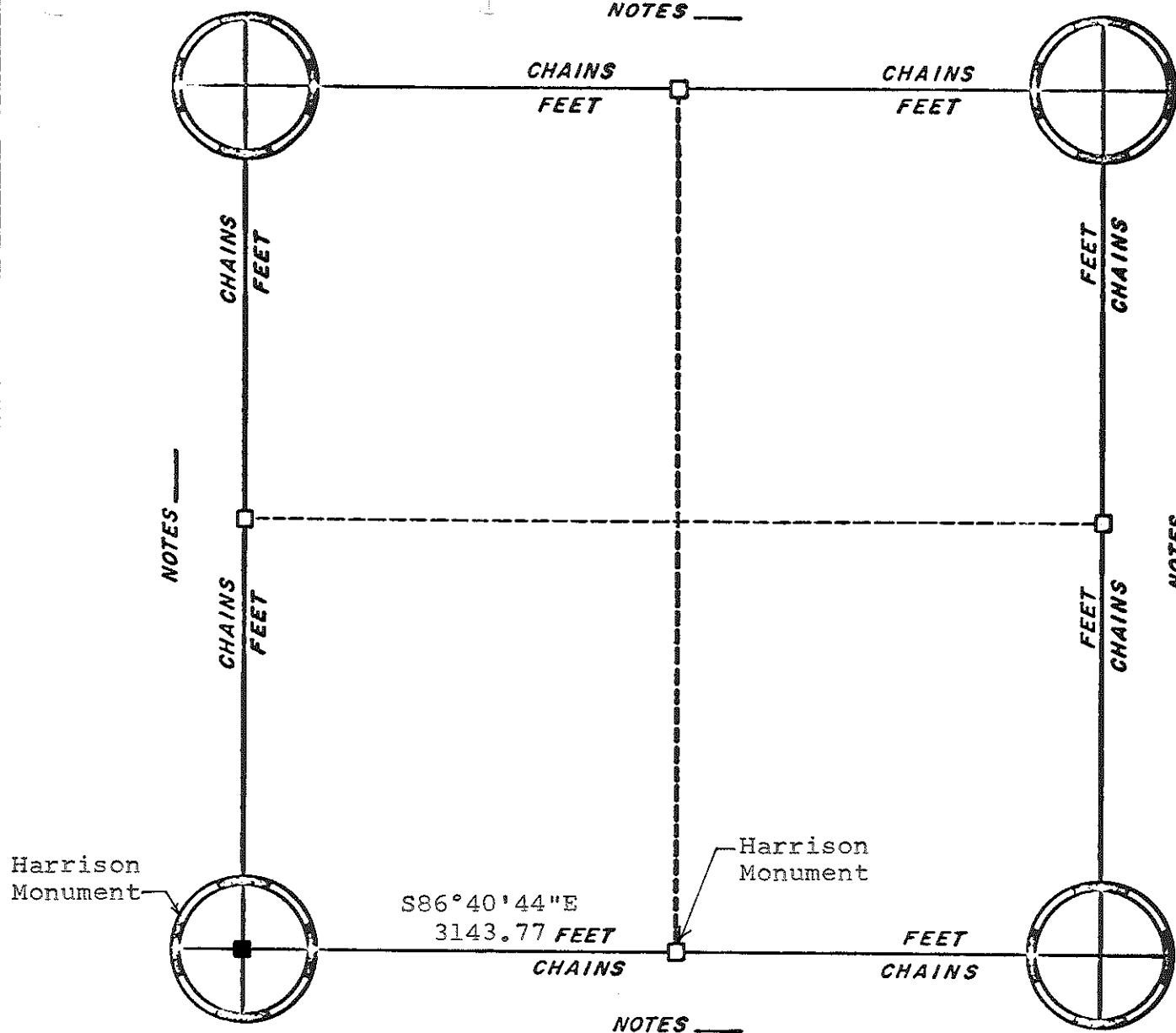
NOTES 5306.86'

ORIGINAL SURVEY DATA

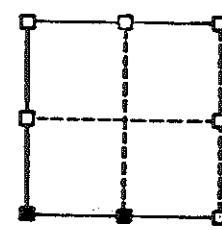
BY _____
 DATE _____

SURVEYED BY	CONTRACT DATE	COUNTY MONROE	TOWN-VILLAGE-CITY	SECTION	TOWNSHIP	RANGE
	5-29-1980		Oakdale	28	17N	1E

NOTES _____



CORNERS



RE-ESTABLISHED

■ - Set Harrison Monument

NOTES _____

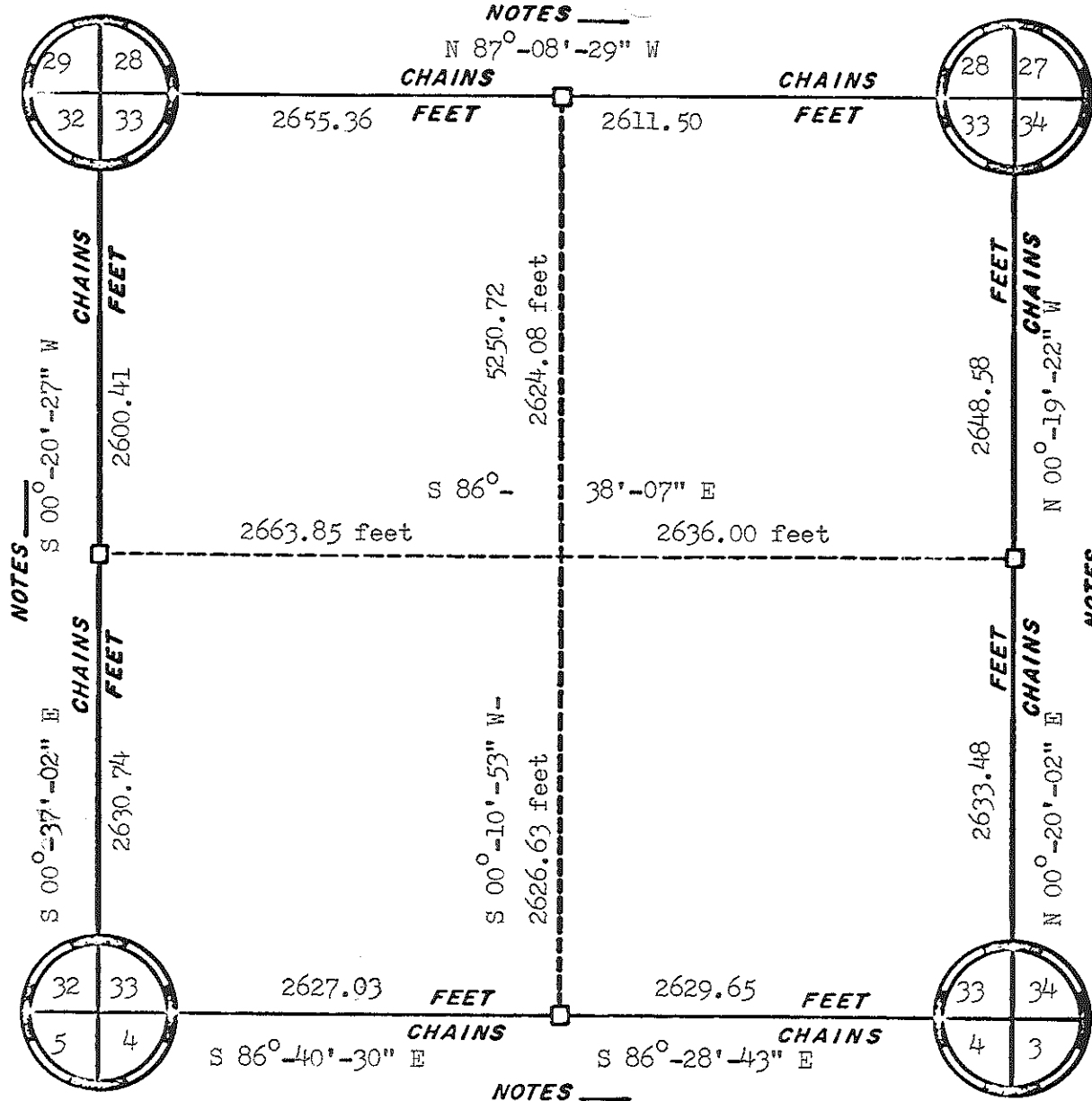
ORIGINAL SURVEY DATA

BY _____

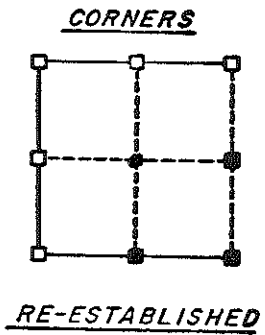
DATE June 1982

SURVEYED BY L. A. Feddersen	CONTRACT DATE June 1982	COUNTY MONROE	TOWN- VILLAGE-CITY Oakdale	SECTION 31	TOWNSHIP 17N	RANGE 1E
--------------------------------	----------------------------	------------------	--	---------------	-----------------	-------------

NOTE: North line and West line previous survey by others



Bearings referenced to North line of Section 33 Assumed to bear N 87°-08'-29\"/>



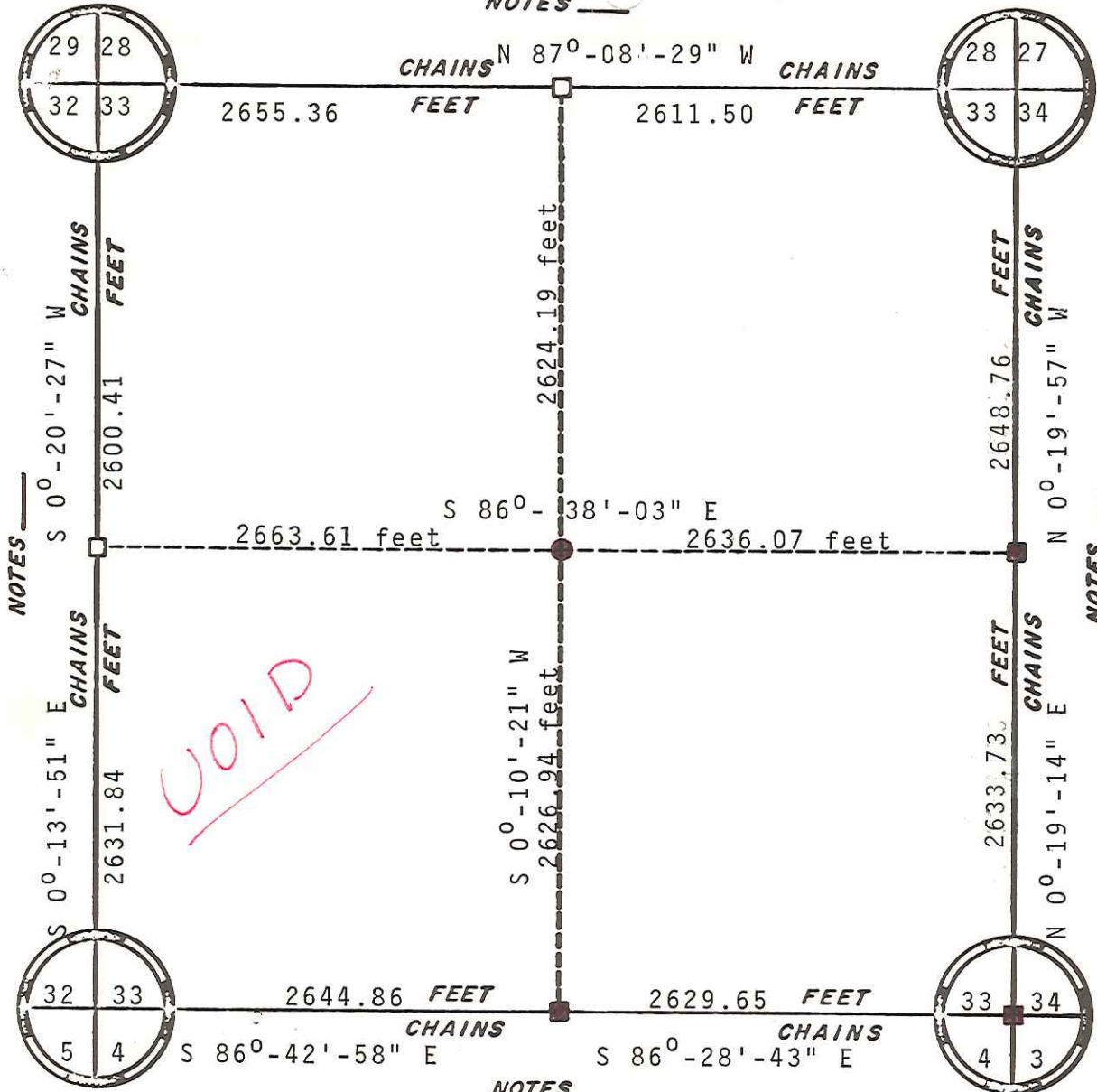
REV. 5/20/84
BY _____
DATE 8/25/83

ORIGINAL SURVEY DATA

SURVEYED BY Ronald Parish	CONTRACT DATE	COUNTY MONROE	TOWN-VILLAGE-CITY Oakdale	SECTION 33	TOWNSHIP T.17 N.	RANGE R.1 E.
------------------------------	---------------	---------------	------------------------------	---------------	---------------------	-----------------

NOTE: North line and West li by previous survey by others.

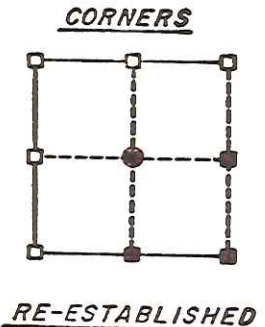
NOTES _____



VOID



Bearings referenced to North line of Section 33 assumed to bear N 87°-08'-29\"



ORIGINAL SURVEY DATA

BY _____
DATE 8/25/83

SURVEYED BY Ronald Parish	CONTRACT DATE	COUNTY MONROE	TOWN-VILLAGE-CITY Oakdale	SECTION 33	TOWNSHIP T.17 N.	RANGE R. 1 E.
------------------------------	---------------	---------------	------------------------------	---------------	---------------------	------------------