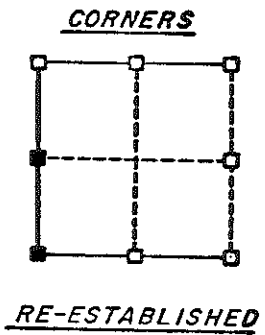
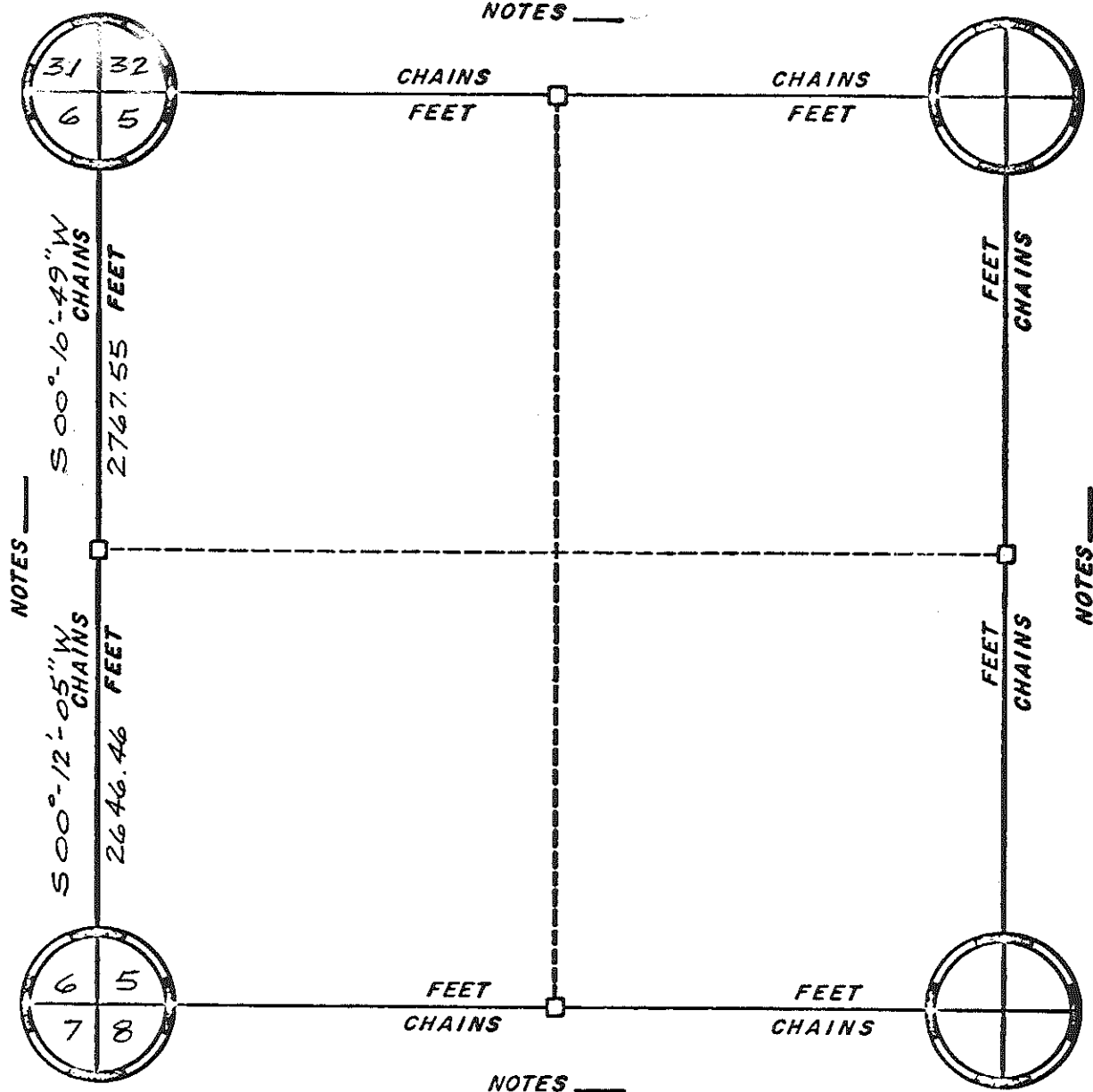


NOTES _____



NOTES _____

NOTES _____

ORIGINAL SURVEY DATA

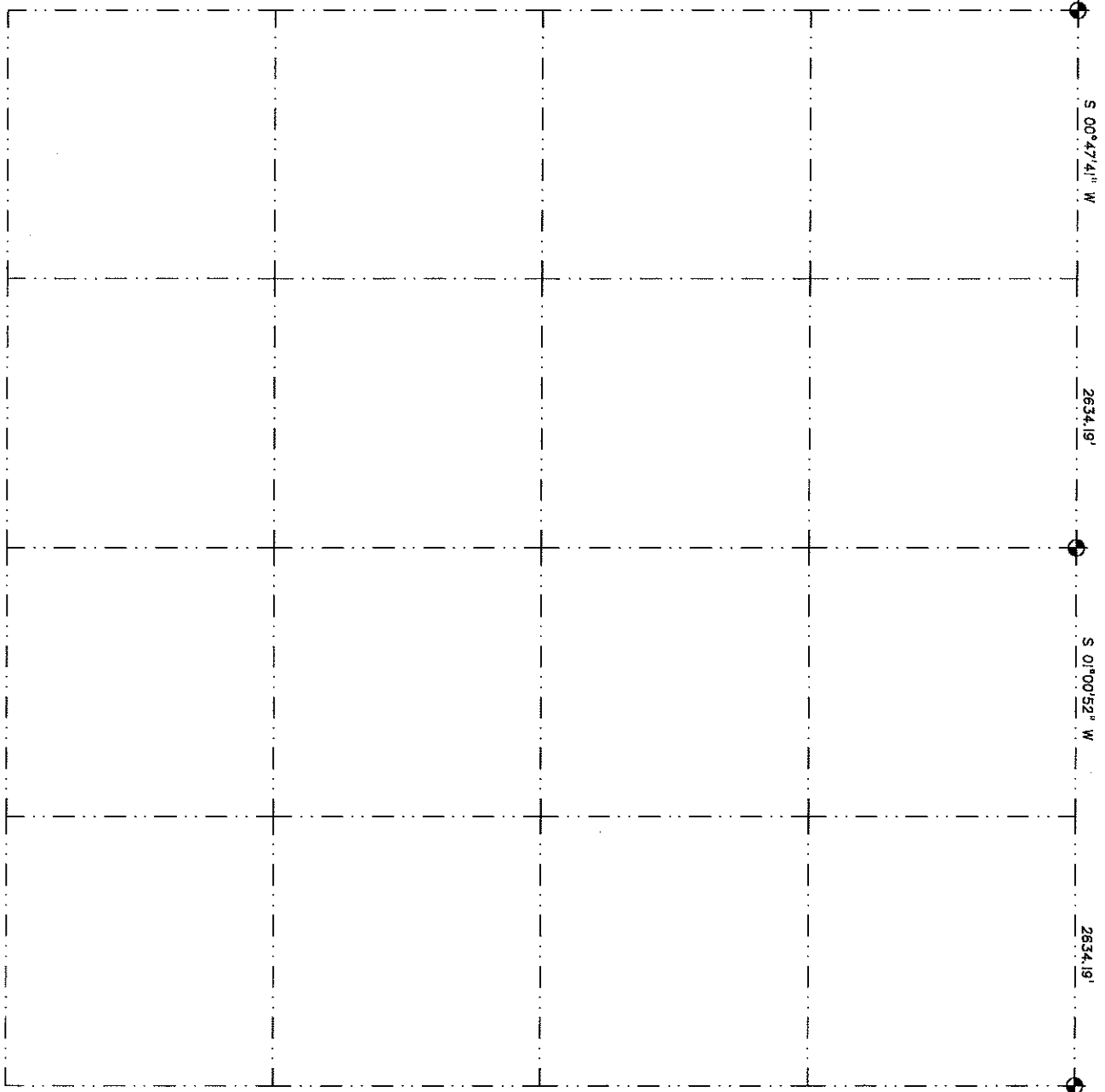
BY _____
DATE JUNE 9, 1984

SURVEYED BY RONALD PARISH	CONTRACT DATE	COUNTY MONROE _____	TOWN-VILLAGE-CITY LEON	SECTION 5	TOWNSHIP T. 16 N.	RANGE R. 4 W
------------------------------	---------------	------------------------	---------------------------	--------------	----------------------	-----------------



Michael J. Harding
4-21-99

SECTION 7
TOWN 16 NORTH - RANGE 4 WEST



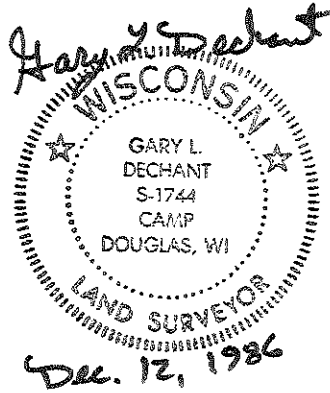
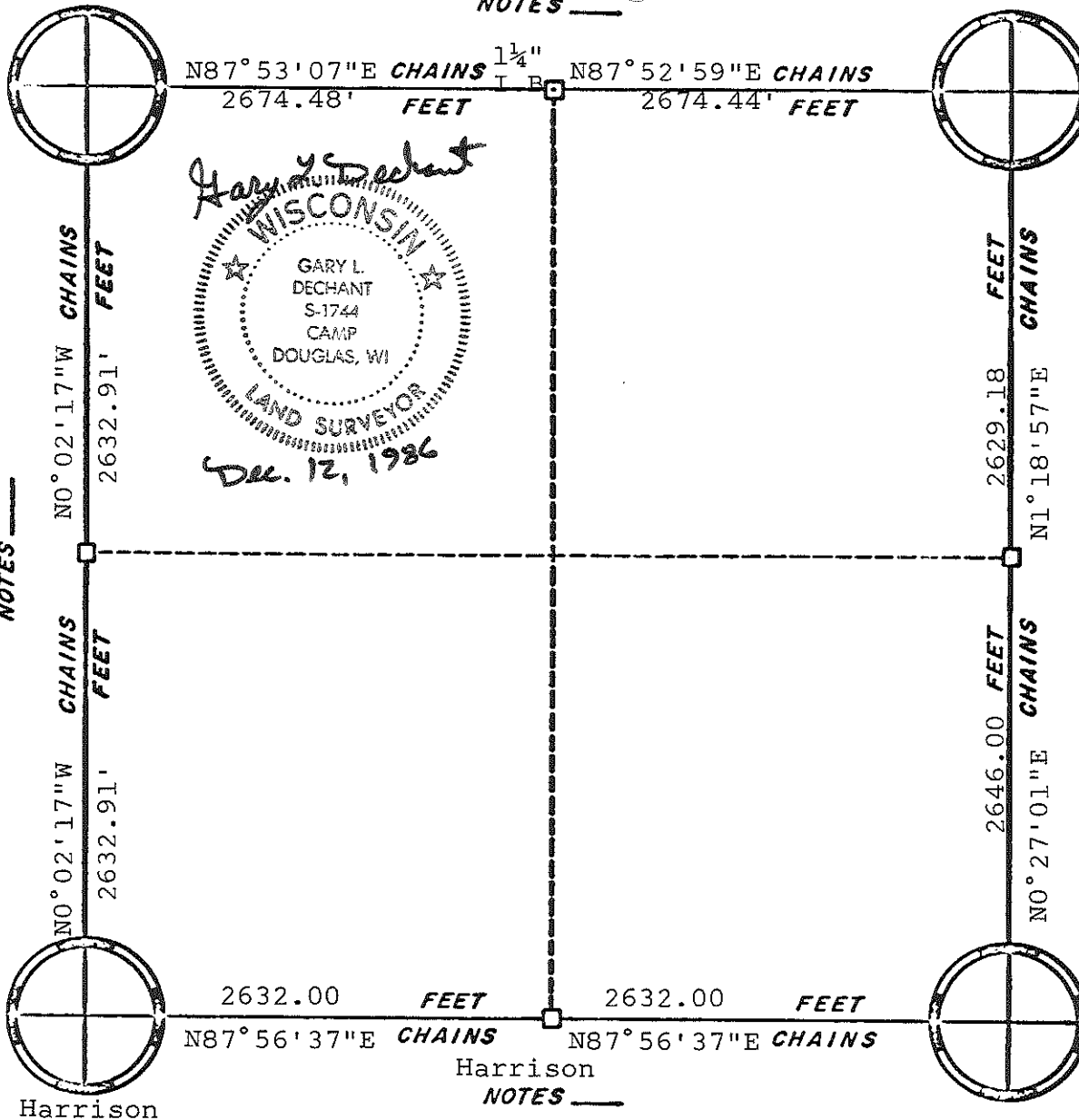
NOTES _____

Stone &
1 1/4" I. B.

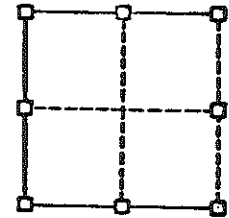
1 1/4" I. B.

3"x7'
I.P. w/
concrete

2 1/2"x7' iron pipe



CORNERS



RE-ESTABLISHED

Harrison

ORIGINAL SURVEY DATA

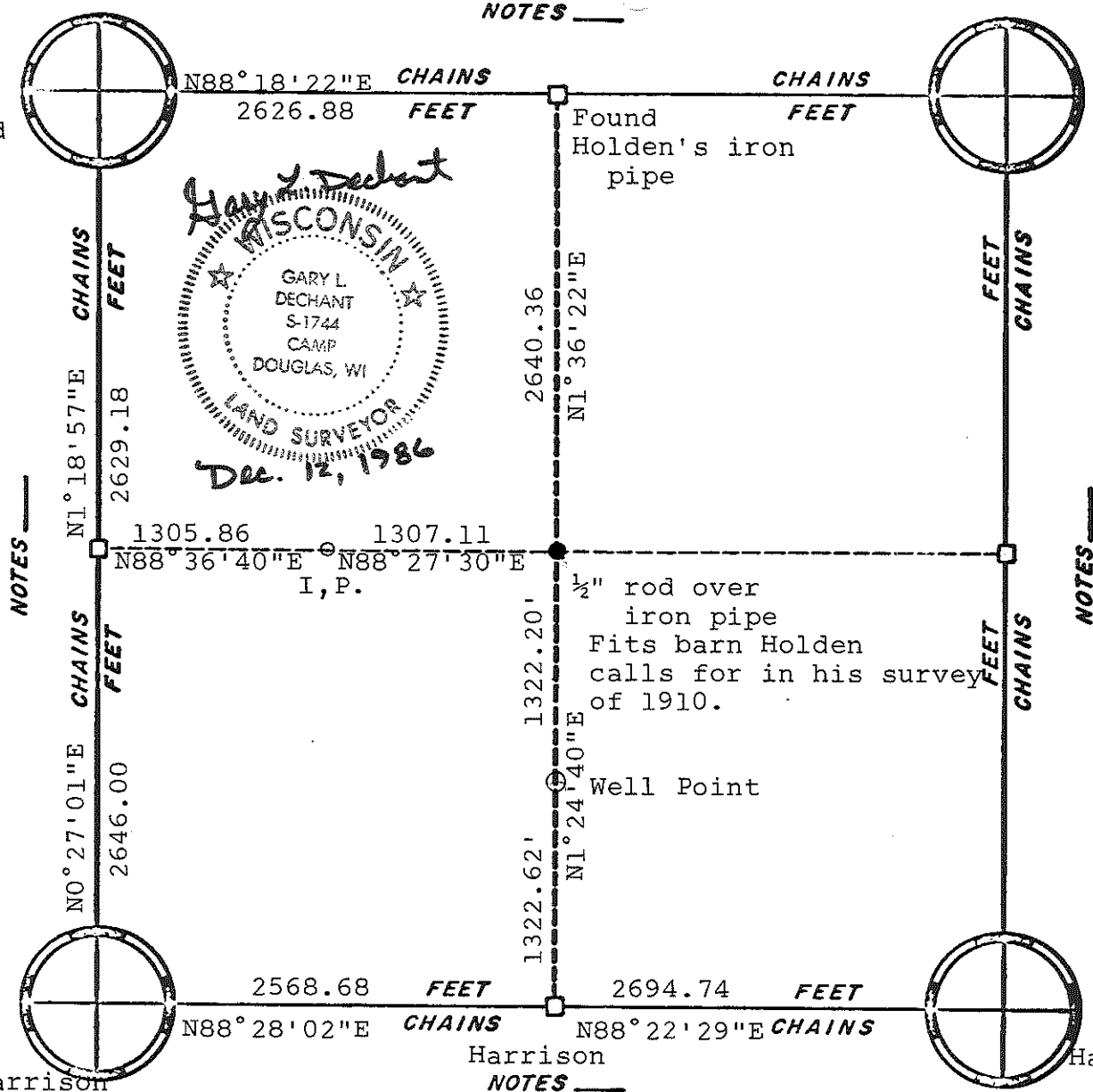
BY _____
DATE _____

SURVEYED BY G. L. Dechant	CONTRACT DATE Dec. 12, 1986	COUNTY MONROE [REDACTED]	TOWN-VILLAGE-CITY Leon	SECTION 10	TOWNSHIP 16N	RANGE 4W
------------------------------	--------------------------------	-----------------------------	---------------------------	---------------	-----------------	-------------

NOTES _____

1 1/4" round iron bar

2 1/2" x 7' I.P.



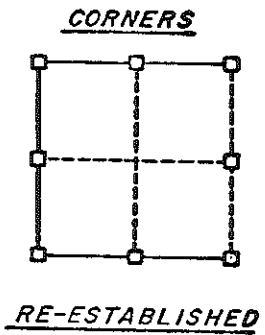
Gary L. Dechant
 WISCONSIN
 GARY L. DECHANT
 S-1744
 CAMP DOUGLAS, WI
 LAND SURVEYOR
 Dec. 12, 1986

Found Holden's iron pipe

1/2" rod over iron pipe
 Fits barn Holden calls for in his survey of 1910.

Well Point

Harrison
 NOTES _____



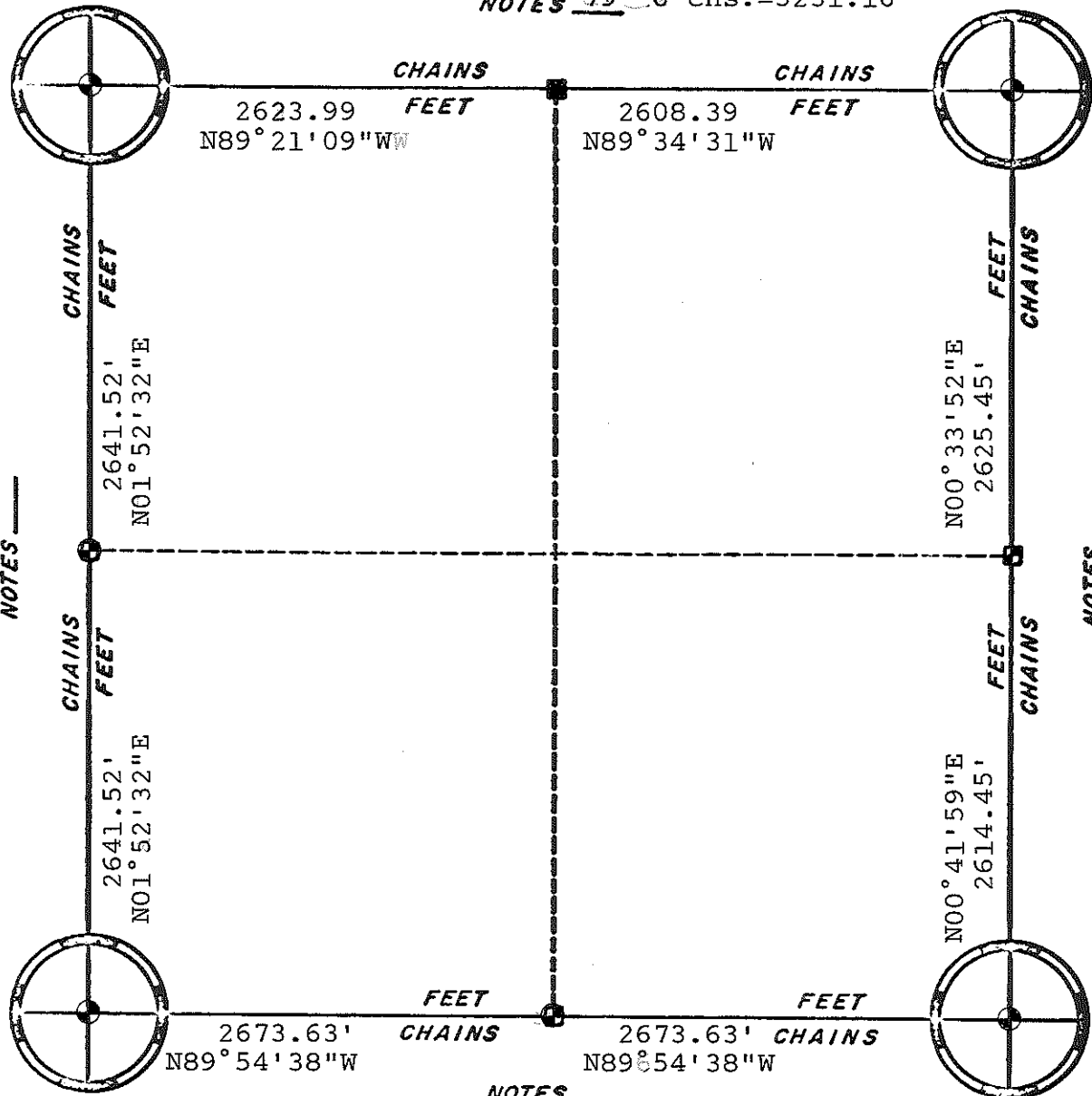
ORIGINAL SURVEY DATA

BY _____
 DATE _____

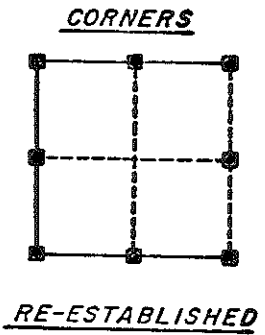
SURVEYED BY G.L. Dechant	CONTRACT DATE Dec. 12, 1986	COUNTY MONROE ██████████	TOWN-VILLAGE-CITY Leon	SECTION 11	TOWNSHIP 16N	RANGE 4W
-----------------------------	--------------------------------	-----------------------------	---------------------------	---------------	-----------------	-------------

NOTES 79 6 chs.=5231.16'

Holden- 40.10 chs.=2646.6'



Assumed Bearings



- Set Harrison Monument
- Set 1 1/4" Iron Bar

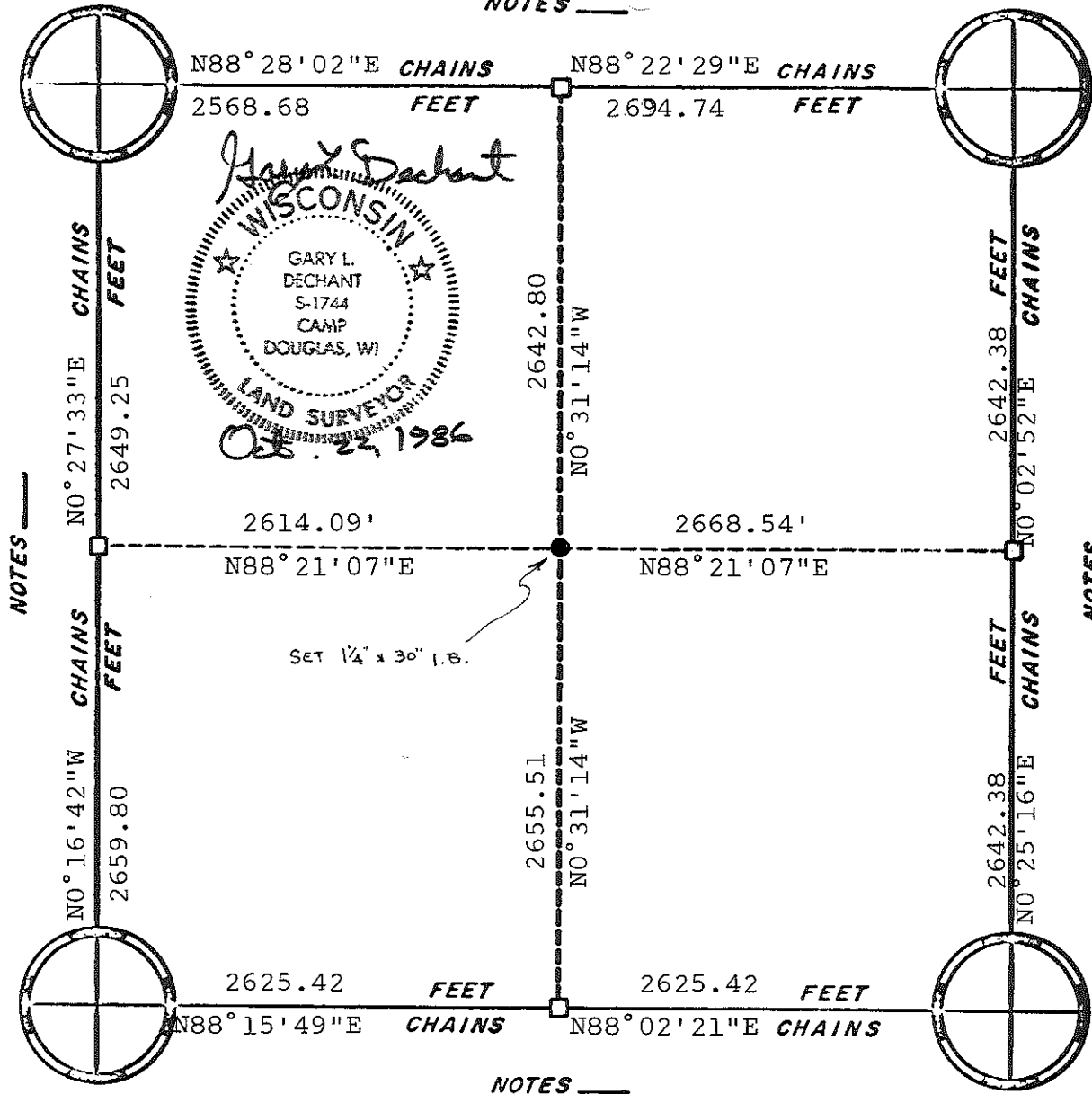
NOTES _____
80.70 chs.=5326.20'

ORIGINAL SURVEY DATA

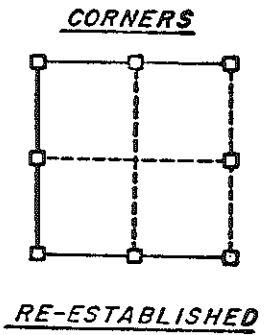
BY _____
DATE June 6, 1980

SURVEYED BY Feddersen Eng. & Surveying	CONTRACT DATE	COUNTY MONROE	TOWN-VILLAGE-CITY LEON	SECTION 12	TOWNSHIP 16 N	RANGE 4 W
--	---------------	---------------	---------------------------	---------------	------------------	--------------

NOTES _____



Gary Dechant
 WISCONSIN
 GARY L. DECHANT
 S-1744
 CAMP DOUGLAS, WI
 LAND SURVEYOR
 Oct. 22, 1986



NOTES _____

NOTES _____

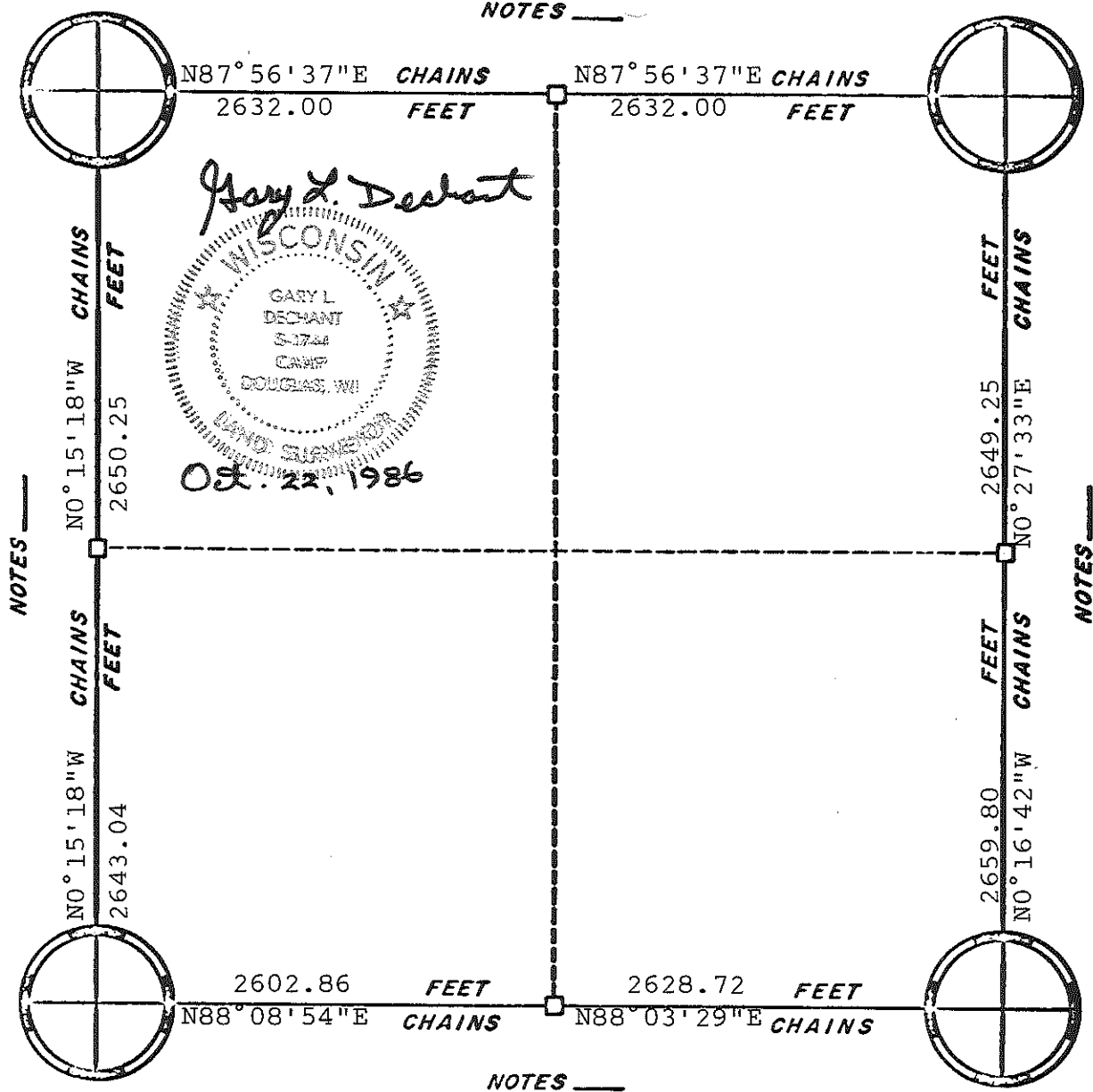
NOTES _____

ORIGINAL SURVEY DATA

BY _____
 DATE _____

SURVEYED BY G.L. Dechant	CONTRACT DATE Oct. 22, 1986	COUNTY MONROE [REDACTED]	TOWN-VILLAGE-CITY Leon	SECTION 14	TOWNSHIP 16N	RANGE 4W
-----------------------------	--------------------------------	-----------------------------	---------------------------	---------------	-----------------	-------------

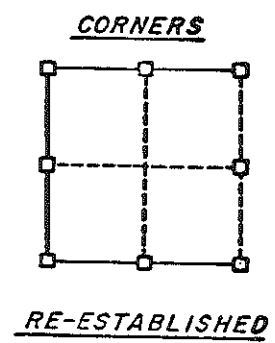
NOTES _____



NOTES _____

NOTES _____

NOTES _____

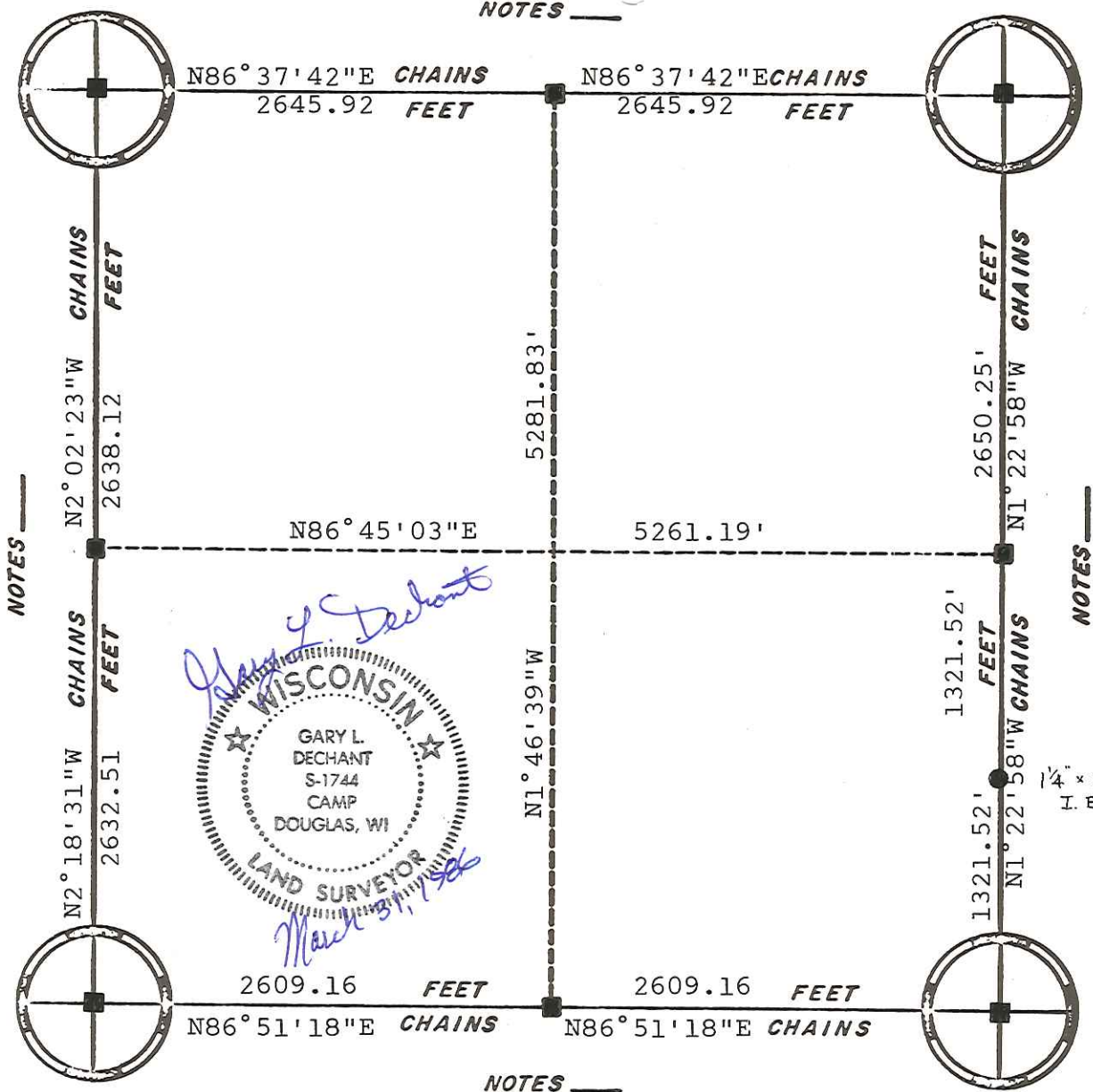


ORIGINAL SURVEY DATA

BY _____
DATE _____

SURVEYED BY	CONTRACT DATE	COUNTY	MONROE	TOWN-VILLAGE-CITY	SECTION	TOWNSHIP	RANGE
G.L. Dechant	Oct. 22, 1986			Leon	15	16N	4W

NOTES _____



Gary L. Dechant
 WISCONSIN
 GARY L. DECHANT
 S-1744
 CAMP DOUGLAS, WI
 LAND SURVEYOR
March 31, 1986

NOTES _____

CORNERS



RE-ESTABLISHED

■ = Harrison Marker

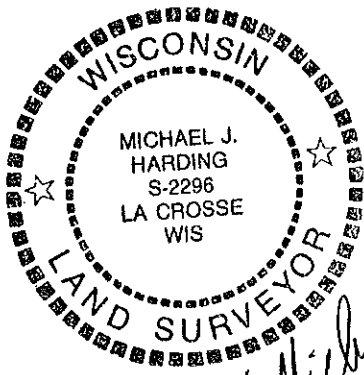
1/4" x 36" RD.
I. B.

NOTES _____

ORIGINAL SURVEY DATA

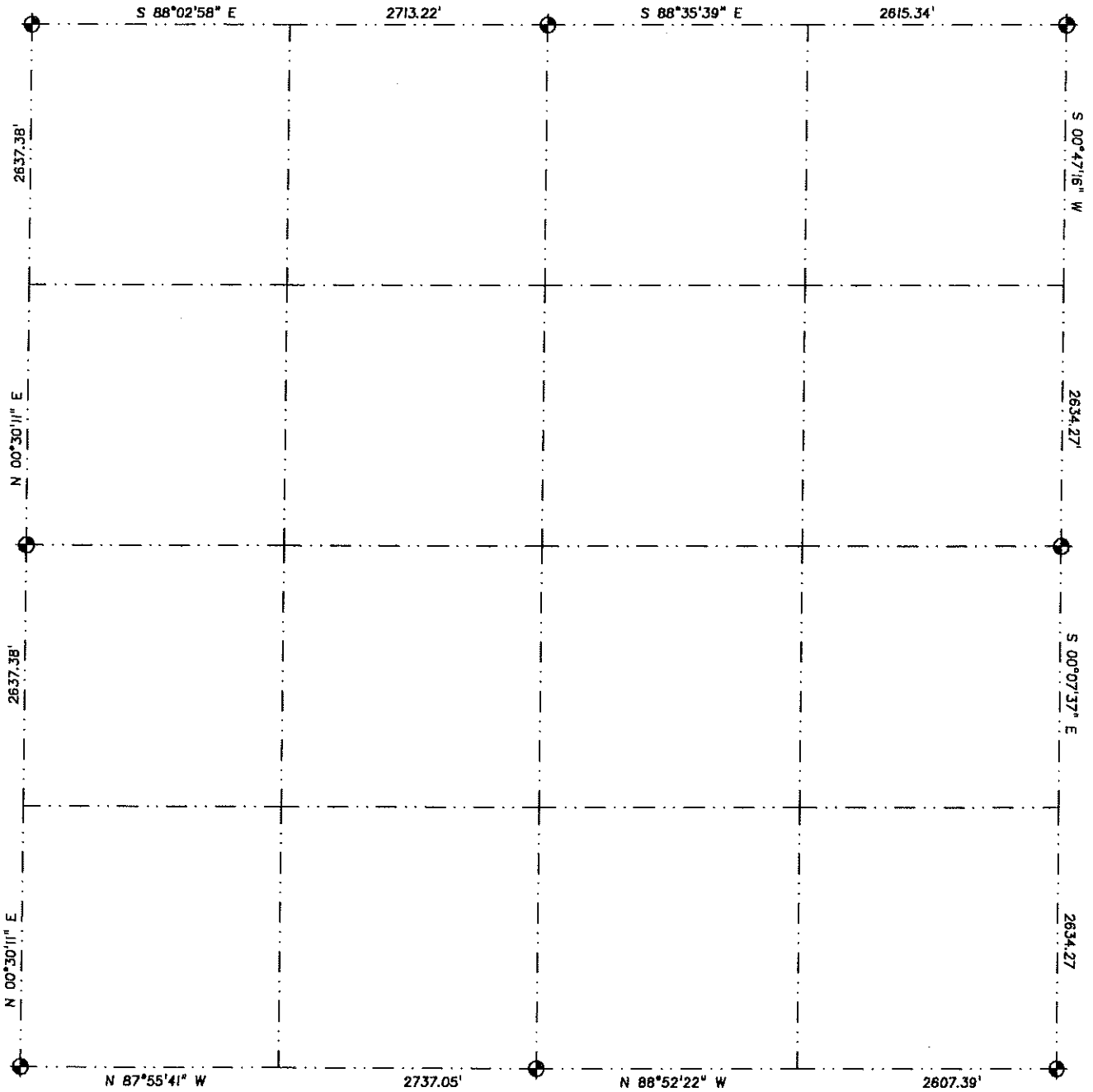
BY _____
 DATE _____

SURVEYED BY G. L. Dechant	CONTRACT DATE March 31, 1986	COUNTY MONROE ██████████	TOWN-VILLAGE-CITY Leon	SECTION 16	TOWNSHIP 16N	RANGE 4W
------------------------------	---------------------------------	-----------------------------	---------------------------	---------------	-----------------	-------------

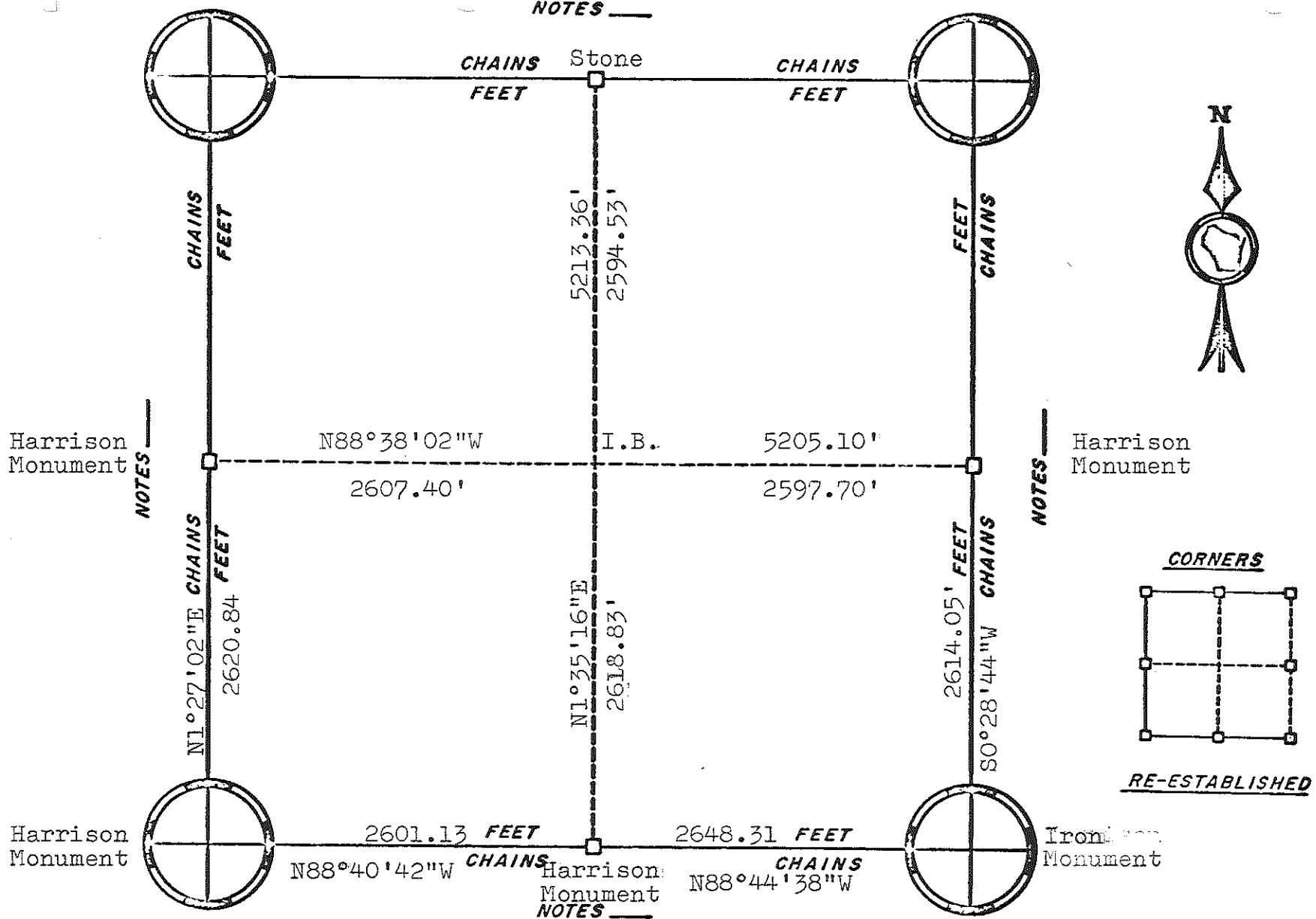


Michael J. Harding
4-21-99

SECTION 18
TOWN 16 NORTH - RANGE 4 WEST



NOTES _____

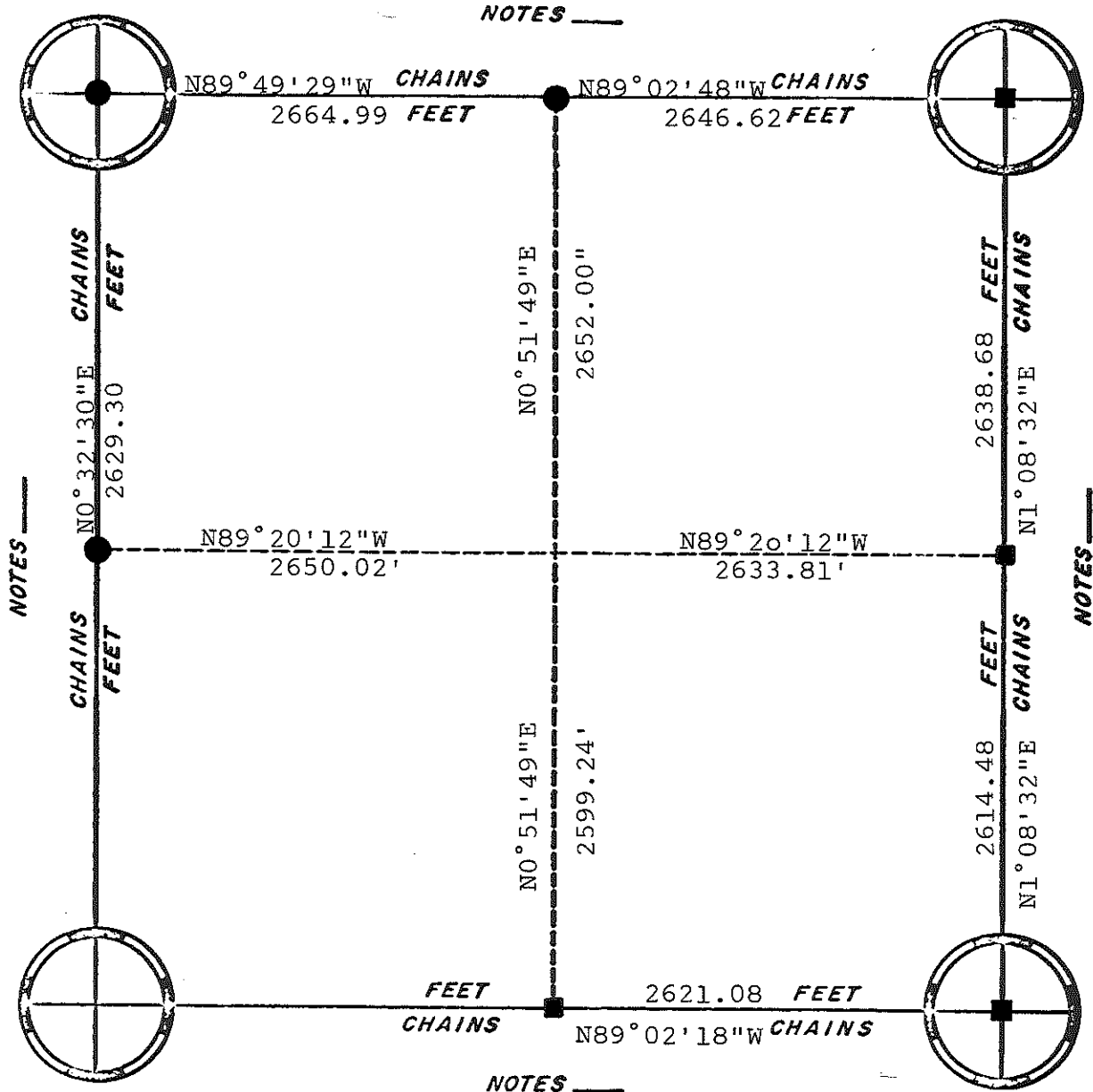


ORIGINAL SURVEY DATA

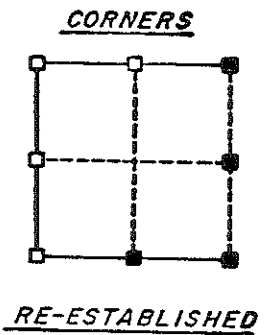
BY _____
DATE 3/19/81

SURVEYED BY G. A. Sime	CONTRACT DATE August, 1980	COUNTY MONROE	TOWN- WILLAGE CHIEF Leon	SECTION 20	TOWNSHIP T16N	RANGE R4W
---------------------------	-------------------------------	---------------	--	---------------	------------------	--------------

NOTES _____



- = Ex. Harrison
- = Set Harrison



NOTES _____

NOTES _____

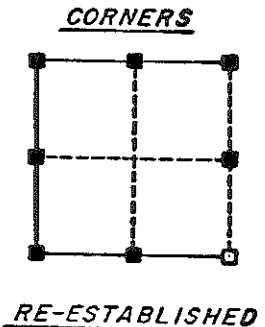
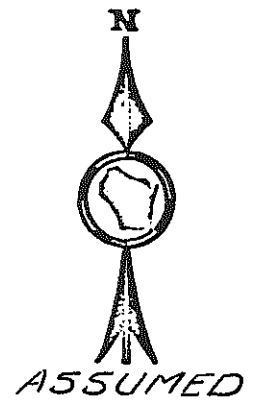
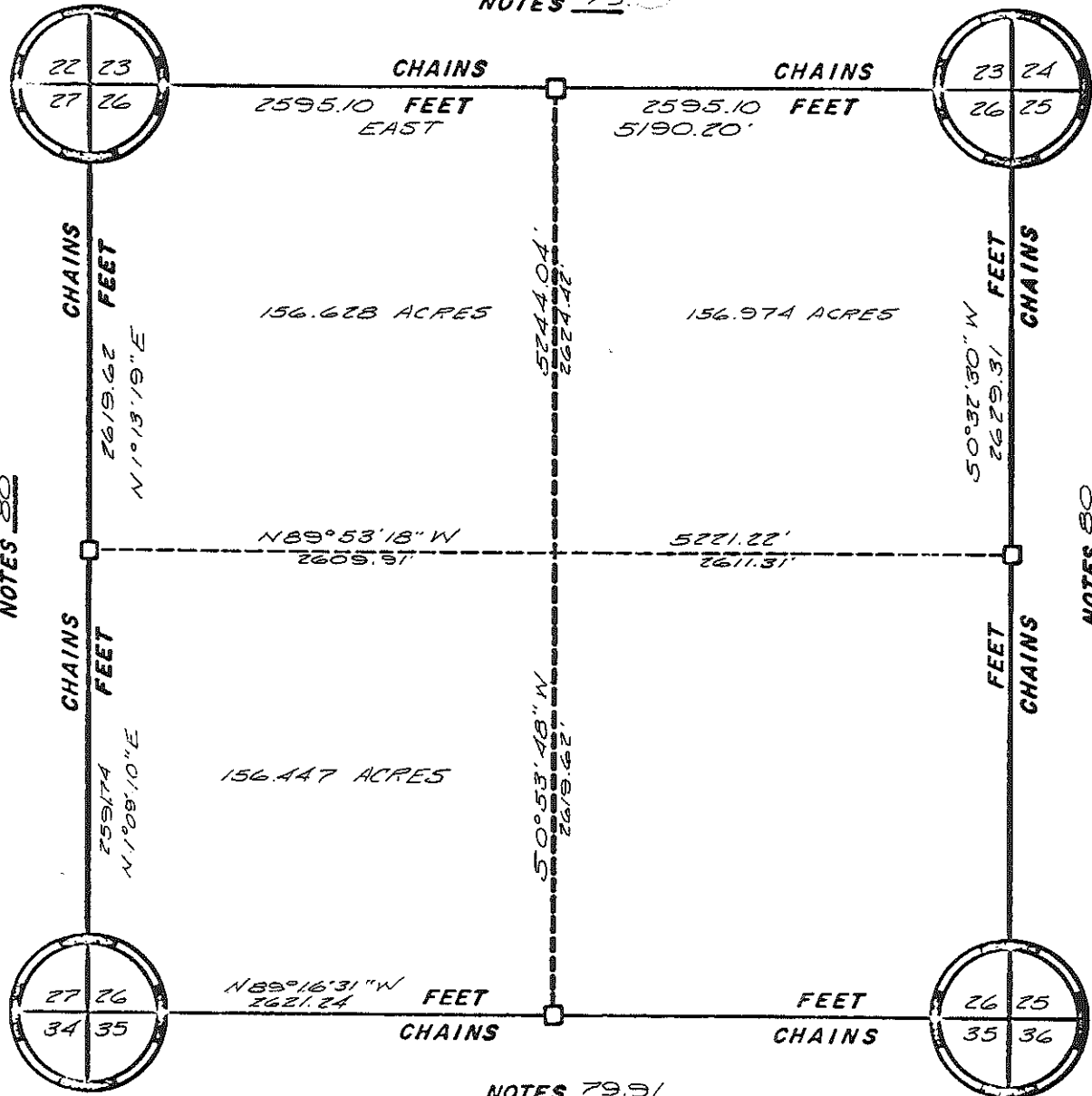
NOTES _____

ORIGINAL SURVEY DATA

BY _____
DATE _____

SURVEYED BY L. Feddersen	CONTRACT DATE Dec. 13, 1982	COUNTY MONROE	TOWN-VILLAGE-CITY Leon	SECTION 25	TOWNSHIP 16N	RANGE 4W
-----------------------------	--------------------------------	------------------	---------------------------	---------------	-----------------	-------------

NOTES 79



NOTES 80

NOTES 80

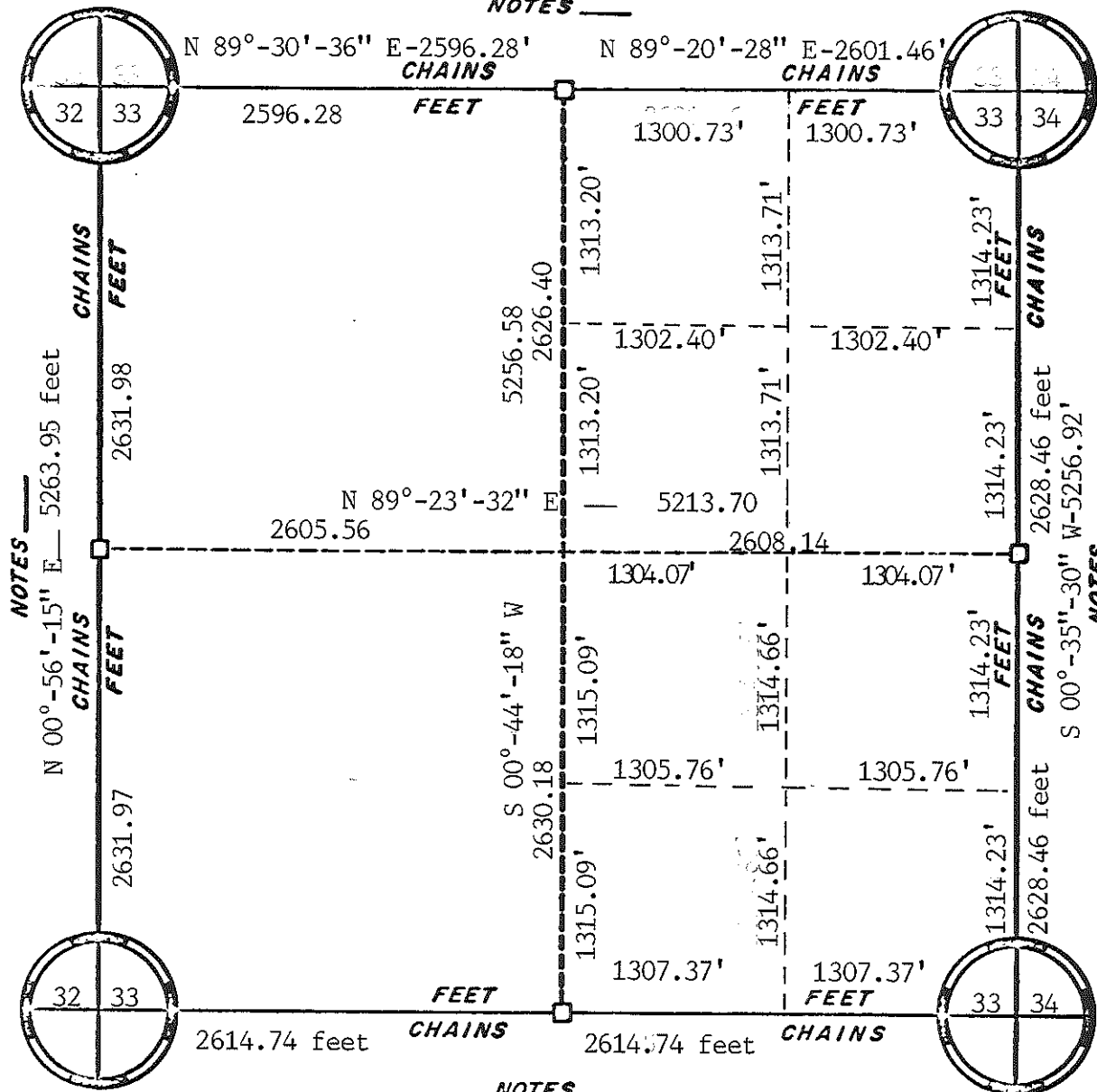
NOTES 79.91

ORIGINAL SURVEY DATA

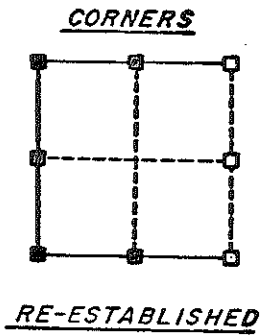
BY _____
DATE 9-15-77

SURVEYED BY ROBERT LAMPMAN 5-1296	CONTRACT DATE	COUNTY MONROE	TOWN-VILLAGE-CITY LEON	SECTION 26	TOWNSHIP 16	RANGE 4
---	---------------	---------------	---------------------------	---------------	----------------	------------

NOTES _____



Bearings referenced to the East line of Section 33 recorded as bearing: N 00°-35'030" E, astronomic north



NOTES _____

S 89°-21'-28" W- 5229.48 feet

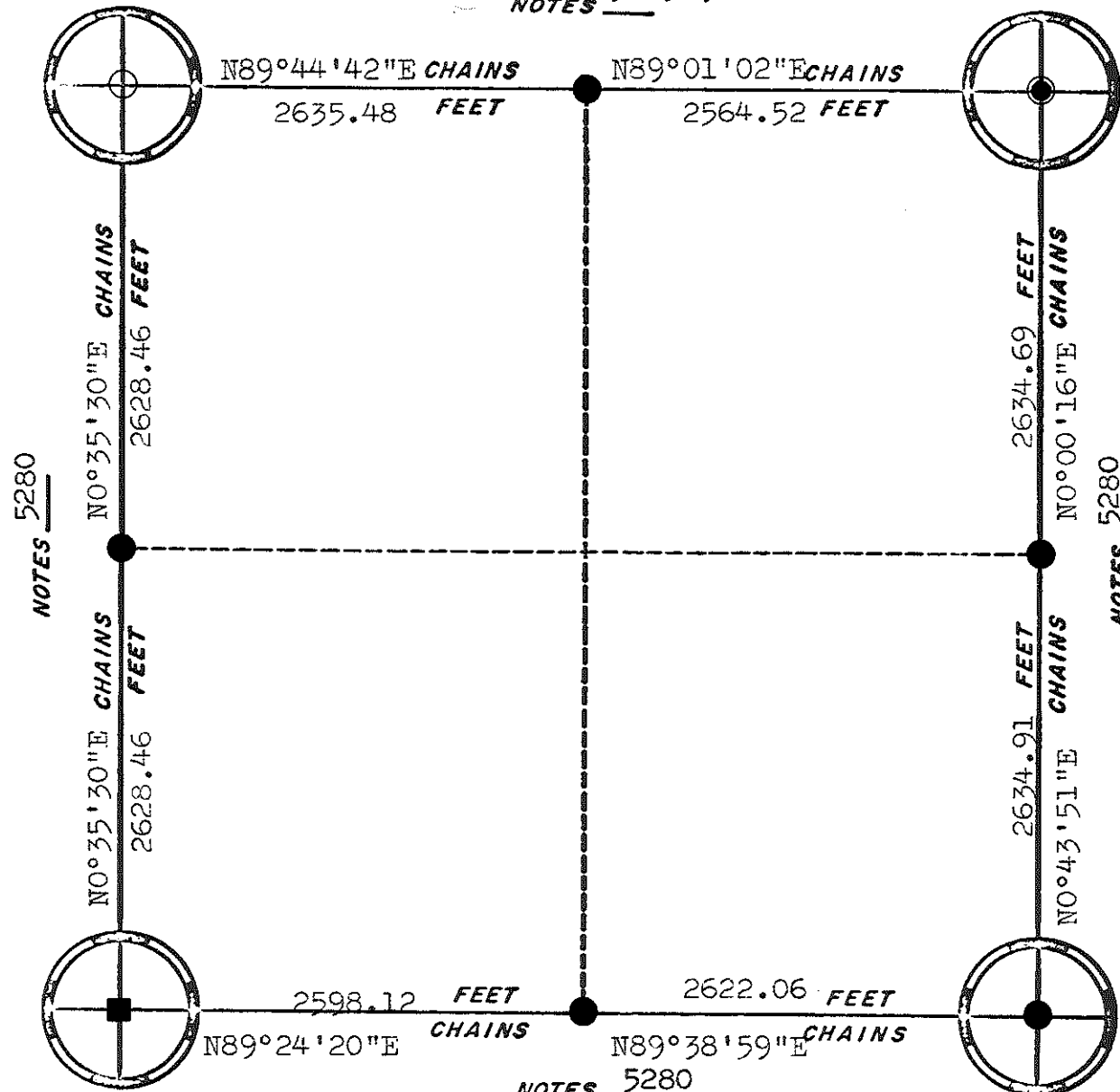
ORIGINAL SURVEY DATA

BY _____

DATE Aug. 15, 1984

SURVEYED BY Rnald Parish	CONTRACT DATE	COUNTY MONROE	TOWN-VILLAGE-CITY LEON	SECTION 33	TOWNSHIP 16 N.	RANGE R. 4 W.
-----------------------------	---------------	---------------	---------------------------	---------------	-------------------	------------------

NOTES 5283.96



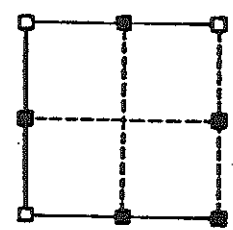
NOTES 5280

NOTES 5280



- = Ex. Harrison
- = Set Harrison
- = Ex. Stone
- = Ex. 1/4" iron bar

CORNERS



RE-ESTABLISHED

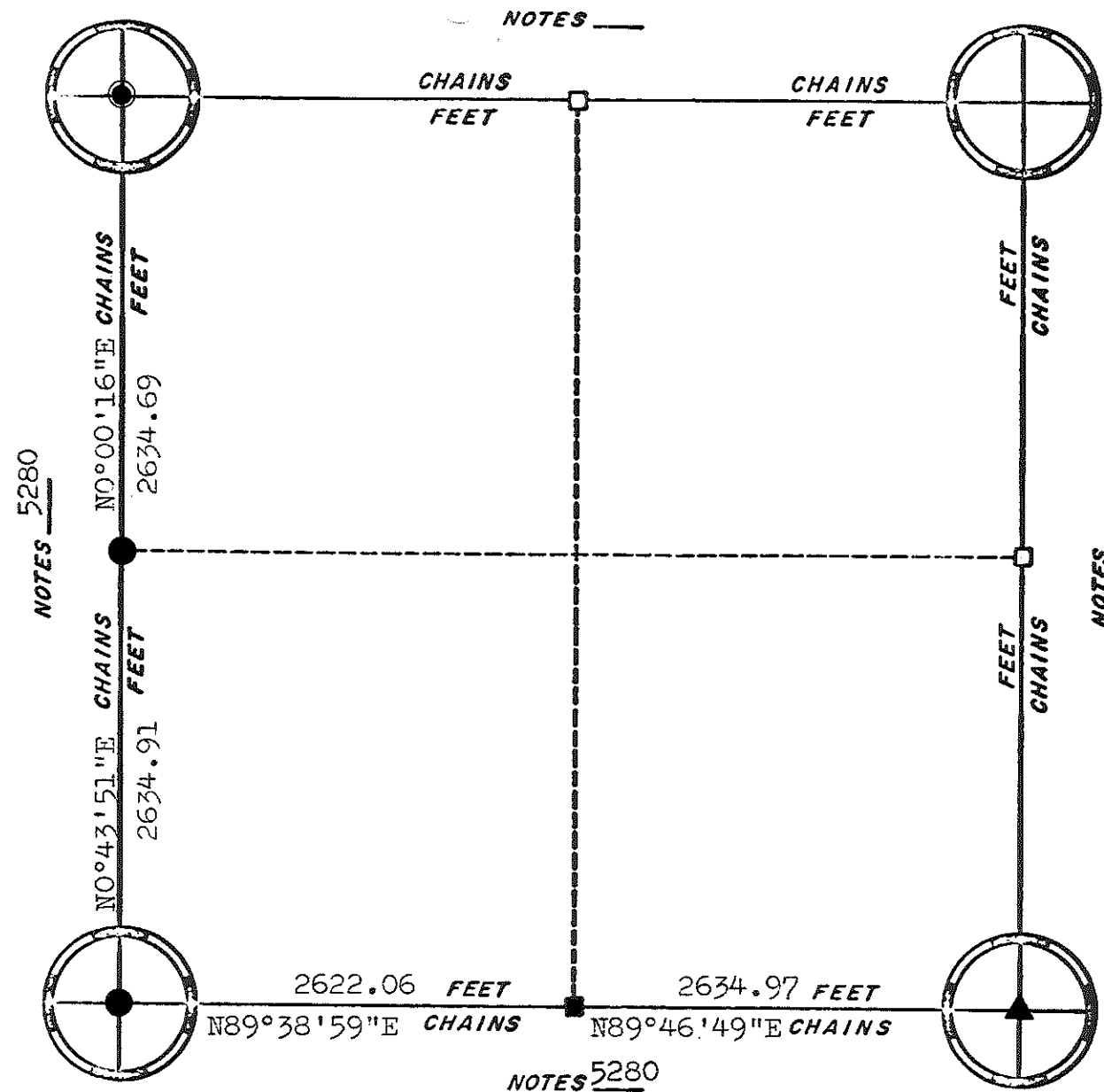
NOTES 5280

(Compiled by County Surveyor's Office) *asej*

ORIGINAL SURVEY DATA

BY _____
DATE 2/17/82

SURVEYED BY G. Hofmeister	CONTRACT DATE Dec. 9, 1981	COUNTY MONROE ██████████	TOWN-VILLAGE-CITY Leon	SECTION 34	TOWNSHIP 16N	RANGE 4W
------------------------------	-------------------------------	-----------------------------	---------------------------	---------------	-----------------	-------------



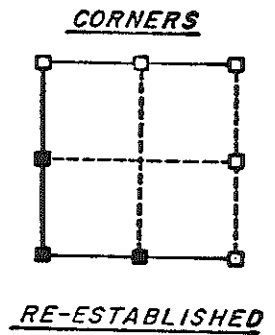
NOTES _____

NOTES 5280

NOTES _____



- ⊙ = Ex. Harrison
- = Set Harrison
- = Set 1" iron pipe
- ▲ = Set 12" spike



NOTES 5280

(Compiled by County Surveyor's Office) *ahj*

ORIGINAL SURVEY DATA

BY

DATE 2/17/82

SURVEYED BY G. Hofmeister	CONTRACT DATE Dec. 9, 1981	COUNTY MONROE [REDACTED]	TOWN-VILLAGE-CITY Leon	SECTION 35	TOWNSHIP 16N	RANGE 4W
------------------------------	-------------------------------	-----------------------------	---------------------------	---------------	-----------------	-------------