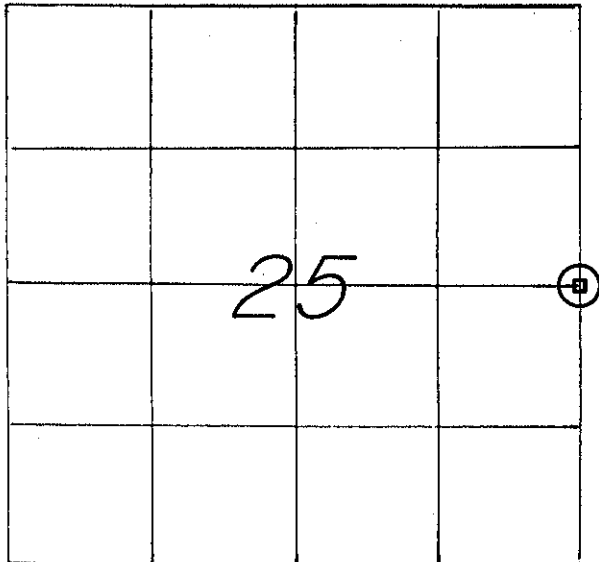


21605252000

U. S. PUBLIC LAND SURVEY MONUMENT RECORD

SECTION 25 T 16 N, R 5 W, TOWN OF BANGOR

LA CROSSE COUNTY



LOCATION OF LANDMARK

CREW: WILLIAM C. JUNG
 PETER F. FOLLANSBEE
 DATE: 10/27/2000.

WISCONSIN COORDINATE SYSTEM	
North	669,899.155
East	1,728,171.326
Theta Angle	
Horiz. Order	
Vert. Order	
DATUM:	83('91)
TYPE OF LANDMARK	
18" ROUNDHEAD BOLT.	
BEARINGS ARE REFERENCED TO	
GRID NORTH AS PER SECTION DATA.	

Describe any record evidence, monument evidence, testimonial evidence or any other material evidence you considered and whether the monument was found or restored through acceptance of an obliterated evidence location.

I set this corner on line between the section corners and on line with the old line fence to the West. After reviewing the field evidence including the "40" fences to the North and South, our section data, and the original government notes, I feel that this is the best way to set this corner. The 1/2 mile to the North is short, and the 1/2 mile to the South is long, but the latter is almost equal to the long 1/2 mile along the East line of the NE1/4 of Section 36.

Describe or show any material discrepancy between the location of the restored corner and that of the corner previously restored or reestablished.

Dick Berg shows this corner to be in the centerline of the road in his 1977 survey. I do not agree with this location.

W114 Sec. 30
 T16N-R4W
 97

RECORD OF DURABLE WITNESS MONUMENTS
MAGNETIC

NO	DESCRIPTION	BEARING	DISTANCE
1	EX. 1" I.P. SURVEY POINT ON TOP OF DITCH BACKSLOPE (replaces Berg's bent pipe)	WEST ±	5.48 FT.
2	SET A R.K. NAIL IN W.-SIDE OF A SMALL APPLE TREE	N 09° W	55.79 FT.
3	SET A R.K. NAIL IN S.-SIDE OF A POWER POLE	N 59° E	46.80 FT.
4	EX. 1" I.P. SURVEY POINT BURIED IN GRAVEL ROAD (our)	EAST ±	19.29 FT.

(NOT TO SCALE)

(NOTE: THE TWO BEARING TREES ARE UNBLAZED.)

E. 1/4 - COR., SEC. 25 - 16 - 5.
SET AN 18" ROUNDHEAD BOLT ON LINE WITH IRON PIPE SURVEY POINTS. VARIOUS UNDERGROUND UTILITY LINES IN THE AREA.

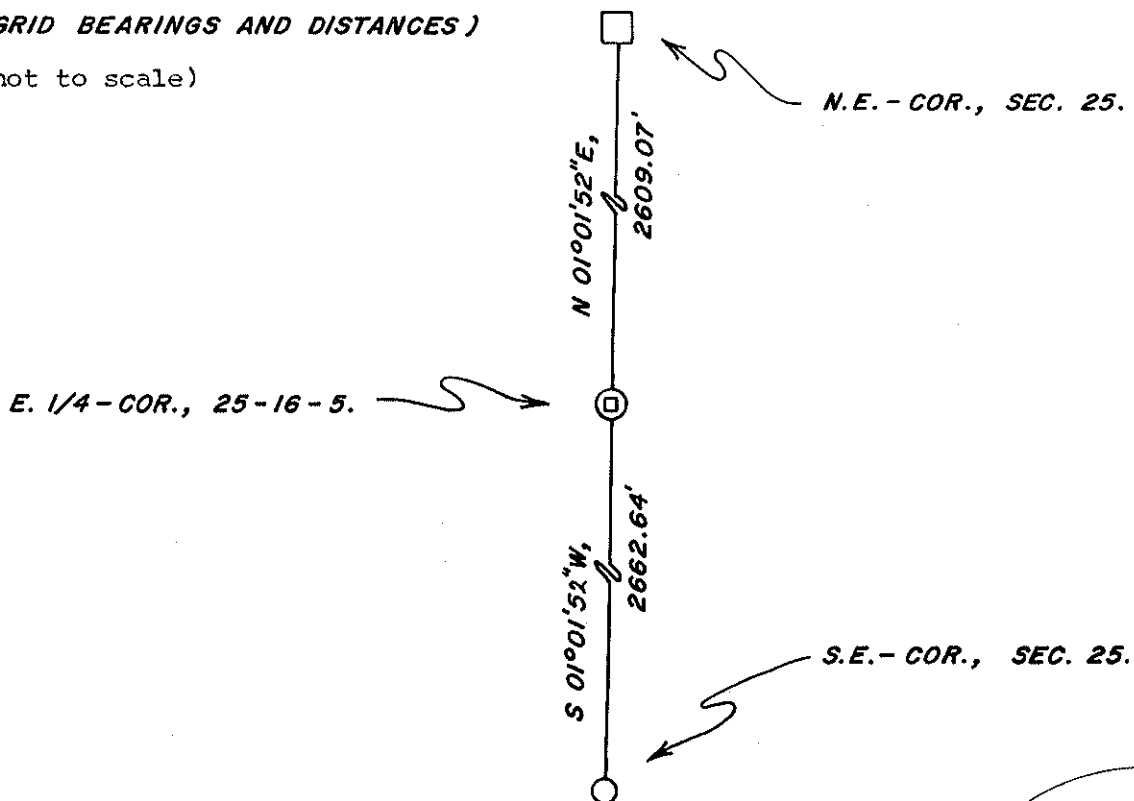
SET A NAIL IN THE ROOT EXTENDING EASTERLY FROM A CLUSTER OF MAPLE TREES. SET VERTICAL. (S 88° W, 39.93')

PLAN VIEW DRAWING OF REFERENCE TIES

MAP SHOWING DISTANCE AND DIRECTION TO OTHER PUBLIC LAND SURVEY CORNERS USED FOR REESTABLISHING THE CORNER

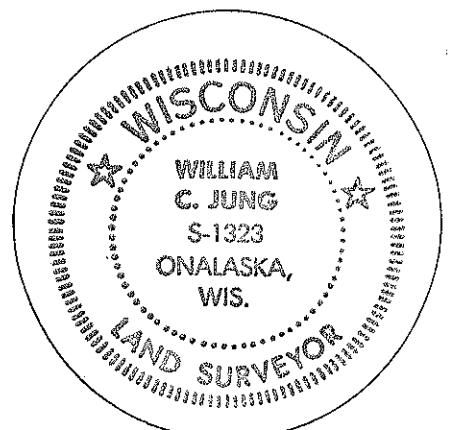
(GRID BEARINGS AND DISTANCES)

(not to scale)



I, WILLIAM C. JUNG, COUNTY SURVEYOR
HEREBY CERTIFY THAT THE CORNER LOCATION SHOWN ON THIS RECORD WAS DETERMINED BY ME OR UNDER MY DIRECTION AND CONTROL AND THAT THIS U. S. PUBLIC LAND SURVEY MONUMENT RECORD IS CORRECT AND COMPLETE TO THE BEST OF MY KNOWLEDGE AND BELIEF.

William C. Jung 11/17/00
Signature Date



Seal