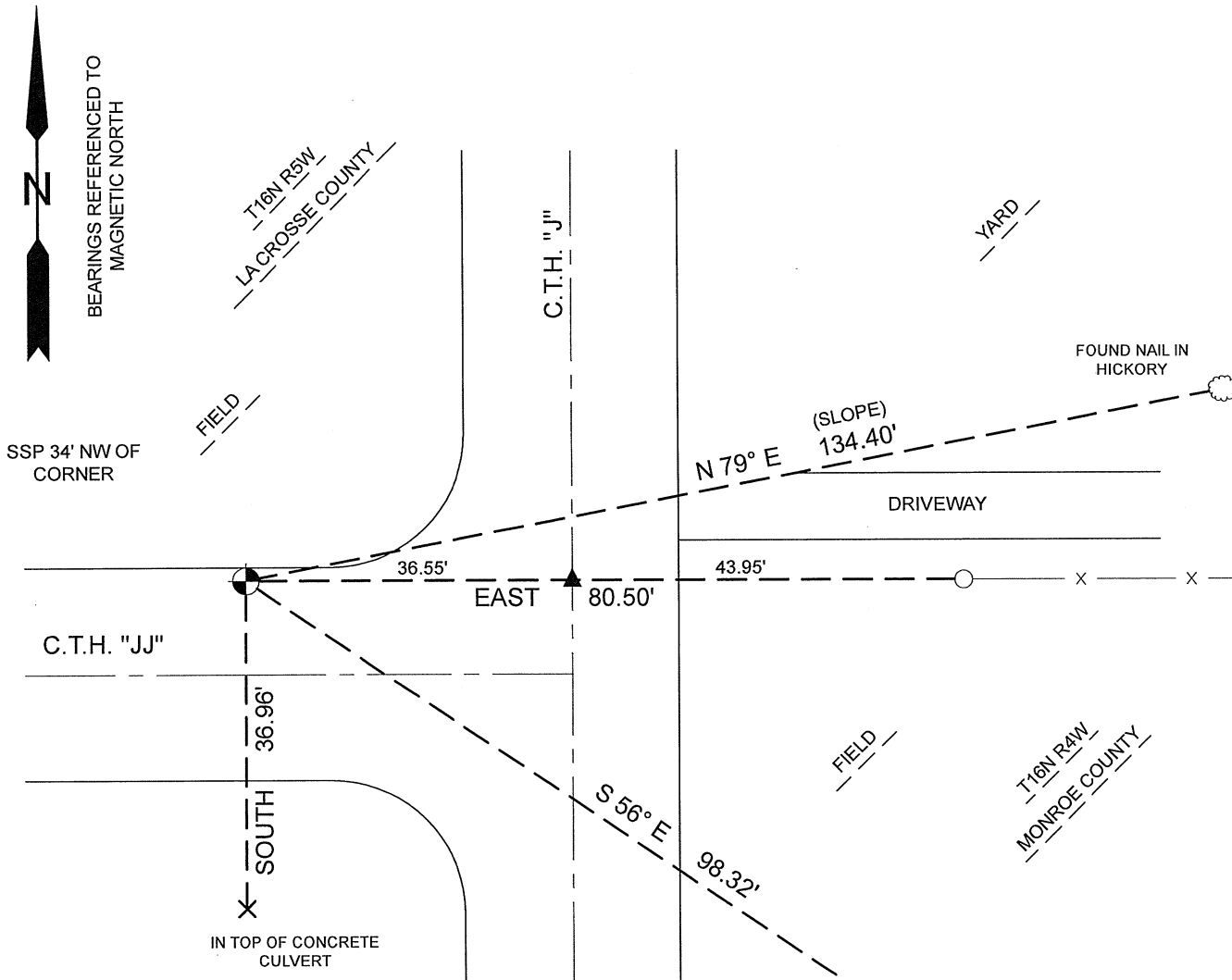
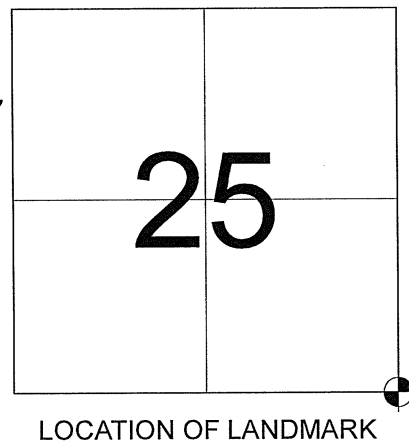


MAINTENANCE- PUBLIC LAND SURVEY MONUMENT RECORD 2010-38
 TIE SHEET UPDATE-21605250000 (LA CROSSE COUNTY INDEX 131D)

Pete Follansbee and I performed maintenance work on this corner on June 25, 2010. We found the 3/4" Iron bar with aluminum cap of record at the corner. We found 2 of W. Jung's ties and established 2 new ties as shown below.



LEGEND

- 3/4" IRON BAR WITH ALUMINUM CAP
- TREE AS DESCRIBED
- FOUND "X"
- FOUND P.K. NAIL
- SET 3/4"X30" IRON BAR WITH PLASTIC CAP (1.50lbs/ft)



Bryan H. Meyer
 Bryan H. Meyer
 La Crosse County Surveyor

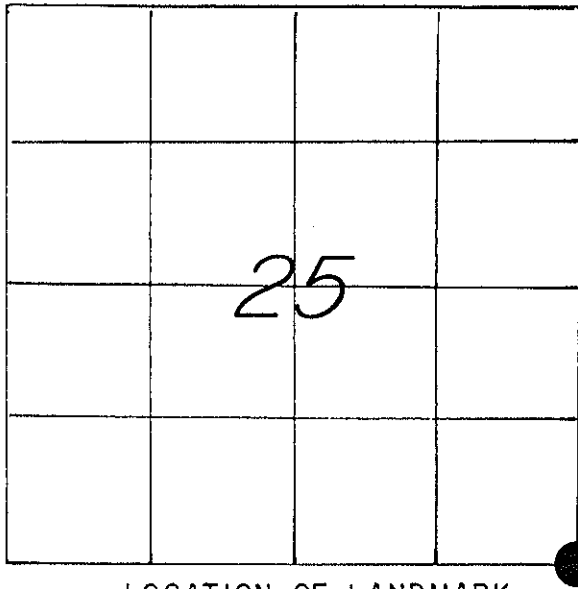
6/30/2010
 Date

CORNER ID:
 21605250000

21605250000

U. S. PUBLIC LAND SURVEY MONUMENT RECORD

SECTION 25 T 16 N, R 5 W, TOWN OF BANGOR
 LA CROSSE COUNTY



WISCONSIN COORDINATE SYSTEM	
North	667,236.946
East	1,728,123.428
Theta Angle	
Horiz. Order	
Vert. Order	
DATUM:	83('91)
TYPE OF LANDMARK	
3/4" x 30" IRON BAR.	
BEARINGS ARE REFERENCED TO	
GRID NORTH AS PER SECTION DATA.	

LOCATION OF LANDMARK

CREW: WILLIAM C. JUNG
 PETER F. FOLLANSBEE
 DATE: 10/10/2000

Describe any record evidence, monument evidence, testimonial evidence or any other material evidence you considered and whether the monument was found or restored through acceptance of an obliterated evidence location.

I set this corner on line between the NE of Section 25 and the E1/4 of Section 36 and also on line with the old line fence to the East. After surveying the County line, the sections to the West, and analyzing this data, this was in my opinion the best way to set this corner. To the South my distance fits the original government retracement distance within 9 inches.

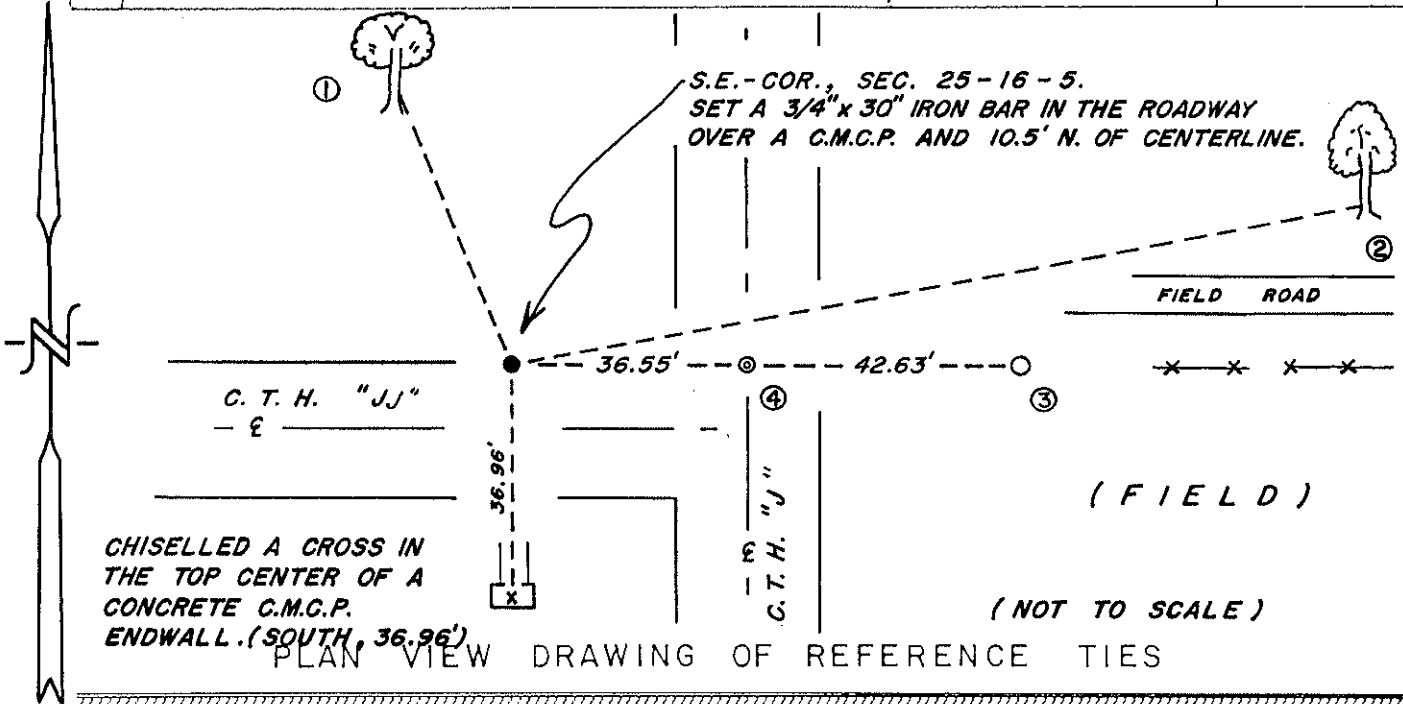
Describe or show any material discrepancy between the location of the restored corner and that of the corner previously restored or reestablished.

NONE KNOWN.

SW Sec. 30
 T16N-R4W
 1/3

RECORD OF DURABLE WITNESS MONUMENTS
MAGNETIC

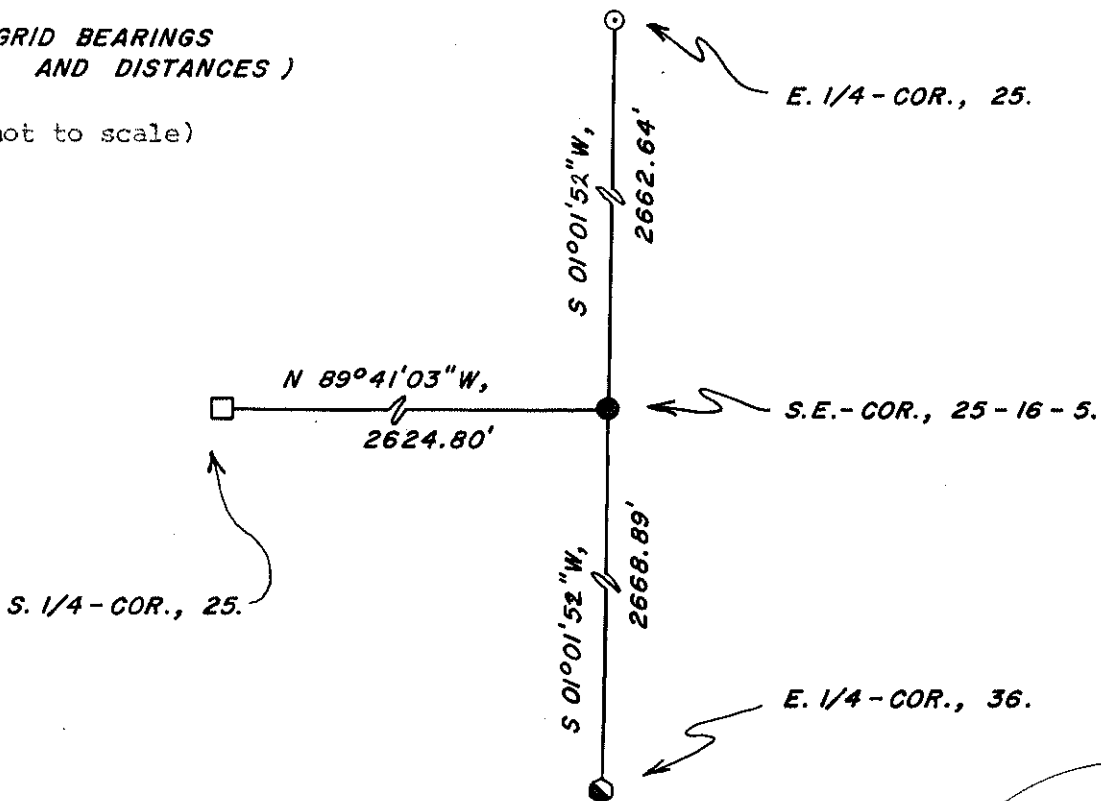
NO	DESCRIPTION	BEARING	DISTANCE
1	SET A NAIL IN S.W.-SIDE OF A 14" OAK (UNBLAZED)	N 22° W	46.03 FT.
2	SET A NAIL IN S.-SIDE OF A 16" HICKORY (UNBLAZED)	N 79° E	SL. = 134.40'
3	SET A 1-1/4" IRON PIPE ON LINE WITH FENCE	EAST ±	79.18 FT.
4	P.K. NAIL SURVEY POINT IN CENTERLINE C.T.H. "J"	EAST ±	36.55 FT.



MAP SHOWING DISTANCE AND DIRECTION TO OTHER PUBLIC LAND SURVEY CORNERS USED FOR REESTABLISHING THE CORNER

(GRID BEARINGS AND DISTANCES)

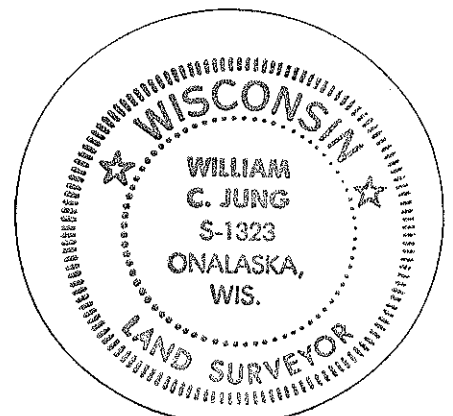
(not to scale)



I, WILLIAM C. JUNG, COUNTY SURVEYOR
HEREBY CERTIFY THAT THE CORNER LOCATION SHOWN ON THIS RECORD WAS DETERMINED BY ME OR UNDER MY DIRECTION AND CONTROL AND THAT THIS U. S. PUBLIC LAND SURVEY MONUMENT RECORD IS CORRECT AND COMPLETE TO THE BEST OF MY KNOWLEDGE AND BELIEF.

William C. Jung
Signature

11/16/00
Date



Seal