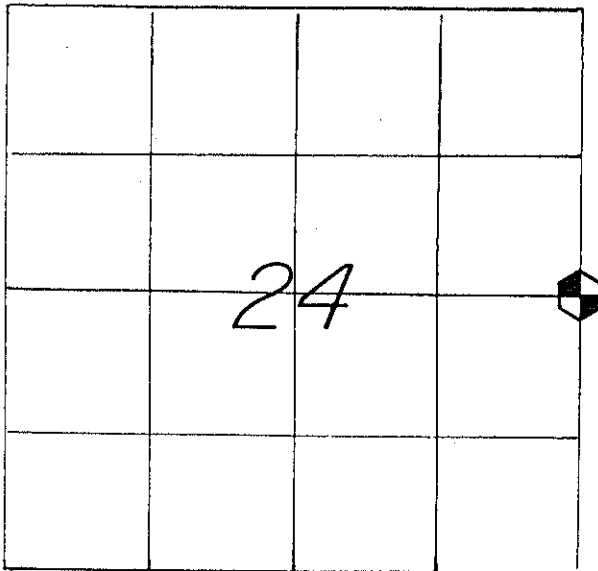


21605242000

U. S. PUBLIC LAND SURVEY MONUMENT RECORD

SECTION 24 T 16 N, R 5 W, TOWN OF BANGOR

LA CROSSE COUNTY



LOCATION OF LANDMARK

CREW: *WILLIAM C. JUNG*
PETER F. FOLLANSBEE
 DATE: *10/10/2000*

WISCONSIN COORDINATE SYSTEM

North *675,144.578*East *1,728,263.549*

Theta Angle

Horiz. Order

Vert. Order

DATUM: *83('91)*

TYPE OF LANDMARK

BRASS CAP LUNDE MARKER.

BEARINGS ARE REFERENCED TO
 GRID NORTH AS PER SECTION DATA.

Describe any record evidence, monument evidence, testimonial evidence or any other material evidence you considered and whether the monument was found or restored through acceptance of an obliterated evidence location.

I set this corner by single proportionate measurement and monumented it with a brass capped Lunde marker. We searched at great length for Bliss's stone but could not find it. Bryan Meyer and Rodney Maxwell had both been at this corner. They too could not find the stone. Clarence Olson, whose home farm was to the Southeast, told me that he saw the stone knocked over about 40 years ago. A lot of logging had been done in this area. I believe that any evidence of the stone was destroyed during logging operations. Describe or show any material discrepancy between the location of the restored corner and that of the corner previously restored or reestablished.

NONE KNOWN.

W14 Sec 19
 T16N-R5W

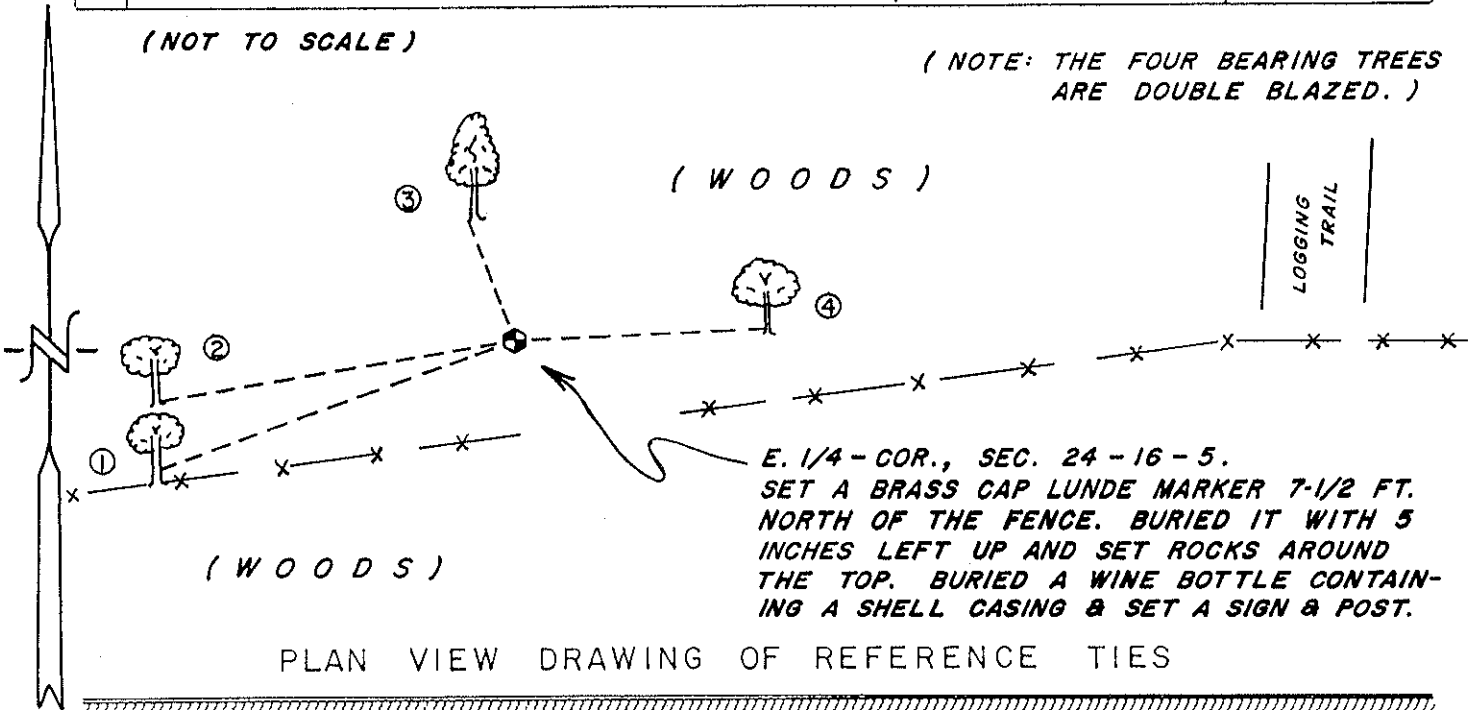
74

RECORD OF DURABLE WITNESS MONUMENTS
MAGNETIC

NO	DESCRIPTION	BEARING	DISTANCE
1	SET A NAIL IN N.-SIDE OF A 10" WHITE OAK	S 70° W	29.04 FT.
2	SET A NAIL IN S.-SIDE OF AN 8-1/4" WHITE OAK	S 80° W	27.77 FT.
3	SET A NAIL IN W.-SIDE OF A 7" MAPLE	N 20° W	10.01 FT.
4	SET A NAIL IN S.-SIDE OF A 6-1/2" WHITE OAK	N 87° E	19.47 FT.

(NOT TO SCALE)

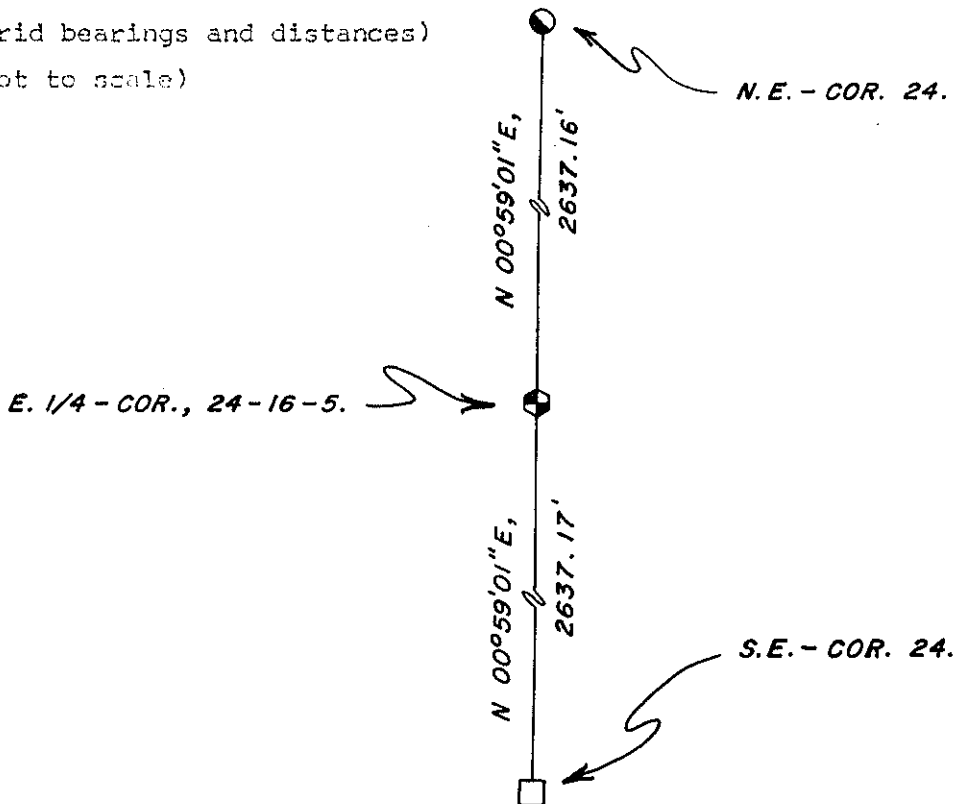
(NOTE: THE FOUR BEARING TREES ARE DOUBLE BLAZED.)



E. 1/4 - COR., SEC. 24 - 16 - 5.
SET A BRASS CAP LUNDE MARKER 7-1/2 FT. NORTH OF THE FENCE. BURIED IT WITH 5 INCHES LEFT UP AND SET ROCKS AROUND THE TOP. BURIED A WINE BOTTLE CONTAINING A SHELL CASING & SET A SIGN & POST.

MAP SHOWING DISTANCE AND DIRECTION TO OTHER PUBLIC LAND SURVEY CORNERS USED FOR REESTABLISHING THE CORNER

(grid bearings and distances)
(not to scale)



I, WILLIAM C. JUNG, COUNTY SURVEYOR
HEREBY CERTIFY THAT THE CORNER LOCATION SHOWN ON THIS RECORD WAS DETERMINED BY ME OR UNDER MY DIRECTION AND CONTROL AND THAT THIS U. S. PUBLIC LAND SURVEY MONUMENT RECORD IS CORRECT AND COMPLETE TO THE BEST OF MY KNOWLEDGE AND BELIEF.

William C. Jung 11/17/00
Signature Date



Seal