

21605240000

I, Bryan H. Meyer, do hereby certify that on the 27th day of July 19 84, I found (evidence) [redacted] of the Southwest corner of Section 19, T 16 N, R 4 W Fourth Principal Meridian, and I re-established said corner according to the Wisconsin Statutes as shown and described hereon.

Dated this 15th day of Oct. 19 84.

Bryan H. Meyer

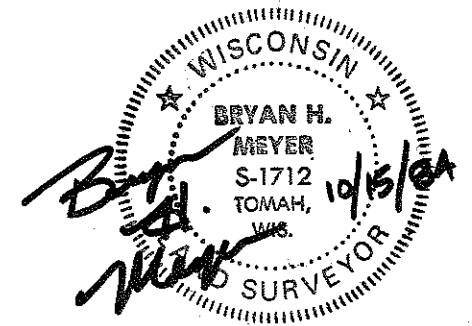
Deputy County Surveyor
Title

History of corner establishment since Original Government Survey

Henry L Bliss, County Surveyor of Lacrosse County surveyed the entire Township of Bangor and set monuments at each Section and Quarter corner in 1867.

Description of corner evidence found:

I found a 6"x6" cut stone leaning badly at a two way fence corner. I spoke to Mr. Herbert Olson, a local land owner, and he told me the stone had been at this location for as long as he could remember. I therefore accepted the stone as the corner.



COUNTY SURVEYOR FORM NO. 1

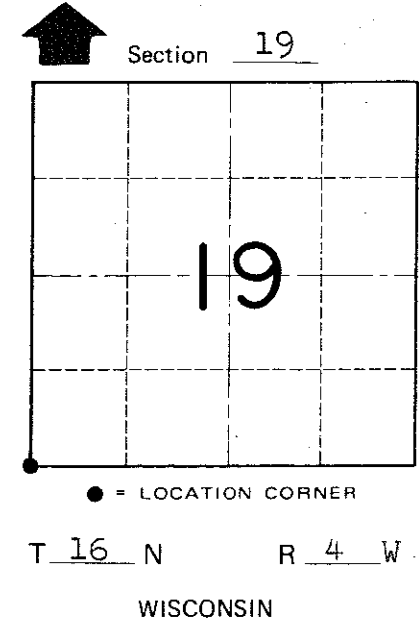
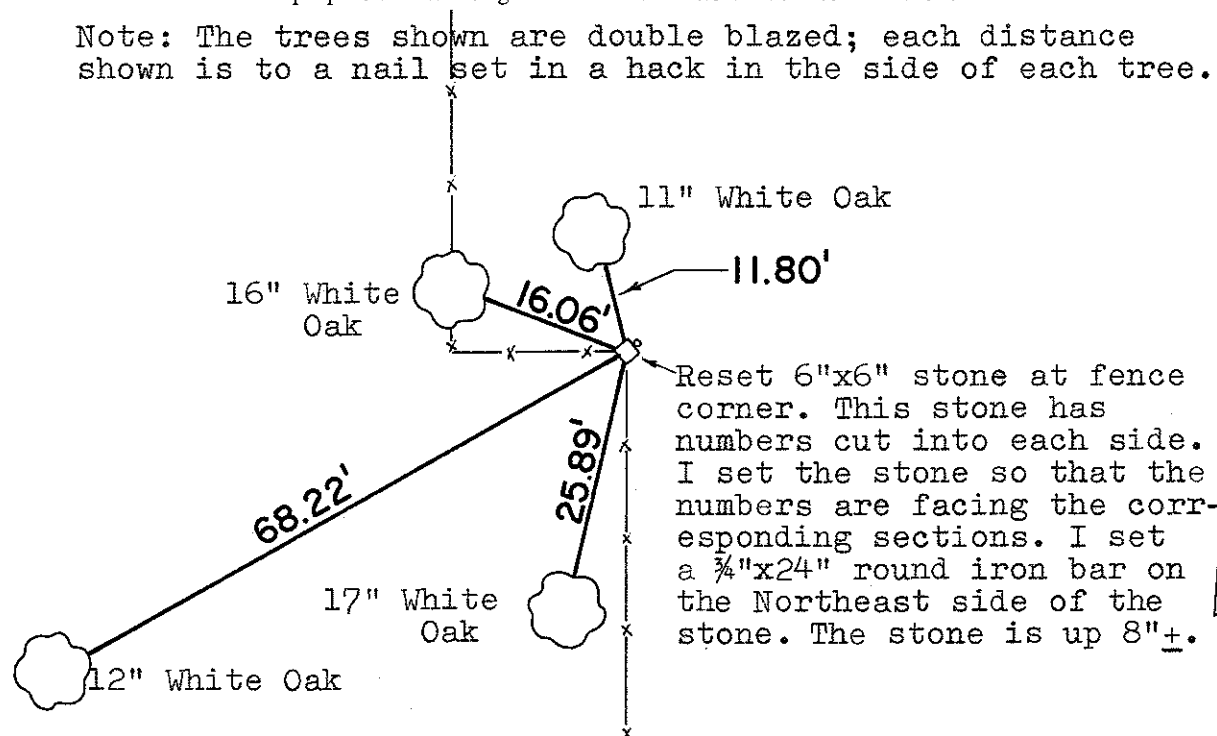
Description of corner and witness monuments, references and accessories used to perpetuate the original or re-established location of this corner:

Crew: Meyer, Lund
Date: July 27, 1984 - 1:30 P. M.
Weather P. Cloudy, Breezy, 70°±.
Witnesses to corner location:

Bryan H. Meyer - R. L. S. 1712

James Lund

Note: The trees shown are double blazed; each distance shown is to a nail set in a hack in the side of each tree.



SURVEY CONTROL ORDER

Horizontal _____
Vertical _____

Corner	East (X)	North (Y)	Elevation (Z)	Zone
Control Sta. Name				

WISCONSIN COORDINATE SYSTEM

[redacted] Village of Leon

County of Monroe