

21605120000

I, Bryan H. Meyer, do hereby certify that on the 1st day of October 1984, I found (evidence) [redacted] of the Northwest corner of Section 18, T 16 N, R 4 W Fourth Principal Meridian, and I re-established said corner according to the Wisconsin Statutes as shown and described hereon.

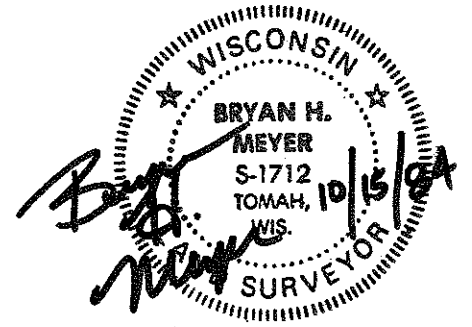
Dated this 15th day of Oct. 1984.

Bryan H. Meyer
Deputy County Surveyor
Title

History of corner establishment since Original Government Survey
Henry I. Bliss, County Surveyor of LaCrosse County, surveyed the entire Township of Bangor in 1867 and set monuments at each Section and Quarter corner.

Description of corner evidence found:

Found a 6"x6" stone, up 3", 3'+ West of a 2-way fence corner. This stone is similar to others found on the West line of the Township of Leon, therefore, I accepted the stone as the corner.

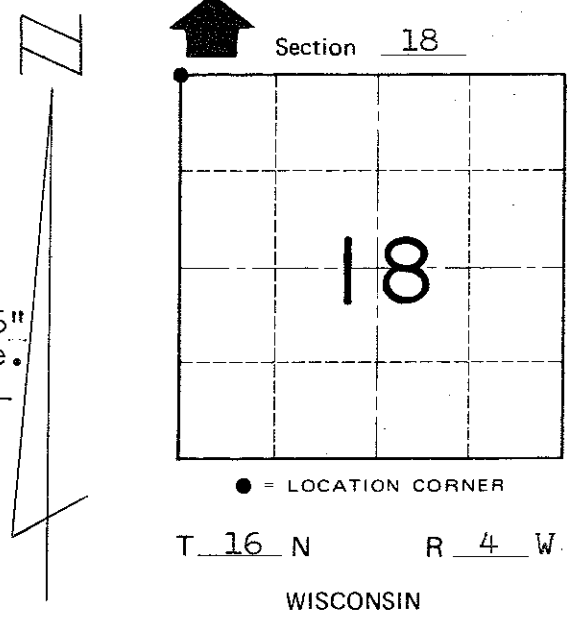
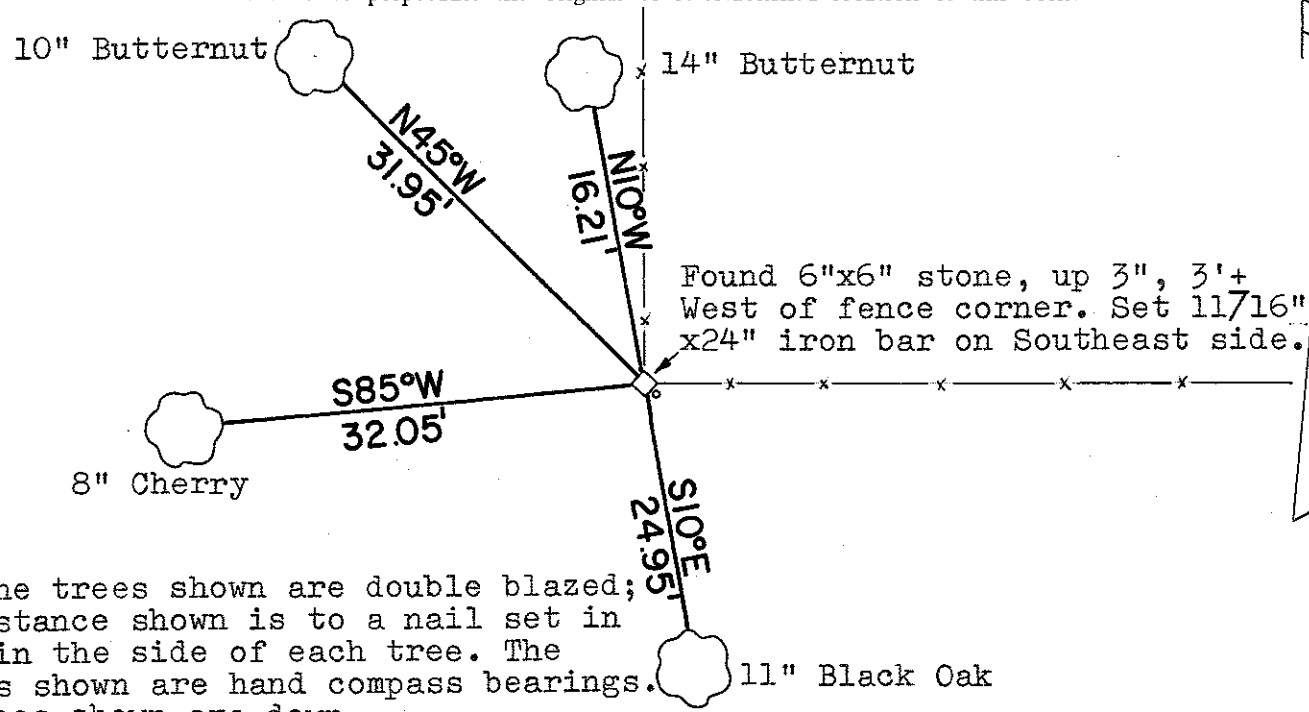


COUNTY SURVEYOR FORM NO. 1

Description of corner and witness monuments, references and accessories used to perpetuate the original or re-established location of this corner:

Crew: Wilhite, Lund
Date: October 1, 1984
Weather: Clear, 65°±
Witnesses to corner location:

Dallas Wilhite
Jim Lund



Note: The trees shown are double blazed; each distance shown is to a nail set in a hack in the side of each tree. The bearings shown are hand compass bearings. The fences shown are down.

SURVEY CONTROL ORDER
Horizontal _____
Vertical _____

Corner	East (X)	North (Y)	Elevation (Z)	Zone
Control Sta. Name				

[redacted] Town of Leon
County of Monroe