

21605012000

I, William C. Jung, do hereby certify that on the 17<sup>th</sup> day of November 1981, I found (evidence) ~~██████████~~ of the West 1/4 corner of Section 6, T 16 N, R 4 W Fourth Principal Meridian, and I re-established said corner according to the Wisconsin Statutes as shown and described hereon.

Dated this 19<sup>th</sup> day of Nov. 1981.

William C. Jung

R. L. S. 1323  
Title

*William C. Jung*

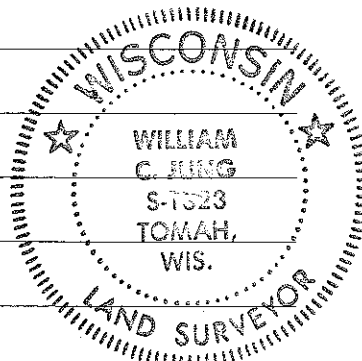
Description of corner and witness monuments, references and accessories used to perpetuate the original or re-established location of this corner:

Witnesses to corner location:

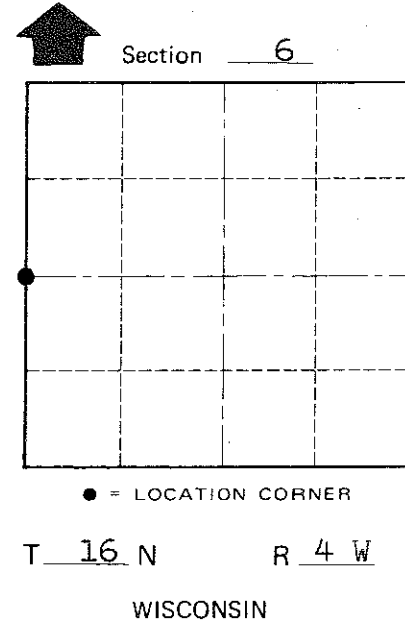
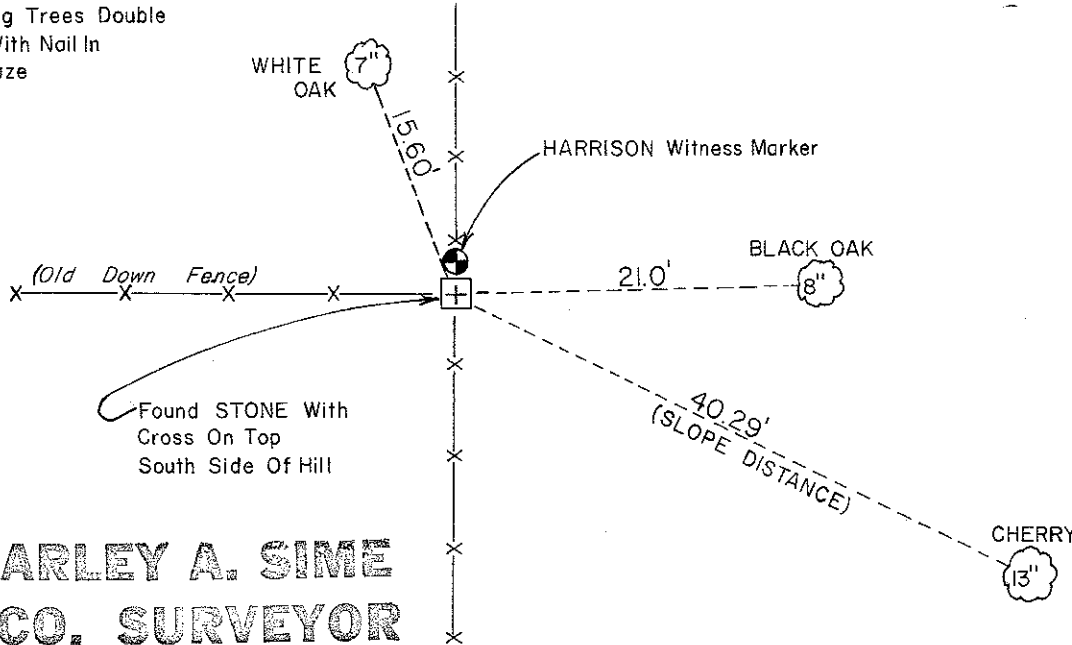
Jung

Dechant

Pietz



All Bearing Trees Double Blazed With Nail In Lower Blaze



Approved: **HARLEY A. SIME**  
**MONROE CO. SURVEYOR**

SURVEY CONTROL ORDER

Horizontal	_____
Vertical	_____

WISCONSIN COORDINATE SYSTEM

Corner	East (X)	North (Y)	Elevation (Z)	Zone
Control Sta. Name				

~~Enc. Village of~~ Town Leon  
County of Monroe  
Wisconsin

COUNTY SURVEYOR FORM NO. 1