

21604350020

I, Lawrence A. Feddersen, do hereby certify that on the Seventh day of December 1988, I found (evidence) (no evidence) of the North Quarter corner of Section 2, T 15 N, R 4W Fourth Principal Meridian, and I re-established said corner according to the Wisconsin Statutes as shown and described hereon.

Dated this 30 day of March 1990.

Lawrence A. Feddersen  
Registered Land Surveyor  
Title

History of corner establishment since Original Government Survey

After original survey in 1845, Ingalls was at this corner in 1873. Fred Holden set a stone at this corner in May, 1911, using the two existing bearing trees.

Description of corner evidence found:

We could not find stone set by Fred Holden in 1911. Set Harrison in SE quadrant of a 4-way fence corner, using this as best possible evidence. A 1" I.P. was set by Greg J. Hofmeister in January 1982, 3.66 feet West of Harrison (2.25 feet West of corner fence post). I have no record of what this I.P. represents. The corner falls West of 1/2 way between NE and NW corner by 3.75 feet. In this very hilly terrain, original surveyors did well.

COUNTY SURVEYOR FORM NO. 1

Description of corner and witness monuments, references and accessories used to perpetuate the original or re-established location of this corner:

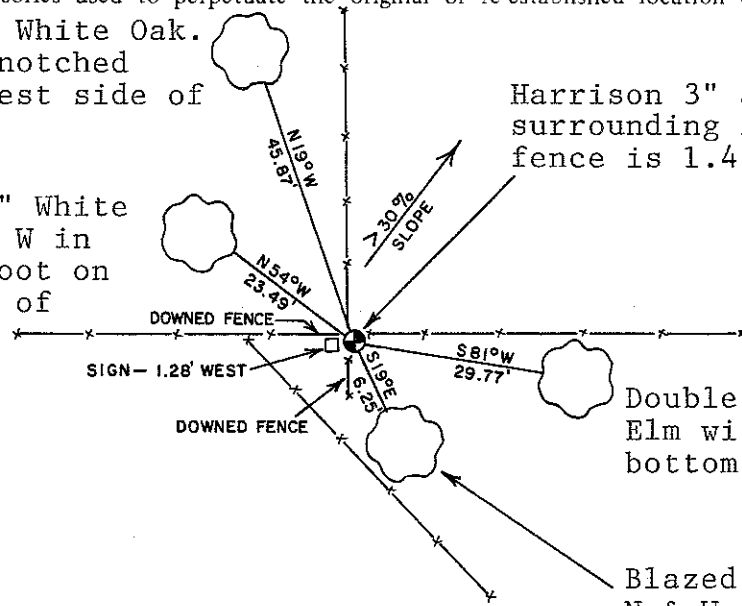
Witnesses to corner location:

- Lawrence A. Feddersen
- Timothy Jeatran
- Paul Felber
- Gary Dechant

Blazed 8" White Oak. N & W in notched root on West side of tree.

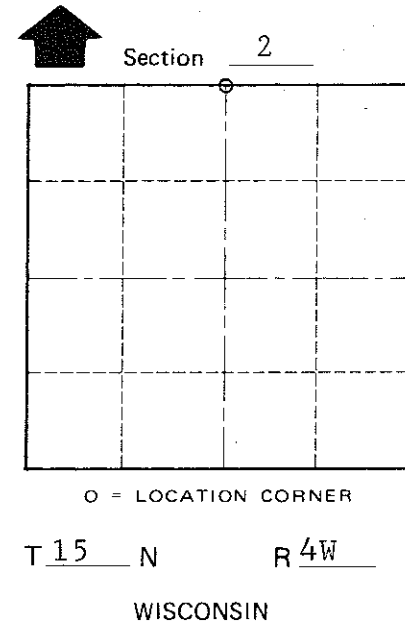
Blazed 18" White Oak. N & W in notched root on East side of tree.

Harrison 3" above ground with stones surrounding it. Fence post of 3-way fence is 1.4' West.



Double blazed 10 1/2" Elm with N & W in bottom blaze.

Blazed 10 1/2" Norway Pine. N & W in notched root on North side of tree. Part of small Pine plantation on side hill.



SURVEY CONTROL ORDER

Horizontal	
Vertical	

WISCONSIN COORDINATE SYSTEM

Corner	East (X)	North (Y)	Elevation (Z)	Zone
Control Sta. Name				

City, Village or Town Portland  
County of Monroe