

40

**U.S. PUBLIC LAND CORNER
MAINTENANCE**

Corner ID : E1/4 Sec.12, T16N-R4W

21604122000

<u>DATE</u>	<u>CREW</u>	<u>MONUMENT TYPE -----</u>
October 3, 2014	Zachariah P.Dechant Gary L. Dechant	Found Harrison in tact 39' south of Jancing Ave. West of Jancing Ave/Jason Ave intersection. Placed anchor and concrete around Harrison.

References:

	<u>Bearing</u>	<u>Distance</u>
1) Set 3/4"x24" square iron bar, down 6", 4.5' west of fence, 5' south of 14" Cedar	N2E	96.12'
2) Set 3/4"x24" square iron bar, down 6", 1.5' north of fire no. sign 9988	N44E	76.36'
3) Set 3/4"x24" square iron bar, down 6", 4' west of 6" Cedar	S62E	52.71'
4) Set 3/4"x24" square iron bar, down 6" half way between 6" Burr Oak and 14" Burr Oak	N79W	52.92'
5) Existing 3/4" round iron bar	South (on Section line)	3.81'
6) notch (seam) on SE side of vertical culvert with vent pipe	N53E	4.73'



I, Mark R. Heidecke, do hereby certify that on the 29th day of May 19 80, I found (evidence) ~~(no evidence)~~ of the East 1/4 corner of Section 12, T 16 N, R 4 W Fourth Principal Meridian, and I re-established said corner according to the Wisconsin Statutes as shown and described hereon.

Dated this 6th day of June 19 80.

Mark R. Heidecke
Registered Land Surveyor
Title

History of corner establishment since Original Government Survey

After the Original U. S. Government Survey in Monroe County, Fred Holden ran the East line of Section 12-T16N-R4W and found a stone set by Kenyon and the original bearing trees.

Description of corner evidence found:

A Harrison monument was set to replace a plow-moldboard found at this corner. The stone mentioned by Holden was not found after digging in this area.

See Reverse Side For Maintenance

COUNTY SURVEYOR FORM NO. 1

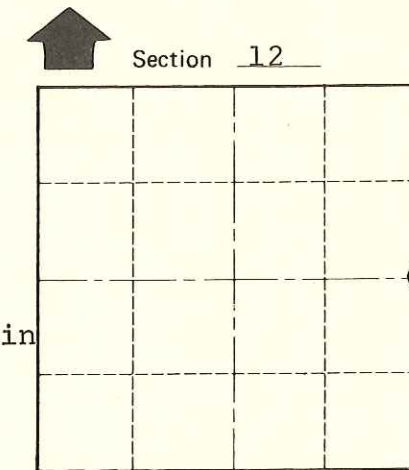
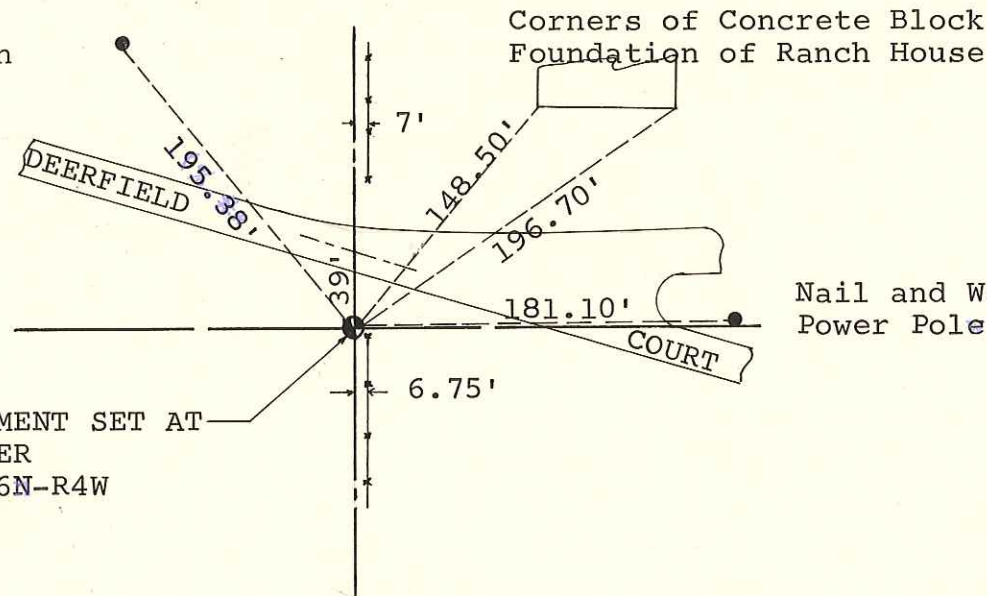
Description of corner and witness monuments, references and accessories used to perpetuate the original or re-established location of this corner:

Witnesses to corner location:

Mark Heidecke
Lawrence Feddersen

Nail and Washer in Power Pole

HARRISON MONUMENT SET AT EAST 1/4 CORNER SECTION 12-T16N-R4W



O = LOCATION CORNER
T 16 N R 4 W
WISCONSIN

SURVEY CONTROL ORDER

Horizontal	<u>711.11</u>
Vertical	<u>12.11</u>

WISCONSIN COORDINATE SYSTEM

Corner	East (X)	North (Y)	Elevation (Z)	Zone
Control Sta. Name				

~~City of Leon~~ Town OF LEON
County of MONROE