

CERTIFICATE

CERTIFIED LAND CORNER

No. 126

21604340020

I, Gregory J. Hofmeister, do hereby certify that on the Eighth day of December 1981, I found (evidence) ~~(no evidence)~~ of the South Quarter corner of Section 34, T 16 N, R 4 W Fourth Principal Meridian, and I re-established said corner according to the Wisconsin Statutes as shown and described hereon.

Dated this 29th day of January 1982.

Gregory J. Hofmeister

Registered Land Surveyor S-1113
Title

History of corner establishment since Original Government Survey

This corner established by Uriah Biggs in 1845. In 1880 A.B. Holden identified the original bearing trees and in 1906 Fred Holden observed one of the two original trees, however neither remonumented the corner.

Description of corner evidence found:

A rotted corner post with fences north and west was found which fit the proportionate measurements within 16 feet to the west of the proportionate location and within seven feet to the north of the proportionate location. Also, this location fits the location of the north-south forty fence of the S 1/6 SW within two feet.

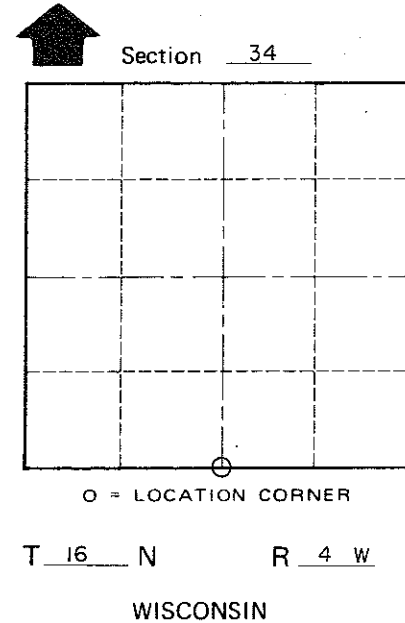
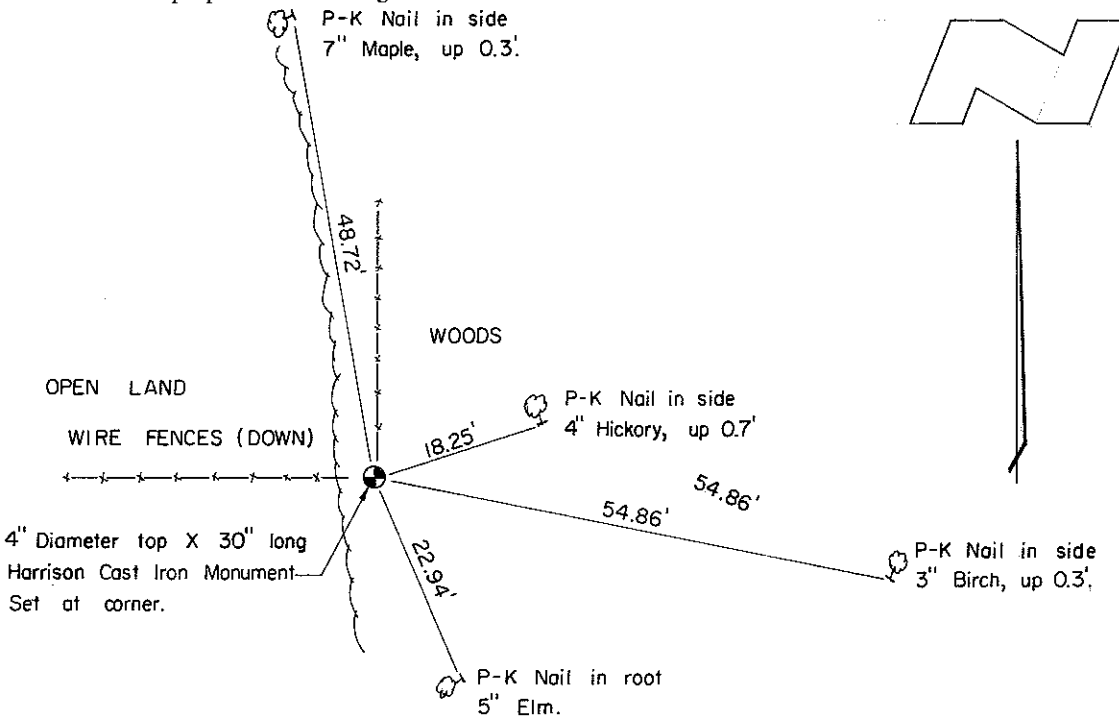
Description of corner and witness monuments, references and accessories used to perpetuate the original or re-established location of this corner:

Witnesses to corner location:

Gregory J. Hofmeister

Ernest H. Koeppe

**Approved: HARLEY A. SIME
MONROE CO. SURVEYOR**



COUNTY SURVEYOR FORM NO. 1

SURVEY CONTROL ORDER

Horizontal	_____
Vertical	_____

WISCONSIN COORDINATE SYSTEM

Corner	East (X)	North (Y)	Elevation (Z)	Zone
Control Sta. Name				

~~City, Village or Town~~ of Leon

County of Monroe