

21604322000

I, Ronald D. Parish, do hereby certify that on the 8th day of August 1984, I found (evidence) (~~no evidence~~) of the W¹/₄ corner of Section 33, T 16 N, R 4 W Fourth Principal Meridian, and I re-established said corner according to the Wisconsin Statutes as shown and described hereon.

Dated this 15th day of Aug. 1984.

Ronald D. Parish

Registered Land Surveyor
Title

History of corner establishment since Original Government Survey
No known recorded history since the original survey

Description of corner evidence found:

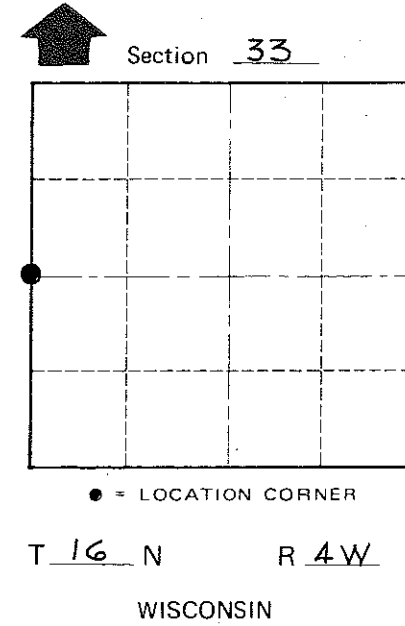
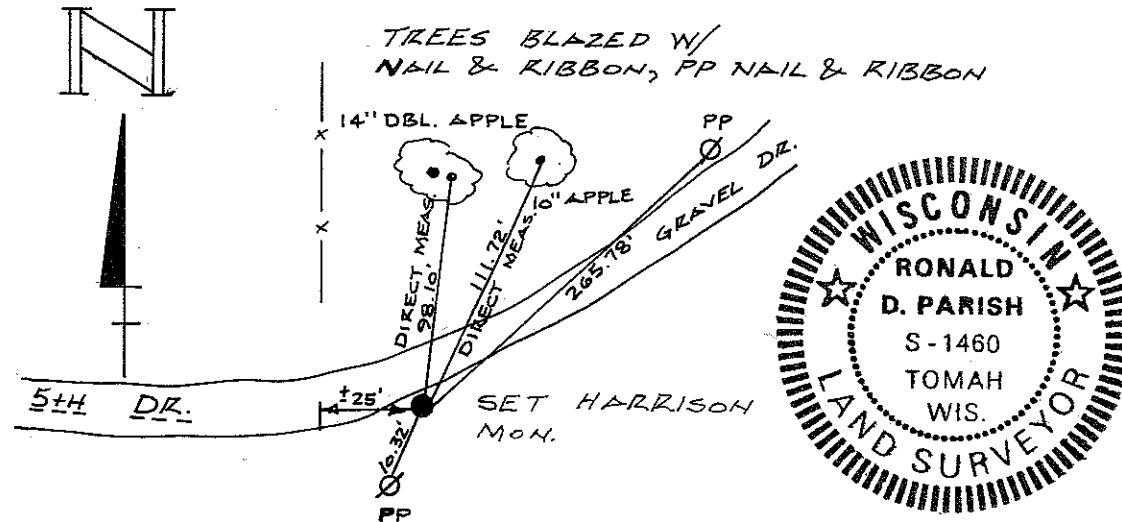
Set the corner equi distance from the NW corner and the SW corner of the Section and to match what little occupation I could find along the north-south line. This fits the centerline of 5th Drive, a Town Road very well.

Description of corner and witness monuments, references and accessories used to perpetuate the original or re-established location of this corner:

Witnesses to corner location:

Ronald D. Parish

Charles Dade



COUNTY SURVEYOR FORM NO. 1

SURVEY CONTROL ORDER

Horizontal	_____
Vertical	_____

WISCONSIN COORDINATE SYSTEM

Corner	East (X)	North (Y)	Elevation (Z)	Zone
Control Sta. Name				

City, Village or Town LEON

County of MONROE