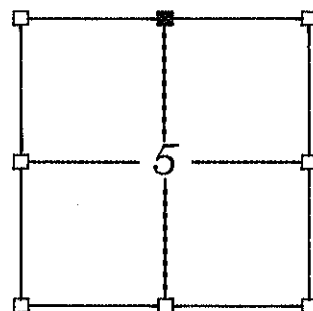


U.S. PUBLIC LAND SURVEY MONUMENT RECORD

NORTH QUARTER CORNER  
SECTION 5, T15N, R4W  
TOWN OF PORTLAND  
MONROE COUNTY, WISCONSIN

I, PAUL FAIRCHILD, CERTIFY THAT THE  
CORNER LOCATION ON THIS RECORD WAS  
DETERMINED BY ME AND THAT THIS U.S.  
PUBLIC LAND SURVEY MONUMENT RECORD  
IS CORRECT AND COMPLETE TO THE  
BEST OF MY KNOWLEDGE AND BELIEF.



■ - CORNER LOCATION  
T 15 N R 4 W  
TOWN OF PORTLAND

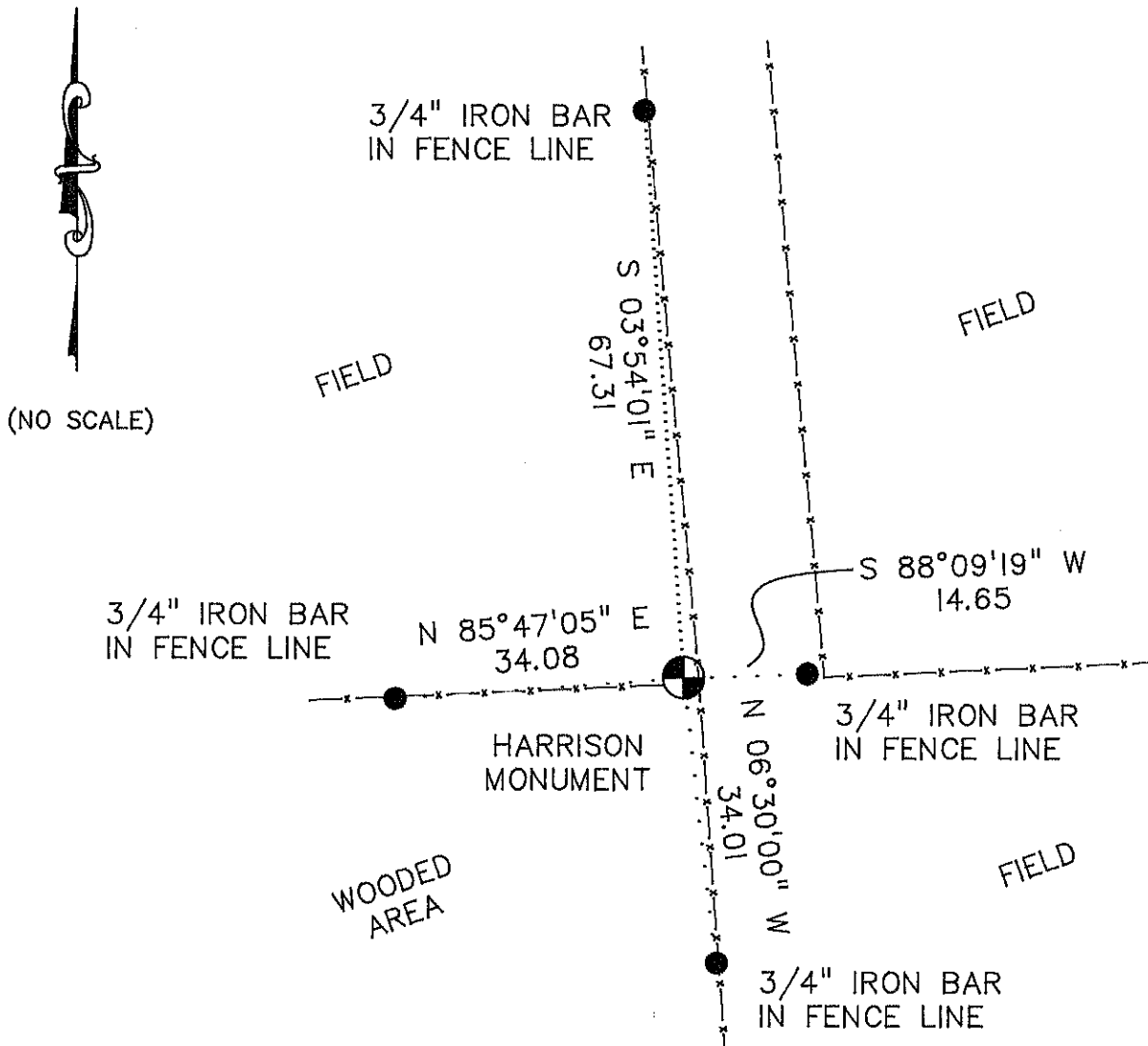
DATED THIS 10TH DAY OF MAY 2004

*Paul Fairchild* 5-10-04

PAUL FAIRCHILD R.L.S. #2058

DESCRIPTION OF CORNER EVIDENCE FOUND:  
FOUND NAIL AT FENCE CORNER

DESCRIPTION OF CORNER AND WITNESS MONUMENTS, REFERENCE AND ACCESSORIES USED TO  
PERPETUATE THE ORIGINAL OR REESTABLISHED LOCATION OF THIS CORNER:  
FOUND NAIL AT NORTH/SOUTH AND EAST/WEST INTERSECTING FENCES. FOUND NAIL FIT  
WELL WITH SECTION CORNERS TO NORTH, SOUTH, EAST, AND WEST. REMOVED NAIL AND  
RESET WITH HARRISON MONUMENT. (MONUMENT IS LOCATED NORTHWEST OF THE FENCE  
CORNER POST.)



MONROE COUNTY COORDINATES  
N 331774.42  
E 607878.56