

CERTIFICATE

CERTIFIED LAND CORNER

No. 112

21604300020

I, Christian J Running, do hereby certify that on the 17<sup>th</sup> day of March, I found ~~(evidence)~~ (no evidence) of the N 1/4 corner of Section 31, T 16 N, R 4 W Fourth Principal Meridian, and I re-established said corner according to the Wisconsin Statutes as shown and described hereon.

Dated, this 21 day of March 2002.

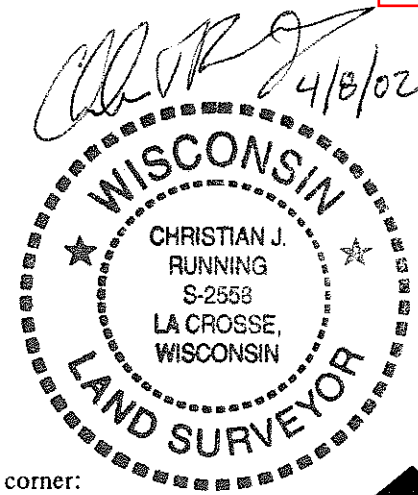
Christian J Running  
Title RLS-2558

History of corner establishment since Original Government Survey

No recorded History since the original Government Survey

Description of corner evidence found:

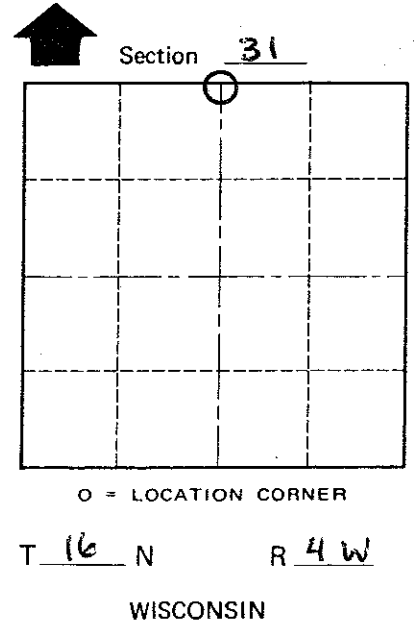
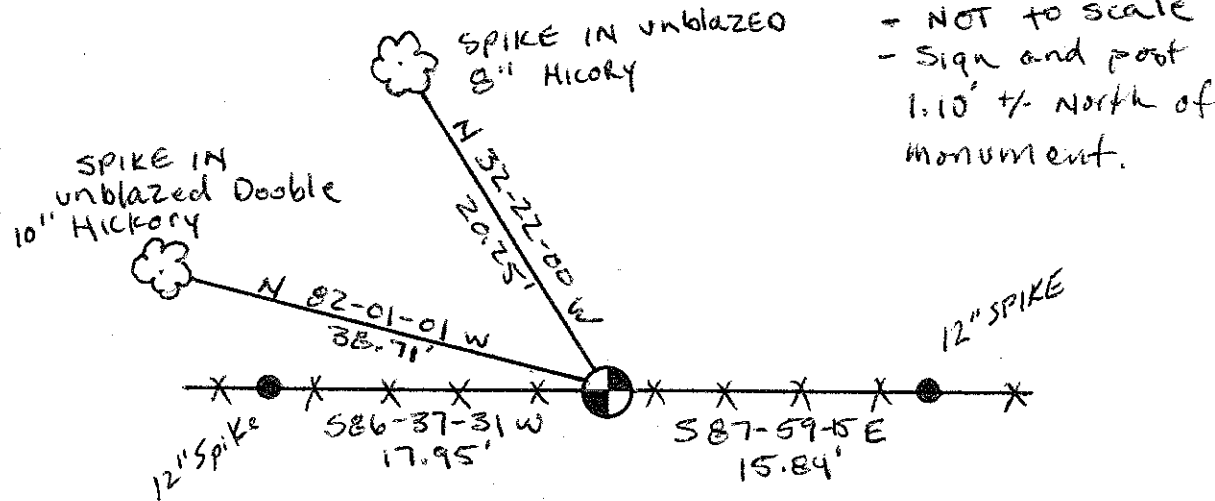
Set TCP monument by extending N-S 1/4 line north to intersect E-W fence along the N/L of Section 31.



Description of corner and witness monuments, references and accessories used to perpetuate the original or re-established location of this corner:

Witnesses to corner location:

Chris Running  
Erik Running



COUNTY SURVEYOR FORM NO. 1

SURVEY CONTROL ORDER

Horizontal \_\_\_\_\_  
Vertical \_\_\_\_\_

WISCONSIN COORDINATE SYSTEM

Corner	East (X)	North (Y)	Elevation (Z)	Zone
Control Sta. Name				

City, Village or Town LEON

County of Monroe

# MONROE COUNTY

## U.S. PUBLIC LAND SURVEY MONUMENT RECORD

N 1/4 Corner common to Sections 30 & 31

30	30
31	31

T. 16 N., R. 4 W.  
 Type of monument TCP MONUMENT

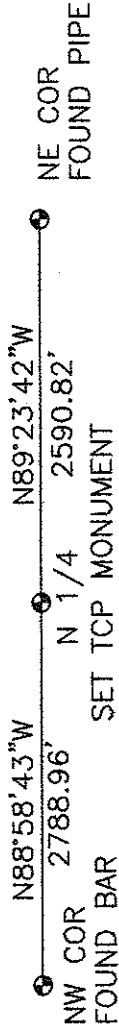
Location indicated on sketch - -

Location Sketch

Describe any record evidence, monument evidence, occupational evidence, testimonial evidence or any other material evidence you considered, and whether the monument was found or placed. Was the corner restored through acceptance of (1) an obliterated evidence location, (2) a found perpetuated location, or (3) an existent corner location?

Set corner by extending occupied North-South 1/4 line to intersect the occupied East-West line along the North line of Section 31.

Was the corner reestablished through lost corner proportionate methods? If so, show the method including the directions and distances to other public land survey corners used as evidence or used for proportioning in determining the corner location.

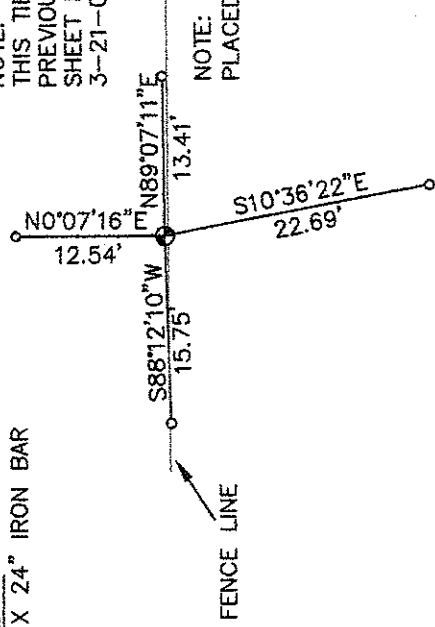


Show the corner history of record in chronological order from Original Government Survey to present.

No recorded history since the original Gov. Survey.

Show a plan view drawing depicting the relevant monuments, providing reference ties to at least 4 witness monuments. Describe witness monuments. Show relationship to occupation.

LEGEND  
 3/4" X 24" IRON BAR



NOTE:  
 THIS TIE SHEET IS TO REPLACE  
 PREVIOUSLY RECORDED TIE  
 SHEET NUMBER 112, DATED  
 3-21-02

NOTE:  
 PLACED SIGN 1'± NORTH

Corner identifier number 112 (Page 2)

I, Christian J. Running  
 certify that the corner location shown on this record  
 was determined by me or under my direction and control  
 and that this U.S. Public Land Survey Monument Record  
 is correct to the best of my knowledge and belief.



Signature 4/16/05  
 Date

no scale

