

21604290000

I, Ronald D. Parish, do hereby certify that on the 8th day of August 1984, I found (evidence) (~~no evidence~~) of the NW corner of Section 33, T 16 N, R 4 W. Fourth Principal Meridian, and I re-established said corner according to the Wisconsin Statutes as shown and described hereon.

Dated this 15th day of Aug. 1984.

Ronald D. Parish

Registered Land Surveyor  
Title

History of corner establishment since Original Government Survey

No known recorded history since the original survey.

Description of corner evidence found:

Could find no evidence of the original corner or witness trees. Set the corner at a three-way fence corner. These fence lines appear to be very old and the distances for each of the half miles to the east are within 5 feet of being the same (See Survey Data Sheet).

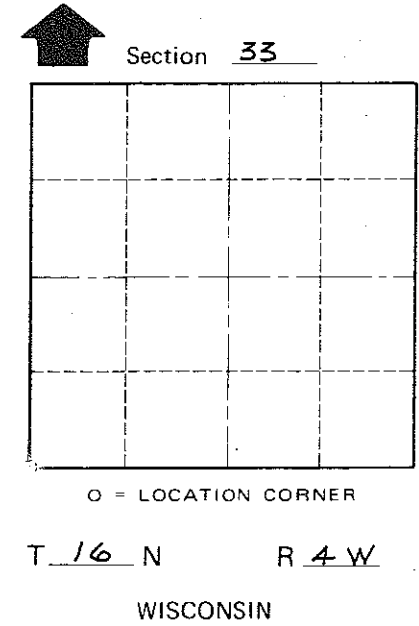
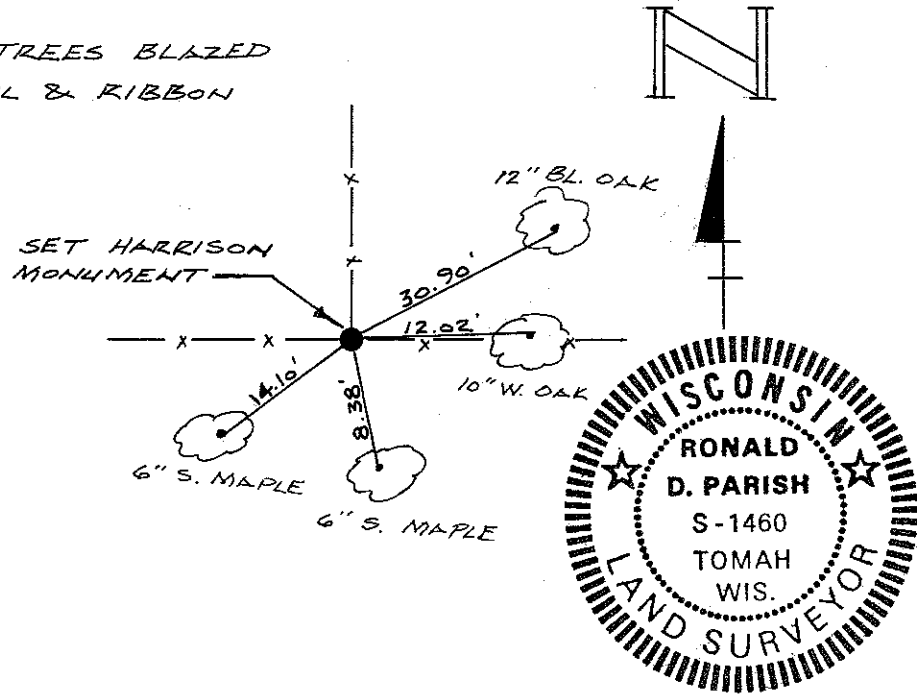
Description of corner and witness monuments, references and accessories used to perpetuate the original or re-established location of this corner:

Witnesses to corner location:

Ronald D. Parish

Charles Dade

ALL TREES BLAZED  
W/NAIL & RIBBON



COUNTY SURVEYOR FORM NO. 1

SURVEY CONTROL ORDER

Horizontal	_____
Vertical	_____

WISCONSIN COORDINATE SYSTEM

Corner	East (X)	North (Y)	Elevation (Z)	Zone
Control Sta. Name				

City, Village or Town LEON

County of MONROE