

21604282000

I, William C. Jung, do hereby certify that on the 11th day of February 1982, I found (evidence) (~~was found~~) of the W¹/₄ corner of Section 27, T16 N, R4 W Fourth Principal Meridian, and I re-established said corner according to the Wisconsin Statutes as shown and described hereon.

History of corner establishment since Original Government Survey

Schroeder (Kenyon?) was at this corner in June of 1886 and reset the corner. The old 1915 Plat Book shows the road to be on the N - S line at this point. Larry Feddersen set an I.B. at this corner in Oct., 1978.

Description of corner evidence found:

Found a 1 1/4" round I.B. at an old fence corner. Removed the I.B. and replaced it with a Harrison monument. While digging, we pulled out remains of an old corner post and tie wires. The corner falls in an old excavated road bed and falls west of the old center line. Accepted the monument at the old occupied corner as the best available evidence of the original govt. corner.

Dated this 17th day of Feb. 1982.

William C. Jung, R.L.S. 1323

County Surveyor's Office

Title

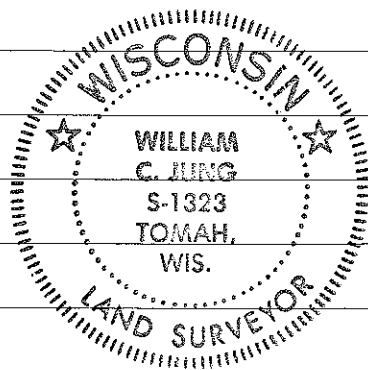
William C. Jung

Description of corner and witness monuments, references and accessories used to perpetuate the original or re-established location of this corner:

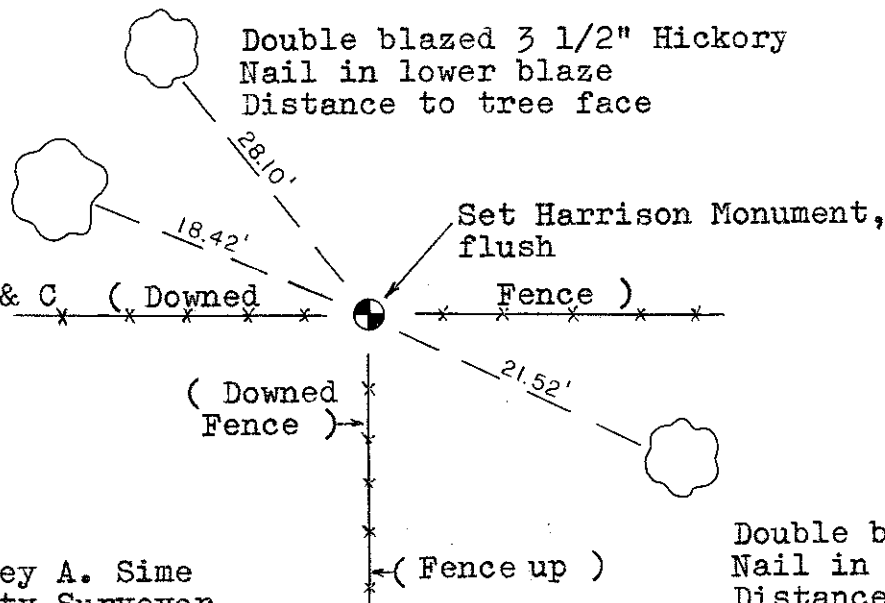
Witnesses to corner location:

W. Jung

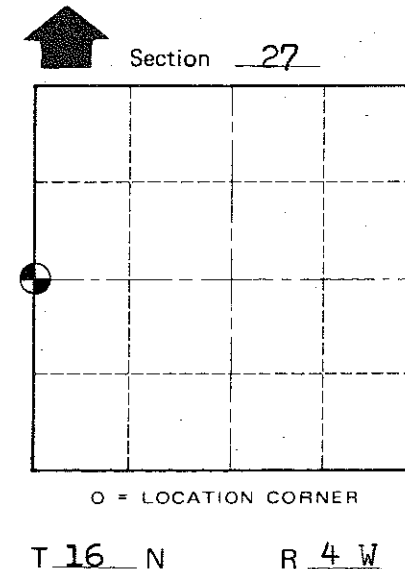
G. Dechant



Ex. N & C in single blazed 17" Black Oak Distance to N & C (Downed Fence)



N



O = LOCATION CORNER

T 16 N R 4 W

WISCONSIN

Double blazed 8" Hickory Nail in lower blaze Distance to tree face

Approved by: Harley A. Sime
County Surveyor

SURVEY CONTROL ORDER

Horizontal	_____
Vertical	_____

WISCONSIN COORDINATE SYSTEM

Corner	East (X)	North (Y)	Elevation (Z)	Zone
Control Sta. Name				

City, Village or Town Leon
County of Monroe

COUNTY SURVEYOR FORM NO. 1