

21604270020

I, Gregory J. Hofmeister, do hereby certify that on the Fourth day of December 1981, I found (evidence) (~~no evidence~~) of the North Quarter corner of Section 34, T16 N, R 4 W Fourth Principal Meridian, and I re-established said corner according to the Wisconsin Statutes as shown and described hereon.

Dated this 29th day of January 1982.

Gregory J. Hofmeister

Registered Land Surveyor S-1113
Title

History of corner establishment since Original Government Survey

This corner was established in 1847 by Henry Moddin. Fred Holden visited the corner in 1901 and again in 1906. On both visits Holden observed one original bearing tree. In 1906 he tied to a new White Oak, but on neither occasion was the corner remonumented.

Description of corner evidence found:

A fence corner for fences from the north and east was found which is said to be the corner location according to the owners of the property to the south and west. * This location gives a reasonable distance and bearing from the existing monument at the northwest corner. The distance from this monument to the existing monument at the northeast corner of the section is short of the recorded 40.03 chains, however I feel that the existing fence represents the best location for the corner.

* Neal & Gerald Green.

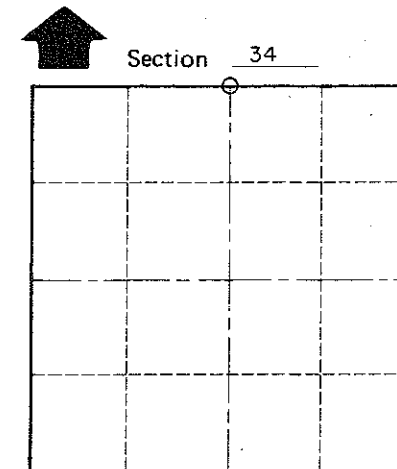
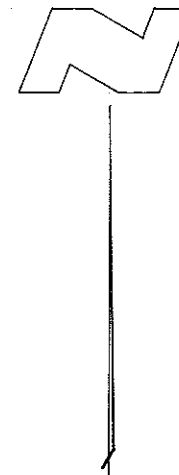
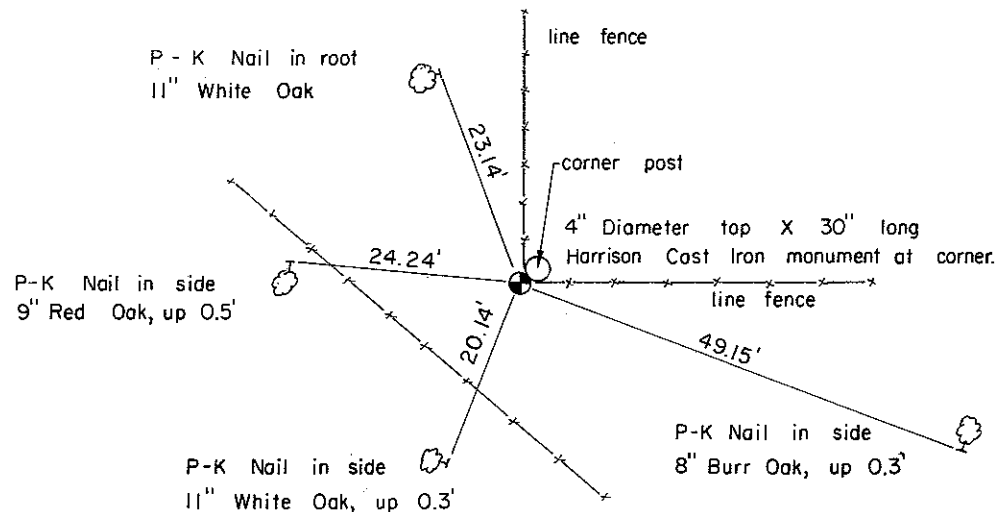
Description of corner and witness monuments, references and accessories used to perpetuate the original or re-established location of this corner:

Witnesses to corner location:

Gregory Hofmeister

Ernest H. Koeppe

Approved: **HARLEY A. SIME**
MONROE CO. SURVEYOR



O = LOCATION CORNER

T 16 N R 4 W

WISCONSIN

COUNTY SURVEYOR FORM NO. 1

SURVEY CONTROL ORDER

Horizontal	_____
Vertical	_____

WISCONSIN COORDINATE SYSTEM

Corner	East (X)	North (Y)	Elevation (Z)	Zone
Control Sta. Name				

City, Village or Town of LEON

County of MONROE