

CERTIFICATE

CERTIFIED LAND CORNER

No. 105

21604270000

I, Robert M. Lampman, do hereby certify that on the 15th day of September 1977, I found (evidence) (~~no evidence~~) of the SW corner of Section 26, T16 N, R 4W ~~X~~, Fourth Principal Meridian, and I re-established said corner according to the Wisconsin Statutes as shown and described hereon.

Dated this 2nd day of Dec. 1977.

Robert M. Lampman

LAMPMAN & ASSOCIATES

Title

History of original corner establishment:

Sub-division of Township 16 North of Range 4 West, commenced February 5, 1847 completed February 20, 1847. Henry Maddin Deputy Surveyor under the direction of Geo. W. Jones, Surveyor General.

Description of corner evidence found:

Set corner at intersection of old fence lines. (Occupation evidence). After having run extensive control traverse in Section 26 and made extensive search for original corner and bearing trees in areas designated by recorded distance of original survey and or resurvey and having done the same in areas of occupation of said corner I accepted the old fence line intersection as the SW corner.

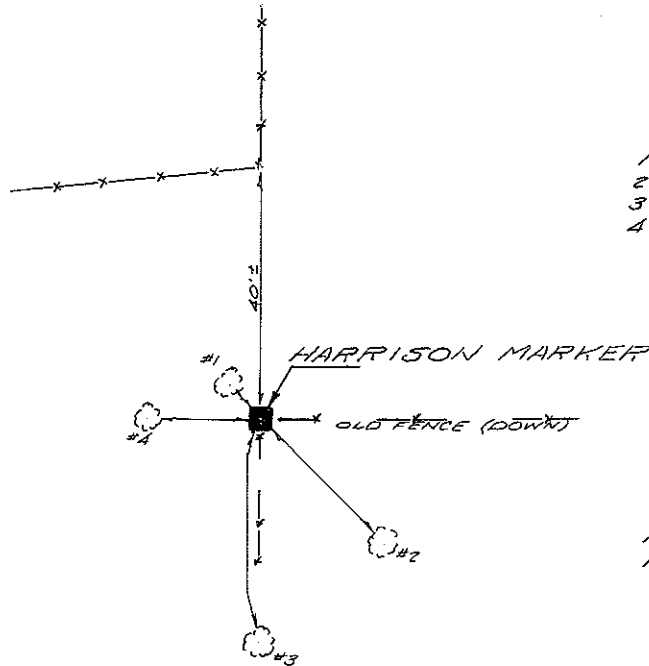
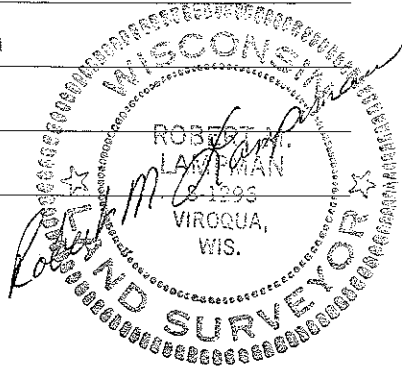
Description of corner and witness monuments, references and accessories used to perpetuate the original or re-established location of this corner:

Witnesses to corner location:

Ronald Hayden - Crew Chief

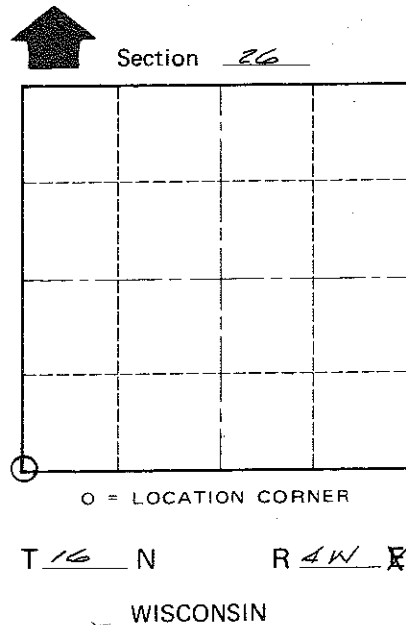
Randy Peterson

Jay Hoffman



TIES				
1	BUR OAK	11" DIAM.	N32°W	7.12'
2	BUR OAK	6" DIAM.	S45°E	27.09'
3	BUR OAK	16" DIAM.	SOUTH	34.35'
4	BUR OAK	13" DIAM.	N89°W	17.08'

NOTE: ALL TREES BLAZED WITH R.R. SPIKE SET



COUNTY SURVEYOR FORM NO. 1

SURVEY CONTROL ORDER

Horizontal	_____
Vertical	_____

WISCONSIN COORDINATE SYSTEM

Corner	East (X)	North (Y)	Elevation (Z)	Zone
Control Sta. Name				

City, Village or Town LEON

County of MONROE