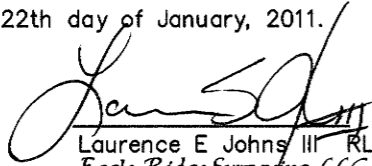


CERTIFICATE

I, Laurence E Johns III, do hereby certify that on the 6th day of August, 2010, I found Evidence of the W 1/4 Corner of Section 25, T16N, R4W, Fourth Principle Meridian, and I re-established said corner according to the Wisconsin Statutes as shown and described hereon.

Dated this 22th day of January, 2011.



Laurence E Johns III RLS 2804
Eagle Ridge Surveying, LLC
PO Box 213
Wilton, WI 54670

CERTIFIED LAND CORNER

History of corner establishment since Original Government Survey

Henry Maddin established this corner in February 1847.

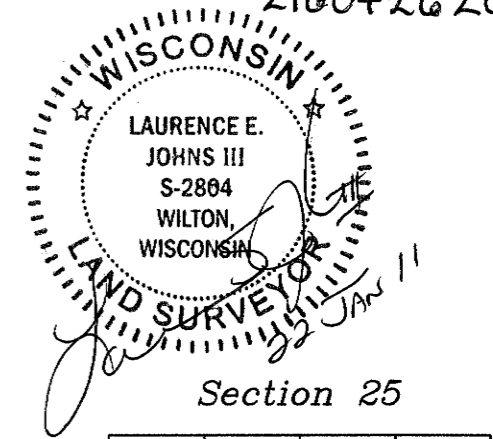
Robert Lampman re-established this corner from occupation in December 1977. He set a Harrison Mon and prepared a Tie Sheet.

Description of corner evidence found:

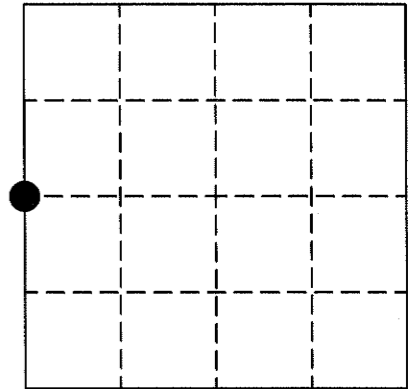
Found the Harrison Monument set by Lampman but was disturbed and broken, possibly by driveway maintenance. I found 2 of the ties set by Lampman.

Replaced the broken Harrison Mon, with another, using the two remaining ties.

No. 99
21604262000



Section 25



● = LOCATION CORNER
T16N R4W
WISCONSIN

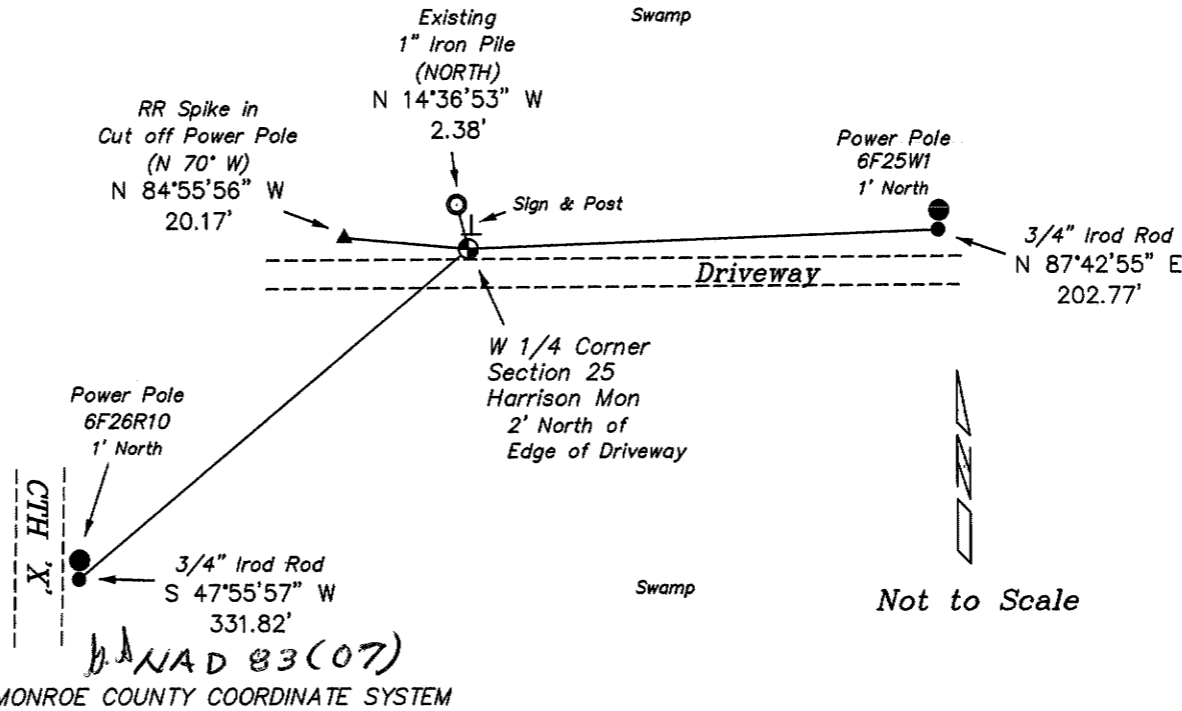
COUNTY SURVEYOR FORM NO. 1

Description of corner and witness monuments, references and accessories used to perpetuate the original or re-established location of this corner:

Witness to corner location:

Laurence E Johns III

Larry Handschy



Not to Scale

SURVEY CONTROL ORDER

Horizontal
Vertical

	North (Y)	East (X)	Elevation (Z)	Zone
W 1/4 Corner	339764.534	626251.118		
Control Sta. Name				

City, Village or Town Leon

County of Monroe

I, Robert M. Lampman, do hereby certify that on the 15th day of Septmeber 1977, I found (evidence) (~~no evidence~~) of the E 1/4 corner of Section 26, T16 N, R 4W, Fourth Principal Meridian, and I re-established said corner according to the Wisconsin Statutes as shown and described hereon.

Dated this 2nd day of Dec. 1977.

Robert M. Lampman
LAMPMAN & ASSOCIATES
 Title

History of original corner establishment:

Sub-division of Township 16 North of Range 4 West Commenced Feb. 5, 1847 Completed February 20, 1847. Henry Maddin, Deputy Surveyor under the direction of Geo. W. Jones, Surveyor General.

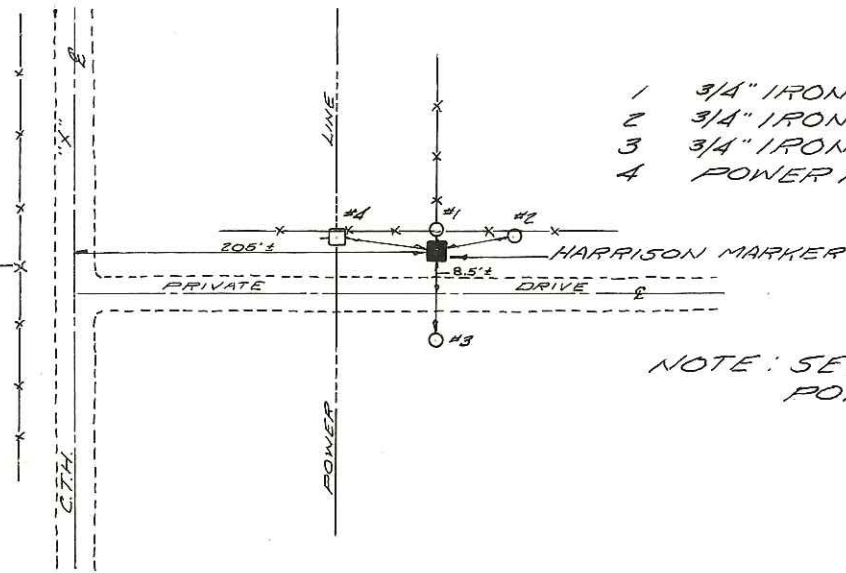
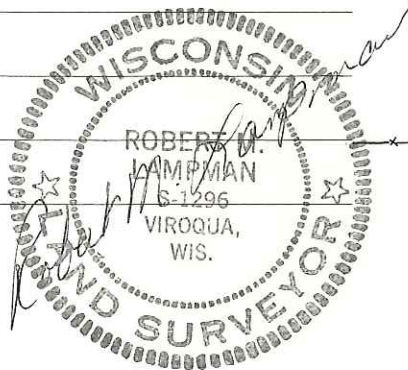
Description of corner evidence found:

After having run extensive control traverse in Section 26 and made extensive search for corner and bearing trees in areas designated by recorded distances of original survey and or resurvey and having done the same in areas of occupation of said corner, accepted evidence of occupation to set corner.

Description of corner and witness monuments, references and accessories used to perpetuate the original or re-established location of this corner:

Witnesses to corner location:

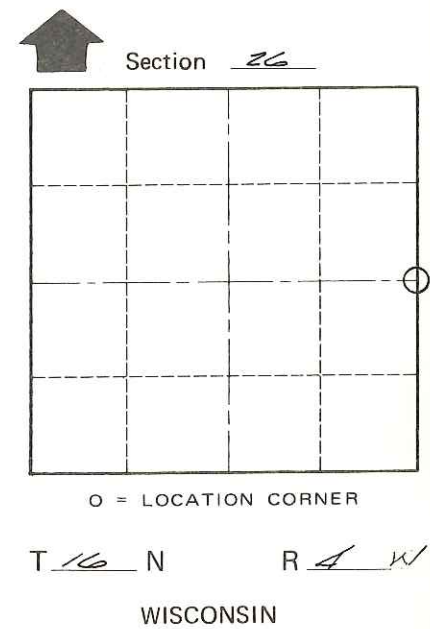
Ronald Hayden - Crew Chief
Randy Peterson
Jay Hoffman



- TIES**
- 1 3/4" IRON PIPE NORTH 2.38'
 - 2 3/4" IRON PIPE N55°E 16.14'
 - 3 3/4" IRON PIPE SOUTH 19.64'
 - 4 POWER POLE N70°W 20.17'

SIGN PLACED 1-20-92

NOTE: SET R.R. SPIKE IN POWER POLE



COUNTY SURVEYOR FORM NO. 1

SURVEY CONTROL ORDER

Horizontal	_____
Vertical	_____

WISCONSIN COORDINATE SYSTEM

Corner	East (X)	North (Y)	Elevation (Z)	Zone
Control Sta. Name				

City, Village or Town LEON
 County of MONROE