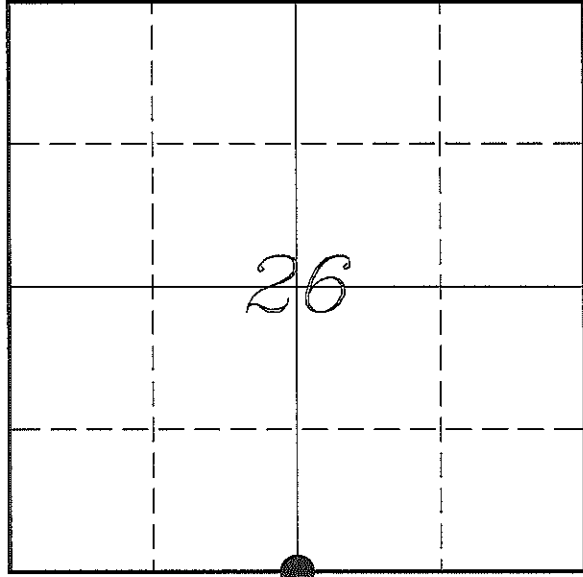


U. S. PUBLIC LAND SURVEY MONUMENT RECORD

SECTION 26, T16N, R4W, TOWN OF LEON
MONROE COUNTY, WISCONSIN



LOCATION OF LANDMARK

MONROE COUNTY COORDINATE SYSTEM	
Northing	337124.718
Easting	623623.004
Datum	NAD 1983 (2011)
Elevation	
Datum	
TYPE OF LANDMARK:	
Existing Harrison Monument	
BEARINGS ARE REFERENCED TO:	
Monroe County Coordinates	

Witnesses: Laurence E Johns III

Date: 17 April 2014

Describe any record evidence, monument evidence, testimonial evidence or any other material evidence you considered and whether the monument was found or restored through acceptance of an obliterated evidence location.

I found the Harrison Monument set by Lampman and one of his bearing trees (#4).

The Harrison Monument is on the SE Side of a 4-way fence corner.

I accepted this monument as the best available evidence of the original government corner and set 4 new ties.

Describe or show any material discrepancy between the location of the restored corner and that of the corner previously restored or re-established.

Henry Maddin established this corner in February 1847.

A S Ingalls may have been at this corner, in May 1873, during a survey in Section 35. He does not show this corner but he did establish the center of section at the mid-point between quarter corners.

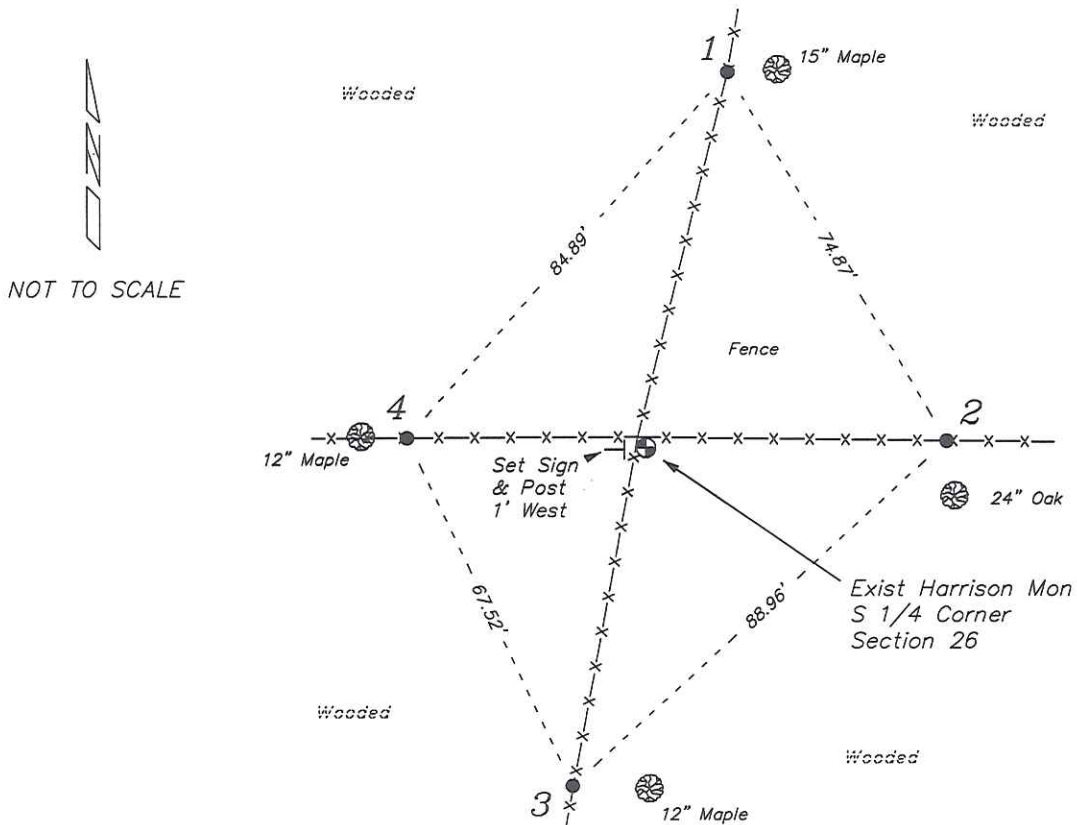
Robert Lampman was at this corner, in December 1977, during a survey in Section 26. He shows that he set a Harrison Marker at a four-way fence corner and marked four bearing trees.

Rodney Maxwell shows this corner on a survey in Section 26, in June 1999: He does not show a monument, he states that this corner was computed using a Section Breakdown.

Curtis Cummer was at this corner, in October 2001, during a survey in Section 26. He shows that he found a Harrison Monument.

RECORD OF DURABLE WITNESS MONUMENTS

NO	DESCRIPTION	BEARING	DISTANCE
1	Set 3/4" x 18" Iron Rod In Fence - 4' West of a 15" Maple	N 12°14'23" E	67.20'
2	Set 3/4" x 18" Iron Rod In Fence - 8' North of a 24" Oak	N 88°43'32" E	52.25'
3	Set 3/4" x 18" Iron Rod In Fence - 15' West of a 12" Maple	S 12°13'00" W	60.83'
4	Set 3/4" x 18" Iron Rod In Fence - 4' East of a 12" Maple	N 87°40'45" W	41.56'



PLAN VIEW DRAWING OF REFERENCE TIES

Map Showing Distance And Direction To Other Public Land Survey Corners Used For Re-Establishing The Corner

None



I, Laurence E Johns III RLS 2804, Registered Land Surveyor, hereby certify that the corner location shown on this record was determined by me or under my direction and control, and that this U.S. Public Land Survey Monument Record is correct and complete to the best of my knowledge and belief.

Laurence E. Johns III
 Laurence E Johns III RLS 2804
 Eagle Ridge Surveying
 PO Box 213
 Wilton, Wisconsin
 17 April 2014
 Revised
 15 September 2014

CERTIFICATE

CERTIFIED LAND CORNER

No. 104

21604260020

I, Robert M. Lampman, do hereby certify that on the 15th day of September 1977, I found (evidence) (~~no evidence~~) of the S 1/4 corner of Section 26, T16 N, R4W ~~X~~, Fourth Principal Meridian, and I re-established said corner according to the Wisconsin Statutes as shown and described hereon.

Dated this END day of DEC 1977.

Robert M. Lampman

LAMPMAN & ASSOCIATES
Title

History of original corner establishment:

Sub-division of Township 16 North of Range 4 West, Commenced February 5, 1847, completed February 20, 1847. Henry Maddin, Deputy Surveyor, under the direction of Geo. W. Jones, Surveyor General.

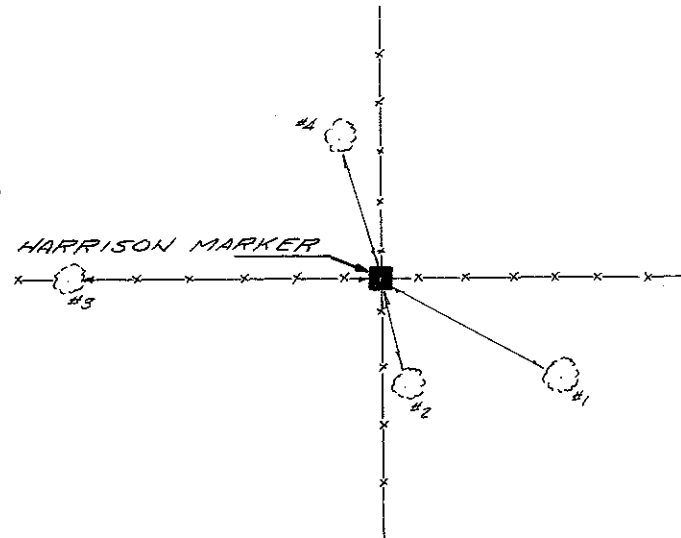
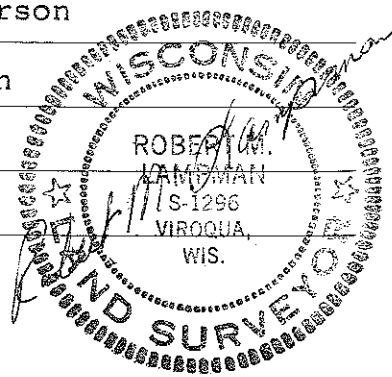
Description of corner evidence found:

After having run extensive control traverse of Section 26 and made extensive search for original corner and bearing trees in areas designated by recorded distances of original surveys and or resurveys and having done the same in areas of occupation of said corner, I accepted the (Occupation) fence line intersection as the S 1/4 corner.

Description of corner and witness monuments, references and accessories used to perpetuate the original or re-established location of this corner:

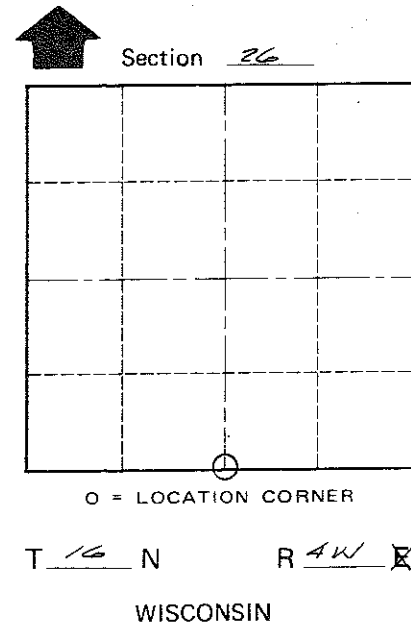
Witnesses to corner location:

Ronald Hayden - Crew Chief
Randy Peterson
Jay Hoffman



TIES				
1	OAK	2" DIAM.	S 60° E	21.46
2	"	11" DIAM.	S 10° E	11.65
3	"	9" DIAM.	WEST	32.84
4	"	11" DIAM.	N 15° W	14.49

NOTE: ALL TREES BLAZED WITH RR SPIKE SET



COUNTY SURVEYOR FORM NO. 1

SURVEY CONTROL ORDER

Horizontal	_____
Vertical	_____

WISCONSIN COORDINATE SYSTEM

Corner	East (X)	North (Y)	Elevation (Z)	Zone
Control Sta. Name				

City, Village or Town LEON

County of MONROE