

CERTIFICATE

CERTIFIED LAND CORNER

No. 82

21604240020

I, William C. Jung, do hereby certify that on the 21st day of April 1978, I found (evidence) (~~no evidence~~) of the S 1/4 corner of Section 24, T 16 N, R 4 W Fourth Principal Meridian, and I re-established said corner according to the Wisconsin Statutes as shown and described hereon.

History of original corner establishment:

No known recorded history since the original government survey.

Description of corner evidence found:

Accepted the occupied fence corner as the best available evidence. Fits the N-S 1/4 line very well.

Dated this 5th day of Jan. 1979.

William C. Jung, R.L.S. 1323

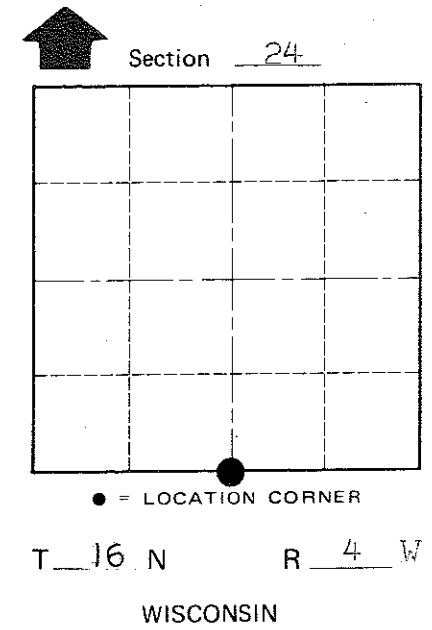
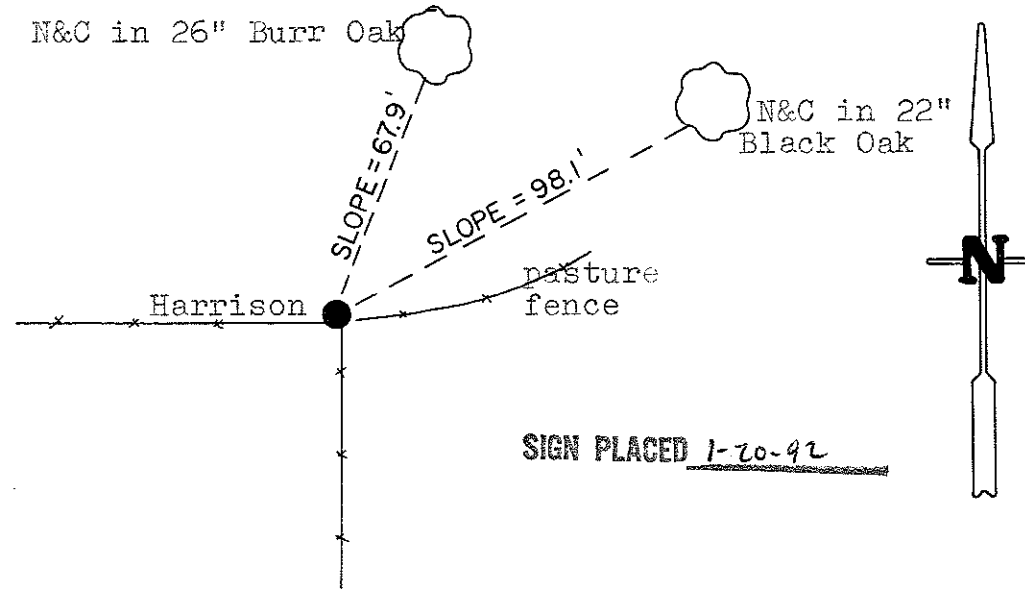
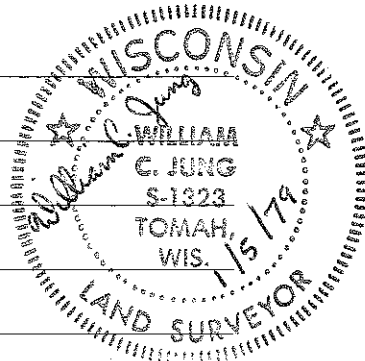
Crew Chief, County Surveyor's  
Office

Description of corner and witness monuments, references and accessories used to perpetuate the original or re-established location of this corner:  
Set Harrison Monument, flush.

Witnesses to corner location:

W. Jung

G. Dechant



COUNTY SURVEYOR FORM NO. 1

SURVEY CONTROL ORDER

Horizontal \_\_\_\_\_  
Vertical \_\_\_\_\_

Approved by: Harley A. Sime  
County Surveyor

WISCONSIN COORDINATE SYSTEM

Corner	East (X)	North (Y)	Elevation (Z)	Zone
Control Sta. Name				

City, Village or Town Leon  
County of Monroe