

CERTIFICATE

CERTIFIED LAND CORNER

No. 83

21604230000

I, Robert M. Lampman, do hereby certify that on the 15th day of September 1977, I found (evidence) (~~no evidence~~) of the NE corner of Section 26, T 16 N, R 4W Fourth Principal Meridian, and I re-established said corner according to the Wisconsin Statutes as shown and described hereon.

Dated this 2nd day of Dec. 1977.

Robert M. Lampman
LAMPMAN & ASSOCIATES
 Title

History of original corner establishment:

Sub-division of Township 16 North of Range 4 West commenced February 5, 1847 completed February 20, 1847. Henry Maddin, Deputy Surveyor under the direction of Geo. W. Jones, Surveyor General.

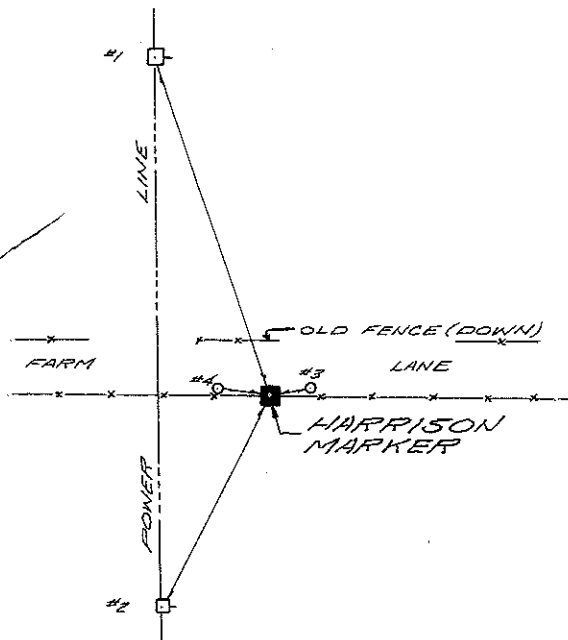
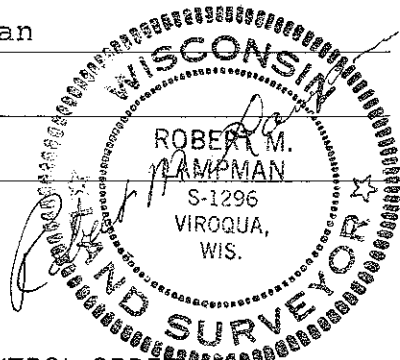
Description of corner evidence found:

After having run extensive control traverse in Section 26 and made extensive search for original corner and bearing trees in areas designated by recorded distance of original survey and or resurvey and having done the same in areas of occupation of said corner, I set corner at a prorated distance from North West corner by use of Occupation evidence.

Description of corner and witness monuments, references and accessories used to perpetuate the original or re-established location of this corner:

Witnesses to corner location:

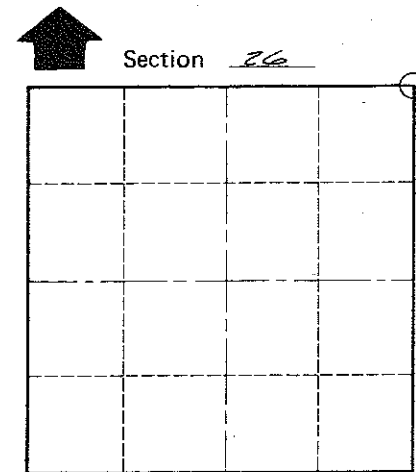
Ronald Hayden - Crew Chief
Randy Peterson
Jay Hoffman



- TIES
- 1 POWER POLE N18°W 186.32'
 - 2 POWER POLE S27°W 120.78'
 - 3 1" IRON PIPE EAST 17.05'
 - 4 1" IRON PIPE WEST 14.74'

SIGN PLACED 1-20-92

NOTE: SET RR SPIKE IN POWER POLES



O = LOCATION CORNER

T 16 N R 4 W
 WISCONSIN

COUNTY SURVEYOR FORM NO. 1

SURVEY CONTROL ORDER

Horizontal	_____
Vertical	_____

WISCONSIN COORDINATE SYSTEM

Corner	East (X)	North (Y)	Elevation (Z)	Zone
Control Sta. Name				

City, Village or Town LEON

County of MONROE