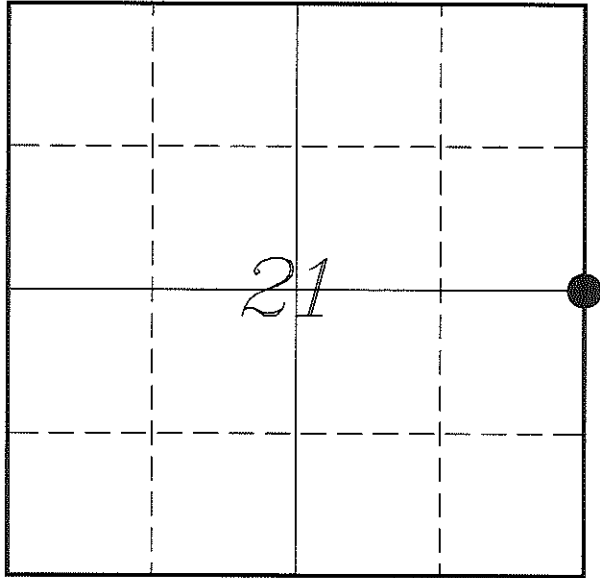


U. S. PUBLIC LAND SURVEY MONUMENT RECORD

SECTION 21, T16N, R4W, TOWN OF LEON  
MONROE COUNTY, WISCONSIN



MONROE COUNTY COORDINATE SYSTEM	
Northing	344969.362
Easting	615774.787
Datum	NAD 1983 (1991)
Elevation	
Datum	
TYPE OF LANDMARK:	
Set Harrison Monument	
BEARINGS ARE REFERENCED TO:	
Monroe County Coordinates	

LOCATION OF LANDMARK

Witnesses: Laurence E Johns III  
Larry Handschy

Date: 31 May 2013

Describe any record evidence, monument evidence, testimonial evidence or any other material evidence you considered and whether the monument was found or restored through acceptance of an obliterated evidence location.

No bearing trees of record were located.

I found a 1 1/4" iron rod within 1 foot of the computed location of Hefner's corner.

This location is 33.5' West and 6.2' South of the mid-point between the NE & SE Corners. There is a fence corner located about 85' East of this location. That location is 52.0' East and 1.3' North of the mid-point.

The fence makes a significant bend at the tree where Hefner placed his corner. This location is closer to the mid-point than the fence corner.

Since there are two separate surveys tied to this present corner and the occupation that is present does not appear very reliable. I accepted the location of the 1 1/4" iron rod and replaced it with a Harrison Monument.

Describe or show any material discrepancy between the location of the restored corner and that of the corner previously restored or re-established.

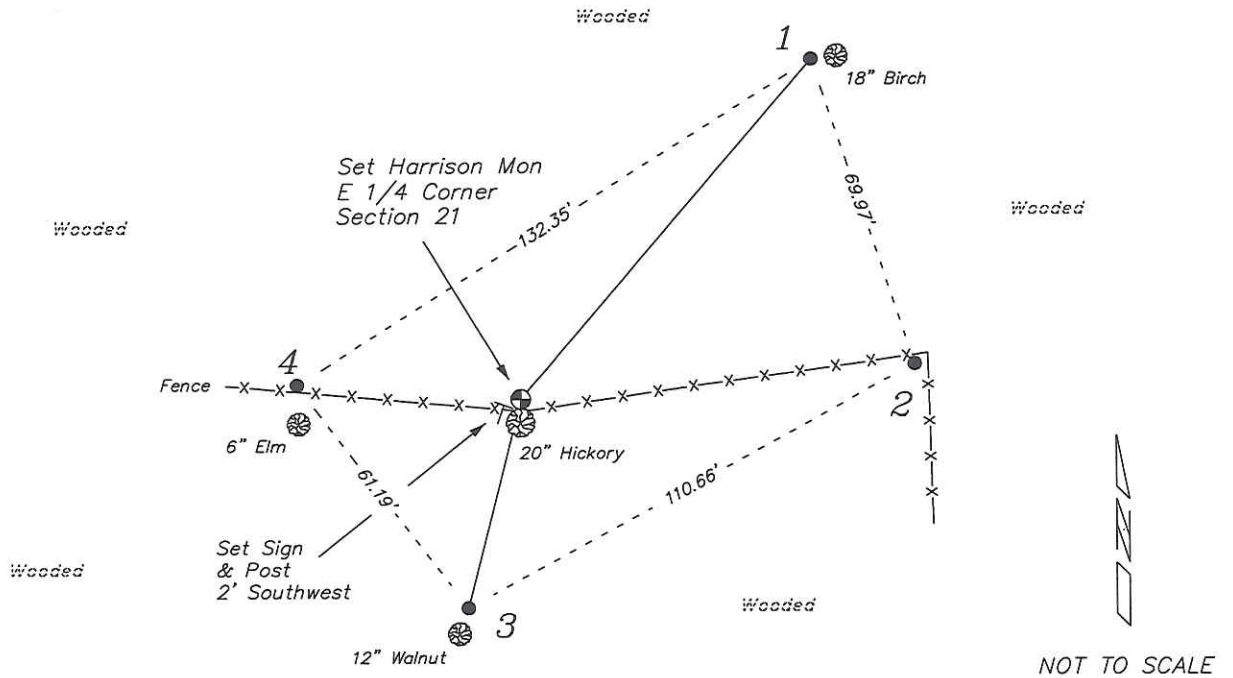
Henry Maddin established this corner in February 1847.

Dwayne Hefner was at this corner, in August 2003, during a survey in Section 22. He shows that he set a Harrison Monument at this corner.

Stephen Solberg used this corner, in December 2006, during a survey in Section 21. He computed a section breakdown based on Hefner's survey.

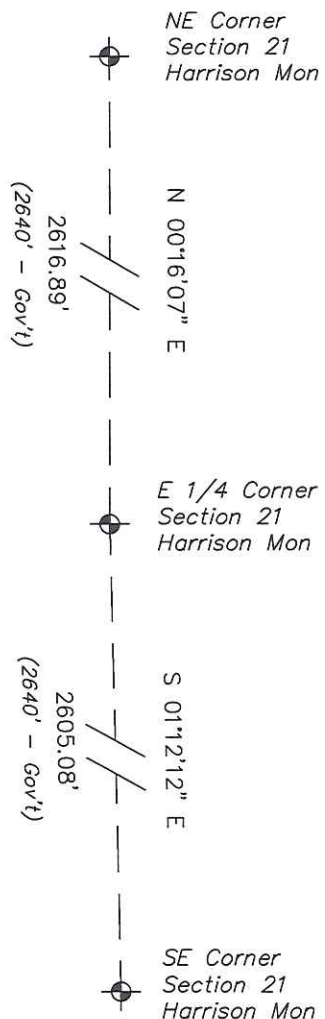
## RECORD OF DURABLE WITNESS MONUMENTS

NO	DESCRIPTION	BEARING	DISTANCE
1	Set 3/4" x 18" Iron Rod 1' West of a 18" Birch	N 40°36'43" E	97.29'
2	Set 3/4" x 18" Iron Rod At Fence Corner	N 84°59'40" E	85.82'
3	Set 3/4" x 18" Iron Rod 1' North of a 12" Walnut	S 14°17'23" W	47.04'
4	Set 3/4" x 18" Iron Rod In Fence Line - 4' North of a 6" Elm	N 86°14'40" W	48.67'



## PLAN VIEW DRAWING OF REFERENCE TIES

Map Showing Distance And Direction To Other Public Land Survey  
Corners Used For Re-Establishing The Corner



I, Laurence E Johns III RLS 2804, Registered Land Surveyor, hereby certify that the corner location shown on this record was determined by me or under my direction and control, and that this U.S. Public Land Survey Monument Record is correct and complete to the best of my knowledge and belief.

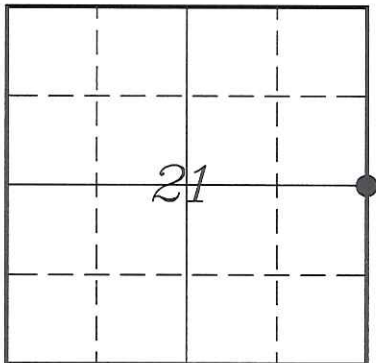
*Laurence E. Johns III*  
 Laurence E Johns III, RLS 2804  
 Eagle Ridge Surveying, LLC  
 PO Box 213  
 Wilton, Wisconsin  
 2 June 2013

---

U. S. PUBLIC LAND SURVEY MONUMENT RECORD  
'Addendum for Corner Photographs'

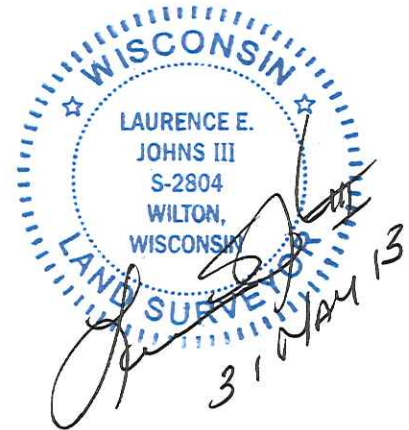
---

SECTION 21, T16N, R4W, TOWN OF LEON  
MONROE COUNTY, WISCONSIN



LOCATION OF LANDMARK

Date:  
31 May 2013



Taken from the North, at a Distance of about 20'