

CERTIFICATE

I, Rodney H. Maxwell, do hereby certify that on the 30th day of June, 2005, I found ~~(evidence)~~ (no evidence) of the N 1/4 corner of Section 28, T.16N., R.4W., Fourth Principle Meridian, and I re-established said corner according to the Wisconsin Statutes as shown and described hereon.

Dated this 30th day of June, 2005.

Rodney H. Maxwell

Rodney H. Maxwell
MAXWELL & ASSOCIATES
LAND SURVEYING
PO Box 213
Wilton, WI 54670

CERTIFIED LAND CORNER

No. 88

21604210020

History of corner establishment since Original Government Survey

Fred Holden was here in Dec of 1910 and set a Stone with a 'X' on top.

Description of corner evidence found:

After several tries and diligent searching, Holden's stone was not found. The stone may have been washed out by the creek through erosion. The creek was not mentioned in the original notes. Since no other evidence was found of the original corner. The split between the NE and NW Corners was used.

Description of corner and witness monuments, references and accessories used to perpetuate the original or re-established location of this corner:

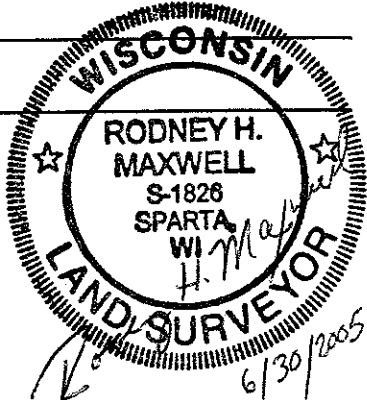
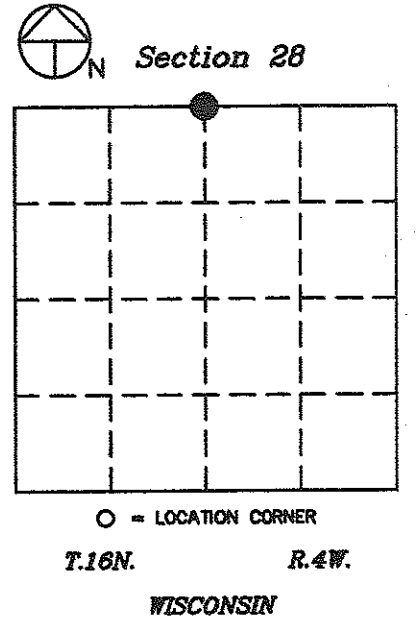
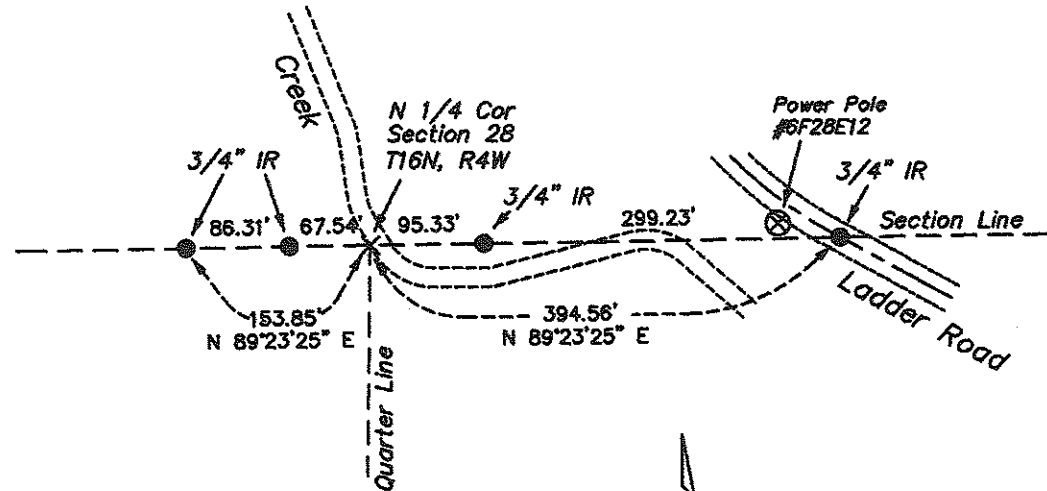
The corner could not be set, because it falls on the side of a steep bank.

Witness to corner location:

Rodney H. Maxwell

Laurence E. Johns III

Larry Hanschy



No Scale

WISCONSIN COORDINATE SYSTEM

SURVEY CONTROL ORDER

Horizontal	
Vertical	
Corner	
Control Sta. Name	

Corner	East (X)	North (Y)	Elevation (Z)	Zone
Control Sta. Name				

City, Village or Town Leon
County of Monroe

COUNTY SURVEYOR FORM NO. 1