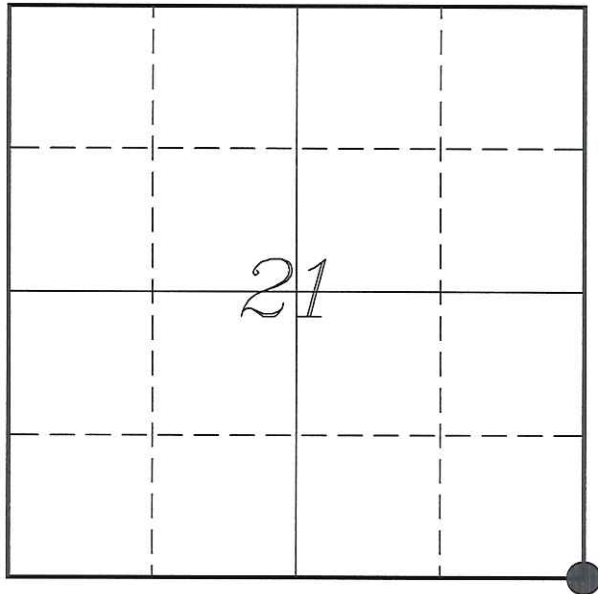


U. S. PUBLIC LAND SURVEY MONUMENT RECORD

SECTION 21, T16N, R4W, TOWN OF LEON
MONROE COUNTY, WISCONSIN



LOCATION OF LANDMARK

MONROE COUNTY COORDINATE SYSTEM	
Northing	342364.927
Easting	615829.521
Datum	NAD 1983 (1991)
Elevation	
Datum	
TYPE OF LANDMARK:	
Existing Harrison Monument	
BEARINGS ARE REFERENCED TO:	
Monroe County Coordinates	

Witnesses: Laurence E Johns III

Date: 13 October 2013

Describe any record evidence, monument evidence, testimonial evidence or any other material evidence you considered and whether the monument was found or restored through acceptance of an obliterated evidence location.

No bearing trees of record were located.

I found the Harrison Monument shown on previous surveys. It is not known when the Harrison was set. I do know it was not there in 1999, but was in 2005. Schmitz stated to me that he did not set it.

I did not find the stone mentioned by Holden. I recall in 1999, when working for Maxwell, that we looked at that time for any remains of a stone.

The Harrison Monument at this corner is located at apparent occupation. Distances to other corners support this location.

I accepted this monument as the best available evidence of the original government corner and set 4 ties as shown.

Describe or show any material discrepancy between the location of the restored corner and that of the corner previously restored or re-established.

Henry Maddin established this corner in February 1847.

Fred Holden was at this corner, in July 1910, during a survey in Section 21. He shows he found the original government corner. He also noted that there was a stone set by an earlier surveyor.

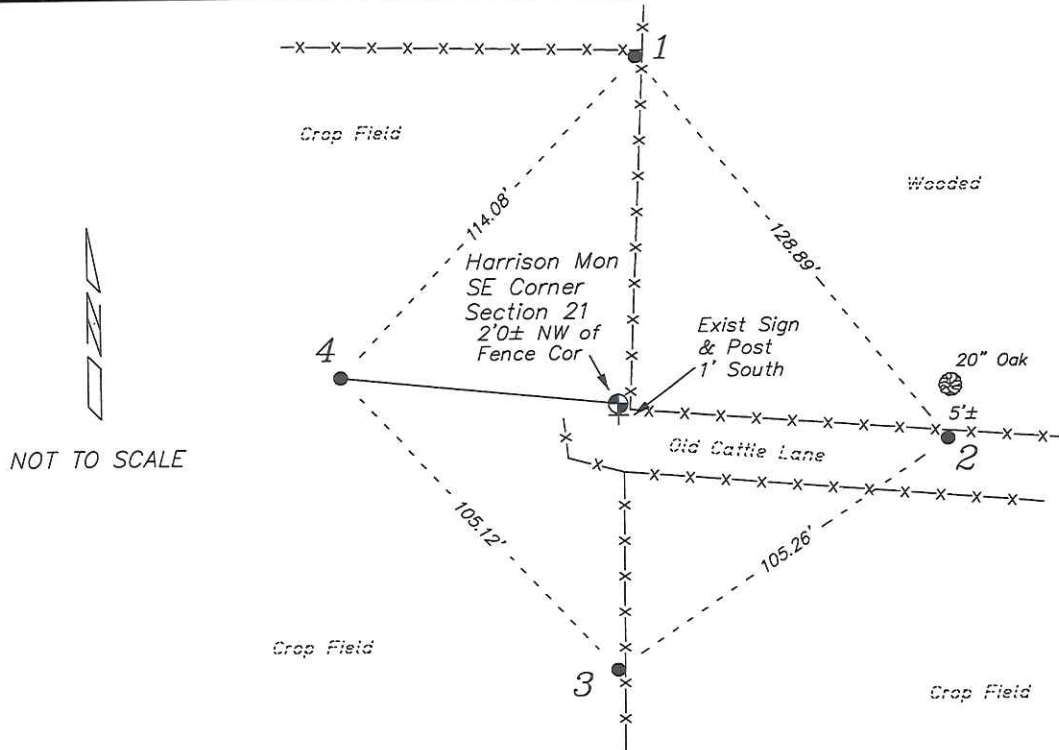
Jonathan Schmitz was at this corner, in July 2005, during a survey in Section 28. He shows that he found a Harrison Monument at this corner.

Stephen Solberg was at this corner, in December 2006, during a survey in Section 21. He shows that he found a Harrison Monument at this corner.

Laurence Johns was at this corner, in May 2011, during a survey in Section 28. I show that I found a Harrison Monument at this corner.

RECORD OF DURABLE WITNESS MONUMENTS

NO	DESCRIPTION	BEARING	DISTANCE
1	Set 3/4" x 18" Iron Rod Southwest Side of Fence Corner	N 03°27'56" E	91.13'
2	Set 3/4" x 18" Iron Rod In Fence - 5' South of a 20" Oak	S 83°27'07" E	86.38'
3	Set 3/4" x 18" Iron Rod In Fence Line	S 00°40'13" W	69.65'
4	Set 3/4" x 18" Iron Rod In Field - 12" Below Surface	N 84°05'19" W	72.63'



PLAN VIEW DRAWING OF REFERENCE TIES

Map Showing Distance And Direction To Other Public Land Survey
Corners Used For Re-Establishing The Corner

