

CERTIFICATE

CERTIFIED LAND CORNER

No. 758

21604202020

I, Garold A. Sime, do hereby certify that on the 27th day of June 1980, I found ~~(evidence)~~ (no evidence) of the Center 1/4 corner of Section 20, T 16 N, R 4 W Fourth Principal Meridian, and I re-established said corner according to the Wisconsin Statutes as shown and described hereon.

History of corner establishment since Original Government Survey

None

Description of corner evidence found:

No good evidence available. Set corner by law.

Dated this 8 day of Sept. 1980.

Garold A. Sime

Garold A. Sime, R.L.S. S-1261
Title



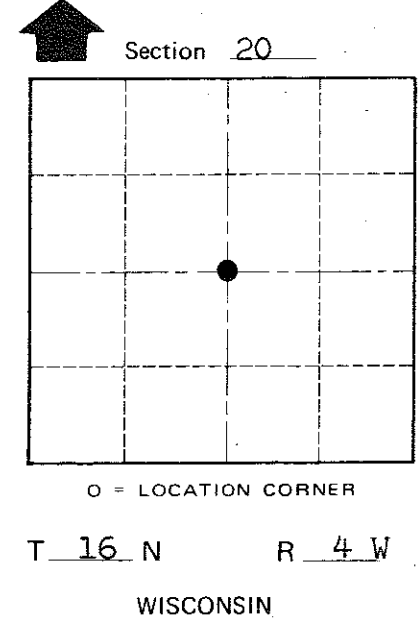
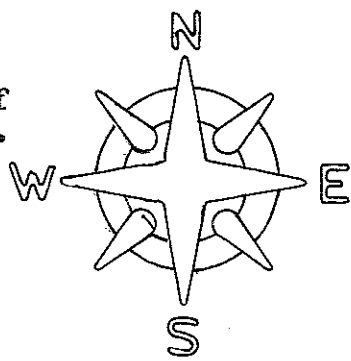
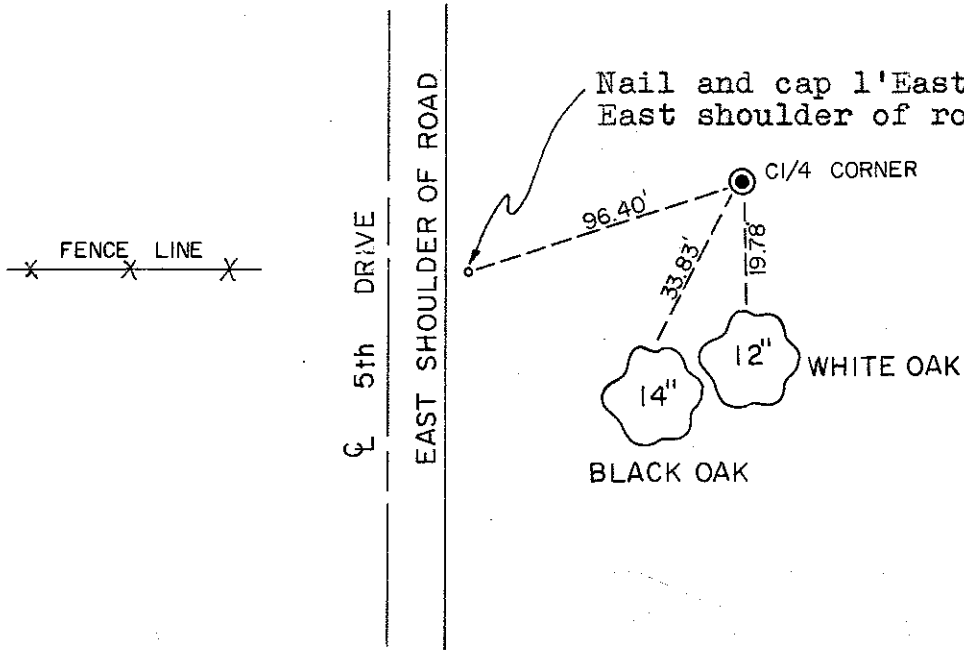
Approved: **HARLEY A. SIME**
MONROE CO. SURVEYOR

COUNTY SURVEYOR FORM NO. 1

Description of corner and witness monuments, references and accessories used to perpetuate the original or re-established location of this corner:

Witnesses to corner location:

- G. Sime
- C. Pietz
- T. Tormoen



SURVEY CONTROL ORDER

Horizontal	_____
Vertical	_____

WISCONSIN COORDINATE SYSTEM

Corner	East (X)	North (Y)	Elevation (Z)	Zone
Control Sta. Name				

~~City, Village or Town of~~ Leon
County of Monroe
Wisconsin