

21604202000

I, Garold A. Sime, do hereby certify that on the 8th day of September 1980, I found (evidence) (~~was~~) of the East 1/4 corner of Section 20, T 16 N, R 4 W Fourth Principal Meridian, and I re-established said corner according to the Wisconsin Statutes as shown and described hereon.

History of corner establishment since Original Government Survey

None

Description of corner evidence found:

Accepted the occupied fence corner as best available evidence.

Dated this 8th day of Sept. 19 80.

Garold A. Sime

Garold A. Sime, R.L.S. S-1261

Title

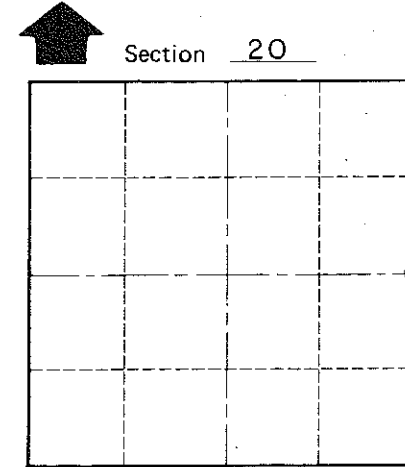
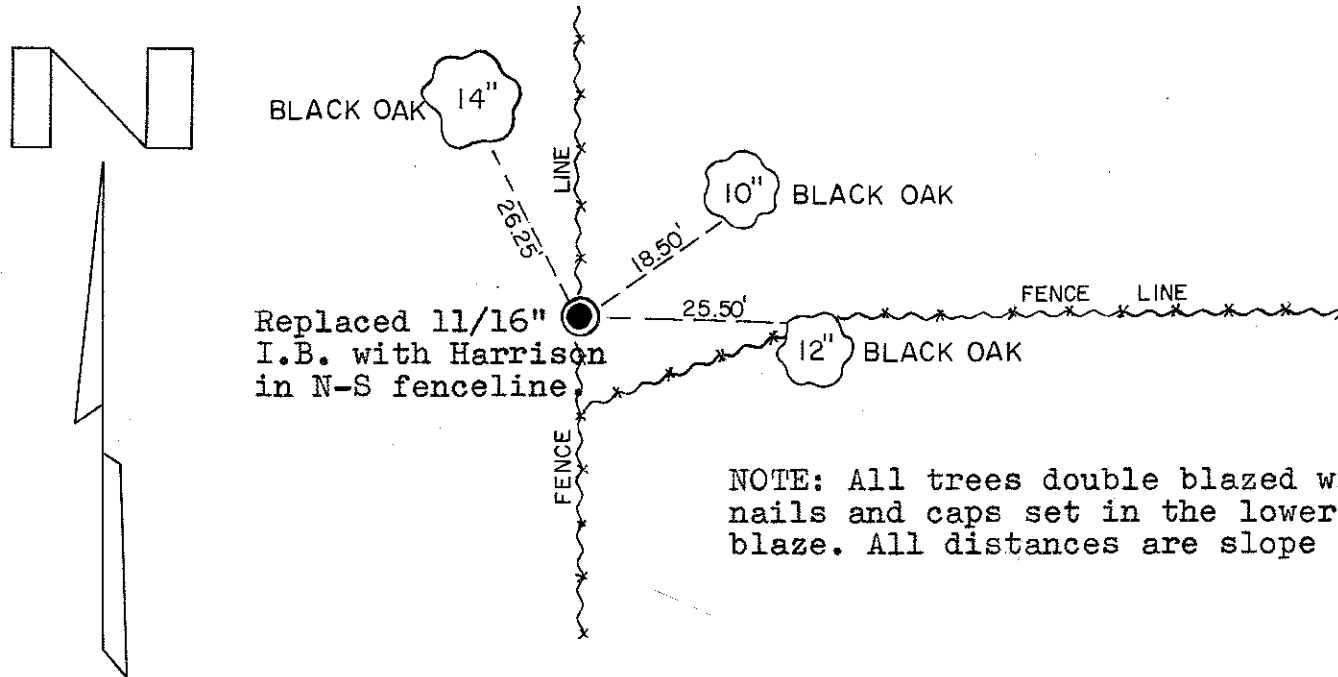
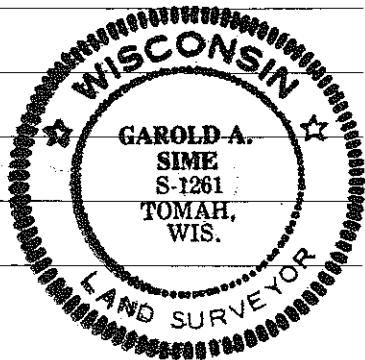
Approved: **HARLEY A. SIME**  
**MONROE CO. SURVEYOR**

Description of corner and witness monuments, references and accessories used to perpetuate the original or re-established location of this corner:

Witnesses to corner location:

B. Meyer

C. Dade



O = LOCATION CORNER

NOTE: All trees double blazed with nails and caps set in the lower blaze. All distances are slope chained.

T 16 N R 4 W

WISCONSIN

COUNTY SURVEYOR FORM NO. 1

SURVEY CONTROL ORDER

Horizontal	_____
Vertical	_____

WISCONSIN COORDINATE SYSTEM

Corner	East (X)	North (Y)	Elevation (Z)	Zone
Control Sta. Name				

~~City, Village or Town~~ of Leon

County of Monroe  
Wisconsin