

21604200000

I, Garold A. Sime, do hereby certify that on the 24th day of June 1980, I found (evidence) (~~marked~~) of the SE corner of Section 20, T16 N, R 4 W Fourth Principal Meridian, and I re-established said corner according to the Wisconsin Statutes as shown and described hereon.

History of corner establishment since Original Government Survey

Fred Holden was at this corner in June of 1910.

Description of corner evidence found:

An unrecorded iron monument was found at this corner. It appears to be some kind of iron tongue or hitch. It is 14'+ north of fence line to the west and in projection of the fence line to the southeast. It is unknown to me who set the corner, but was accepted as the corner. This monument is solidly embedded in the ground so I did not replace it with a Harrison.

Dated this 12th day of March 1981.

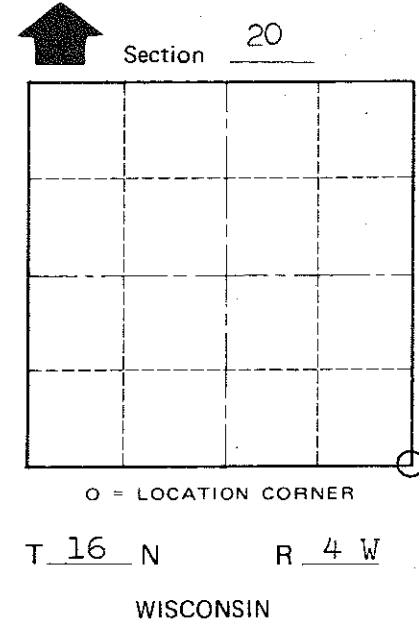
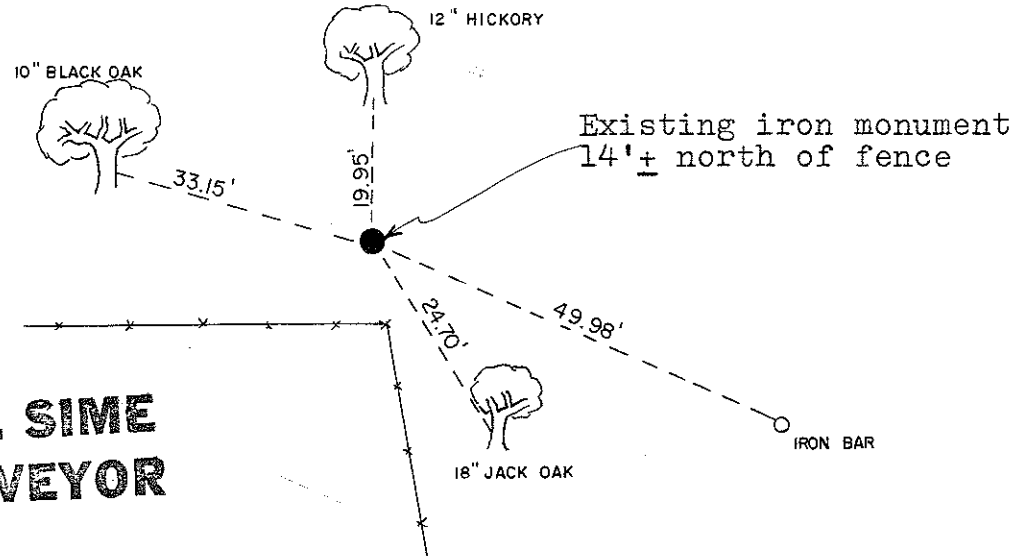
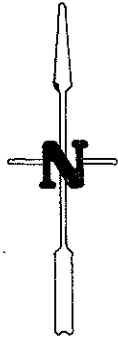
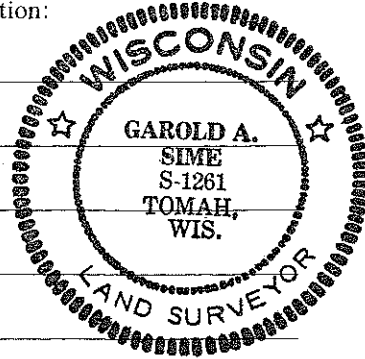
Garold A. Sime

Garold A. Sime, R.L.S. 1261  
Title

Description of corner and witness monuments, references and accessories used to perpetuate the original or re-established location of this corner:

Witnesses to corner location:

G. Sime  
B. Meyer  
T. Tormoen



Approved: **HARLEY A. SIME**  
**MONROE CO. SURVEYOR**

SURVEY CONTROL ORDER

Horizontal \_\_\_\_\_  
Vertical \_\_\_\_\_

WISCONSIN COORDINATE SYSTEM

Corner	East (X)	North (Y)	Elevation (Z)	Zone
Control Sta. Name				

~~City, Village or~~ Town Leon  
County of Monroe

COUNTY SURVEYOR FORM NO. 1