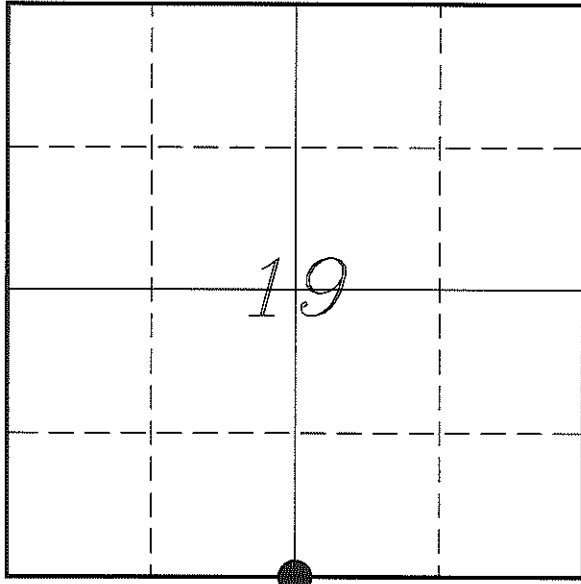


---

# U. S. PUBLIC LAND SURVEY MONUMENT RECORD

---

## SECTION 19, T16N, R4W, TOWN OF LEON MONROE COUNTY, WISCONSIN



*LOCATION OF LANDMARK*

*Witnesses:* Laurence E Johns III  
Larry Handschy

*Date:* 31 May 2013

<i>MONROE COUNTY COORDINATE SYSTEM</i>	
<i>Northing</i>	<i>342257.940</i>
<i>Easting</i>	<i>602723.511</i>
<i>Datum</i>	<i>NAD 1983 (1991)</i>
<i>Elevation</i>	
<i>Datum</i>	
<i>TYPE OF LANDMARK:</i>	
<i>Set Harrison Monument</i>	
<i>BEARINGS ARE REFERENCED TO:</i>	
<i>Monroe County Coordinates</i>	

---

*Describe any record evidence, monument evidence, testimonial evidence or any other material evidence you considered and whether the monument was found or restored through acceptance of an obliterated evidence location.*

No bearing trees of record were located.

I found Maxwell's 3/4" iron rod on the South side of the corner post. His survey shows that the '40' fence corner to the West is in line with this location and the SW Corner of the section.

This location is 51.0' West and 26.0' South of the proratinal location.

I found no evidence to dispute the location of this corner and this location has been used as the occupational corner for many years.

I accepted this location as the best available evidence of the original government corner and replaced the 3/4" iron rod with a Harrison Monument.

---

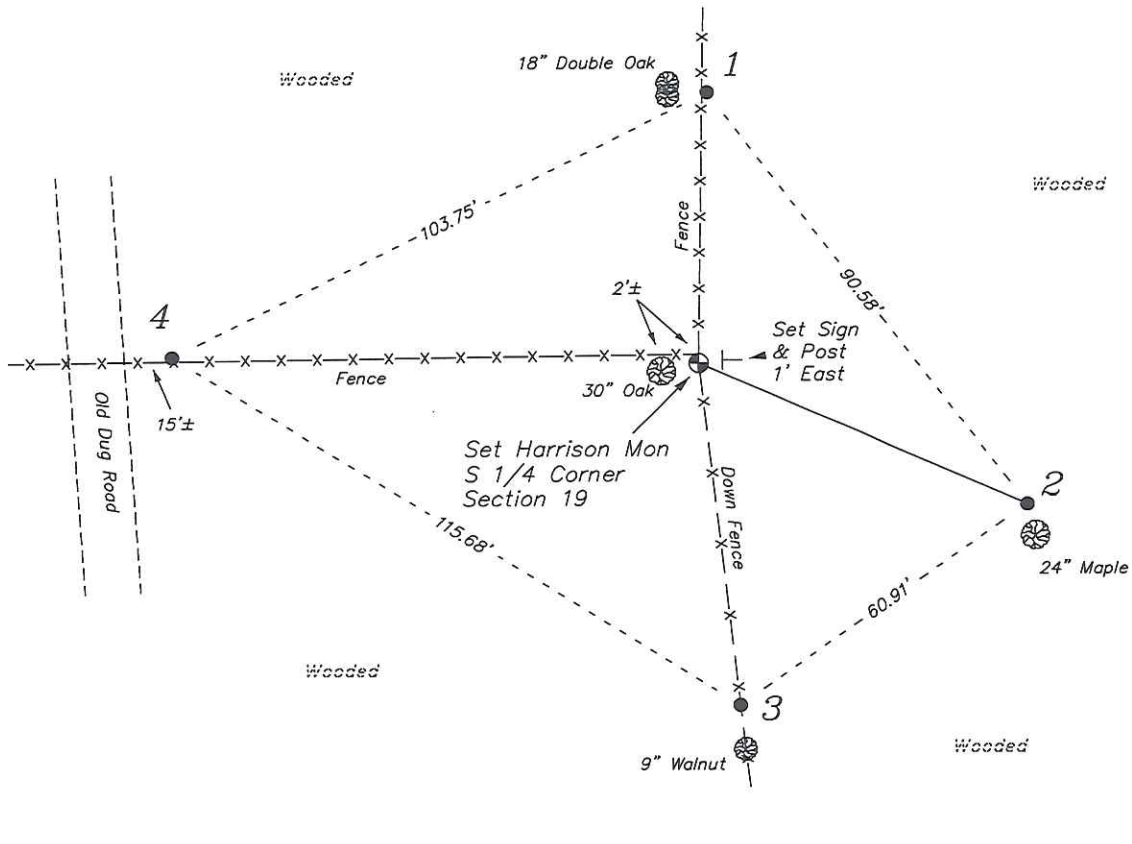
*Describe or show any material discrepancy between the location of the restored corner and that of the corner previously restored or re-established.*

Henry Maddin established this corner in February 1847.

Rodney Maxwell was at this corner, in January 1999, during a survey in Section 19. He shows that he set a 3/4" iron rod at a fence corner.

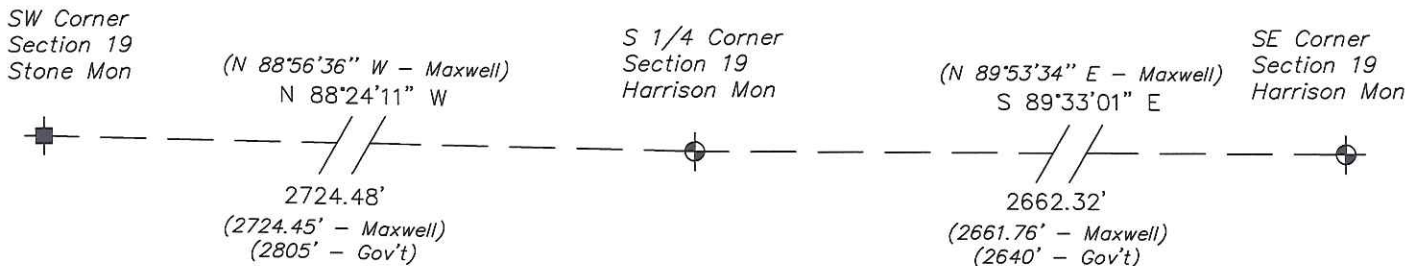
# RECORD OF DURABLE WITNESS MONUMENTS

NO	DESCRIPTION	BEARING	DISTANCE
1	Set 3/4" x 18" Iron Rod In Fence Line - 4' East of 18" Double Oak	N 02°06'42" E	47.08'
2	Set 3/4" x 18" Iron Rod 2' North of a 24" Maple	S 66°25'34" E	62.05'
3	Set 3/4" x 18" Iron Rod In Down Fence - 3' North of a 9" Walnut	S 06°35'14" E	60.01'
4	Set 3/4" x 18" Iron Rod In Fence Line - 15' East of a Dug Road	N 89°08'24" W	91.43'



## PLAN VIEW DRAWING OF REFERENCE TIES

Map Showing Distance And Direction To Other Public Land Survey  
Corners Used For Re-Establishing The Corner



I, Laurence E Johns III RLS 2804, Registered Land Surveyor, hereby certify that the corner location shown on this record was determined by me or under my direction and control, and that this U.S. Public Land Survey Monument Record is correct and complete to the best of my knowledge and belief.

*Laurence E Johns III*  
 Laurence E Johns III RLS 2804  
 Eagle Ridge Surveying, LLC  
 PO Box 213  
 Wilton, Wisconsin  
 2 June 2013

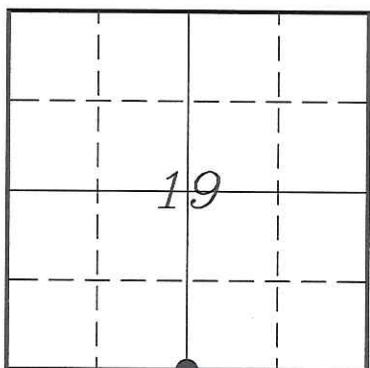


---

U. S. PUBLIC LAND SURVEY MONUMENT RECORD  
'Addendum for Corner Photographs'

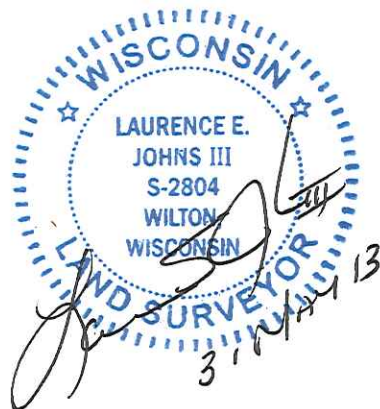
---

SECTION 19, T16N, R4W, TOWN OF LEON  
MONROE COUNTY, WISCONSIN



LOCATION OF LANDMARK

Date:  
31 May 2013



Taken from the Northwest, at about a 20' Distance