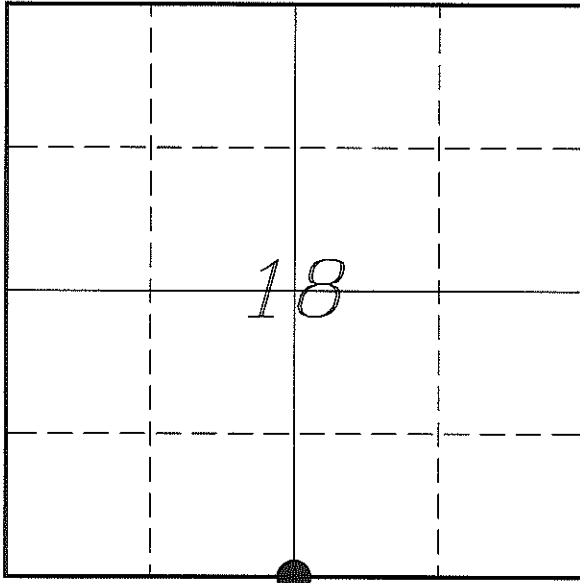

U. S. PUBLIC LAND SURVEY MONUMENT RECORD

SECTION 18, T16N, R4W, TOWN OF LEON MONROE COUNTY, WISCONSIN



LOCATION OF LANDMARK

Witnesses: Laurence E Johns III
Larry Handschy

Date: 4 July 2013

<i>MONROE COUNTY COORDINATE SYSTEM</i>	
<i>Northing</i>	<i>347507.368</i>
<i>Easting</i>	<i>602785.548</i>
<i>Datum</i>	<i>NAD 1983 (1991)</i>
<i>Elevation</i>	
<i>Datum</i>	
<i>TYPE OF LANDMARK:</i>	
<i>Set Harrison Monument</i>	
<i>BEARINGS ARE REFERENCED TO:</i>	
<i>Monroe County Coordinates</i>	

Describe any record evidence, monument evidence, testimonial evidence or any other material evidence you considered and whether the monument was found or restored through acceptance of an obliterated evidence location.

No bearing trees of record were located.

This corner lands on a side slope in a densely wooded area. There is no occupation anywhere near this corner.

Harding's map has no information shown to determine the location of this corner. I used information provided by Chris Fechner, now owner of the records belonging to Harding. I computed the location of the corner shown on Harding's map. At this location I found a Harrison monument lying on the ground next to a tree. Harding must not have finished setting the monument.

I found no evidence to contradict his location, so I set the monument at his location and accepted it as the best available evidence of the original government corner.

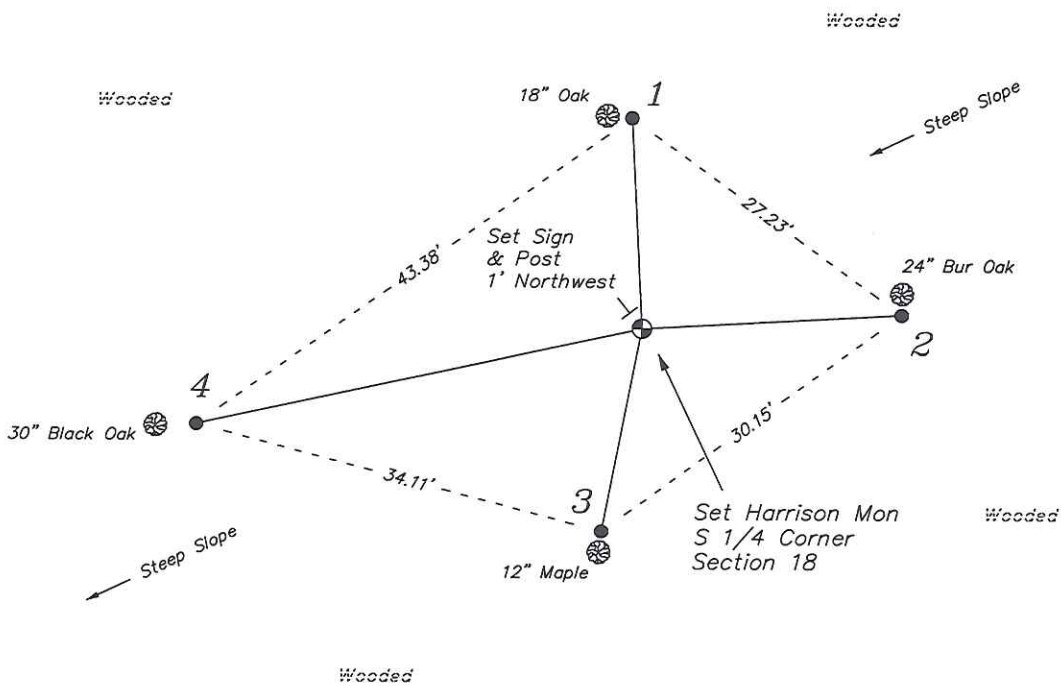
Describe or show any material discrepancy between the location of the restored corner and that of the corner previously restored or re-established.

Henry Maddin established this corner in February 1847.

Michael Harding was at this corner, in April 1999, during a survey in Section 7 & 18. He shows that he set a Harrison Monument at this corner.

RECORD OF DURABLE WITNESS MONUMENTS

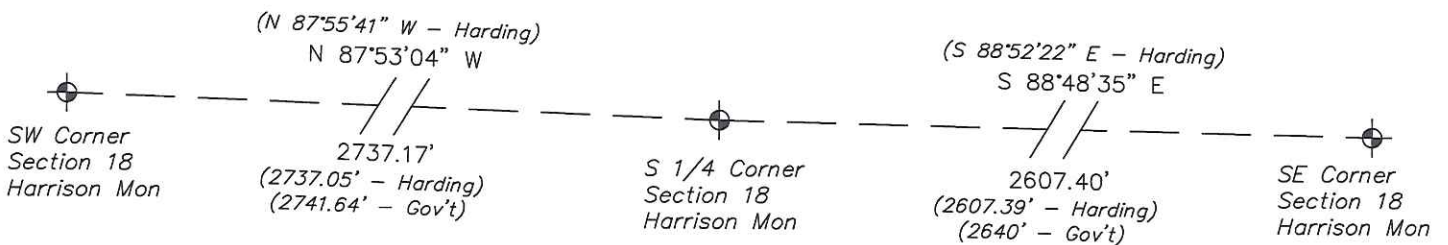
NO	DESCRIPTION	BEARING	DISTANCE
1	Set 3/4" x 18" Iron Rod 1' East of a 18" Oak	N 02°52'21" W	17.26'
2	Set 3/4" x 18" Iron Rod 1' South of a 24" Bur Oak	N 86°48'34" E	21.16'
3	Set 3/4" x 18" Iron Rod 1' North of a 12" Maple	S 11°01'00" W	16.90'
4	Set 3/4" x 18" Iron Rod 3' East of a 30" Black Oak	S 77°40'34" W	37.07'



NOT TO SCALE

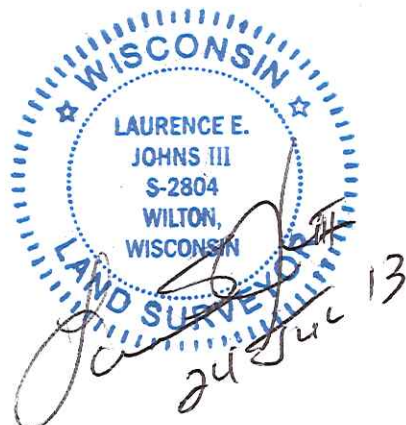
PLAN VIEW DRAWING OF REFERENCE TIES

Map Showing Distance And Direction To Other Public Land Survey
Corners Used For Re-Establishing The Corner



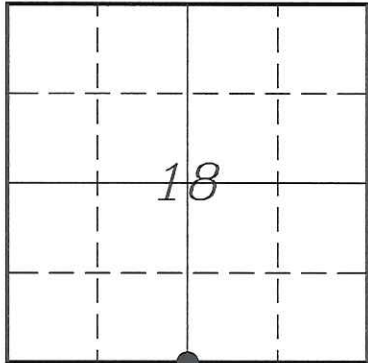
I, Laurence E Johns III RLS 2804, Registered Land Surveyor, hereby certify that the corner location shown on this record was determined by me or under my direction and control, and that this U.S. Public Land Survey Monument Record is correct and complete to the best of my knowledge and belief.

Laurence E. Johns III
 Laurence E Johns III RLS 2804
 Eagle Ridge Surveying, LLC
 PO Box 213
 Wilton, Wisconsin
 24 July 2013



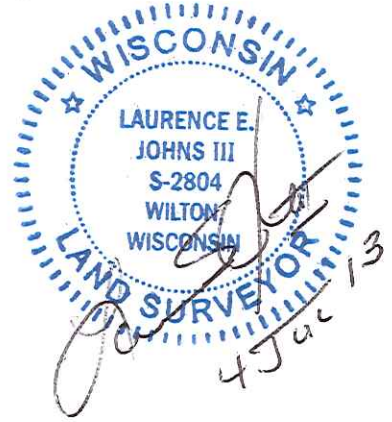
U. S. PUBLIC LAND SURVEY MONUMENT RECORD
'Addendum for Corner Photographs'

SECTION 18, T16N, R4W, TOWN OF LEON
MONROE COUNTY, WISCONSIN



LOCATION OF LANDMARK

Date:
4 July 2013



Taken from Tie #2, South Side of Tree



Taken from Corner, Looking East