

CERTIFIED LAND CORNER

CORNER # 54

CERTIFICATE

I, JONATHAN SCHMITZ RLS #2465, DO HEREBY CERTIFY THAT ON THE 23RD DAY OF SEPTEMBER 2004, I FOUND NO EVIDENCE OF THE WEST CORNER OF SECTION 18, T16N, R3W, FOURTH PRINCIPAL MERIDIAN, AND I REESTABLISHED SAID CORNER ACCORDING TO THE WISCONSIN STATUTES AS SHOWN AND DESCRIBED HEREON. DATED THIS 5TH DAY OF OCTOBER, 2004.

Jonathan Schmitz 12/06/04
JONATHAN SCHMITZ RLS #2465

HISTORY

NO KNOWN HISTORY OF THIS CORNER SINCE THE ORIGINAL SURVEY.

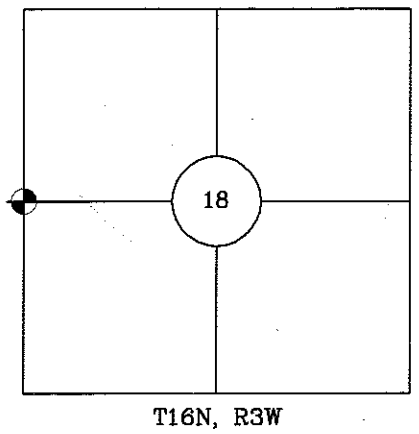
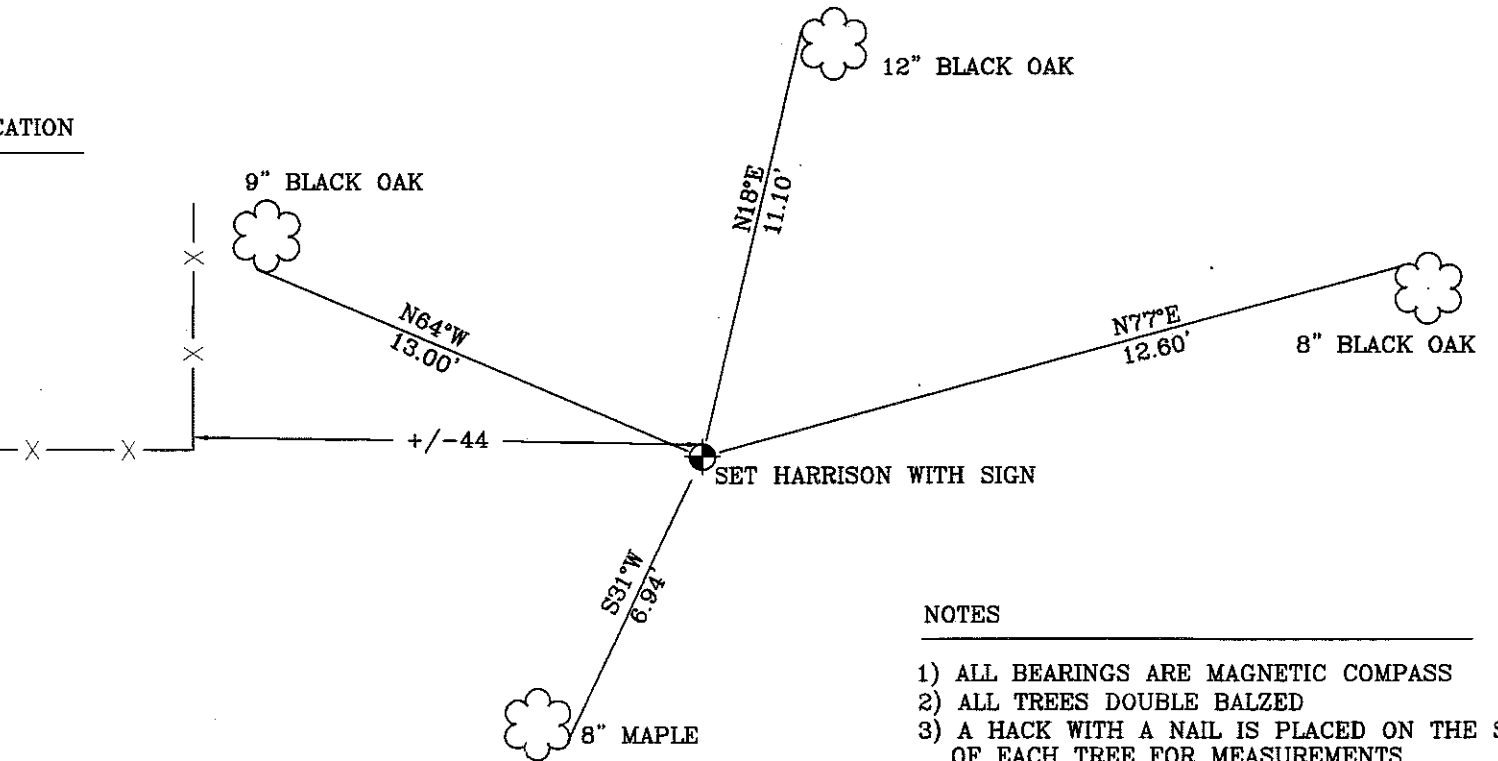
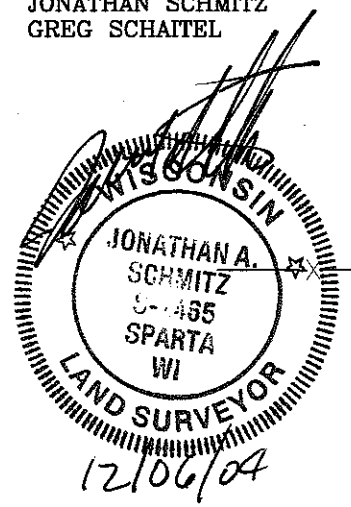
DESCRIPTION OF CORNER EVIDENCE FOUND

NO EVIDENCE OF THE ORIGINAL CORNER FOUND. SET CORNER AT SINGLE PROPORTIONATE MEASURE FROM THE EXISTING NORTHWEST AND SOUTHWEST CORNERS OF SECTION 18.

DESCRIPTION OF CORNER AND WITNESS MONUMENTS, REFERENCES AND ACCESSORIES USED TO PERPETUATE THE ORIGINAL OR REESTABLISHED LOCATION OF THIS CORNER.

WITNESSES TO CORNER LOCATION

JONATHAN SCHMITZ
GREG SCHAITEL



NOTES

- 1) ALL BEARINGS ARE MAGNETIC COMPASS
- 2) ALL TREES DOUBLE BALZED
- 3) A HACK WITH A NAIL IS PLACED ON THE SIDE OF EACH TREE FOR MEASUREMENTS

MONROE COUNTY COORDINATE

N:350,313.426
E:631,684.170

TOWN OF WELLS
MONROE COUNTY