

CERTIFICATE

CERTIFIED LAND CORNER

No. 62

21604130020

I, William C. Jung, do hereby certify that on the 13th day of April 1978, I found (evidence) (~~no evidence~~) of the N<sup>1</sup>/<sub>4</sub> corner of Section 24, T 16 N, R 4 W Fourth Principal Meridian, and I re-established said corner according to the Wisconsin Statutes as shown and described hereon.

History of original corner establishment:

Fred Holden set a stone at this corner in May of 1906.

Description of corner evidence found:

Found Holden's stone. Set iron bar over stone.

Dated this 5th day of Jan. 1979.

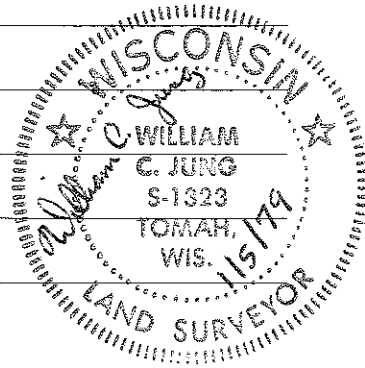
William C. Jung, R.L.S. 1323  
Crew Chief, County Surveyor's  
Office

Description of corner and witness monuments, references and accessories used to perpetuate the original or re-established location of this corner:

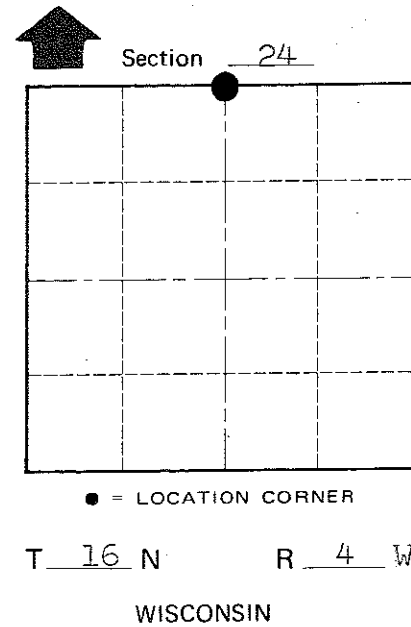
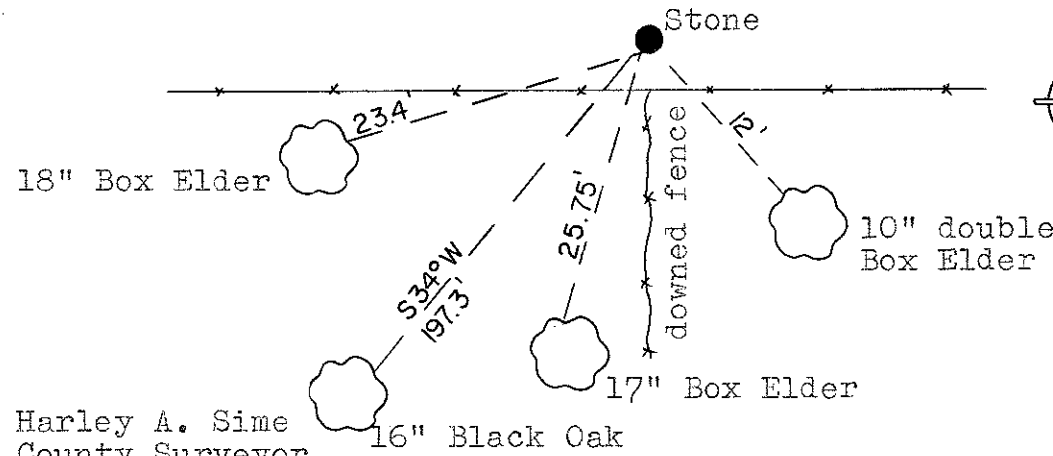
Set 1 1/4"x30" iron bar on south side of and over stone. Set steel post N. of stone.

Witnesses to corner location:

W. Jung  
G. Dechant



(All trees are double blazed and N&C's set)



COUNTY SURVEYOR FORM NO. 1

SURVEY CONTROL ORDER

Horizontal \_\_\_\_\_  
Vertical \_\_\_\_\_

Approved by: Harley A. Sime  
County Surveyor

WISCONSIN COORDINATE SYSTEM

Corner	East (X)	North (Y)	Elevation (Z)	Zone
Control Sta. Name				

City, Village or Town Leon  
County of Monroe