

21604120020

I, Mark R. Heidecke, do hereby certify that on the 29th day of May 19 80, I found ~~XXXXXX~~ (no evidence) of the South 1/4 corner of Section 12, T 16 N, R 4 W Fourth Principal Meridian, and I re-established said corner according to the Wisconsin Statutes as shown and described hereon.

Dated this 6th day of June 1980.

Mark R. Heidecke

Registered Land Surveyor

Title

History of corner establishment since Original Government Survey

There is no history of monument perpetuation since the Original U. S. Government Survey in Monroe County.

Description of corner evidence found:

A Harrison monument was set on a straight line and half-way between an Iron Sleigh Runner at the Southeast Corner of Section 12 and an old fence corner post at the Southwest Corner of Section 12.

Description of corner and witness monuments, references and accessories used to perpetuate the original or re-established location of this corner:

Witnesses to corner location:

Mark Heidecke

Lawrence Feddersen

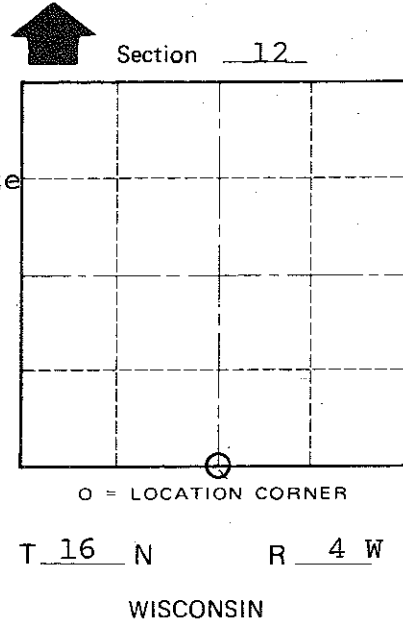
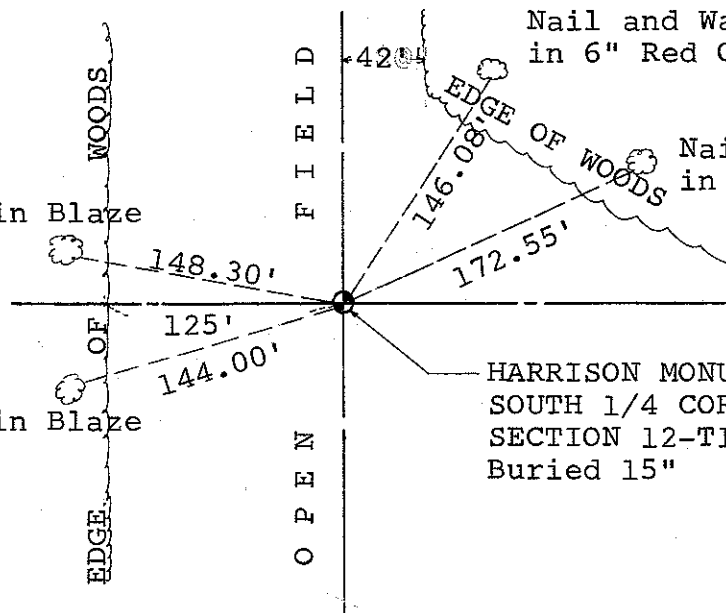
Nail and Washer in Blaze in 3" Red Oak

Nail and Washer in Blaze in 5" Red Oak

Nail and Washer in Blaze in 6" Red Oak

Nail and Washer in Blaze in 10" Red Oak

HARRISON MONUMENT SET AT SOUTH 1/4 CORNER SECTION 12-T16N-R4W Buried 15"



COUNTY SURVEYOR FORM NO. 1

SURVEY CONTROL ORDER

Horizontal	_____
Vertical	_____

WISCONSIN COORDINATE SYSTEM

Corner	East (X)	North (Y)	Elevation (Z)	Zone
Control Sta. Name				

~~XXXXXX~~ Town OF LEON
County of MONROE