

21604120000

I, Mark R. Heidecke, do hereby certify that on the 30th day of May 19 80, I found (evidence) (~~XXXXXXXX~~) of the Southeast corner of Section 12, T 16 N, R 4 W Fourth Principal Meridian, and I re-established said corner according to the Wisconsin Statutes as shown and described hereon.

Dated this 6th day of June 1980.

Mark R Heidecke

Registered Land Surveyor  
Title

History of corner establishment since Original Government Survey

After the Original U. S. Government Survey in Monroe County, Fred Holden ran the East line of Section 12- T16N - R4W and found the original corner and referenced it to a new bearing tree.

Description of corner evidence found:

A Harrison monument was set to replace an iron sleigh runner found at the base of a large old Red Oak stump in line of an old fence line to the West.

COUNTY SURVEYOR FORM NO. 1

Description of corner and witness monuments, references and accessories used to perpetuate the original or re-established location of this corner:

Witnesses to corner location:

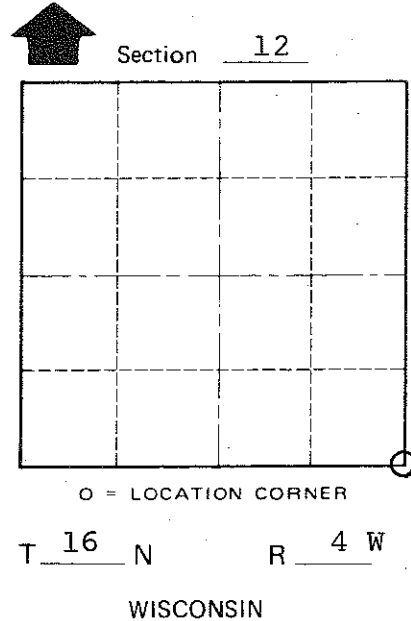
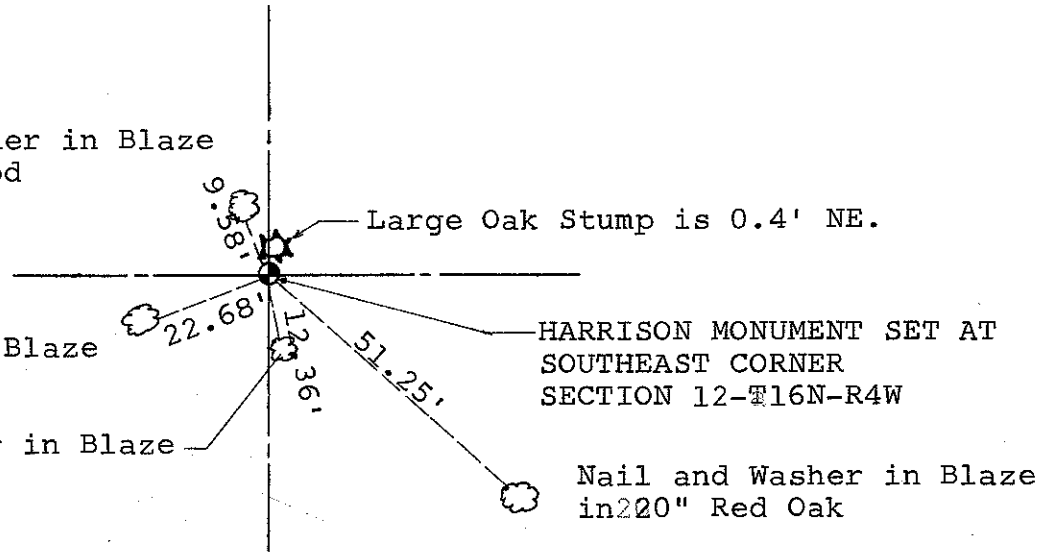
Mark Heidecke

Lawrence Feddersen

Nail and Washer in Blaze in 7" Basswood

Nail and Washer in Blaze in 9" White Oak

Nail and Washer in Blaze in 6" Elm



SURVEY CONTROL ORDER

Horizontal	_____
Vertical	_____

WISCONSIN COORDINATE SYSTEM

Corner	East (X)	North (Y)	Elevation (Z)	Zone
Control Sta. Name				

~~XXXXXXXXXX~~ Town OF LEON  
County of MONROE