

21604112000

I, Mark R. Heidecke, do hereby certify that on the 29th day of May 19 80, I found (evidence) ~~XXXXXXX~~ of the West 1/4 corner of Section 12, T 16 N, R 4 W Fourth Principal Meridian, and I re-established said corner according to the Wisconsin Statutes as shown and described hereon.

Dated this 6th day of June 19 80.

Mark R. Heidecke

Registered Land Surveyor
Title

History of corner establishment since Original Government Survey

After the Original U. S. Government Survey, Holden ran the Eastline of Section 11-T16N-R4W and found a monument set previously by Kenyon. He then referenced the corner to a White Oak-- S41°W-11 lks. (7.26").

Description of corner evidence found:

The reference tree mentioned by Holden was cut recently, but the stump remains intact. The monument was not found after an investigation of the area. A Harrison monument was set on a straight line and half-way between a 1" Axle at the Northwest Corner and the Southwest Corner of Section 12. This location fits closely the reference tie to the White Oak stump.

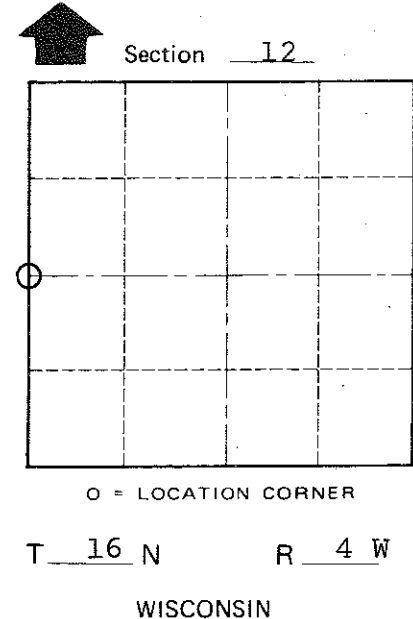
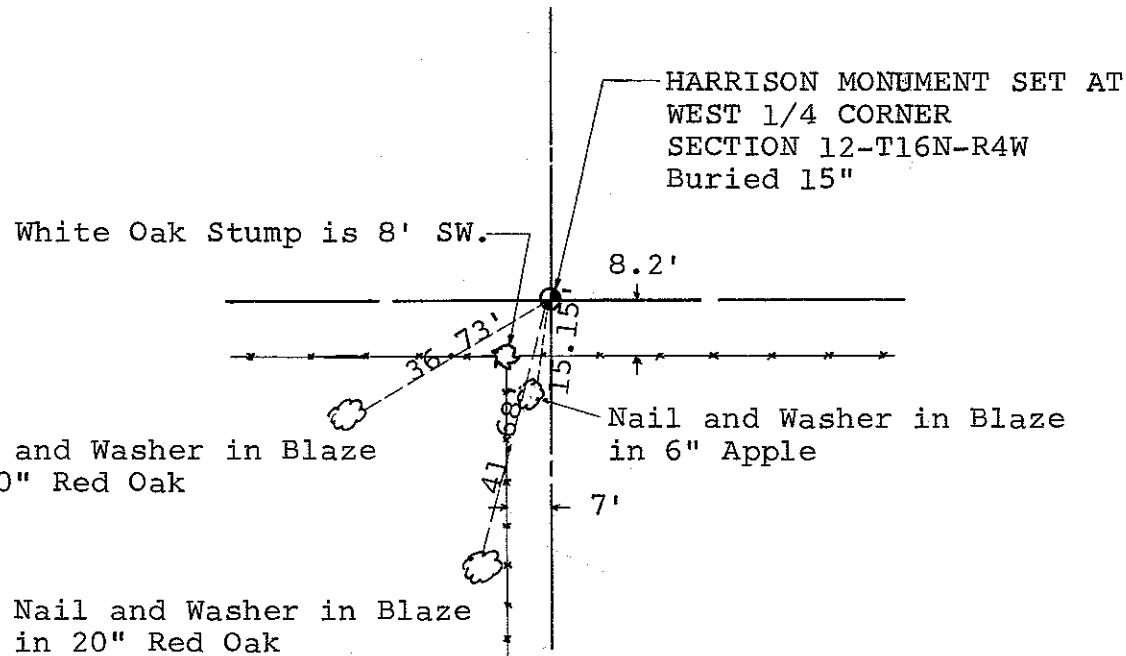
Description of corner and witness monuments, references and accessories used to perpetuate the original or re-established location of this corner:

Witnesses to corner location:

Mark Heidecke

Lawrence Feddersen

COUNTY SURVEYOR FORM NO. 1



SURVEY CONTROL ORDER

Horizontal	_____
Vertical	_____

Nail and Washer in Blaze in 20" Red Oak

WISCONSIN COORDINATE SYSTEM

Corner	East (X)	North (Y)	Elevation (Z)	Zone
Control Sta. Name				

~~City~~ or Town OF LEON
County of MONROE