

**U.S. PUBLIC LAND CORNER
MAINTENANCE**

38

Corner ID: E1/4 Sec. 10, T16N-R4W
21604102000

<u>DATE</u>	<u>CREW</u>	<u>MONUMENT INFO</u>
March 24, 2020	AL HOFF Gary L. Dechant	Existing 2½" iron pipe on west side of Little Lacrosse River, 1' below water level, was under rip-rap, approx. 70' east of STH "27", north of 20470 STH "27" Schmitz Tavern,

	<u>Bearing</u>	<u>Distance</u>
1) Set 3/4" round iron bar at NE corner of Schmitz Tavern paved parking lot	S5°56'07"E	82.03'
2) Set 3/4"x24" round iron bar, 3' east of speed limit sign east of STH "27"	S35°58'44"W	70.83'
3) Set 3/4"x24" round iron bar, down 6", 4' north of large double Cherry west of STH "27"	S67°07'27"W	120.20'
4) Existing 1¼" iron monument, down 15", 1986 tie, NW Cor. Blk 1 Leon	West	257.40'

Gary L. Dechant

March 31, 2020

I, Gary L. Dechant, do hereby certify that on the 9th day of December 19 86, I found ~~(evidence)~~ (no evidence) of the E 1/4 corner of Section 10, T 16 N, R 4W Fourth Principal Meridian, and I re-established said corner according to the Wisconsin Statutes as shown and described hereon.

Dated this 12th day of Dec. 1986.

Gary L. Dechant
Registered Land Surveyor, 1744
Title

History of corner establishment since Original Government Survey
Dahl was here in Oct. of 1871.
W. Kenyon set an iron shaft at this corner in 1885.
Fred Holden was here in 1910, but says nothing of finding Kenyon's iron shaft.

Description of corner evidence found:

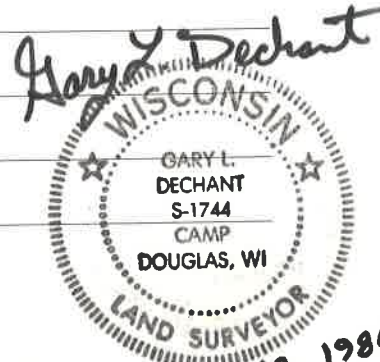
The Original Government Surveyor's call for this corner falling in the Little LaCrosse River. Kenyon does not mention if he set his iron shaft in the river, but from measurements taken from other monuments we found in the Village of Leon set by Kenyon, this corner still falls in the river. We looked and dug in the river, which was almost impossible to do any digging, and needless to say found absolutely nothing, except alot of garbage. This corner was reset by projecting a line through the W 1/4 corner of Section 10 and the NW corner of the Village of Leon and at the Plat distance of 257.40 feet East of the NW corner of said Village of Leon. This re-established corner fits the surveys done on the North side of the Village of Leon and fits reasonably well with the survey of 1966 by (over)

Description of corner and witness monuments, references and accessories used to perpetuate the original or re-established location of this corner:

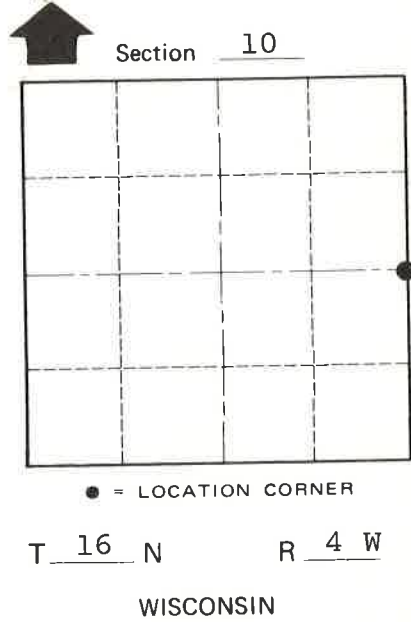
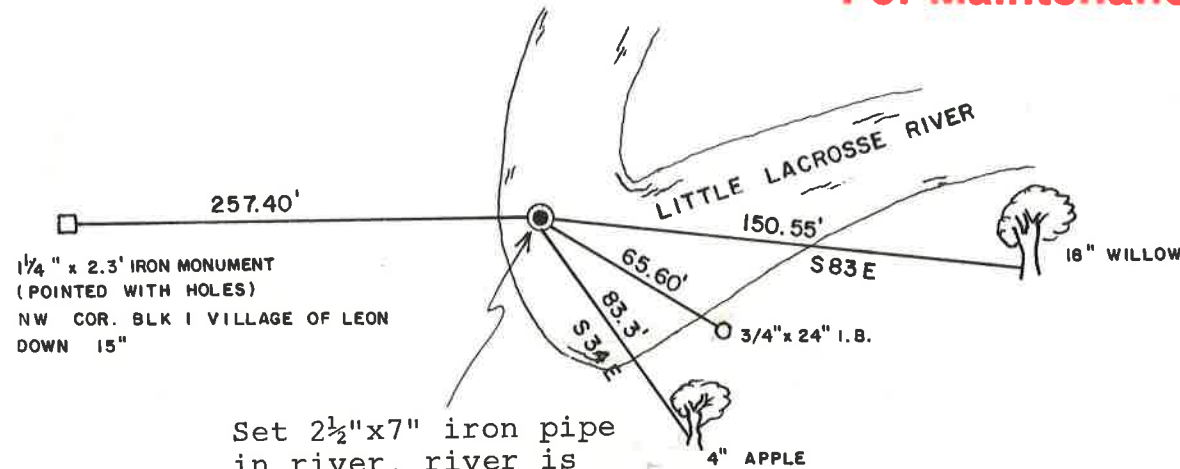
Witnesses to corner location:

David E. Madison

Gary L. Dechant



See Reverse Side For Maintenance



Set 2 1/2"x7" iron pipe in river, river is about 1' deep at this point.

(Trees are not blazed, but set N&C's)

COUNTY SURVEYOR FORM NO. 1

SURVEY CONTROL ORDER

Horizontal				
Vertical				
	WISCONSIN COORDINATE SYSTEM			
Corner	East (X)	North (Y)	Elevation (Z)	Zone
Control Sta. Name				

~~City, Village or~~ Town Leon
County of Monroe