

CERTIFICATE

CERTIFIED LAND CORNER

No. 46

**21604100020**

I, Gary L. Dechant, do hereby certify that on the 20th day of October 1986, I found ~~(no evidence)~~ (no evidence) of the N<sup>1</sup>/<sub>4</sub> corner of Section 15, T 16 N, R 4 W Fourth Principal Meridian, and I re-established said corner according to the Wisconsin Statutes as shown and described hereon.

Dated this 22nd day of Oct. 1986.

Gary L. Dechant

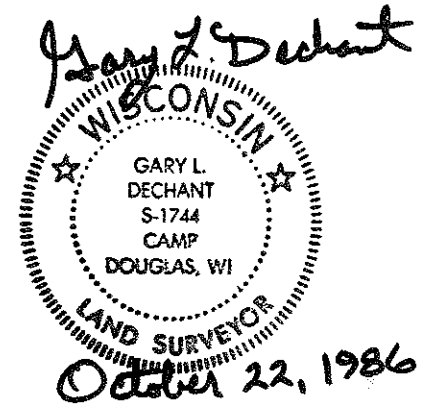
Registered Land Surveyor, S-1744  
Title

History of corner establishment since Original Government Survey

O.R. Dahl was here in October of 1871.

Description of corner evidence found:

Set by single proportionate measurement between section corners



COUNTY SURVEYOR FORM NO. 1

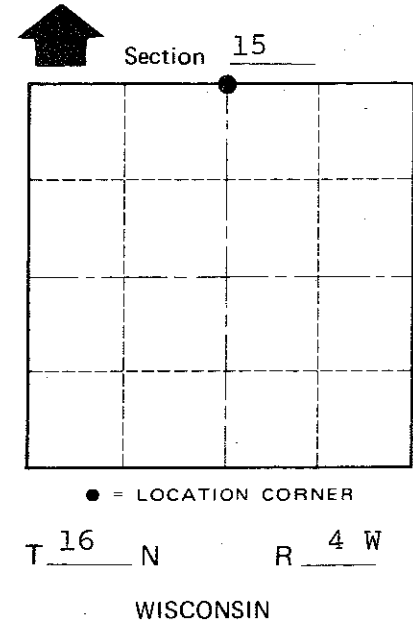
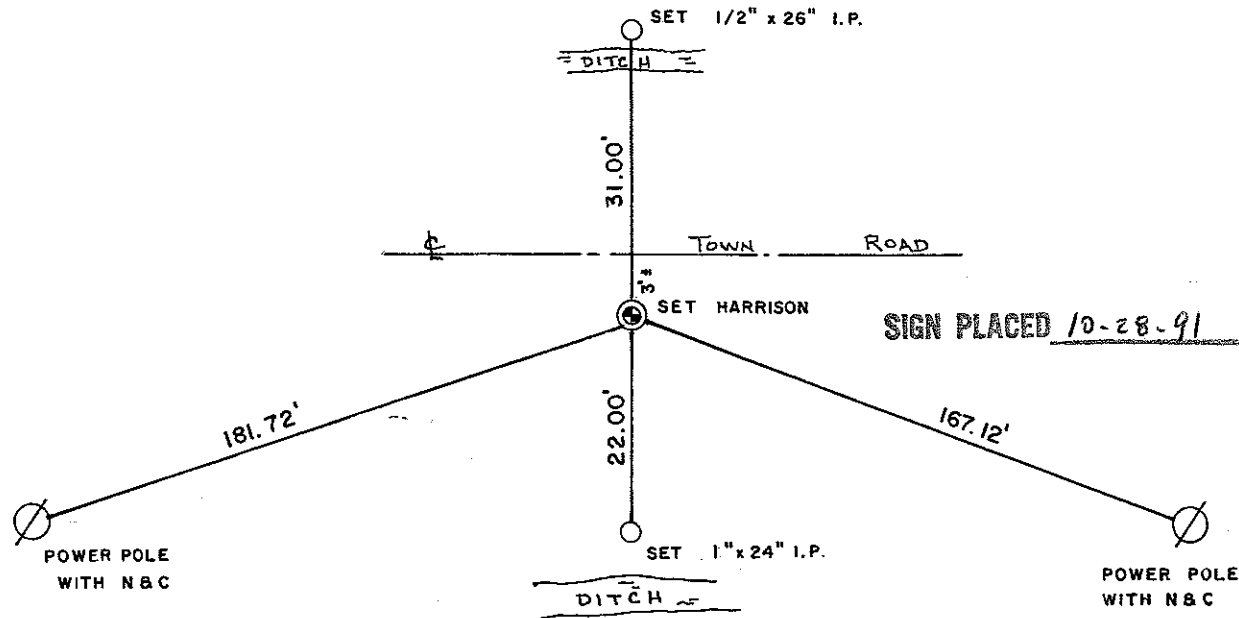
Description of corner and witness monuments, references and accessories used to perpetuate the original or re-established location of this corner:

Sunny, warm

Witnesses to corner location:

David E. Madison

Gary L. Dechant



SURVEY CONTROL ORDER

Horizontal	_____
Vertical	_____

WISCONSIN COORDINATE SYSTEM

Corner	East (X)	North (Y)	Elevation (Z)	Zone
Control Sta. Name				

~~City, Village or~~ Town Leon  
County of Monroe