

21604082000

I, Gary L. Dechant, do hereby certify that on the 24th day of Oct. 1994, I found (evidence) (no evidence) of the corner of Section 9, T 16 N, R 4 W Fourth Principal Meridian, and I re-established said corner according to the Wisconsin Statutes as shown and described hereon.

Dated this 14th day of Nov. 1994.

Gary L. Dechant

RLS 1744

Title

History of corner establishment since Original Government Survey

No known recorded history since the original government survey.

Description of corner evidence found:

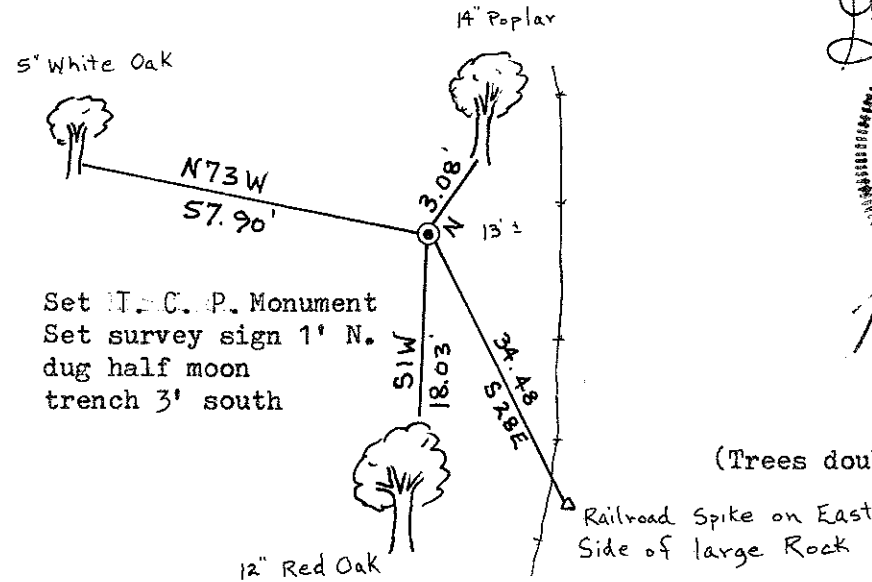
Set on line and at equal distances between the existing Harrison at the SW corner of Section 9 and the existing triangular stone (+), set by Holden in 1902, at the NW corner of Sec. 9.

Description of corner and witness monuments, references and accessories used to perpetuate the original or re-established location of this corner:

Witnesses to corner location:

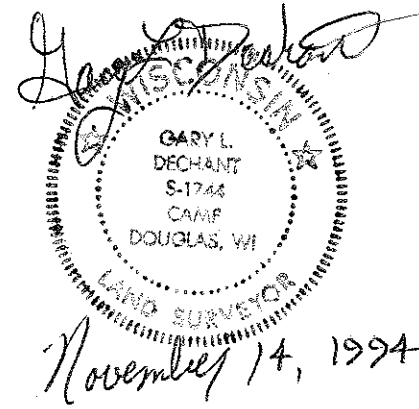
Malcom Scott Sowers

Gary L. Dechant

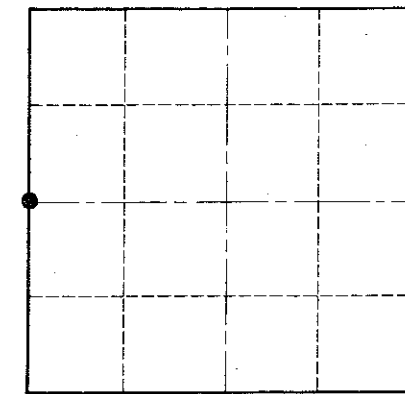


Set H.C.P. Monument
Set survey sign 1' N.
dug half moon
trench 3' south

(Trees double blazed with 20d nail set)



Section 9



• = LOCATION CORNER

T 16 N R 4 W

WISCONSIN

COUNTY SURVEYOR FORM NO. 1

SURVEY CONTROL ORDER

Horizontal _____
Vertical _____

WISCONSIN COORDINATE SYSTEM

Corner	East (X)	North (Y)	Elevation (Z)	Zone
Control Sta. Name				

City, Village or Town Leon

County of Monroe