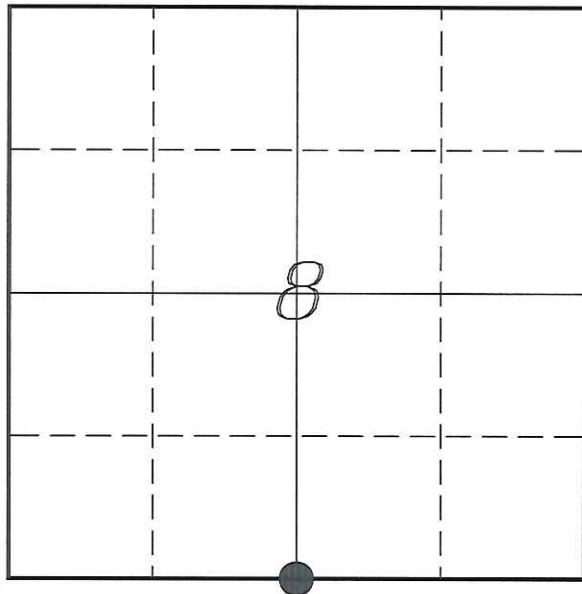


U. S. PUBLIC LAND SURVEY MONUMENT RECORD

SECTION 8, T16N, R4W, TOWN OF LEON
MONROE COUNTY, WISCONSIN



LOCATION OF LANDMARK

MONROE COUNTY COORDINATE SYSTEM	
Northing	352754.346
Easting	608006.655
Datum	NAD 1983 (1991)
Elevation	
Datum	
TYPE OF LANDMARK:	
Set Harrison Monument	
BEARINGS ARE REFERENCED TO:	
Monroe County Coordinates	

Witnesses: Laurence E Johns III

Date: 12 October 2013

Describe any record evidence, monument evidence, testimonial evidence or any other material evidence you considered and whether the monument was found or restored through acceptance of an obliterated evidence location.

No bearing trees of record were located.

I found a 3/4" iron rod in the same location as I previously measured in 2008. This location 0.42' South and 1.31 feet West of the mid-point between the SW & SE Corners of the section.

I find no current record of a survey that would monument this corner, but I do believe a survey exists along the North line of Section 17. There are fence posts along the North line of Section 17 from Kale Road extending West.

It is my belief that this 3/4" iron rod represents this corner as surveyed by a prior surveyor. Wilhite shows a Mag Nail at this corner. Computations show that this monument and the 3/4" iron rod are in the same place. At some time the Mag Nail was replaced with the 3/4" iron rod.

I accepted the 3/4" iron rod as the best available evidence of the original government corner and replaced it with a Harrison Monument.

Describe or show any material discrepancy between the location of the restored corner and that of the corner previously restored or re-established.

Henry Maddin established this corner in February 1847.

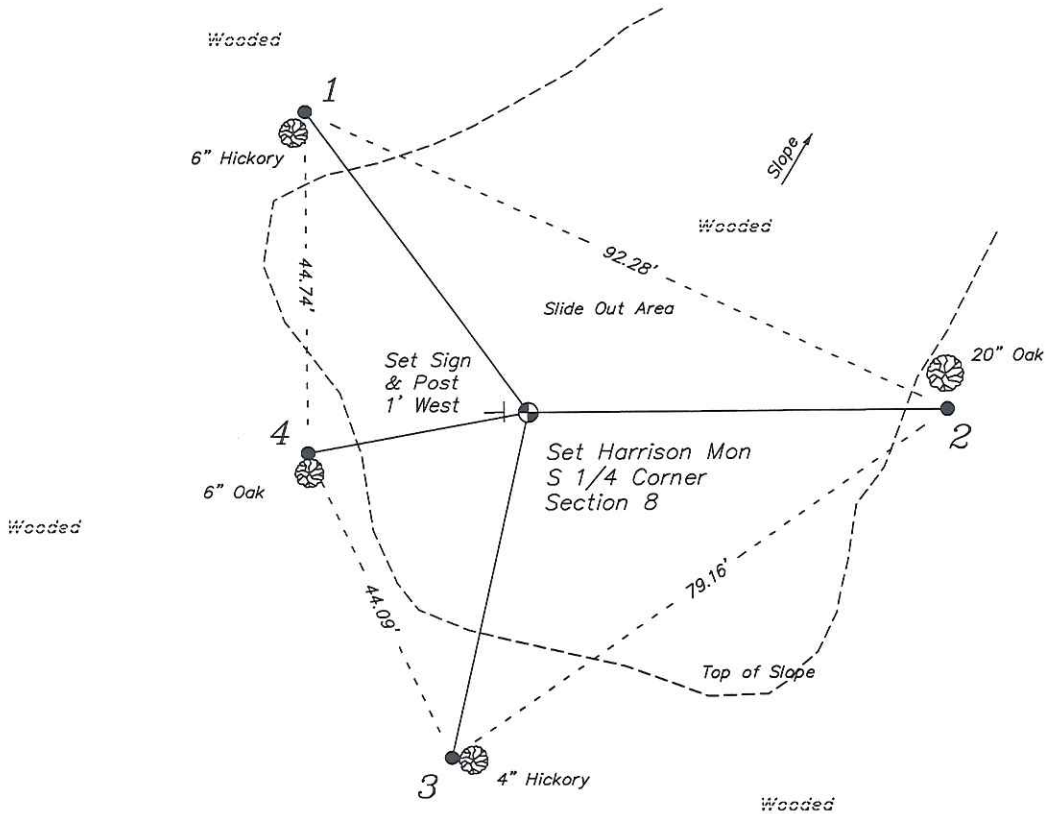
Fred Holden was at this corner, in December 1909, during a survey in Section 17. He shows that he found an original bearing tree and old stake.

Laurence Johns was at this corner, in August 2008. I was tasked to provide county coordinates for this corner. I found a 3/4" iron rod at this corner.

Dallas Wilhite was at this corner, in August 2013, during a survey in Section 17. He shows that there was an existing Mag Nail at this corner, per H A Sime survey.

RECORD OF DURABLE WITNESS MONUMENTS

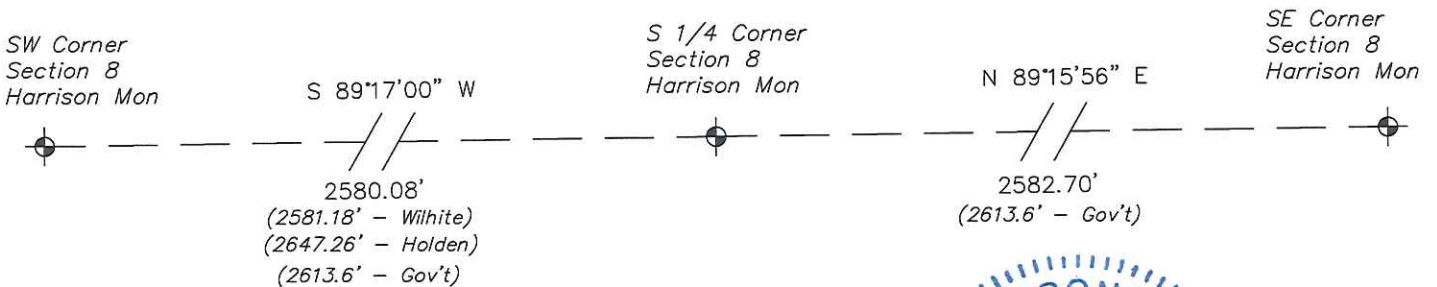
NO	DESCRIPTION	BEARING	DISTANCE
1	Set 3/4" x 18" Iron Rod North Side of a 6" Hickory	N 36°02'29" W	49.01'
2	Set 3/4" x 18" Iron Rod 1' South of a 20" White Oak	N 89°46'01" E	54.60'
3	Set 3/4" x 18" Iron Rod West Side of a 4" Hickory	S 12°48'07" W	46.31'
4	Set 3/4" x 18" Iron Rod North Side of a 6" White Oak	S 79°53'52" W	29.16'



NOT TO SCALE

PLAN VIEW DRAWING OF REFERENCE TIES

Map Showing Distance And Direction To Other Public Land Survey
Corners Used For Re-Establishing The Corner



I, Laurence E Johns III RLS 2804, Registered Land Surveyor, hereby certify that the corner location shown on this record was determined by me or under my direction and control, and that this U.S. Public Land Survey Monument Record is correct and complete to the best of my knowledge and belief.

Laurence E Johns III
 Laurence E Johns III RLS 2804
 Eagle Ridge Surveying, LLC
 PO Box 213
 Wilton, Wisconsin
 12 October 2013

