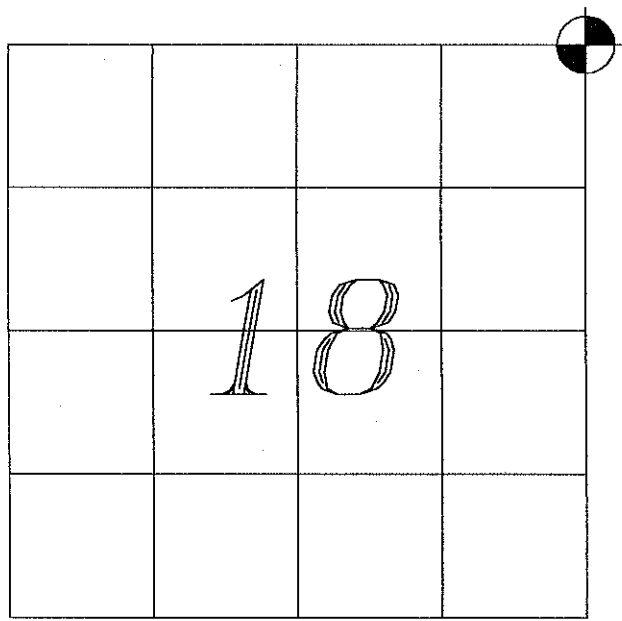


U. S. PUBLIC LAND SURVEY MONUMENT RECORD

SECTION 18 T 16 N, R 4 W, TOWN OF LEON
MONROE COUNTY



LOCATION OF LANDMARK

WISCONSIN COORDINATE SYSTEM
North
East
Theta Angle
Horiz. Order
Vert. Order
TYPE OF LANDMARK
HARRISON
BEARINGS ARE REFERENCED TO
The North line of Section 7 assumed S 88°33'31" E

CREW: MICHAEL J. HARDING
SCOTT DUNNUM

DATE: 4-21-99

Describe any record evidence, monument evidence, testimonial evidence, or any other material evidence you considered and whether the monument was found or restored through acceptance of an obliterated evidence location.

I set a Harrison monument equidistant from the East quarter corner of Section 7 and the East quarter corner of Section 18. I placed the Harrison in the fence line. The area had been recently logged therefor no bearing trees were found.

Describe or show any material discrepancy between the location of the restored corner and that of the corner previously restored or reestablished.

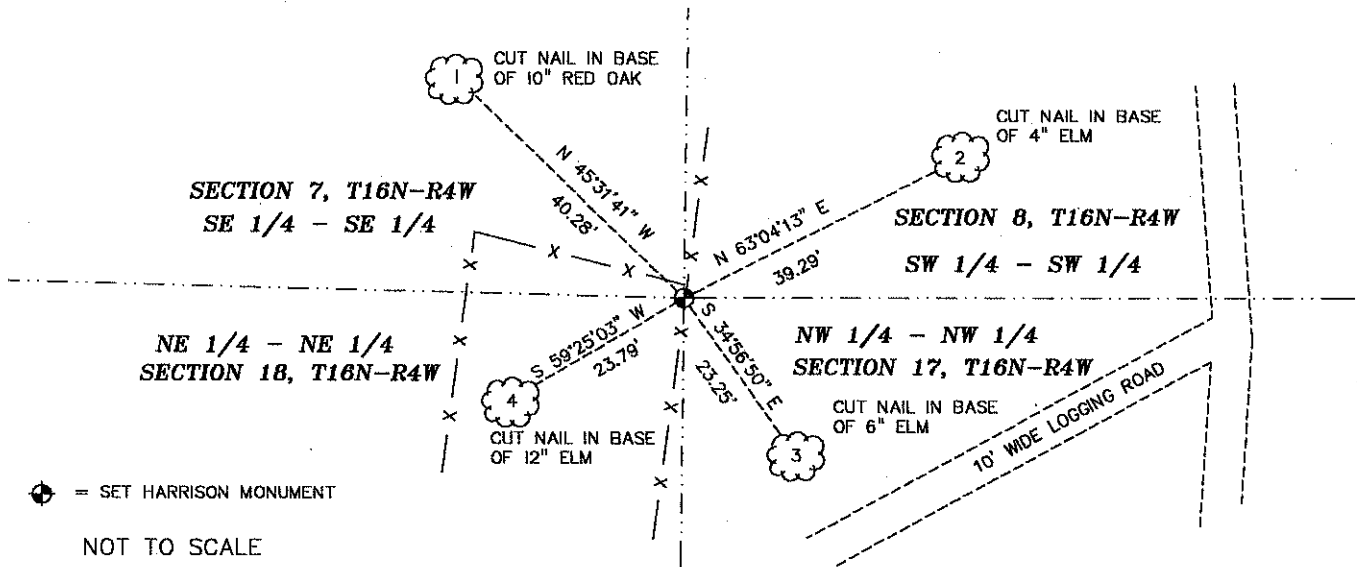
NONE.



Michael J. Harding
4-21-99

RECORD OF DURABLE WITNESS MONUMENTS

NO	DESCRIPTION	BEARING	DISTANCE
1	CUT NAIL IN BASE OF 10" RED OAK	N 45°31'41" W	40.28'
2	CUT NAIL IN BASE OF 4" ELM	N 63°04'13" E	39.29'
3	CUT NAIL IN BASE OF 6" ELM	S 34°56'50" E	23.25'
4	CUT NAIL IN BASE OF 12" ELM	S 59°25'03" W	23.79'

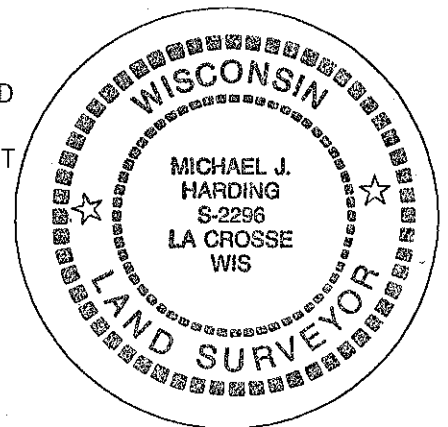


PLAN VIEW DRAWING OF REFERENCE TIES

MAP SHOWING DISTANCE AND DIRECTION TO OTHER PUBLIC LAND SURVEY CORNERS USED FOR REESTABLISHING THE CORNER

SEE MICHAEL J. HARDING'S PROJECT NO. S-3616

I, MICHAEL J. HARDING
 HEREBY CERTIFY THAT THE CORNER LOCATION SHOWN ON THIS RECORD
 WAS DETERMINED BY ME OR UNDER MY DIRECTION AND CONTROL AND
 THAT THIS U. S. PUBLIC LAND SURVEY MONUMENT RECORD IS CORRECT
 AND COMPLETE TO THE BEST OF MY KNOWLEDGE AND BELIEF.



Michael J. Harding 4-21-99
 Signature Date

Seal