

21604062000

I, RONALD D. PARISH, do hereby certify that on the 1ST day of JUNE 1984, I found (evidence) (no evidence) of the W 1/4 corner of SECTION 5, T 16 N, R 4 W Fourth Principal Meridian, and I re-established said corner according to the Wisconsin Statutes as shown and described hereon.

Dated this 9th day of JUNE 1984.

Ronald D. Parish
Registered Land Surveyor
Title

History of corner establishment since Original Government Survey

NO RECORDED HISTORY SINCE THE ORIGINAL SURVEY

Description of corner evidence found:

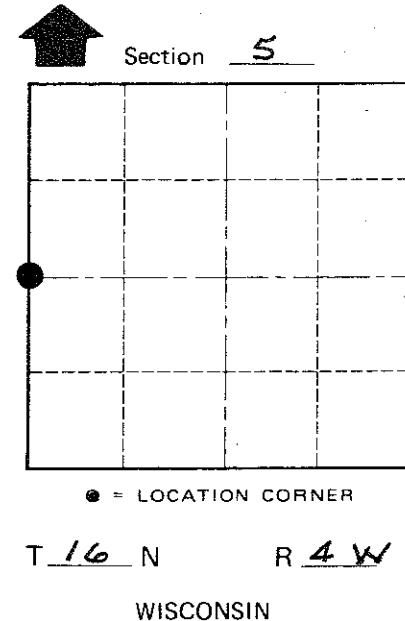
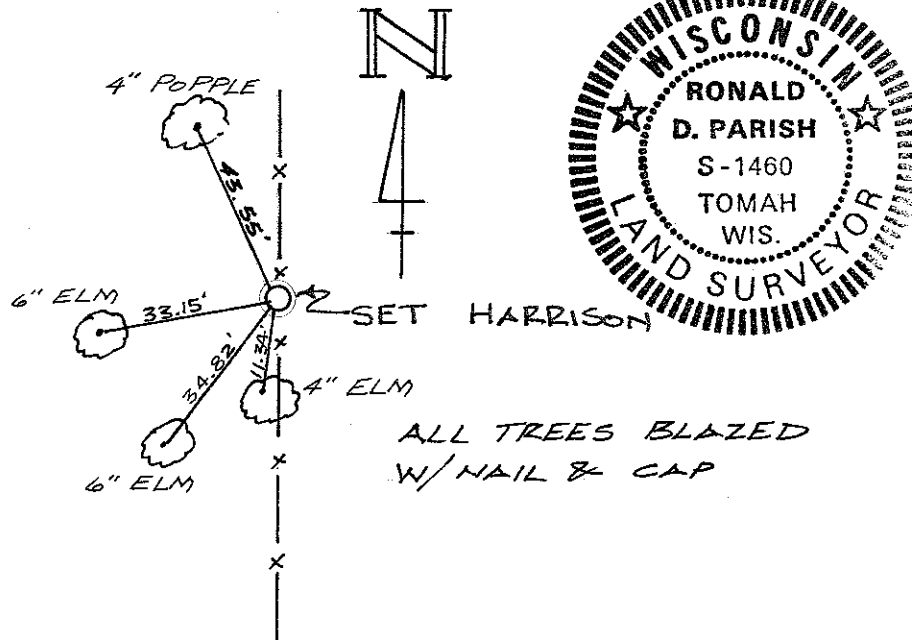
SET CORNER BY PROPORTIONATE MEASUREMENT NORTH & SOUTH AND TO FIT OCCUPATION. NO FENCE LINES OR ANY EVIDENCE EAST & WEST.

Description of corner and witness monuments, references and accessories used to perpetuate the original or re-established location of this corner:

Witnesses to corner location:

RONALD PARISH

CHARLES DADE



COUNTY SURVEYOR FORM NO. 1

SURVEY CONTROL ORDER

Horizontal	_____
Vertical	_____

WISCONSIN COORDINATE SYSTEM

Corner	East (X)	North (Y)	Elevation (Z)	Zone
Control Sta. Name				

City, Village or Town LEON

County of MONROE