

CERTIFIED LAND CORNER

I, LAWRENCE A. FEDDERSEN, do hereby certify that on the 12th day of August, 1999, I found no evidence of the West 1/4 Corner of Section 4, T16N-R4W, Fourth Principle Meridian, and I re-established said corner according to the Wisconsin Statutes as shown and described hereon.

Dated this 12th day of August, 1999.

Lawrence A. Feddersen

REGISTERED LAND SURVEYOR
TITLE

History of corner establishment since Original Government Survey

Fred Holden was at this corner 10 - 11 April, 1902, and found the original corner.

Description of corner evidence found:

Reset corner by doubling the distance from Holden's CW 1/16 Corner to the computed Center Section.



Description of corner and witness monuments, references and accessories used to perpetuate the original or re-established location of this corner:

⊕ = SET TRUE CAST PRODUCT (TCP) MONUMENT FLUSH WITH GROUND.

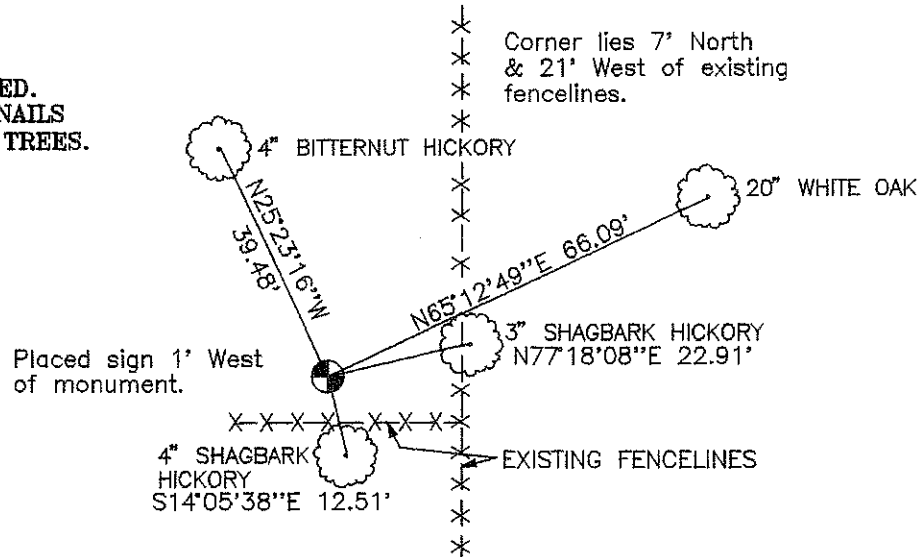
Witnesses to corner location:

LAWRENCE A. FEDDERSEN

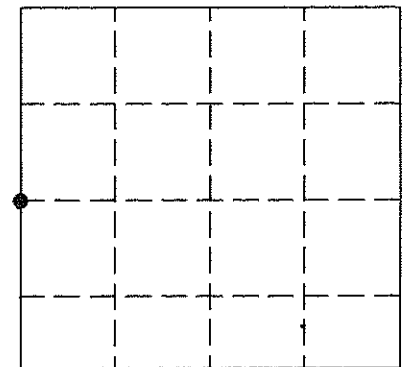
DWAYNE M. HEFNER

LARRY HANDSCHY

**ALL TREES ARE DOUBLE BLAZED.
ALL MEASUREMENTS TO THE NAILS
& WASHERS SET IN BASE OF TREES.**



Section 4, T16N, R4W



⊕ = LOCATION OF CORNER

TOWN OF LEON,
MONROE COUNTY, WI

SURVEY CONTROL ORDER

HORIZONTAL				
VERTICAL				
CORNER	EAST (X)	NORTH (Y)	ELEVATION (Z)	ZONE
CONTROL STA. NAME				