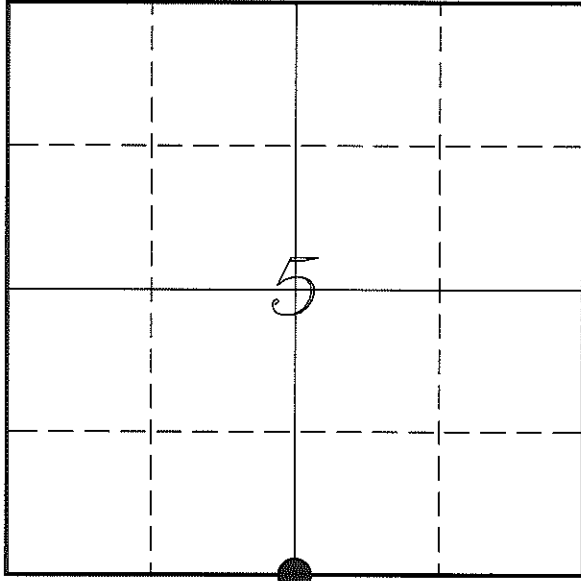


U. S. PUBLIC LAND SURVEY MONUMENT RECORD

SECTION 5, T16N, R4W, TOWN OF LEON
MONROE COUNTY, WISCONSIN



LOCATION OF LANDMARK

Witnesses: Laurence E Johns III
Larry Handschy

Date: 31 May 2013

MONROE COUNTY COORDINATE SYSTEM	
Northing	358011.144
Easting	608111.187
Datum	NAD 1983 (1991)
Elevation	
Datum	
TYPE OF LANDMARK:	
Set Harrison Monument	
BEARINGS ARE REFERENCED TO:	
Monroe County Coordinates	

Describe any record evidence, monument evidence, testimonial evidence or any other material evidence you considered and whether the monument was found or restored through acceptance of an obliterated evidence location.

No bearing trees of record were located.

I found a 3/4" iron rod at the location computed by the information provided to me from Schmitz.

This location appears to be set at the mid-point between the SW & SE Corners of Section 5.

I also found a unrecorded railroad spike at a fence corner about 45 feet to the Southwest of this monument.

I spoke to Schmitz about this corner and he stated that he felt that there were too many irregular fences to accept the fence corner. He stated that he felt more comfortable with the mid-point location than the fence corner.

After my conversation with Schmitz, and also with this corner being used for at least two separate surveys, I accepted the location of the 3/4" iron rod as the best location for this corner and replaced it with a Harrison Monument.

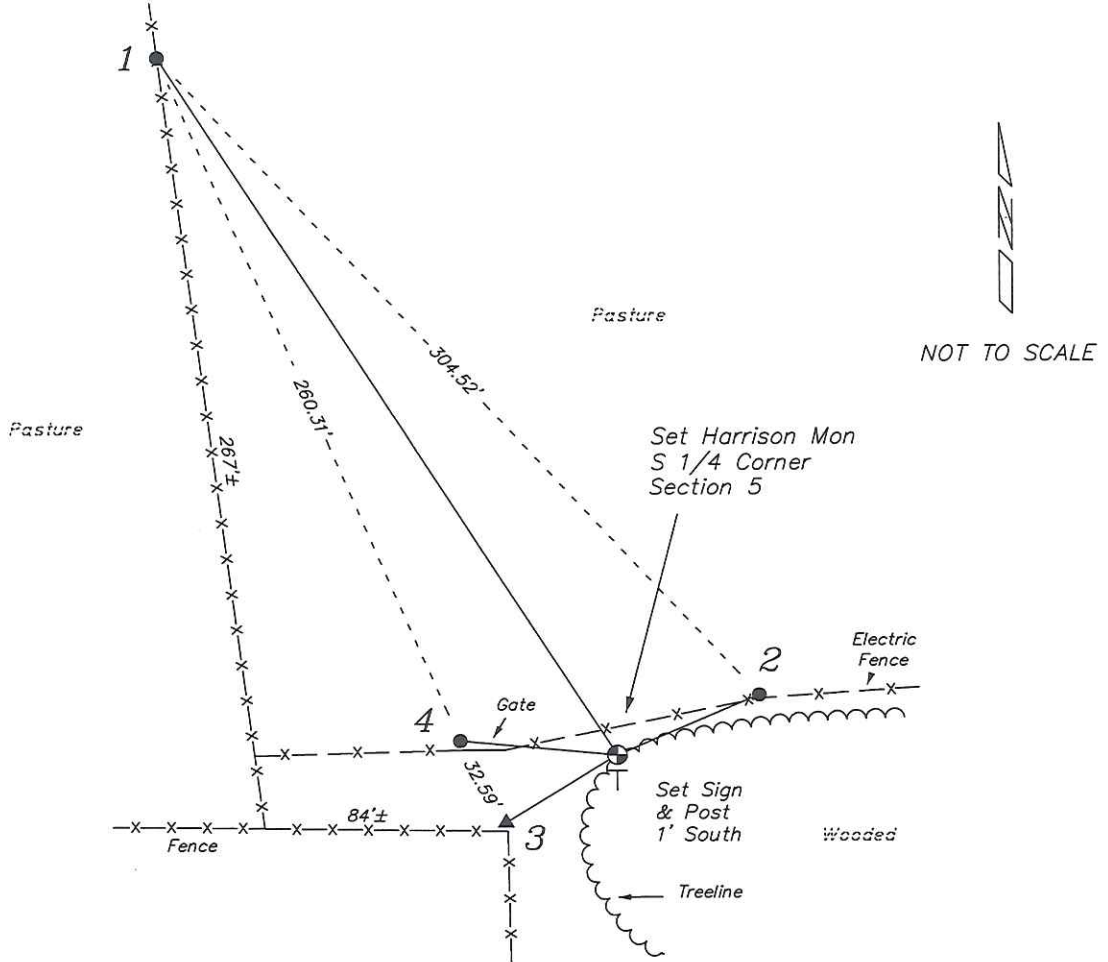
Describe or show any material discrepancy between the location of the restored corner and that of the corner previously restored or re-established.

Henry Maddin established this corner in February 1847.

Jonathan Schmitz was at this corner, in August 2008, during a unrecorded survey in Section 8. He surveyed the NW1/4 of the NW1/4 and a part of the SW1/4 of the NW1/4 of that section.

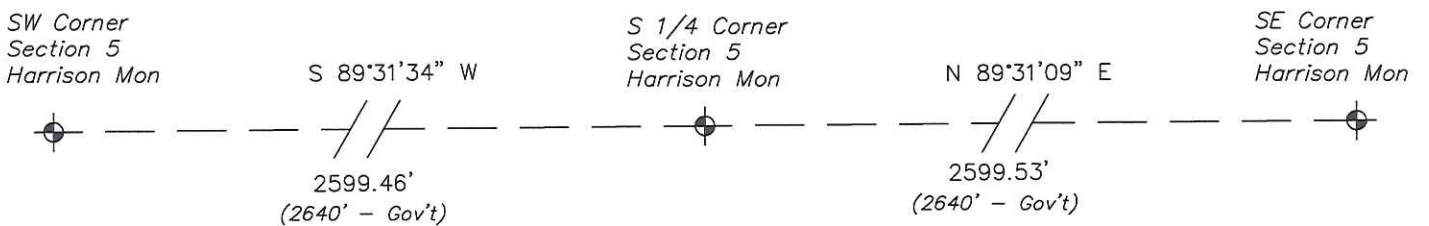
RECORD OF DURABLE WITNESS MONUMENTS

NO	DESCRIPTION	BEARING	DISTANCE
1	Set 3/4" x 18" Iron Rod In Pasture Fence	N 33°05'36" W	290.65'
2	Set 3/4" x 18" Iron Rod In Pasture Fence	N 66°48'51" E	53.71'
3	Existing Railroad Spike At Fence Corner	S 58°40'43" W	45.27'
4	Set 3/4" x 18" Iron Rod At Gate Post - West End of Gate	N 84°47'43" W	54.71'



PLAN VIEW DRAWING OF REFERENCE TIES

Map Showing Distance And Direction To Other Public Land Survey Corners Used For Re-Establishing The Corner



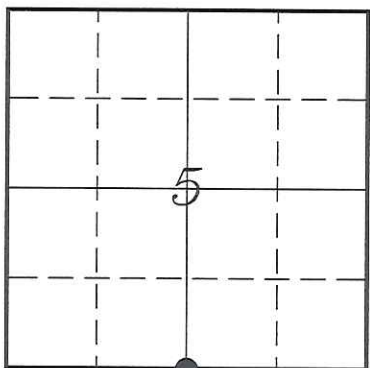
I, Laurence E Johns III RLS 2804, Registered Land Surveyor, hereby certify that the corner location shown on this record was determined by me or under my direction and control, and that this U.S. Public Land Survey Monument Record is correct and complete to the best of my knowledge and belief.

Laurence E. Johns III
 Laurence E Johns III, RLS 2804
 Eagle Ridge Surveying, LLC
 PO Box 213
 Wilton, Wisconsin
 2 June 2013



U. S. PUBLIC LAND SURVEY MONUMENT RECORD
'Addendum for Corner Photographs'

SECTION 5, T16N, R4W, TOWN OF LEON
MONROE COUNTY, WISCONSIN



LOCATION OF LANDMARK

Date:
31 May 2013



Taken from the North, In the Field



Taken from the West, at the East Edge of the Gate