

CERTIFICATE

I, Bryan H. Meyer, do hereby certify that on the 13th day of October, 1999, I found evidence of the Southwest corner of Section 4, T 16 N, R 4 W Fourth principle Meridian, and I re-established said corner according to the Wisconsin Statutes as shown and described hereon.

Dated this 14th day of October, 1999

Bryan H. Meyer
 Registered Land Surveyor
 Title

Description of corner and witness monuments, references and accessories used to perpetuate the original or re-established location of this corner.

Witnesses to corner location:

Bryan H. Meyer
Rick Reisinger

SURVEY CONTROL ORDER

Horizontal
Vertical

MONROE COUNTY COORDINATE SYSTEM

Corner	Northing	Easting	Elevation
Control Station Name			

CERTIFIED LAND CORNER

21604050000

No. 29

History of corner establishment since Original Government Survey

Monroe County Surveyor Fred Holden was here in April of 1902 and set a stone with a cross.

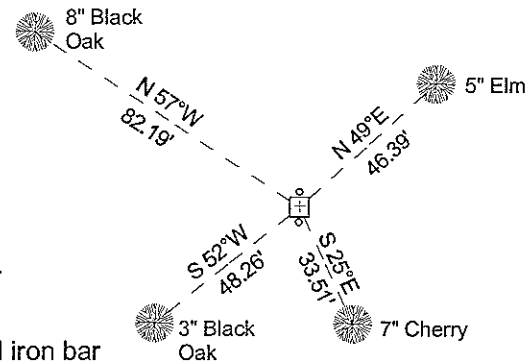
Description of corner evidence found:

Found Holden's stone and accepted it as the corner.



Bryan H. Meyer
 H. A. Sime and Associates
 P. O. Box 50
 Tomah, Wisconsin 54660
 Phone: 608-372-5392

Section 4

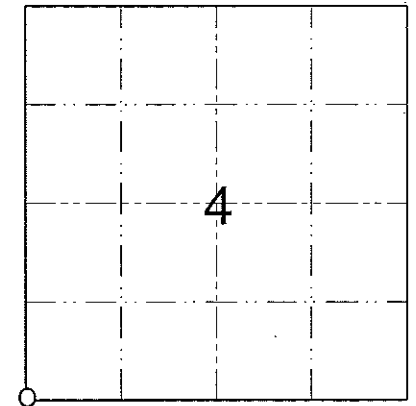
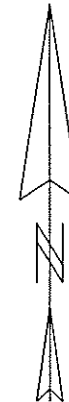


Set sign & post
 8" East of stone.

o = Set 3/4" x 24" round iron bar
 on N and S sides of stone.

The four trees shown are double blazed; the distance shown to each is to a nail set in a hack in the side of each tree.

Crew: Meyer, R Reisinger
 Date: October 13, 1999
 Weather: Cloudy, Windy, 50°±



O = Corner Location
T 16 N R 4 W
 WISCONSIN

Town of LEON
 County of MONROE