

21604042000

I, Gary L. Dechant, do hereby certify that on the 20th day of July 19 90, I found ~~(evidence)~~ (no evidence) of the W/4 corner of Section 3, T 16 N, R 4 W Fourth Principal Meridian, and I re-established said corner according to the Wisconsin Statutes as shown and described hereon.

Dated this 1st day of August 19 90.

Gary L. Dechant

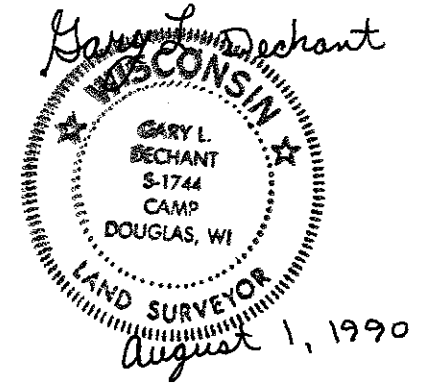
Registered Land Surveyor, S-1744
Title

History of corner establishment since Original Government Survey

No known history since the original government survey.

Description of corner evidence found:

Set by single proportionate measurement.



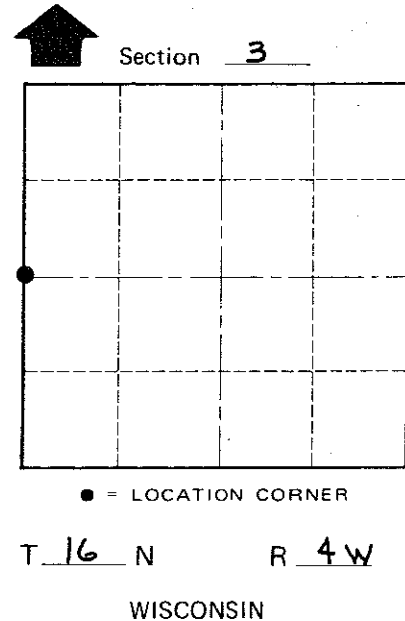
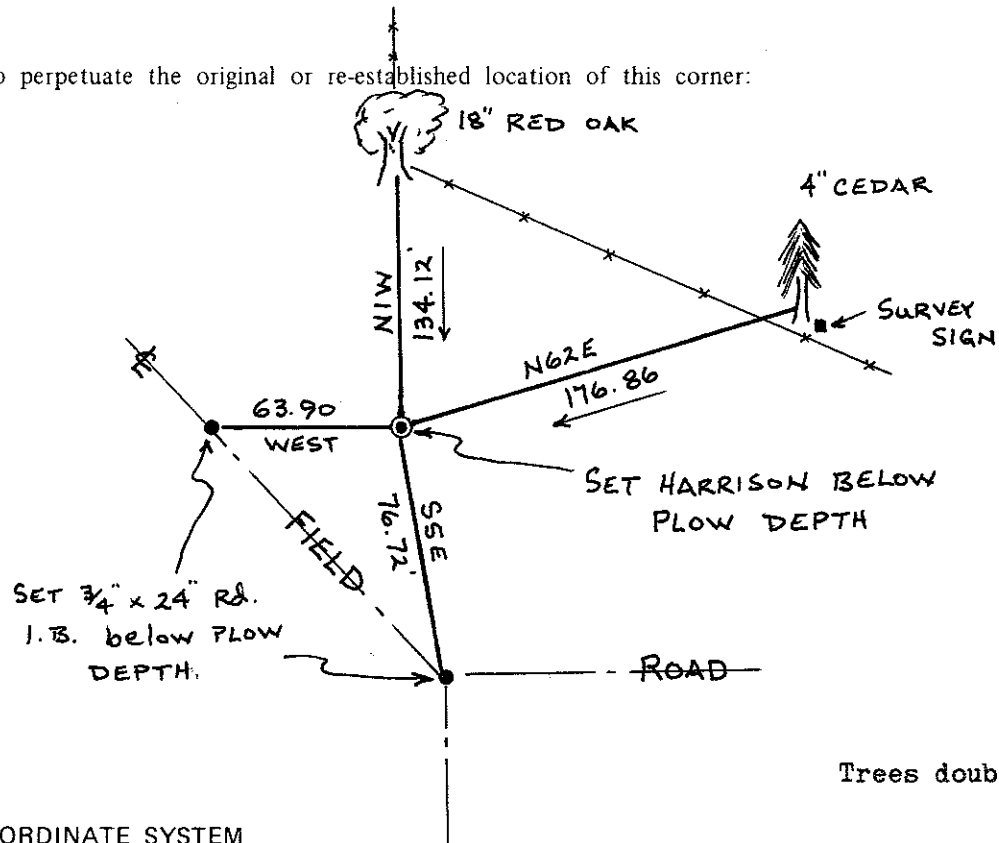
Description of corner and witness monuments, references and accessories used to perpetuate the original or re-established location of this corner:

Set Harrison Monument in field, set below plow depth.

Witnesses to corner location:

David E. Madison

Gary L. Dechant



Trees double blazed with nails set.

COUNTY SURVEYOR FORM NO. 1

SURVEY CONTROL ORDER

Horizontal _____
Vertical _____

WISCONSIN COORDINATE SYSTEM

Corner	East (X)	North (Y)	Elevation (Z)	Zone
Control Sta. Name				

~~City/Village~~ Town LEON
County of MONROE